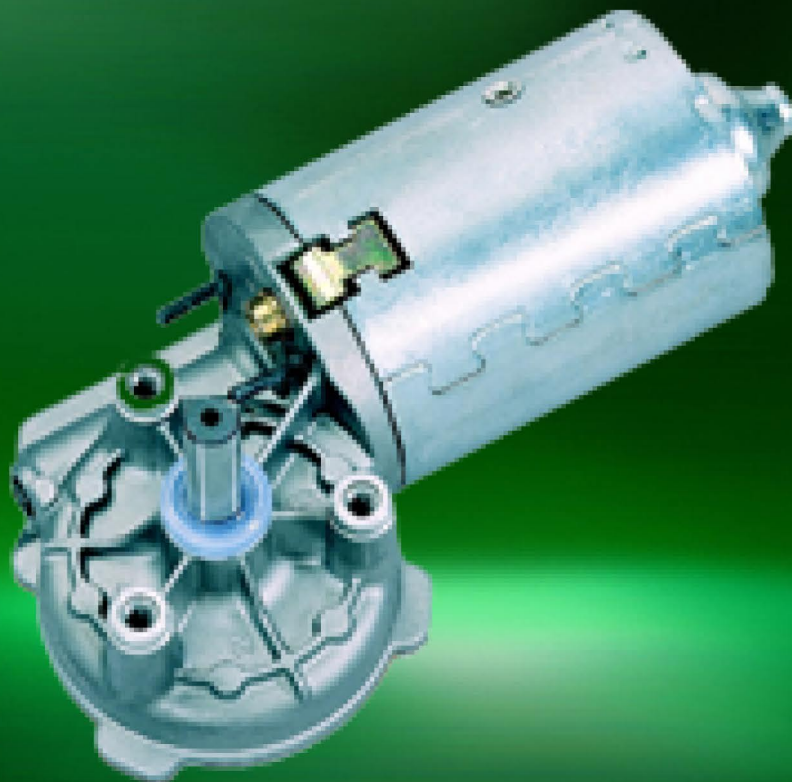


- Information
- GMK · GML
- GMP
- GMAG
- GMP1
- GMPS
- GMPD
- GMPG
- SWMP
- DCK31
- DCK35
- SW2L
- SWNV
- SWMG
- SWMK**

SWMK

As 12-volt and 24-volt motor with Interference suppression and hall sensors



Technical description

Motor housing	Sheet steel deep drawn & protected against corrosion
Magnetic field	Permanent magnet
Type of transmission	Worm gear transmission
Transmission housing	Zinc die casting
Gearwheel material	Plastic, metal
Transmission lubrication	Grease, permanent lubrication
Mechanical interface	Drive shaft
Electrical interface	Plug
Sensor	Optional
Thermal protection	Optional
Interference suppression	Optional

Applications

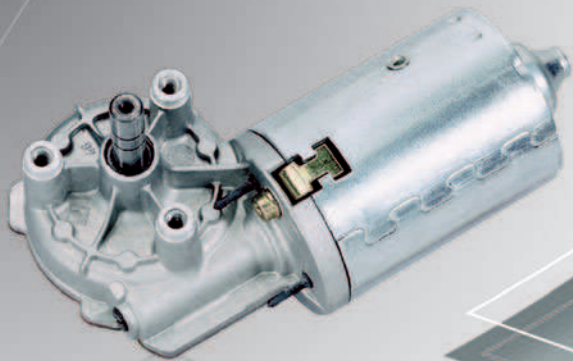
- Industry**
- Garage door and door opener, pumps, lubricating technology, household devices, linear drives
- Automobile**
- Tailgate adjustment



NIDEC MOTORS & ACTUATORS ❖❖❖ MOTOR SERIES

0270 (SWMK)

❖❖❖ DC MOTORS WITH WORM GEAR

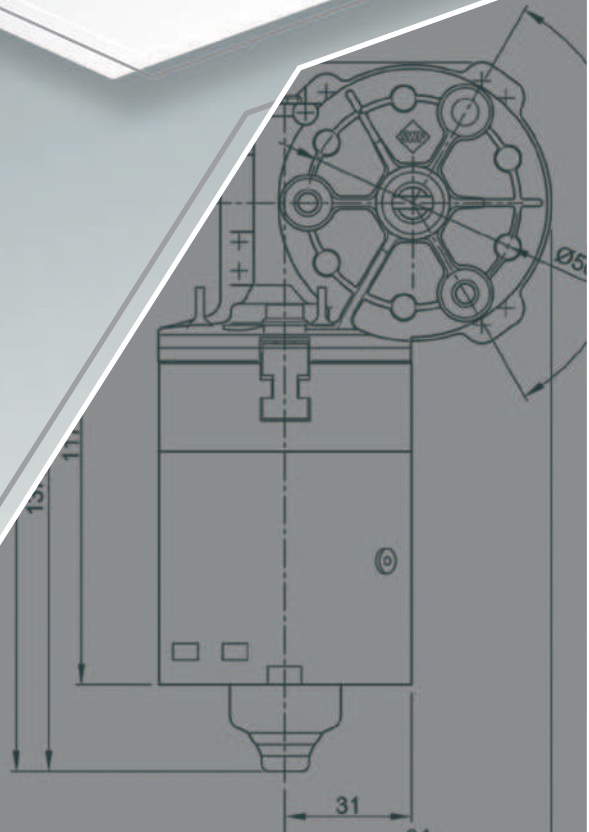


❖❖❖ TECHNICAL DESCRIPTION

Motorhousing:	rolled, corrosion protected
Excitation field:	permanent magnet
Type of gear mesh:	worm gear
Gear housing:	aluminium die cast
Gear wheel material:	plastic
Lubrication:	grease
Mechanical interface:	steel shaft
Electric interface:	connector or tinned leads
Sensor:	optional
Thermal protection:	optional
EMC suppression:	optional

❖❖❖ APPLICATION

Industry, Linear drives, General machinery,
 Vending machines, Agricultural technology,
 Office machines, Laboratory devices,
 Medical technology, Traffic & communications
 technology, Film/optics



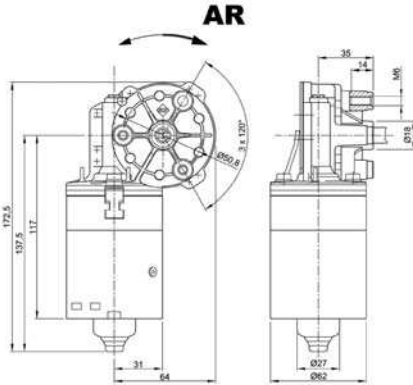
Design Data	
Commutation	Brushed
Direction of rotation	Bi-directional
Bearing type	

Performance data		
Rated voltage [V]	U_N	24
Nominal torque [Nm]	M_N	4.00
No-load speed [min^{-1}]	n_0	50.0
Nominal power [W]	P_N	17.7
Nominal current [A]	I_N	2.5
Nominal force [kN]	F_N	0.00
Duty cycle		s1

Sensor data	
Pulses	0
Output channels	0

Other data	
Gear ratio	55/1
Gear wheel material	Plastic
Suppression components	
Enclosure class	IP30
Weight [kg]	1.200

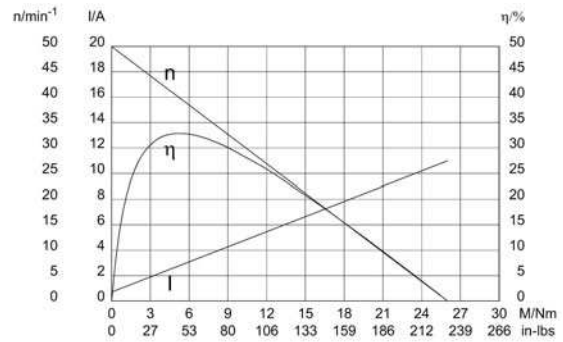
Remarks:



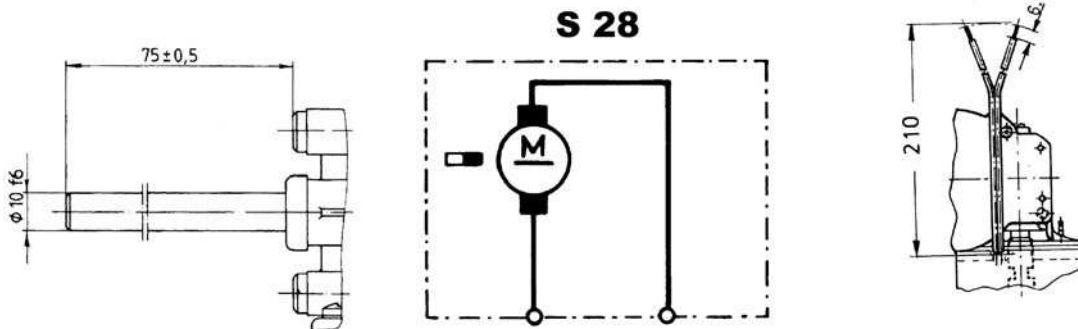
Motor picture



Characteristic curves



Output shaft drawing (W), Wiring diagrams (S) and Connector layout (K)



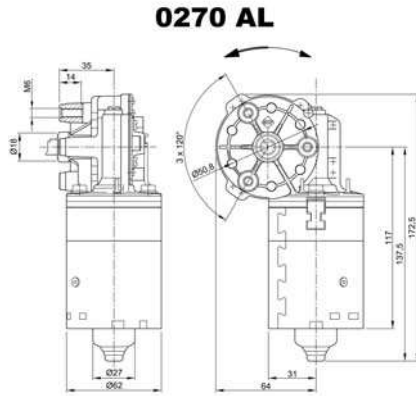
Design Data	
Commutation	Brushed
Direction of rotation	Bi-directional
Bearing type	

Performance data		
Rated voltage [V]	U_N	24
Nominal torque [Nm]	M_N	3.50
No-load speed [min^{-1}]	n_0	50.0
Nominal power [W]	P_N	15.9
Nominal current [A]	I_N	2.0
Nominal force [kN]	F_N	0.00
Duty cycle		s1

Sensor data	
Pulses	0
Output channels	0

Other data	
Gear ratio	55/1
Gear wheel material	Plastic
Suppression components	4.7 μ H, 1nF
Enclosure class	IP30
Weight [kg]	1.200

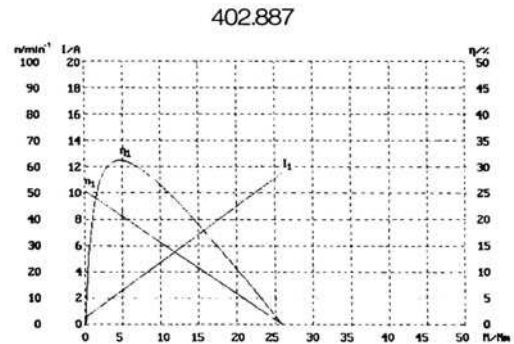
Remarks:



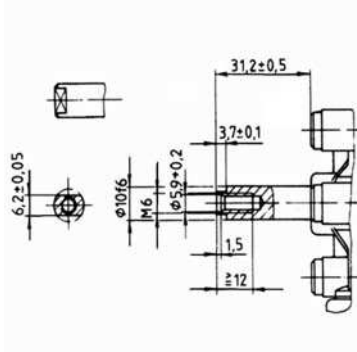
Motor picture



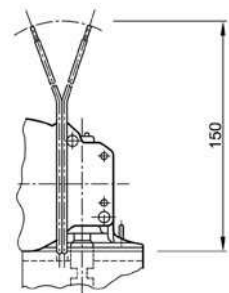
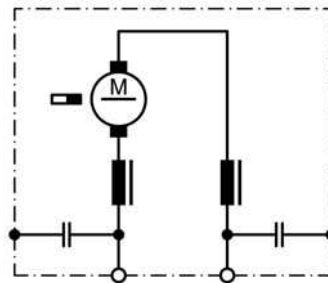
Characteristic curves



Output shaft drawing (W), Wiring diagrams (S) and Connector layout (K)



S 30



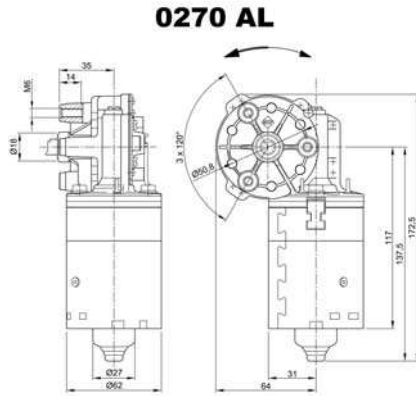
Design Data	
Commutation	Brushed
Direction of rotation	Bi-directional
Bearing type	

Performance data		
Rated voltage [V]	U_N	24
Nominal torque [Nm]	M_N	1.00
No-load speed [min^{-1}]	n_0	280.0
Nominal power [W]	P_N	24.9
Nominal current [A]	I_N	4.0
Nominal force [kN]	F_N	0.00
Duty cycle		s1

Sensor data	
Pulses	0
Output channels	0

Other data	
Gear ratio	41/4
Gear wheel material	Plastic
Suppression components	
Enclosure class	IP30
Weight [kg]	1.200

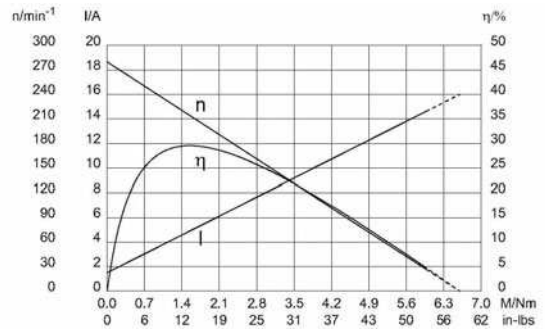
Remarks:



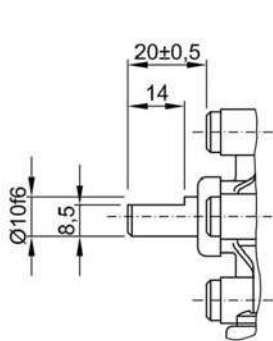
Motor picture



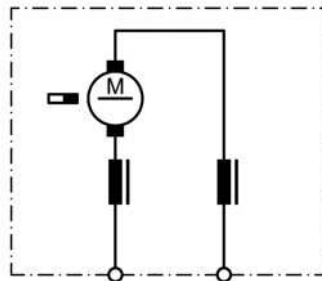
Characteristic curves



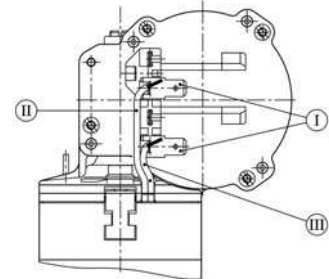
Output shaft drawing (W), Wiring diagrams (S) and Connector layout (K)



S 27



K 42



- I Blade terminal ends
6,3 x 0,8 DIN 46 244
- II green
- III red

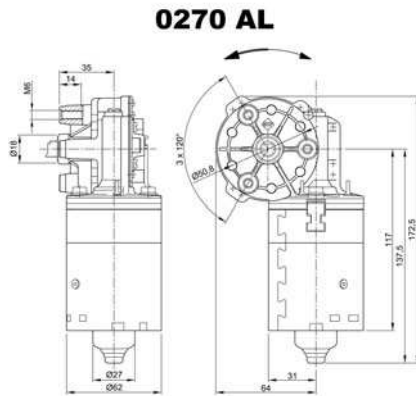
Design Data	
Commutation	Brushed
Direction of rotation	Bi-directional
Bearing type	

Performance data		
Rated voltage [V]	U_N	24
Nominal torque [Nm]	M_N	1.00
No-load speed [min^{-1}]	n_0	264.0
Nominal power [W]	P_N	23.2
Nominal current [A]	I_N	4.0
Nominal force [kN]	F_N	0.00
Duty cycle		s1

Sensor data	
Pulses	10.25
Output channels	1

Other data	
Gear ratio	41/4
Gear wheel material	Plastic
Suppression components	
Enclosure class	IP30
Weight [kg]	1.200

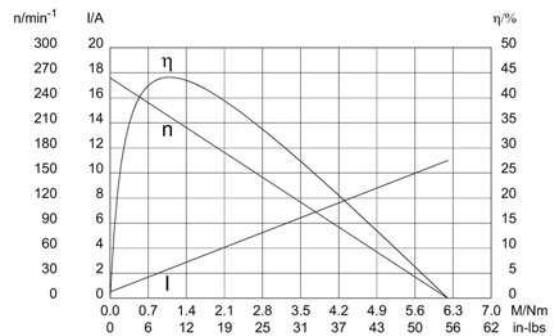
Remarks:



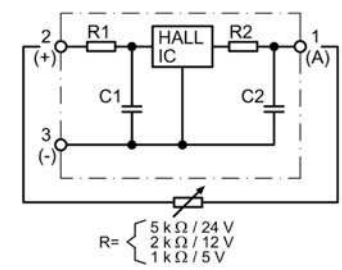
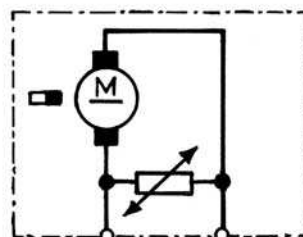
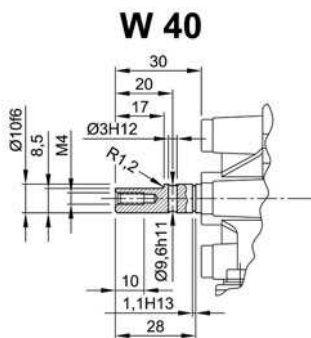
Motor picture



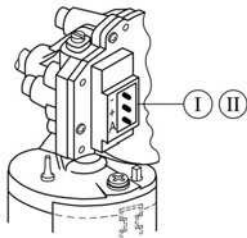
Characteristic curves



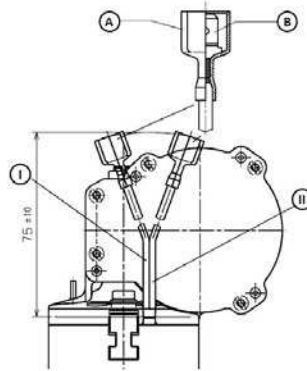
Output shaft drawing (W), Wiring diagrams (S) and Connector layout (K)



Output shaft drawing (W), Wiring diagrams (S) and Connector layout (K)



I Panduit MLSS 100-03
 II Gegenstecker: Panduit CE 100 F22-03



A: housing MST AMP No. 2-521055-2
 B: spade terminals 6.3 x 0.8 DIN 46 244
 I: red
 II: green

Notes

NIDEC MOTORS & ACTUATORS WORLDWIDE DISTRIBUTORS



Innovatech Solutions Pty Ltd.
19 Northwind Avenue
2250 Point Clare, NSW
Australia

Tel. +61 2 43 22 39 62
Fax +61 2 43 22 39 62
rkutter@innovatechsolutions.com.au
www.innovatechsolutions.com.au



Kwapil Co. GmbH
Kammelweg 9
1210 Wien
Austria

Tel. +43 12 78 85 85
Fax +43 12 78 85 86
verkauf@kwapil.com
www.kwapil.com



Eisses Import B.V.
Admiraal Trompstraat 11
3115 HK Schiedam
Holland

Tel. +31 1 02 46 00 18
Fax +31 1 02 46 00 19
info@eissesbv.nl
www.eissesbv.nl



Drive Systems Group
7150 Torbram Road, No 1 & 2
L4T 3Z8 Mississauga, ON
Canada

Tel. +1 90 54 05 03 10
Fax +1 90 54 05 03 13
georger@drivesystemsgroup.com
www.drivesystemsgroup.com



Opis Engineering k.s.
Selská 64
61400 Brno-Malomerice
Czech Republic

Tel. +42 05 43 33 00 55
Fax +42 05 43 24 26 53
cada@opis.cz
www.opis.cz



Bondy - LMT A&S
Grundtvigsalle 168
6400 Sonderborg
Denmark

Tel. +45 74 43 18 80
Fax +45 74 43 18 81
ej@lmttransmission.dk
www.lmttransmission.dk



Oy Movetec AB
Hannuksentie 1
02270 Espoo
Finland

Tel. +35 89 52 59 23 0
Fax +35 89 52 59 23 33
pasi.nyberg@movetec.fi
www.movetec.fi



Comotech Industries
6 rue des Blonnières
BP 82441 Haute Goulaine
44124 - VERTOU, France

Tel. +33 2 40 05 05 05
Fax +33 2 40 05 05 03
thierry.berthou@comotech.fr
www.comotech.fr



101 automation GmbH
Schallbruch 19-21
42781 Haan
Germany

Tel. +49 21 29 37 63 50
Fax +49 21 29 37 63 59
info@101automation.de
www.101automation.de



JBW GmbH
Bodenseestrasse 228
81243 München
Germany

Tel. +49 89 89 70 10 33
Fax +49 89 89 70 10 00
info@elektromotore.eu
www.elektromotore.eu



Ott GmbH & Co. KG
Baarstrasse 3
78652 Deislingen
Germany

Tel. +49 74 20 93 99 0
Fax +49 74 20 93 99 25
info@ott-antriebe.de
www.ott-antriebe.de



Wald Antriebe GmbH
Hanns-Hoerbiger-Strasse 1
29664 Walsrode
Germany

Tel. +49 51 61 60 37 07
Fax +49 51 61 60 37 08
info@waldantriebe.de
www.waldantriebe.de



Electro Mechanical Systems Ltd
Eros House, Calleva Park, Aldermaston
Reading RG7 8LN
Great Britain

Tel. +44 11 89 81 73 91
Fax +44 11 89 81 76 13
pboughey@ems-ltd.com
www.ems-limited.co.uk



Eisses Import B.V.
Admiraal Trompstraat 11
3115 HK Schiedam
Holland

Tel. +31 1 02 46 00 18
Fax +31 1 02 46 00 19
info@eissesbv.nl
www.eissesbv.nl



Strategi Automation Solutions Pvt Ltd
Plot 25/B, Dodannakundi Indl Estate,
560048 Bangalore
India

Tel. +91 80 41 16 31 36/7
Fax +91 80 41 16 30 47
arun@strategiautomation.com
www.strategiautomation.com



Mechatronics Ltd.
P.O. Box 3818
49130 Petach-Tikva
Israel

Tel. +97 2 39 28 88 88
Fax +97 2 39 28 88 80
office@mechatronics.co.il
www.mechatronics.co.il



Motech s.r.l.
Via delle Nazioni, 87
41100 Modena
Italy

Tel. +39 59 45 42 96
Fax +39 59 45 16 93
m.coda@motech-italia.com
www.motech-italia.com



Nidec-Shimpo Corp
1 Terada Kohtari, Nagaokakyo City
617-0833 Kyoto
Japan

Tel. +81 7 59 58 38 86
Fax +81 7 59 58 36 48
shinichi.takahashi@nidec-shimpo.co.jp
www.nidec-shimpo.co.jp



Eisses Import B.V.
Admiraal Trompstraat 11
3115 HK Schiedam
Holland

Tel. +31 1 02 46 00 18
Fax +31 1 02 46 00 19
info@eissesbv.nl
www.eissesbv.nl



Aratron AS
Bjornerudveien 17
1266 Oslo
Norway

Tel. +47 23 19 16 60
Fax +47 23 19 16 61
christer@aratron.no
www.aratron.no



Opis Engineering, s.r.o
Lucna 476
03202 Zavazna Poruba
Slovakia

Tel. +42 14 45 54 72 34
Fax +42 14 45 54 72 34
opis@opis.sk
www.opis.sk



Motech Iberica
Avda. de Las Cortes Valencianas, 41, 1º G
46015 Valencia
Spain

Tel. +34 9 63 45 54 05
Fax +34 9 63 46 59 31
jnavarro@motech.es
www.motech.es



KG Knutsson AB
Hammarbacken 8
19181 Sollentuna
Sweden

Tel. +46 8 92 30 20
Fax +46 8 92 33 66
dan.kimblad@kgk.se
www.kgk.se



Antrimon AG
Luzernerstrasse 91
5630 Muri (AG)
Switzerland

Tel. +41 5 66 75 40 30
Fax +41 5 66 75 40 31
info@antrimon.ch
www.antrimon.ch



S-MIKRON LTD. ŞTİ.
Nilüfer Ticaret Merkezi 66. Sokak No:8
16110 Nilüfer-BURSA
Turkey

Tel. +90 22 44 43 52 33 (Pbx)
Fax +90 22 44 43 52 42
info@s-mikron.com.tr
www.s-mikron.com.tr



Burns Controls Comp.
13735 Beta Road
Dallas TX 75244
USA

Tel. +1 97 22 33 67 12
Fax +1 97 22 33 80 39
burns@burnscontrols.com
www.burnscontrols.com



Power Electric
15300 25th Ave North, Suite 400
Plymouth MN 55447
USA

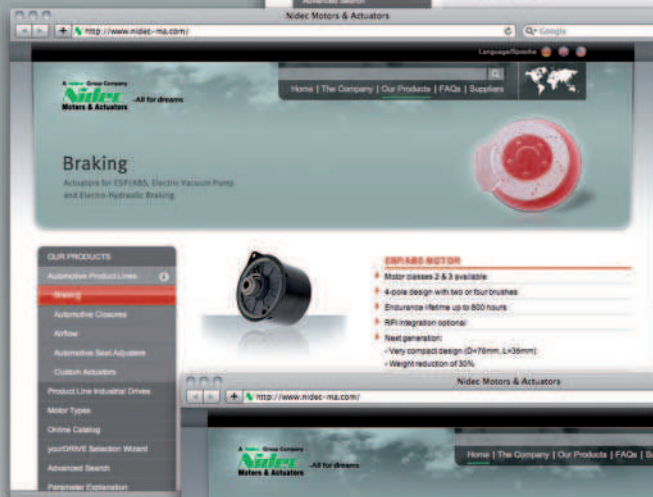
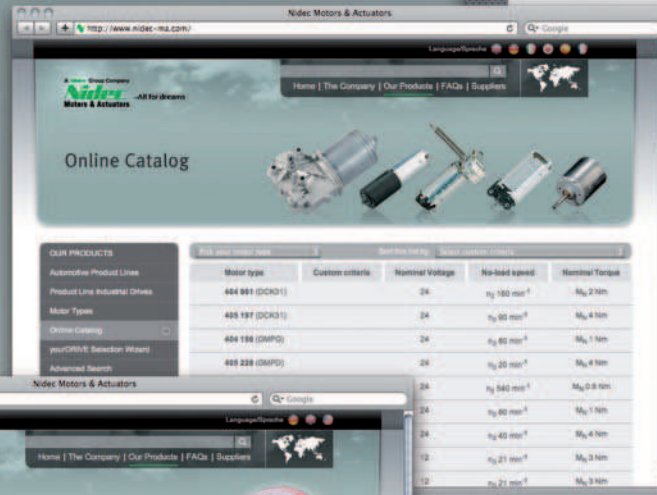
Tel. +1 76 35 53 10 90
Fax +1 76 35 53 12 42
nbohn@powerelectric.com
www.powerelectric.com

For current information, product downloads and up-to-date news and in-depth drive selection assistance, log on to our new website! Find your perfect drive with just one click: www.nidec-ma.com



- Comfortable seating thanks to the many adjuster motors in the seats.
- Motors in the sliding roof to let the sun in, and to move the roller sun blind, to keep it out.
- Electrically adjustable steering columns for optimum ergonomics.
- Adjustable spoiler for improved driving safety at higher speeds.
- Automatically controlled opening and closing of sliding doors, trunk lids or tailgates.
- Active Safety for driving and braking owing to motors in the ABS/ESP system.

NIDEC Motors & Actuators for comfort and safety in the automobile. We get things moving.



11.2010 © Copyright by NIDEC MOTORS & ACTUATORS

NIDEC MOTORS & ACTUATORS (GERMANY) GmbH

Seewiesenstrasse 9
74321 Bietigheim-Bissingen, Germany

Tel.: +49 (0) 71 42 / 508-0

Fax: +49 (0) 71 42 / 508-20 10

sales@nidec-ma.com

www.nidec-ma.com