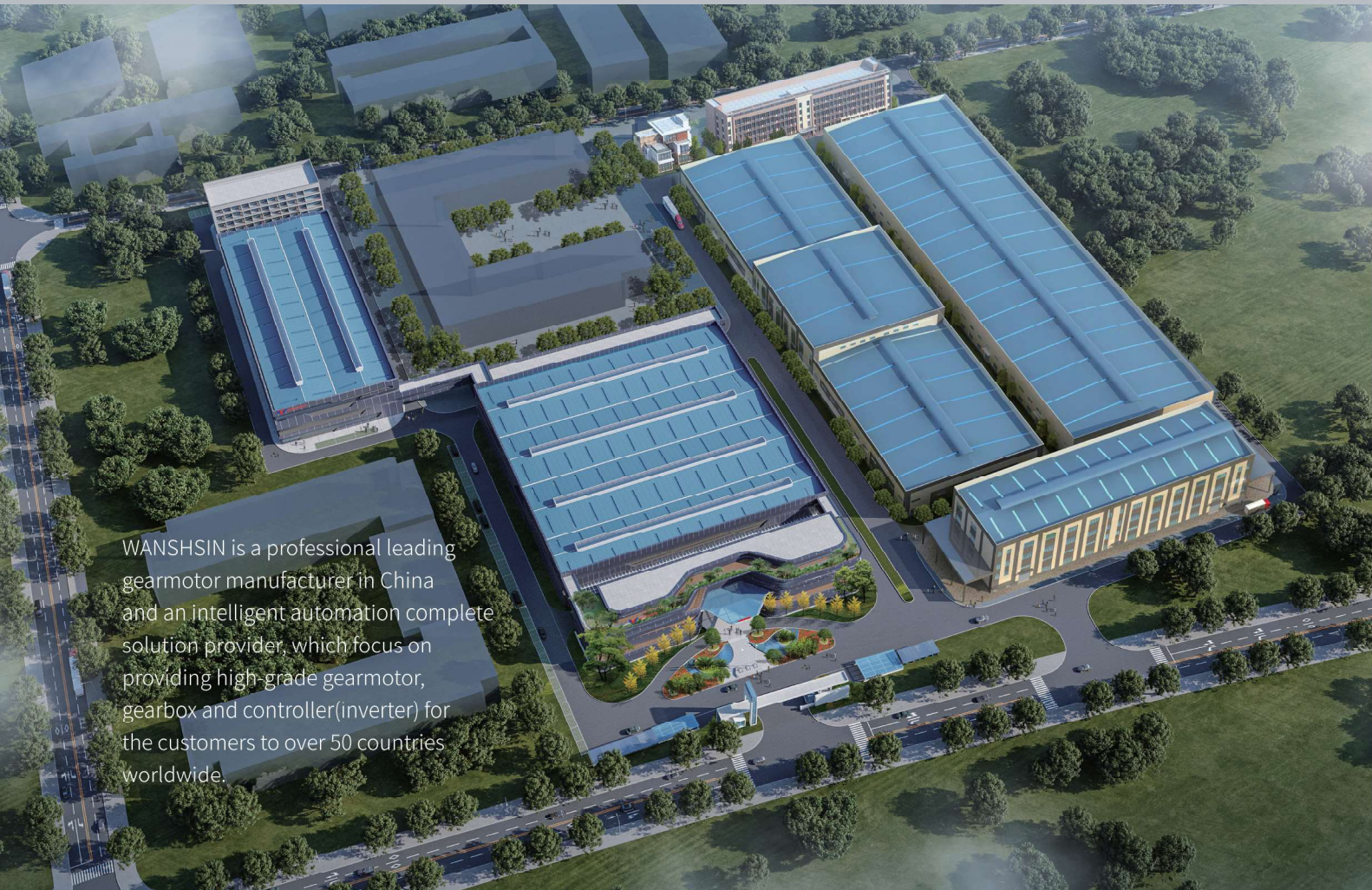




Committed to building a world-class electromechanical brand

BROCHURE OF WANSHSIN

Gear Motor & Gearbox



WANSHSIN is a professional leading gearmotor manufacturer in China and an intelligent automation complete solution provider, which focus on providing high-grade gearmotor, gearbox and controller(inverter) for the customers to over 50 countries worldwide.



Area

120,000 sqm

Employees

800+

R&D Offices

Japan\ShenZhen
ChangSha

Equipment

300+

Certificates

CE\SGS
ISO9001

Patents

80+

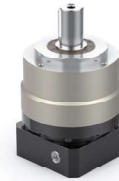
Planetary Gearbox



WAB
 Size: 42~220
 Ratio: 3~100
 Backlash: P0/P1/P2
 Noise: $\leq 56\sim 70$ dB



WVRB
 Size: 42~220
 Ratio: 3~100
 Backlash: P0/P1/P2
 Noise: $\leq 56\sim 70$ dB



WAE
 Size: 50~235
 Ratio: 3~100
 Backlash: P0/P1/P2
 Noise: $\leq 56\sim 70$ dB



WAD
 Size: 64~255
 Ratio: 4~100
 Backlash: P0/P1/P2
 Noise: $\leq 58\sim 70$ dB



WVRBR
 Size: 60~180
 Ratio: 3~200
 Backlash: P1/P2
 Noise: $\leq 63\sim 72$ dB



WAER
 Size: 70~205
 Ratio: 3~200
 Backlash: P1/P2
 Noise: $\leq 63\sim 72$ dB



WADR
 Size: 64~200
 Ratio: 4~200
 Backlash: P1/P2
 Noise: $\leq 63\sim 70$ dB



WPF
 Size: 42~142
 Ratio: 3~100
 Backlash: P2
 Noise: $\leq 58\sim 75$ dB



WPL
 Size: 42~160
 Ratio: 3~100
 Backlash: P2
 Noise: $\leq 58\sim 75$ dB



WTN
 Size: 60~450
 Ratio: 5,10,18
 Reset Positioning
 Precision: ± 15 arcsec
 Noise: 65,67dB



WSH
 Size: 60~210
 Ratio: 3~100
 Backlash: P0/P1/P2
 Noise: $\leq 58\sim 66$ dB



WTH
 Size: 64~200
 Ratio: 4~100
 Backlash: P0/P1/P2
 Noise: $\leq 58\sim 66$ dB



WAT
 Size: 65~210
 Ratio: 1~200
 Backlash: P0/P1/P2
 Noise: $\leq 62\sim 72$ dB



WRS
 Size: 42,60,90
 Ratio: 1,2,3,5
 Backlash: Adjustable
 Noise: $\leq 65\sim 69$ dB



AGV gearbox
 Size: 90
 Ratio: 12,15,18
 Allowable radial force: 7000N
 Noise: ≤ 62 dB

Harmonic Reducer



WCSG-I
 Size: 14~32
 Ratio: 50~120
 Backlash: 15~20arcsec
 Load Torque: 8~253N*m



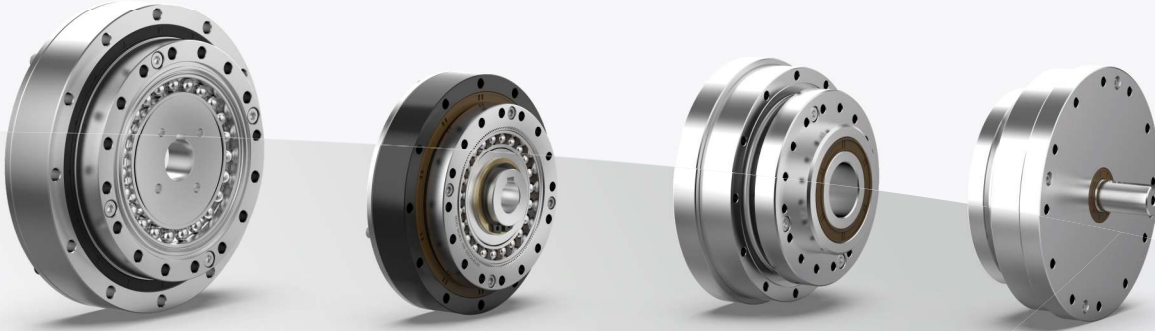
WSHG-I
 Size: 14~32
 Ratio: 50~120
 Backlash: 15~20arcsec
 Load Torque: 8~253N*m



WSHD-I
 Size: 14~25
 Ratio: 50, 100
 Backlash: 15~20arcsec
 Load Torque: 8~253N*m



WCSD-I
 Size: 14~32
 Ratio: 50, 100
 Backlash: 10~20arcsec
 Load Torque: 4.6~143N*m



PRECISION HARMONIC REDUCER

WCSG - 14 - 50 I Standard & Customized

Model	Size	Ratio				Type	Standard & Customized
WCSG	14	50	80	100	-	I . Standard type II . Cross slider coupling type	Standard: Blank SP: Customized
	17	50	80	100	-		
	20	50	80	100	-		
	25	50	80	100	120		
	32	50	80	100	120		

Model	Size	Ratio				Type	Standard & Customized
WSHG	14	50	80	100	-	I . Standard type II . Cross slider coupling type III . Hollow shaft type IV . Shaft input type	Standard: Blank SP: Customized
	17	50	80	100	-		
	20	50	80	100	-		
	25	50	80	100	120		
	32	50	80	100	120		

Model	Size	Ratio		Type	Standard & Customized
WCSD	14	50	100	I . Standard type	Standard: Blank SP: Customized
	17	50	100		
	20	50	100		
	25	50	100		
	32	50	100		

Model	Size	Ratio		Type	Standard & Customized
WSHD	14	50	100	I . Standard type	Standard: Blank SP: Customized
	17	50	100		
	20	50	100		
	25	50	100		
	32	50	100		



Product Photo



WCSG-I Series Reducer



WCSG-II Series Reducer



WSHG-I Series Reducer



WSHG-II Series Reducer



WSHG-III Series Reducer



WSHG-IV Series Reducer



WSHD- I Series Reducer



WCSD- I Series Reducer