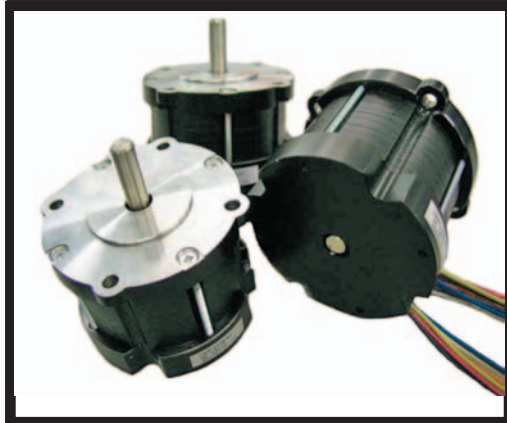
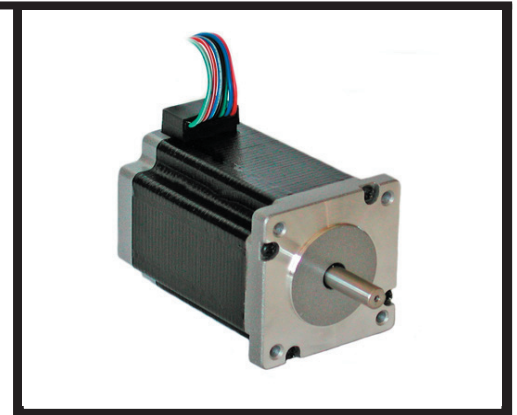


NEW MOTOR SERIES

MT24FK

New range of high torque step motor 60mm square flange:

- 60 x 60 mm square flange
- standard mounting 2.3" NEMA motors
- available in 1, 2 or 3 stacks
- step angle $1.8^{\circ} \pm 5\%$ (200 step per turn)
- bipolar holding torque from 1.00 to 3.3 Nm
- phase current 3.0 A
- phase resistance 1.30 ohm
- phase inductance 3.20 mH
- rotor inertia 840 g.cm²



MT23AS

A new develop of high torque step motor with round shape and standard mounting 2.3" NEMA round flange:

- Ø 71.0 mm flange
- standard mounting of 2.3" NEMA motors
- available in six stacks versions
- step angle $1.8^{\circ} \pm 5\%$ (200 step per turn)
- bipolar holding torque from 0.45 Nm to 2.20 Nm
- phase current from 1.5 A to 3.1 A
- rotor inertia from 165 g.cm² to 660 g.cm²

MT34FH

The power of high torque 3.4' motor series also in round shape version:

- 86 x 86 mm square flange and round shape
- available in 1, 2 or 3 stacks
- step angle $1.8^{\circ} \pm 5\%$ (200 step per turn)
- bipolar holding torque from 3.00 to 7.5 Nm
- phase current 6.6 A
- rotor inertia g.cm²



NEW MOTOR SERIES

MT23FKxxxxxG MT34FNxxxxxG

MT23FK and MT34FN motor series can be supplied with a gearbox mounted :

- ratio from 3 to 150
- number of gear trains from 2 to 4
- length from 45mm to 60 mm
- Peak torque from 4.5 Nm to 25.0 Nm

Image not available



MT16AT MT19AT

A new develop of hybrid step motor :

- motor length \varnothing 71.0 mm flange
- standard mounting of 2.3" NEMA motors
- available in six stacks versions
- step angle $1.8^{\circ} \pm 5\%$ (200 step per turn)

Ever
ELETTRONICA

EVER SNC DI ING. CALDI & C.

Via del Commercio, 2/4

Loc. San Grato, Z.I. - 26900 LODI (ITALY)

Tel.++39 0371 412318 - Fax++39 0371 412367

e-mail : infoever@everelettronica.it

web: www.everelettronica.it