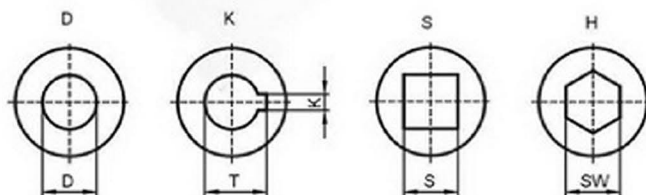
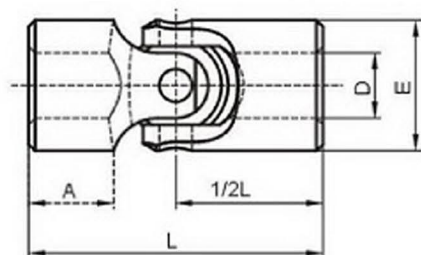
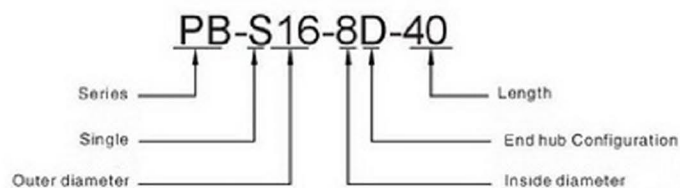




## UNIVERSAL JOINT

Example



	M (H7)	E	L	A	1/2L	K (JS9)	T	S (H8)	SW (H8)
PB-S13	6	13	40	13	20				
PB-S16	8	16	40	11	20	2	9	8	8
PB-S20	10	20	45	11.5	22.5	3	11.4	10	10
PB-S22	12	22	50	14	25	4	13.8	12	12
PB-S25	14	25	56	15	28	5	16.3	14	14
PB-S29	16	29	65	18	32.5	5	18.3	16	16
PB-S32	18	32	72	19	36	6	20.8	18	18
PB-S35	20	35	78	21.5	39	6	22.8	20	20
PB-S37	20	37	82	21	41	6	22.8	20	20
PB-S40	22	40	95	25.5	47.5	6	24.8	22	22
PB-S45	25	45	108	31	54	8	28.3	25	25
PB-S50	30	50	122	35	61	8	33.3	30	30
PB-S60	35	60	160	49	80	10	38.3	35	35
PB-S70	40	70	140	33.5	70	12	43.3		
PB-S80	45	80	160	38	80	14	48.8		
PB-S95	50	95	190	45	95	14	53.8		