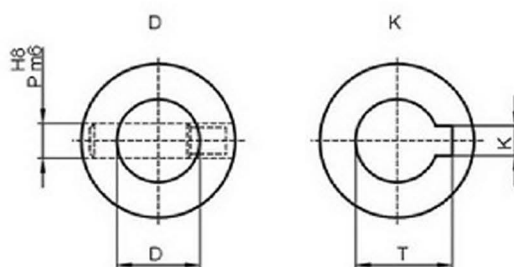
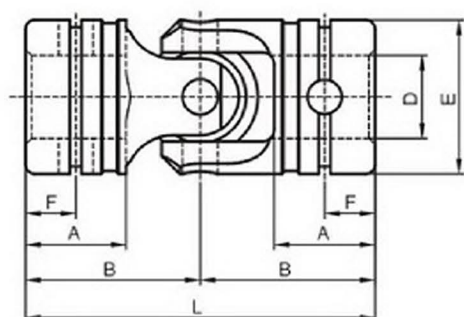
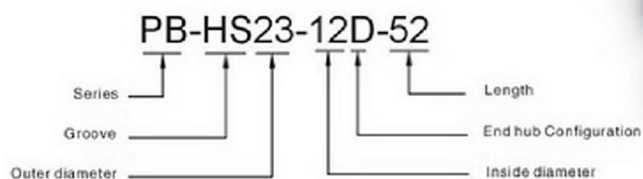




UNIVERSAL JOINT

Example



Size Part No.	D (H7)	E	L	B	A	F	P(H8)	K(JS9)	T
PB-HS16	8	16	36	18	10	5	3.5	2	9
PB-HS20	10	20	42	21	12	6	4.5	3	11.4
PB-HS23	12	23	52	26	15	7.5	5	4	13.8
PB-HS26	14	26	59	29.5	17	8.5	5.8	5	16.3
PB-HS30	16	30	74	37	22	11	6.5	5	18.3
PB-HS32	18	32	81	40.5	23.5	11.75	7	6	20.8
PB-HS36	20	36	87	43.5	25	12.5	8	6	22.8
PB-HS40	22	40	94	47	27	13.5	9	6	24.8
PB-HS45	25	45	105	52.5	30	15	10	8	28.3
PB-HS50	30	50	122	61	35	17.5	11.5	8	33.3