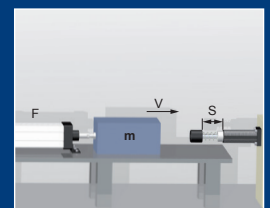


Speed Controls

- WM-V 10
- WM-V 20
- WM-V 30
- WM-V 40
- WM-V 50
- WM-V 60
- WM-V 70



ONLINE
Calculation and
2D / 3D CAD Download



Features

Speed rates:

- 0,015 - 40 m/min

Adjustment:

- Variable

Material:

- Housing: black finish
- Piston rod: hardened stainless steel

RoHS-conform:

- Directive 2002/95/EC

Extended Life Time:

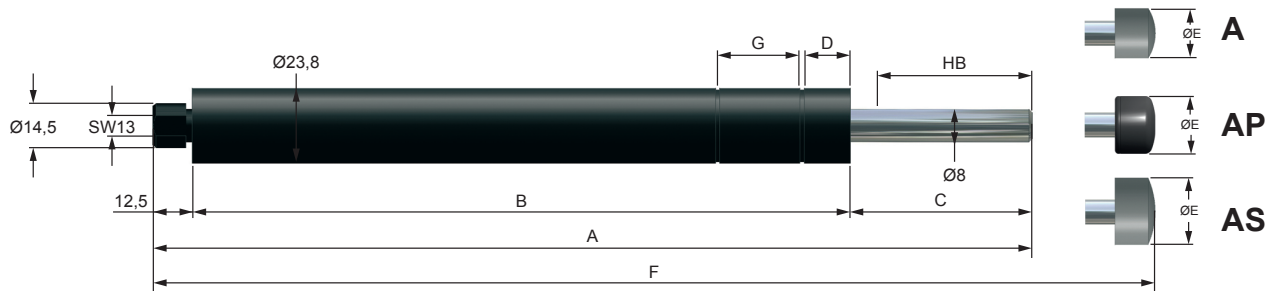
- Special Seals + Oils

Piston:

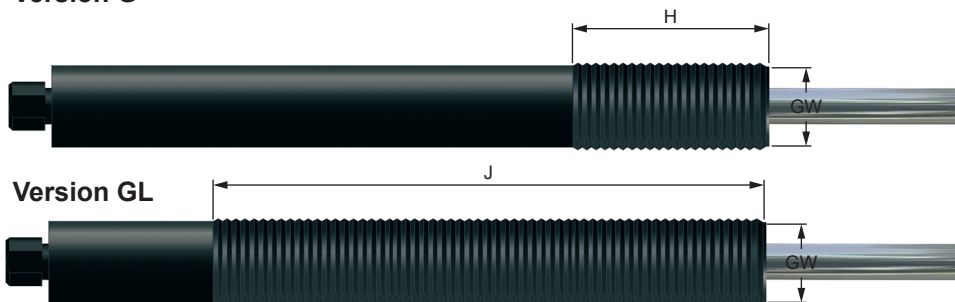
- From high-strength bronze

Temperature:

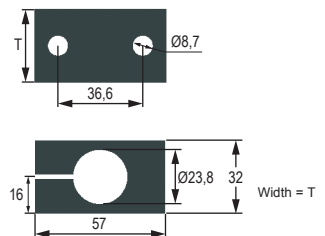
- Standard: -20°C - +80°C
- Low-temperature: -50°C - +60°C
- High-temperature: 0°C - +120°C



Version G



Klemmflansch



Code : V10 - V30: 82013 / V40 - V70: 82043

Version GL - Optional thread M25x1,5 (Code: GLT)

DIMENSIONS

	A	B	C	D	øE (A)	F (A)	øE (AP)	F (AP)	øE (AS)	F (AS)	G	T	H	J	GW
	mm	mm	mm	mm	mm	mm	mm	mm	mm	mm	mm	mm	mm	mm	
WM-V 10	161	128	21	21,5	16	166	21	168	16	166	25,4	32	40	93	M24x1,5
WM-V 20	202	157	33	19,1	16	207	21	209	16	207	25,4	32	40	122	M24x1,5
WM-V 30	278	208	58	14,6	16	283	21	285	16	283	25,4	32	40	173	M24x1,5
WM-V 40	351	256	83	14,6	16	356	21	358	16	356	25,4	50	40	221	M24x1,5
WM-V 50	417	298	106	14,6	16	422	21	424	16	422	25,4	50	40	263	M24x1,5
WM-V 60	524	381	131	14,6	16	529	21	531	16	529	25,4	50	40	-	M24x1,5
WM-V 70	584	415	156	14,6	16	589	21	591	16	589	25,4	50	40	-	M24x1,5

PERFORMANCE

	Stroke	Speed force		Speed rates		Return spring force		Weight
	mm	min. N	max. N	m / min -1	m / min -2	min. N	max. N	g
WM-V 10	13	25	3.700	12 - 40	0,015 - 15	12	28	350
WM-V 20	25	25	3.700	12 - 40	0,015 - 15	12	28	450
WM-V 30	50	35	3.700	12 - 40	0,015 - 15	15	32	550
WM-V 40	75	45	3.700	12 - 40	0,015 - 15	15	32	650
WM-V 50	100	45	3.700	12 - 40	0,015 - 15	15	32	800
WM-V 60	125	45	3.700	12 - 40	0,015 - 15	16	40	970
WM-V 70	150	45	3.700	12 - 40	0,015 - 15	16	40	1050

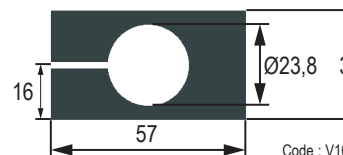
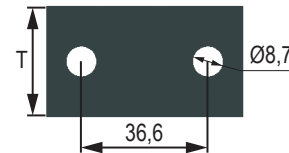
Accessories

Lock nut



GW*	Code
M24x1,5	21232
M25x1,5	21232T

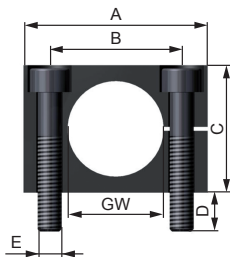
Clamping flange



Wight=T

Code : V10 - V30: 82013 / V40 - V70: 82043

Rectangular Flange



GW*	A mm	B mm	C mm	D mm	E mm	T mm	Code
M24x1,5	46	33	32	6	M6	25	S21233

Width = T

Setting

The Speed rate is stopped in the adjusting screw at the back-sided end of the shock absorber.

Set possibility on the scale 0-30

0 = high Speed rate

30 = low Speed rate



Important Information

Safety Instructions

Before Installation, commissioning, servicing and repair the data sheet is to be noticed. This work may only be performed by trained, introduced staff.

Electric connections according to the suitable national regulation.
For Germany: VDE regulation VD E0100

Before all repair and servicing works the energy supplies (main switch, etc.) have to be switched off! Moreover, measures are necessary to prevent an unintentional reconnect.
For example, a warning sign „service works“ or „maintenance work“, applied to the switch.

Designated use

Check before installation and make sure the type name on the speed control or on the packaging is corresponding with delivery note.

Speed control are maintenance-free and ready for installation.

- Temperature influence: at higher temperatures the speed control characteristic will change.
- Movable loads have to be protected during the installation and maintenance against unintentional processes.
- In operation outside the allowed temperature range, the speed control can lose his function. Due to heat radiation don't paint the speed control.
- Fluids, gases and a dirty environment can affect or destroy the sealing system of the shock absorber. The result could be a failure malfunction. Piston rod and sealing system has to be protected against fluids, gases and a dirty environment.
- Damages at the piston rod can destroy the sealing system. Don't grease or oil the piston rod.
- Avoid traction forces on the piston rod to present internal damages.
- The speed control can be pulled out of the construction during the impact. The construction needs to be able to resist the max counterforce. Sufficient security must be calculated.
- A fixed stop must be set in the end positions 1 - 1,5 mm before the end of the stroke.

Important Information

Basic information

Speed control may under no circumstances be:

-painted



-welded



-held with clamps



-used on pull



In hazardous environments (dirt, humidity, oil) speed control must be protected against damage and failure with the necessary accessory. If several Speed control are used on the same application, the deceleration has to be distributed equally. The Weforma catalogue shows technical data with both minimum and maximum values. If a product is to be used in continuous operation and within a range of 20% from the minimum and maximum values shown, then written confirmation of suitability of use from Weforma is necessary.

Installation situation

The installation situation is any, however always in such a way that the complete speed control stroke can be used. The speed control must be mounted like that the forces in centerline about the piston rod are initiated. The maximum angle out of centre amounts to 2°.

Liability

Due to the number of possible uses of our products and the conditions of use that lie outside of our scope of influence, we accept no liability as to whether the purchase object is suitable for the Client's intended purpose. The verification to this effect, in particular the verification as to whether the purchase object is suitable for the planned use, is the responsibility of the Client alone, unless expressly agreed otherwise in writing.

For the reasons we accept no liability for the suitability of the purchase object for the purpose intended by the Client, except in cases of intent or gross negligence.

With damages, the not designated use and from high-handed, in these instructions do not originate to intended interventions, any guarantee and liability claim goes out towards the manufacturer.

Guarantee

By non-use of the original spare parts the guarantee claim goes out.

Environment protection

By the exchange from damaged parts is to be respected to a proper disposal.