

Rotary Dampers high-torque range (360°)

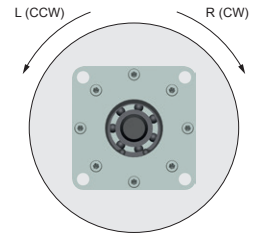
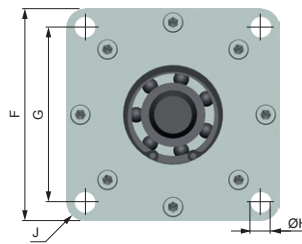
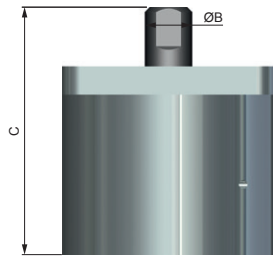
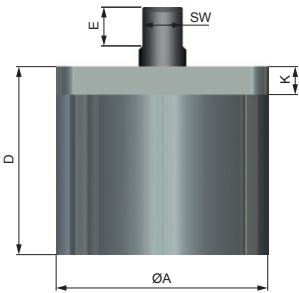
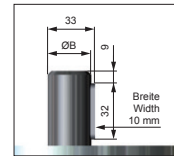
WRD-HK 3515 / 5550 / 10060

Controlled damping of continuous rotary movements
High torques up to 110 Nm
Damping clockwise or counter-clockwise, adjustable

Material: Aluminium, Steel
Temperature: -10°C - +60°C (14°F - +140°F)
RoHS compliant: Directive 2002/95/EC



WRD-HK 10060



R (CW)*	L (CCW)*	M* max. (Nm)	M* min. (Nm)	M* Reverse Running L/R	Rotational speed	Material	Weight kg (lbs)
WRD-HK 3515-R	WRD-HK 3515-L	8 (71)	1 (9)	0,5 - 1,0 (4 - 9)	30 U/min (rpm) max.	Aluminum / Steel	0,27 (1)
WRD-HK 5550-R	WRD-HK 5550-L	40 (354)	5 (44)	1,0 - 3,0 (9 - 27)			1,95 (4)
WRD-HK 10060-R	WRD-HK 10060-L	110 (974)	10 (89)	5,0 - 7,0 (44 - 62)			7,4 (16)

	ØA	ØB	C	D	E	F	G	ØH	J	K	SW
	mm (inch)										
WRD-HK 3515	45 (1.77)	10 f7 (0.39)	60 (2.36)	45 (1.77)	10 (0.39)	47 (1.85)	38 (1.5)	5,5 (0.22)	2,5 (0.1)	10 (0.39)	8 (0.31)
WRD-HK 5550	90 (3.54)	20 f7 (0.79)	105 (4.13)	80 (3.15)	16,5 (0.65)	90 (3.54)	74 (2.91)	8,5 (0.33)	8 (0.31)	12 (0.47)	17 (0.67)
WRD-HK 10060	150 (5.91)	30 f7 (1.81)	160 (6.3)	110 (4.33)	-	150 (5.91)	126 (4.96)	13 (0.51)	10 (0.39)	20 (0.79)	-

* R (CW): Clockwise
 L (CCW): Counter-clockwise
 M: Torque