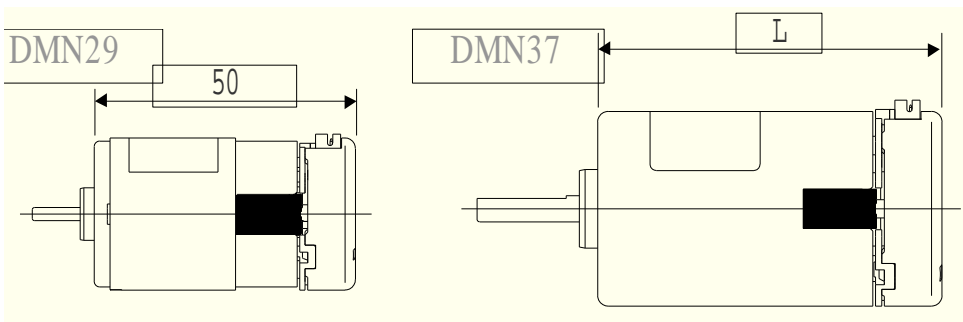


Options

Options available for your various needs.

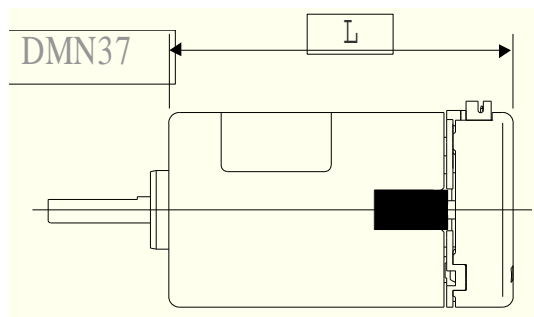
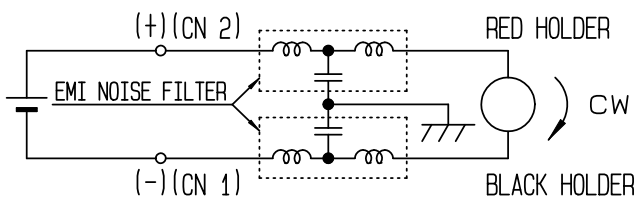
	DMN29	DMN37
Built-in 2 pin connector	Available	Available
T type Noise filter	N/A	Available
12 pulse, 2 ch magnetic encoder	Available	Available
1000 pulse, 2ch optical encoder	N/A	Available

Built-In 2 Pin Connector



	mm	inch
DMN37S	52.7	2.075
DMN37B	60.7	2.39
DMN37K	65.7	2.587
DMN37J	70.7	2.784
DMN37H	80.7	3.178

T type Noise Filter



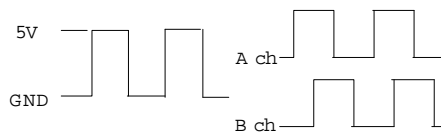
	mm	inch
DMN37S	52.7	2.075
DMN37B	60.7	2.39
DMN37K	65.7	2.587
DMN37J	70.7	2.784
DMN37H	80.7	3.178

Options

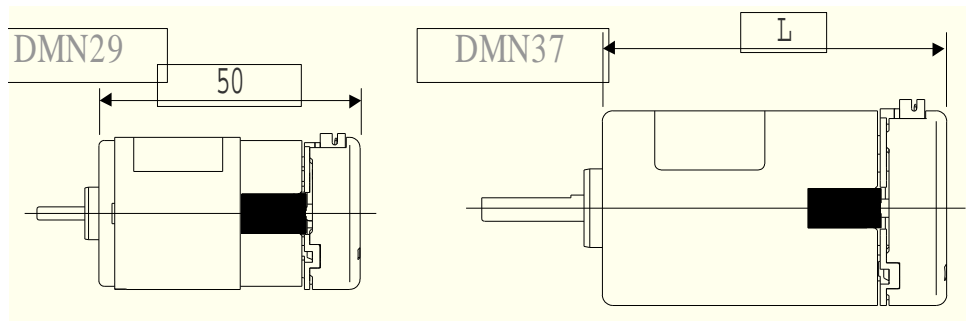
12 Pulse 2ch Magnetic Encoder

Encoder spec

Supply voltage	DC 5 V
Supply current	10 mA (typical)
Resolution	12 PPR
Number of channel	2 (A, B)
Duty	50%
Outputs	Open collector



CN1	Vcc DC5V
CN2	GND
CN3	DC24V(-)
CN4	DC24V(+)
CN5	Phase B
CN6	Phase A



	mm	inch
DMN37S	52.7	2.075
DMN37B	60.7	2.39
DMN37K	65.7	2.587
DMN37J	70.7	2.784
DMN37H	80.7	3.178

High Resolution 1000 Pulse 2ch Optical Encoder

Encoder spec

Supply voltage	DC 5 V
Current consumption	90 mA (typical)
Resolution	1000 PPR
Number of channel	2 (A, B)
Duty	50%
Outputs	TTL

