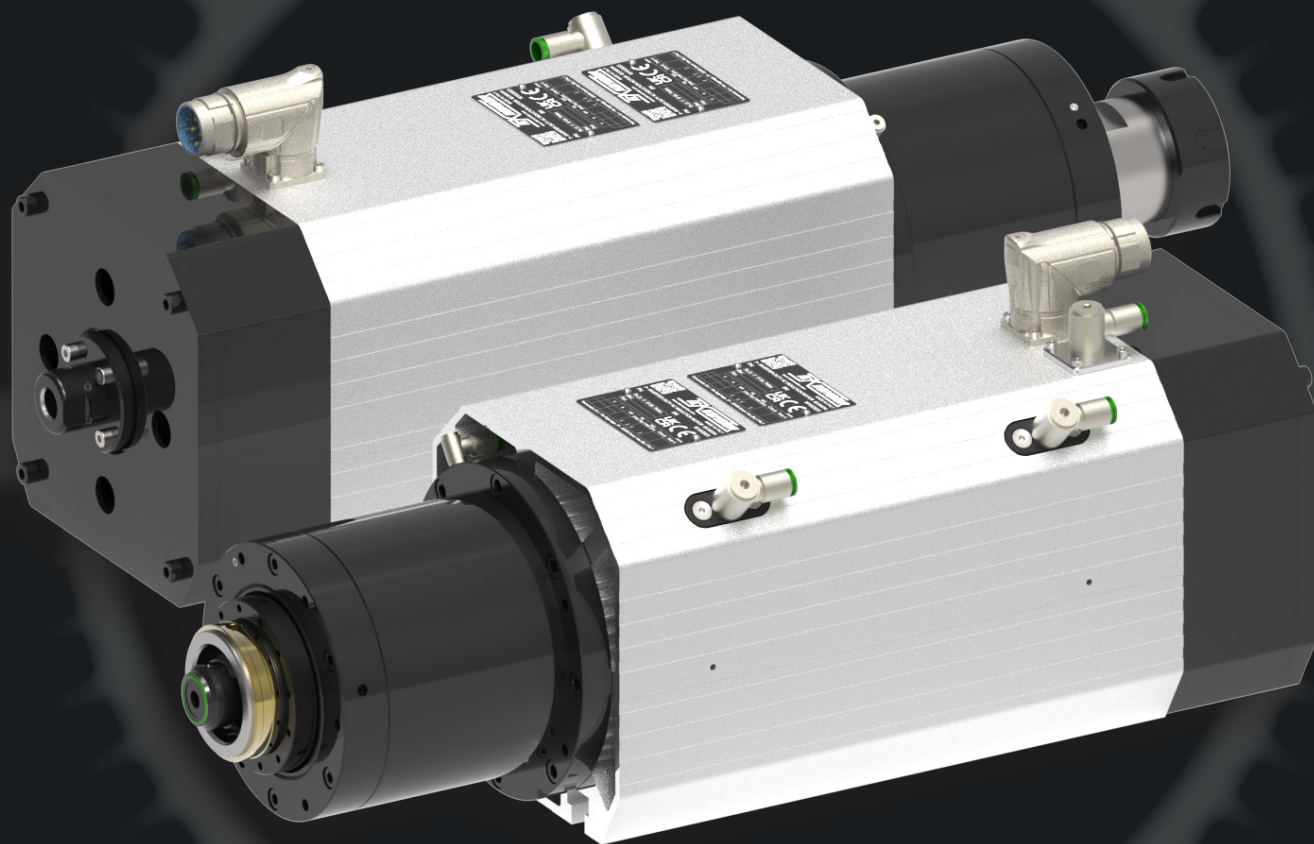


TEKNOMOTOR



C071 Line

TEKNOMOTOR S.R.L.

Via Argenega, 31 - 32038
Setteville - Quero Vas (BL) - Italy
Tel: +39 0439 787950
www.teknomotor.com
info@teknomotor.com



TEKNOMOTOR S.R.L.



MADE IN ITALY. MADE BY US.

Designed to improve your CNC machining experience. With a range of innovative features, Teknomotor's new line of **C071** spindles offer unmatched versatility to suit your specific needs.

THE MECHANICS OF AN ATC IN AN MTC IDENTITY.

The spindles with **Manual tool change (MTC)** and **Quick tool change (QTC)** of the **C071** line were made with typical mechanics of Automatic tool change (ATC) spindles. So, simplicity meets the most advanced solutions in the industry. This makes spindles of **C071** line unique.

One of the key features of this new line is the availability of **liquid cooling** and a **rotary union** in selected models. This cooling system ensures consistent temperature control during prolonged machining sessions, preventing overheating and ensuring top-notch precision in your work.

These **C071** spindles are offered in power ratings ranging from **5.5 kW** up to a robust **12 kW**, providing the necessary strength to tackle a wide array of materials with ease. Additionally, they offer a variable speed range from a base speed of **6,000 rpm** to a maximum speed of **24,000 rpm**, giving you the flexibility to adapt to different machining tasks. Experience the new way of CNC machining with Teknomotor's **C071** spindle series – where innovation meets performance, and precision meets power.

Contact us: info@teknomotor.com
we are by your side.

**A truly applied quality
management system**

COMPANY WITH
QUALITY SYSTEM
CERTIFIED BY DNV
ISO 9001

Continuous improvement is the motor that drives us.
Plan-do-check-act is not a doggerel to boast about, but our way of life.

From start to finish, every electrospindle is made in Italy, inside our factories in Quero Vas, by the expert hands of Teknomotor's operators and technicians and under the watchful eye of our quality control team and designers.

At a time when many Companies choose outsourcing manufacturing, we guarantee that our products are made in Italy and made by Us, now and always.



Customization

Our team of engineers is an excellence in designing customized motors that guarantee the best performances meeting even the most specific needs of our customers' machines.



Service

Our technical-sales department is organized in order to be a reference point for all our customers, both before and after sale, providing constant and immediate specialistic support to every request.



Customer satisfaction

We offer to our customers the guarantee of purchasing the product that best meets their needs. We do that through an accurate analysis of the requirements and a direct dialogue with our specialized technical team.



Reliability

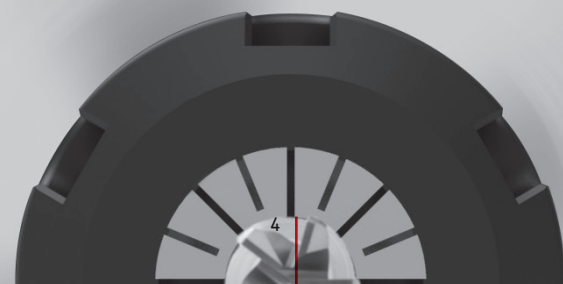
We manage design and manufacture completely, directly and internally. Each component of our electrospindles is manufactured and assembled by expert hands of our operators and technicians and goes through an intense quality control that guarantees the reliability of our products.

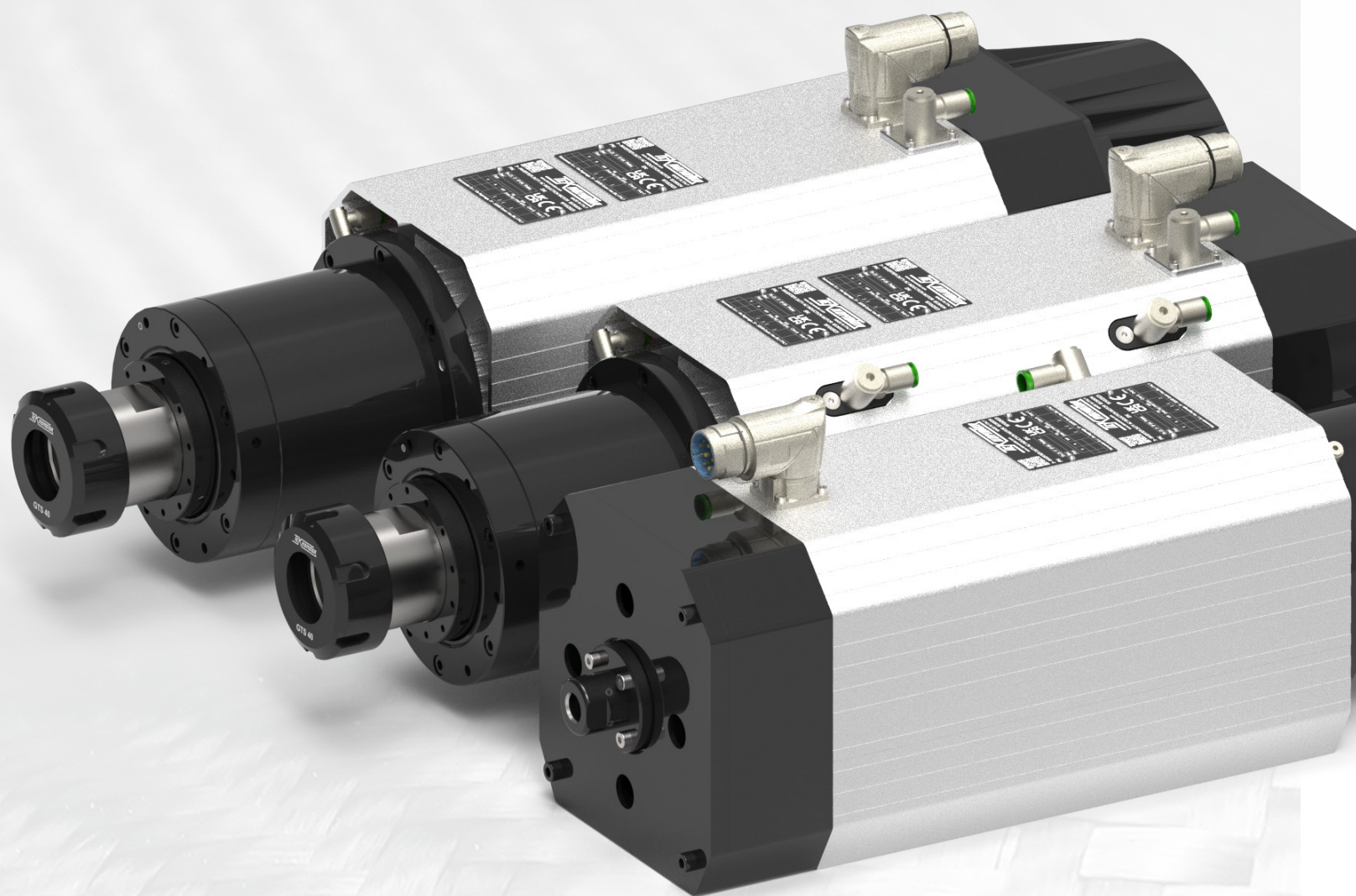


Product design

Our motors are designed to best meet all the market requirements combining maximum accuracy, durability, efficiency, reliability and innovation with a clean and elegant aesthet.

NOT ALL THE SPINDLES ARE THE SAME

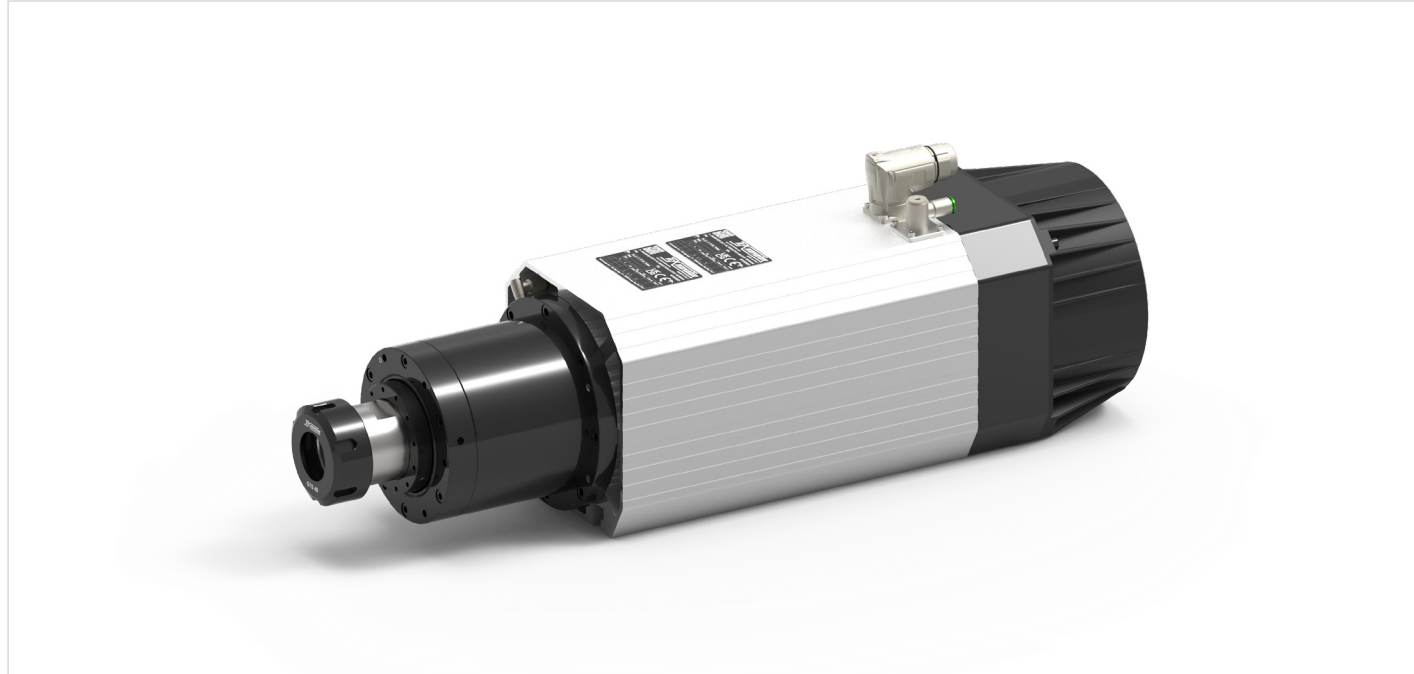




ER40

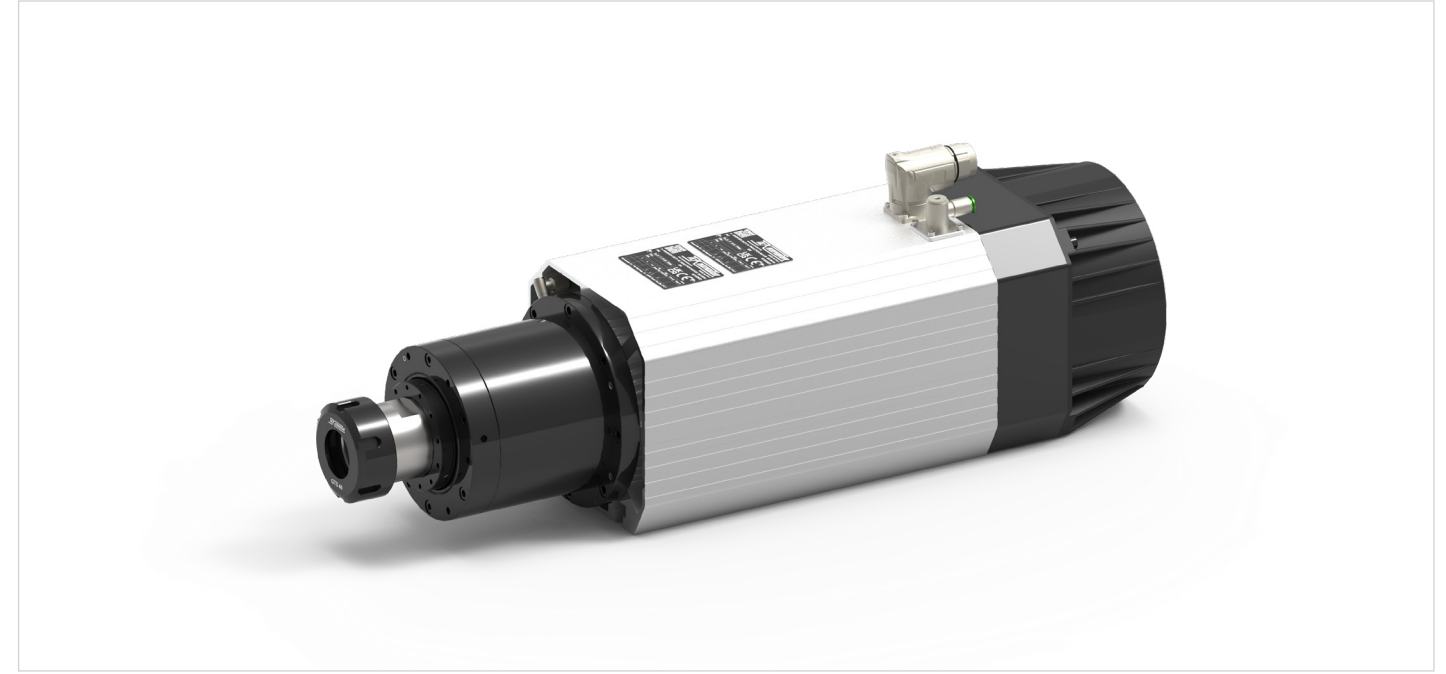
- The motors are highly robust and powerful, featuring pairs of ceramic bearings both at the front and rear ends.
- The impressive maximum speed of 24,000 rpm for an ER40 motor is something very exclusive.
- The case-hardened shaft and the thread produced by grinding guarantee extreme precision and long-lasting durability.
- Liquid cooling allows for precise temperature control, extending the motor's lifespan. Ideal for heavy-duty tasks or extended work cycles.
- The optional rotary joint allows air or coolant to pass through the shaft, optimizing tool performance in certain types of machining.
- Nose pressurization enables work in environments with coolant liquids or fine powders, such as carbon or epoxy materials.
- Optional pre-defined length cables are available to adapt to connectors.

C071-C-2DB-P-ER40-SV-RH



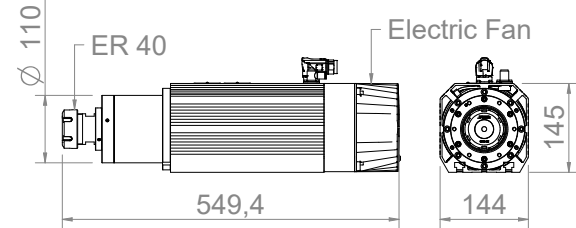
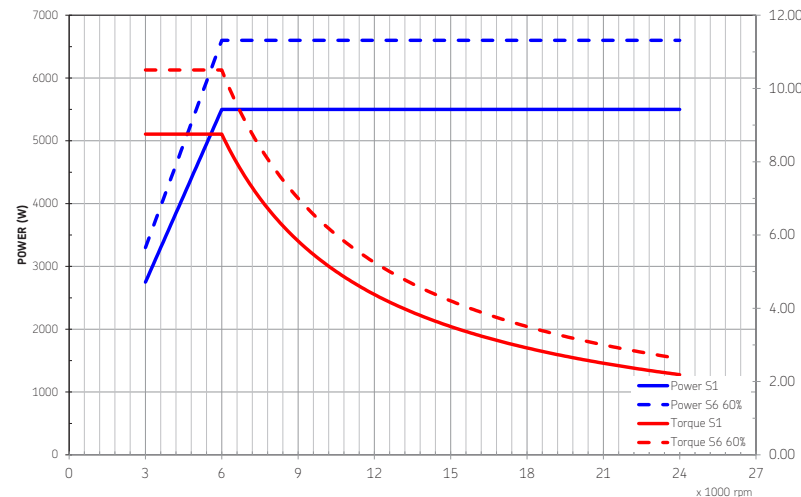
Power	5.5 kW / 6.6 kW	Tool holder	ER40
Torque	8.75 Nm / 10.50 Nm	Voltage	380 V
Base Speed	6000 rpm	Weight	27.12 Kg
Max Speed	24000 rpm	Order Code	COMC0710004

C071-C-2DB-P-ER40-SV-RH

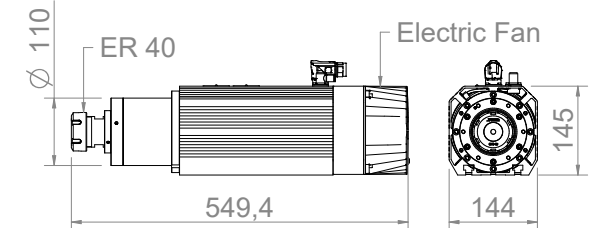
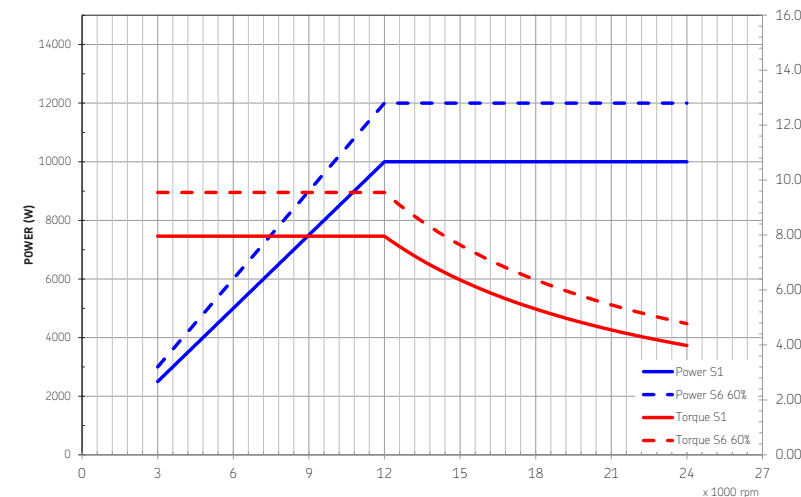


Power	10 kW / 12 kW	Tool holder	ER40
Torque	7.96 Nm / 9.55 Nm	Voltage	380 V
Base Speed	12000 rpm	Weight	27.14 Kg
Max Speed	24000 rpm	Order Code	COMC0710011

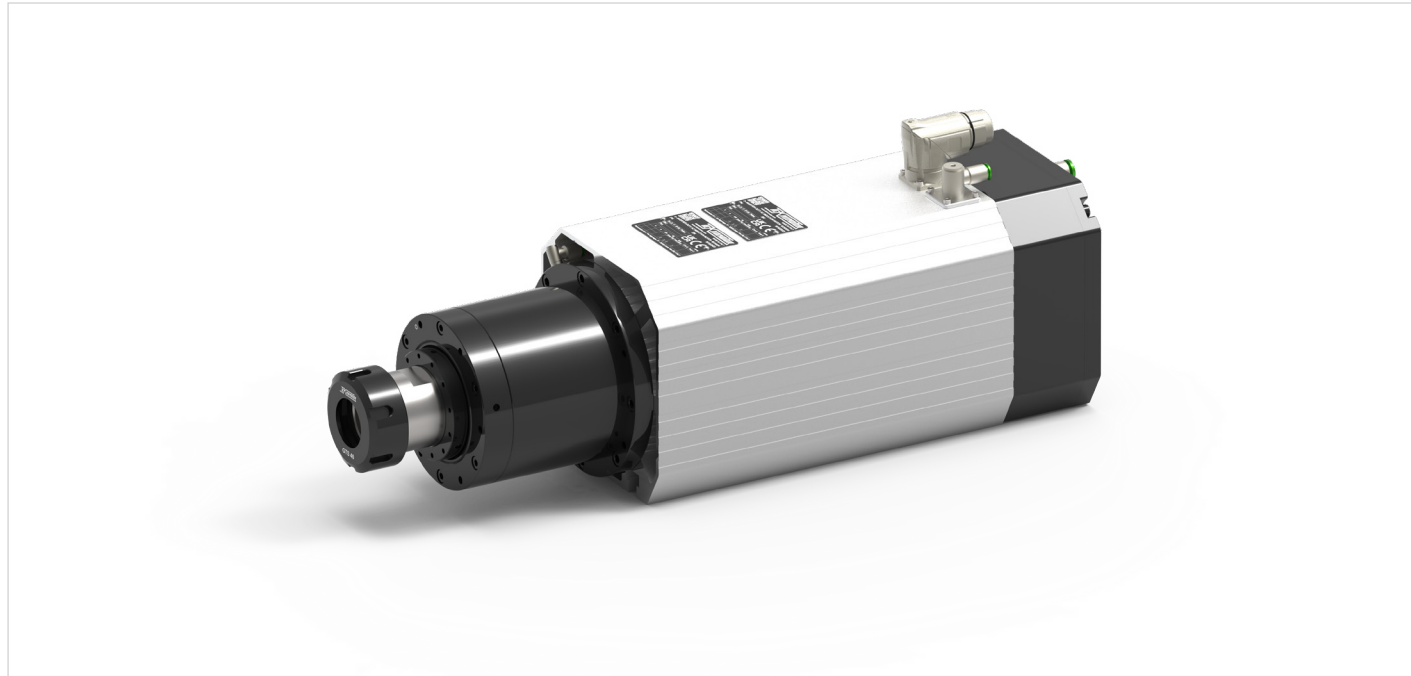
ATC71-C 4 POLES - TORQUE AND POWER CURVES



ATC71-C 4 POLES - TORQUE AND POWER CURVES

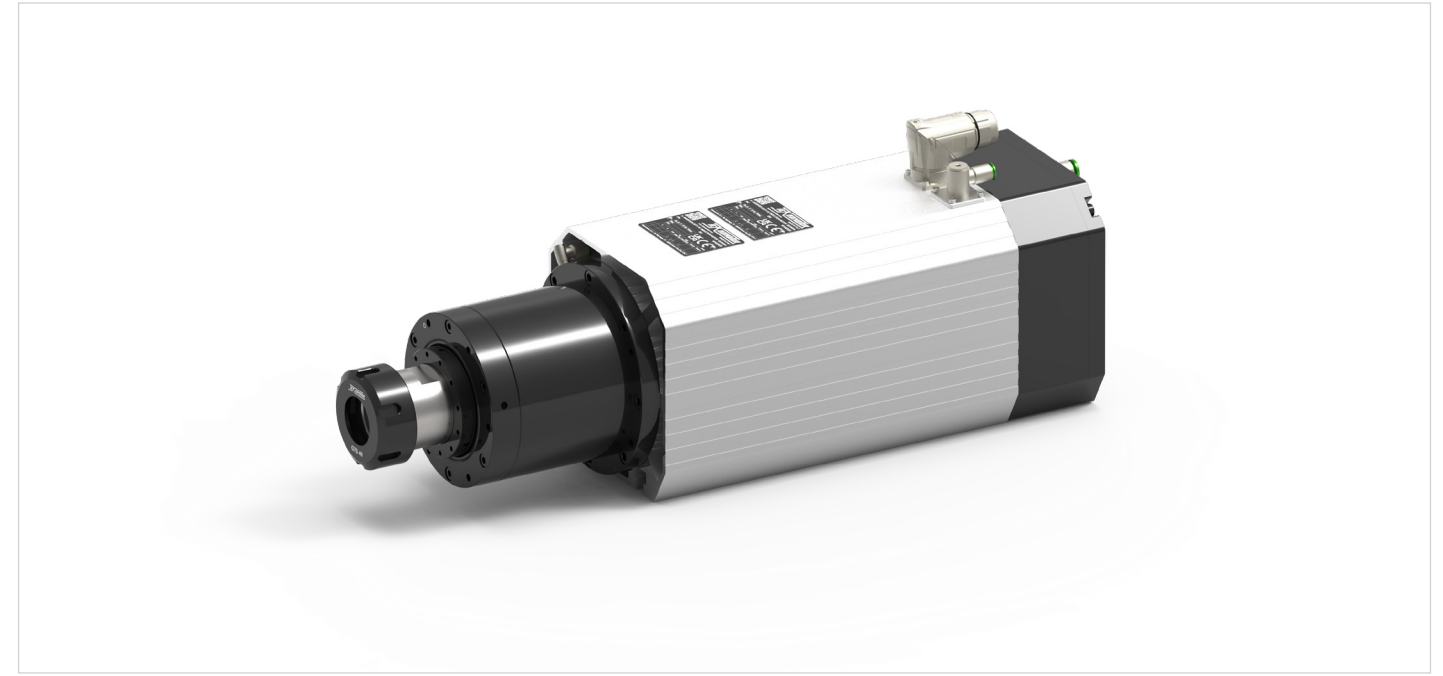


C071-C-2DB-P-ER40-AC-RH



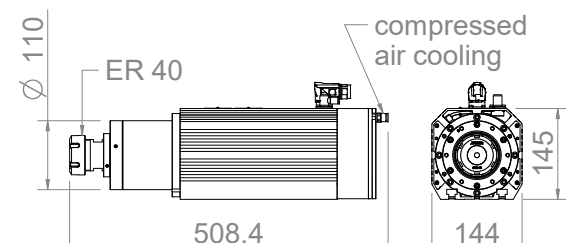
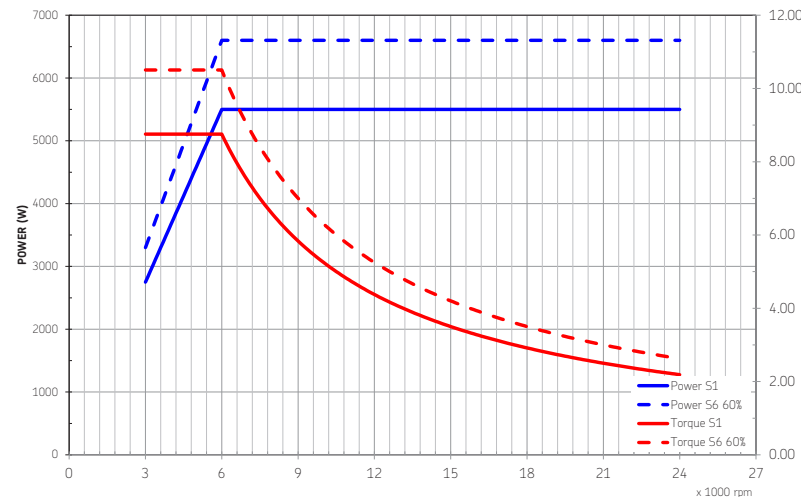
Power	5.5 kW / 6.6 kW	Tool holder	ER40
Torque	8.75 Nm / 10.50 Nm	Voltage	380 V
Base Speed	6000 rpm	Weight	26.29 Kg
Max Speed	24000 rpm	Order Code	COMC0710005

C071-C-2DB-P-ER40-AC-RH

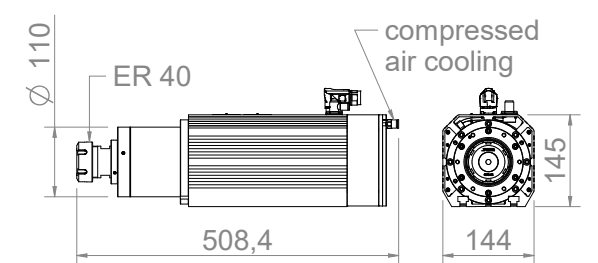
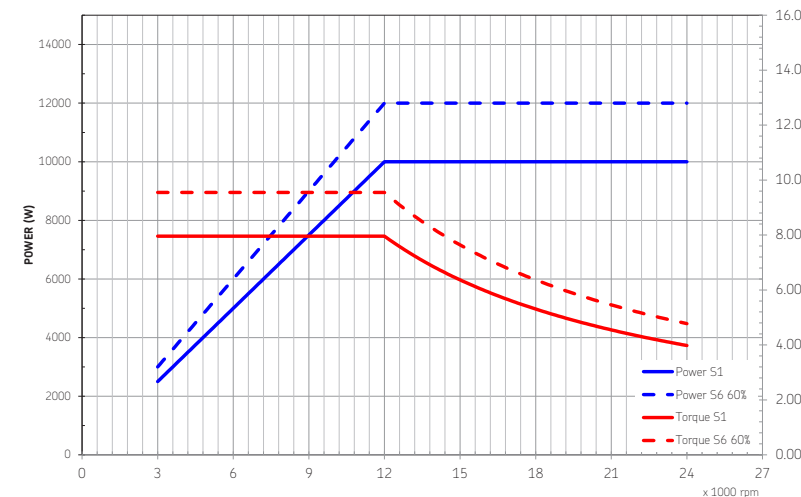


Power	10 kW / 12 kW	Tool holder	ER40
Torque	7.96 Nm / 9.55 Nm	Voltage	380 V
Base Speed	12000 rpm	Weight	26.31 Kg
Max Speed	24000 rpm	Order Code	COMC0710012

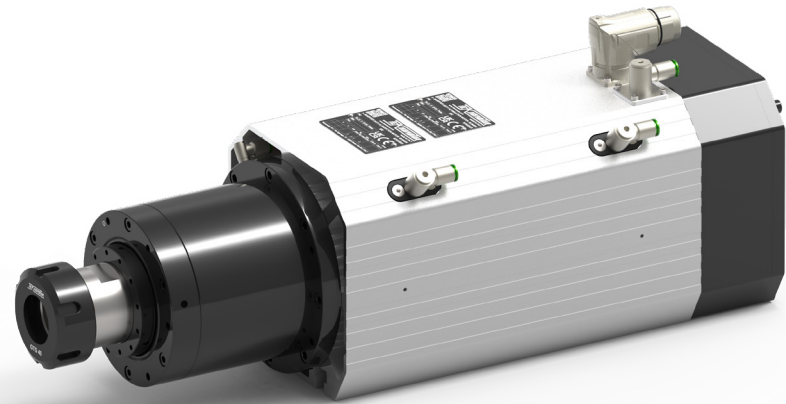
ATC71-C 4 POLES - TORQUE AND POWER CURVES



ATC71-C 4 POLES - TORQUE AND POWER CURVES



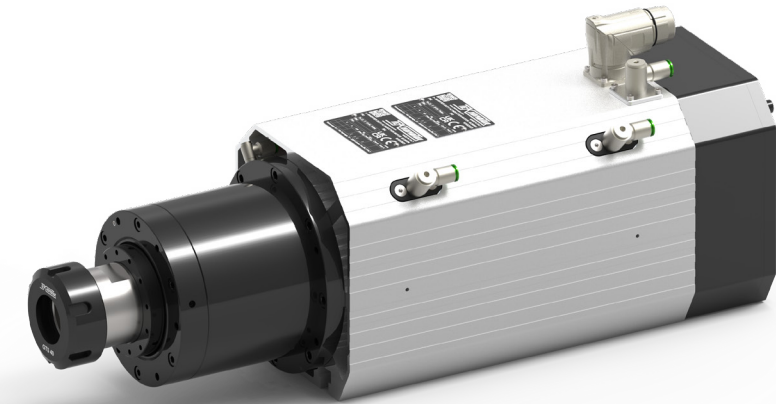
C071-C-2DB-P-ER40-LC-RH



Liquid Cooled 

Power	5.5 kW / 6.6 kW	Tool holder	ER40
Torque	8.75 Nm / 10.50 Nm	Voltage	380 V
Base Speed	6000 rpm	Weight	26.84 Kg
Max Speed	24000 rpm	Order Code	COMC0710006

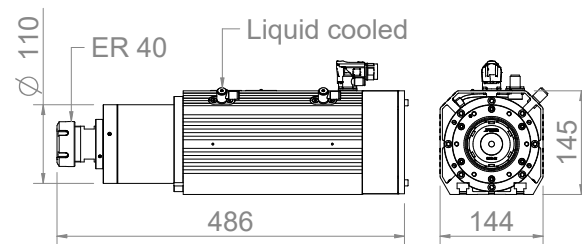
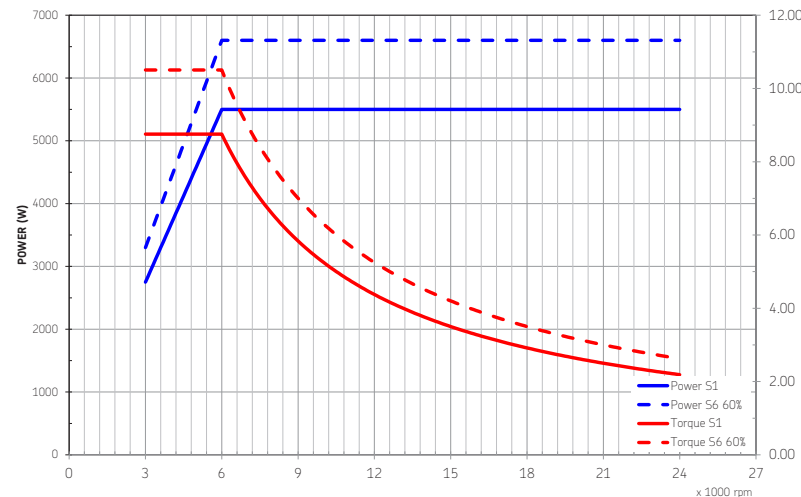
C071-C-2DB-P-ER40-LC-RH



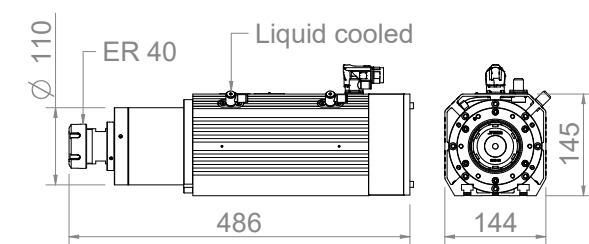
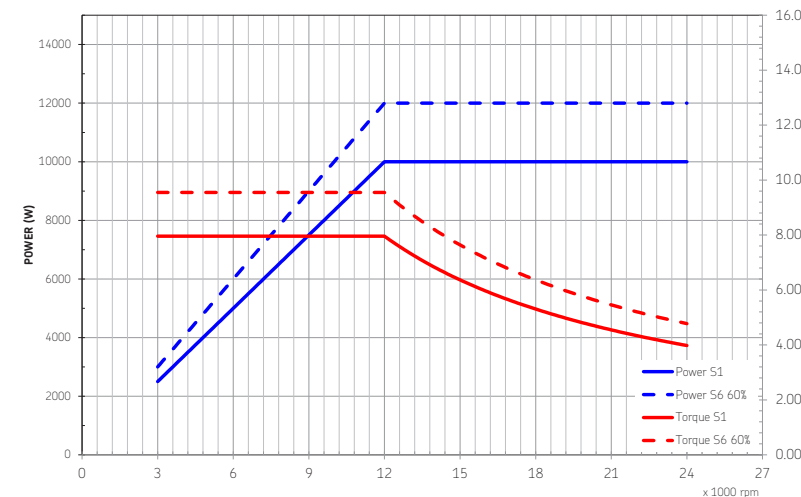
Liquid Cooled 

Power	10 kW / 12 kW	Tool holder	ER40
Torque	7.96 Nm / 9.55 Nm	Voltage	380 V
Base Speed	12000 rpm	Weight	26.84 Kg
Max Speed	24000 rpm	Order Code	COMC0710013

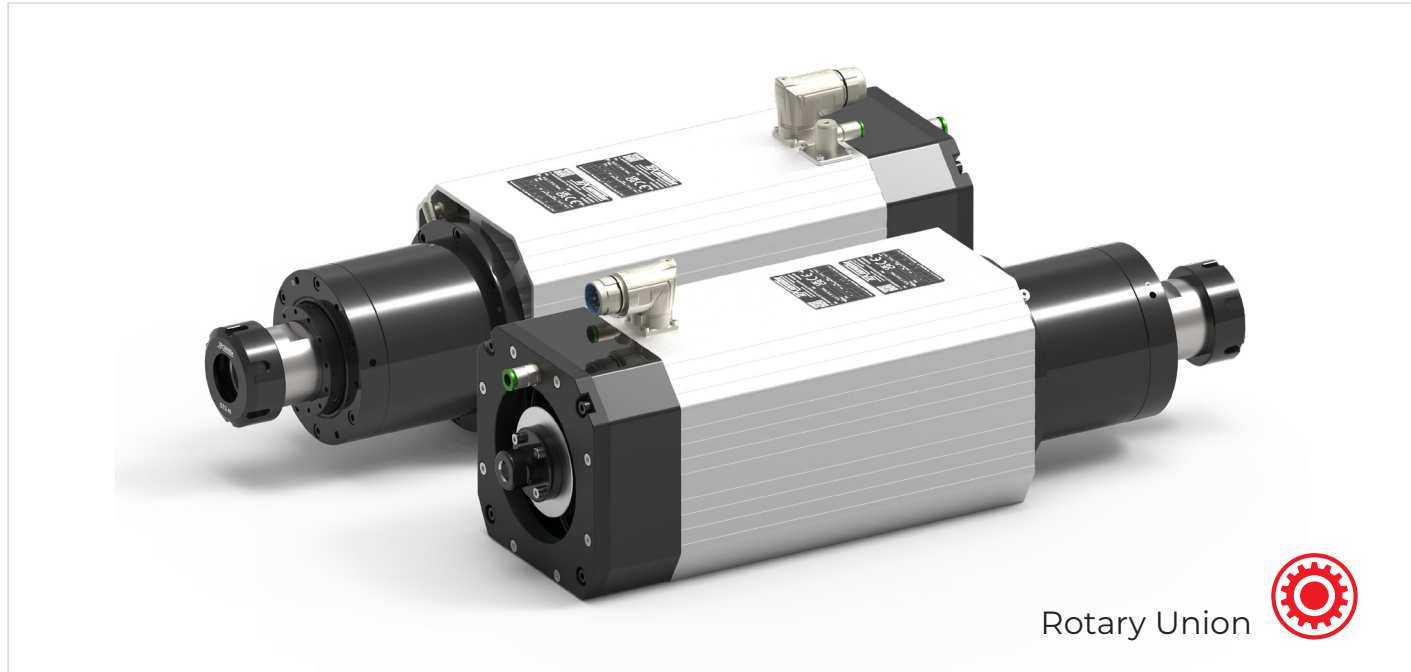
ATC71-C 4 POLES - TORQUE AND POWER CURVES



ATC71-C 4 POLES - TORQUE AND POWER CURVES



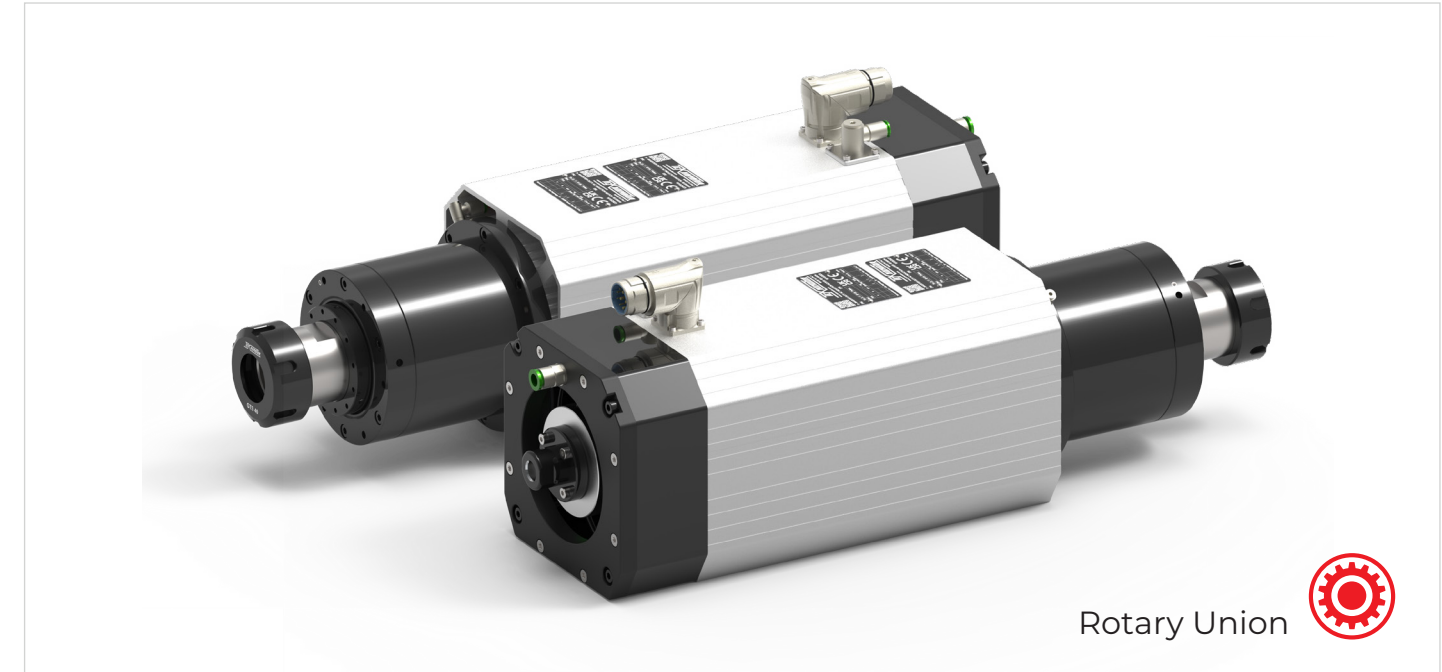
C071-C-2DB-P-ER40-AC-RU-RH



Rotary Union 

Power	5.5 kW / 6.6 kW	Tool holder	ER40
Torque	8.75 Nm / 10.50 Nm	Voltage	380 V
Base Speed	6000 rpm	Weight	26.50 Kg
Max Speed	24000 rpm	Order Code	COMC0710019

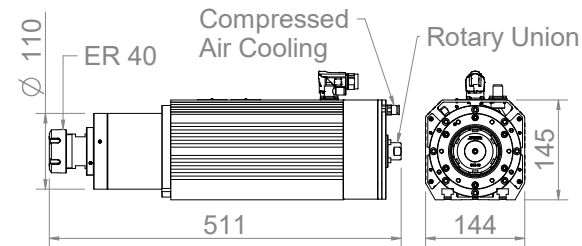
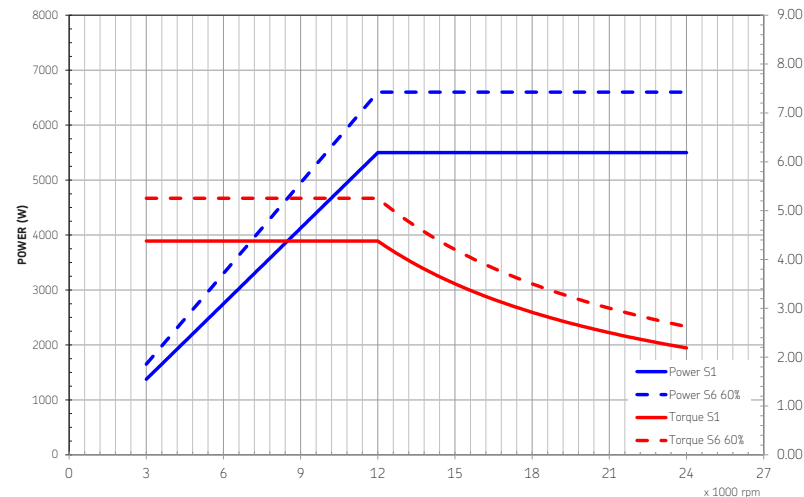
C071-C-2DB-P-ER40-AC-RU-RH



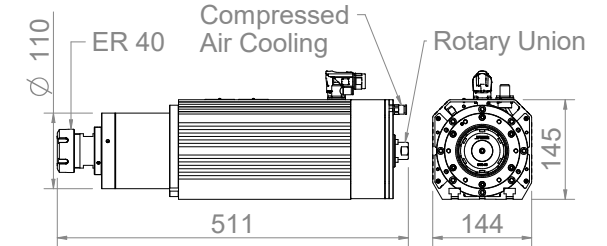
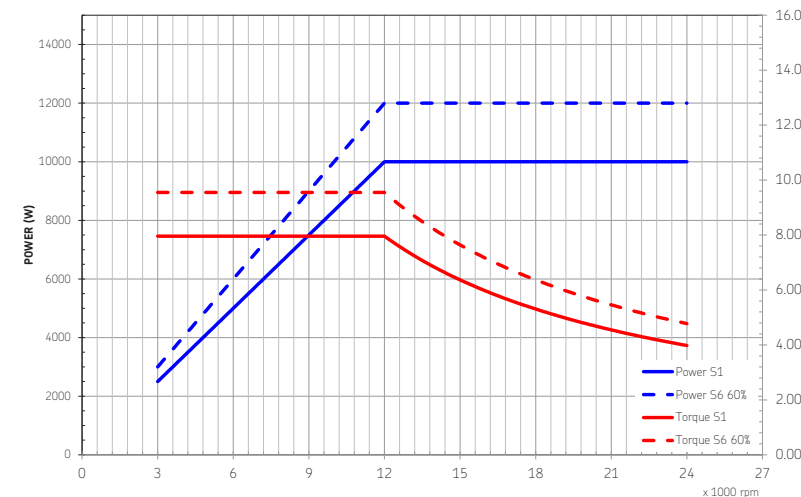
Rotary Union 

Power	10 kW / 12 kW	Tool holder	ER40
Torque	7.96 Nm / 9.55 Nm	Voltage	380 V
Base Speed	12000 rpm	Weight	26.52 Kg
Max Speed	24000 rpm	Order Code	COMC0710017

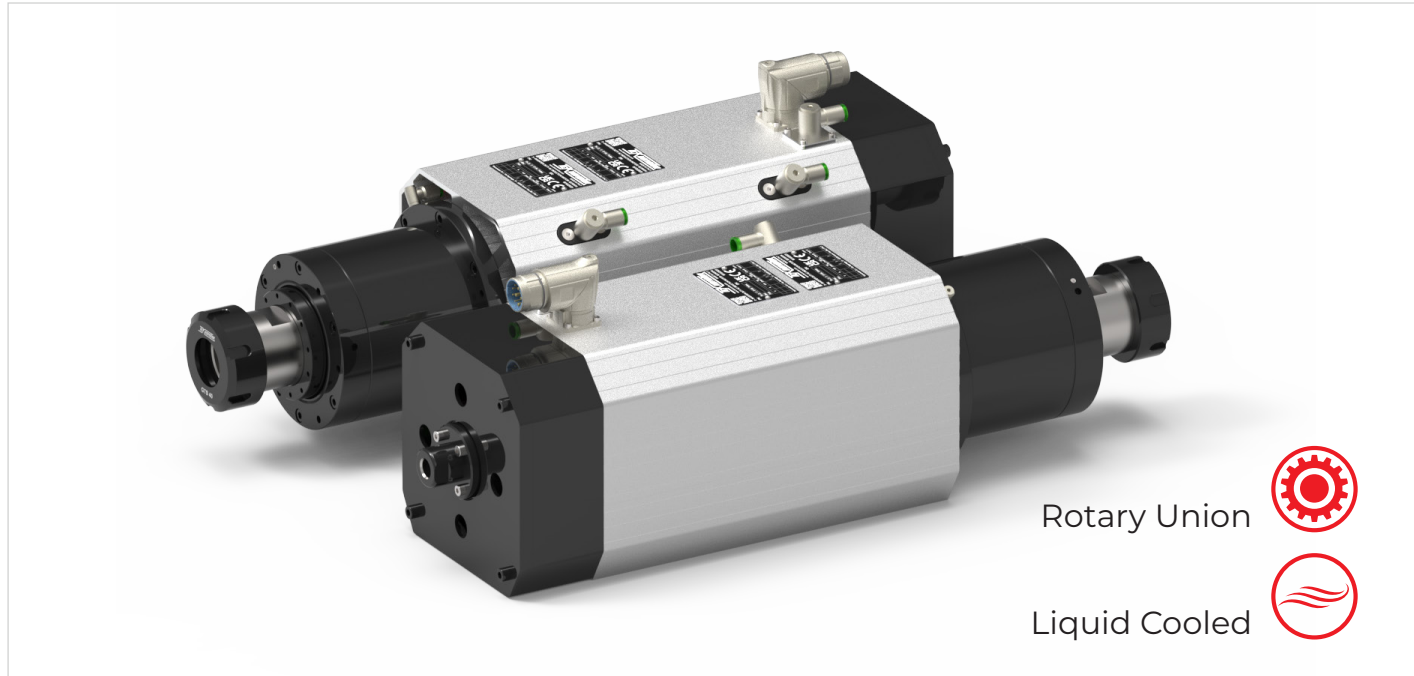
ATC71-C 4 POLES - TORQUE AND POWER CURVES



ATC71-C 4 POLES - TORQUE AND POWER CURVES



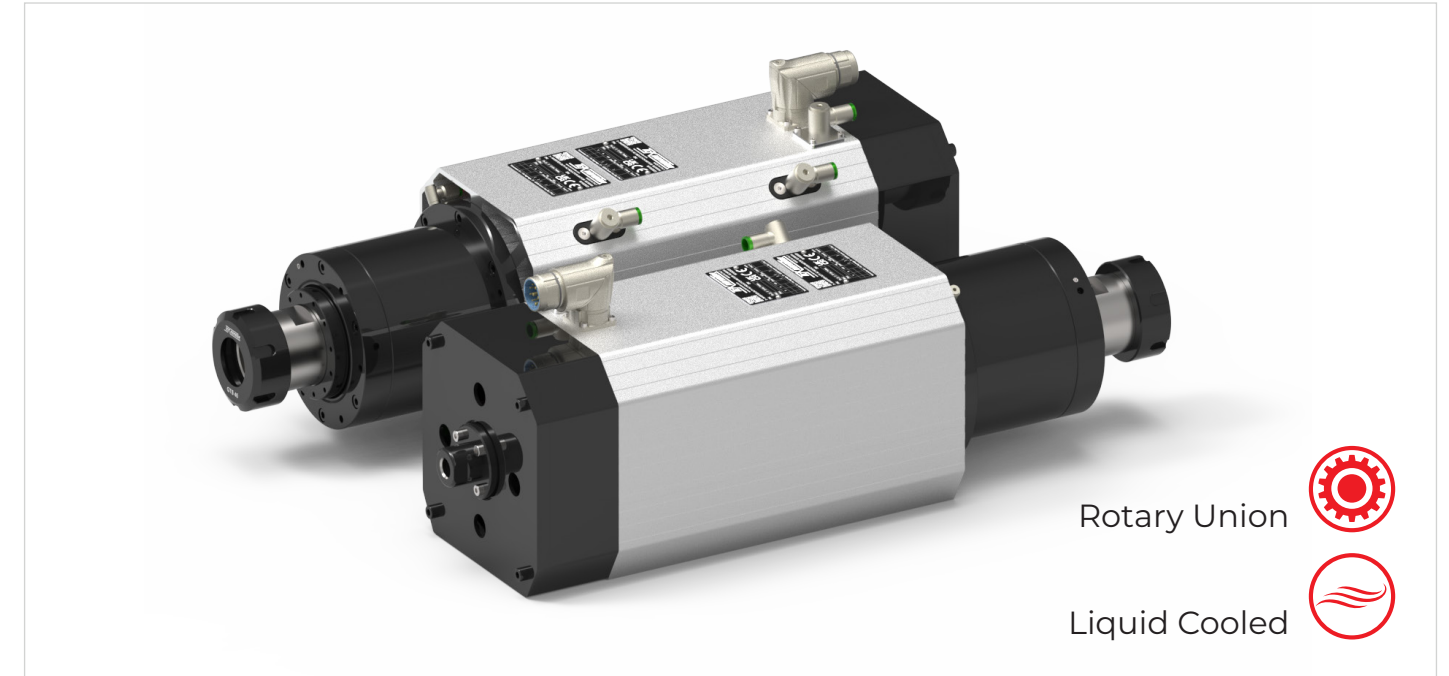
C071-C-2DB-P-ER40-LC-RU-RH



Rotary Union 
Liquid Cooled 

Power	5.5 kW / 6.6 kW	Tool holder	ER40
Torque	8.75 Nm / 10.50 Nm	Voltage	380 V
Base Speed	6000 rpm	Weight	26.84 Kg
Max Speed	24000 rpm	Order Code	COMC0710007

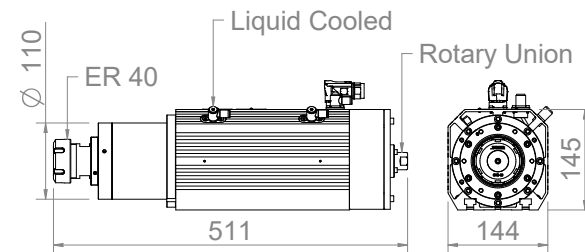
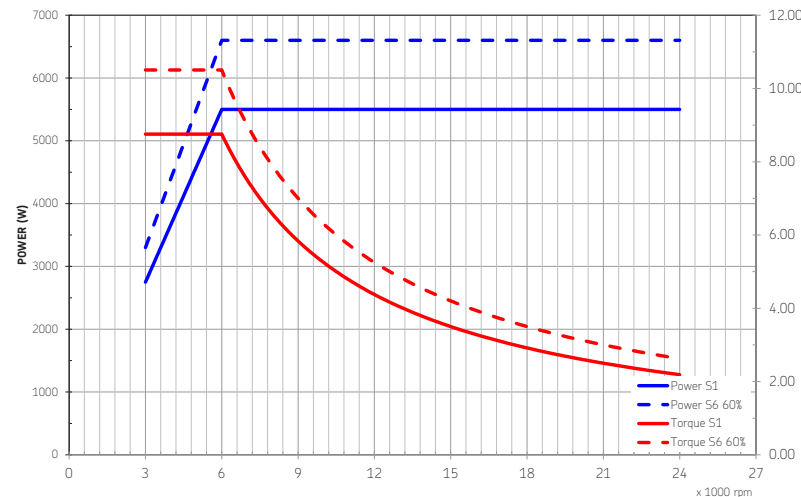
C071-C-2DB-P-ER40-LC-RU-RH



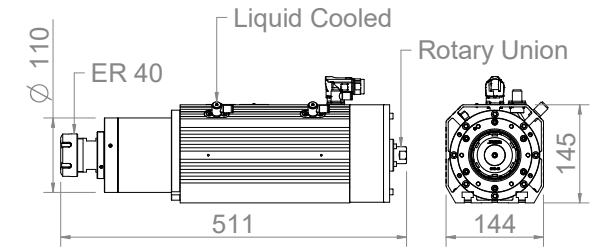
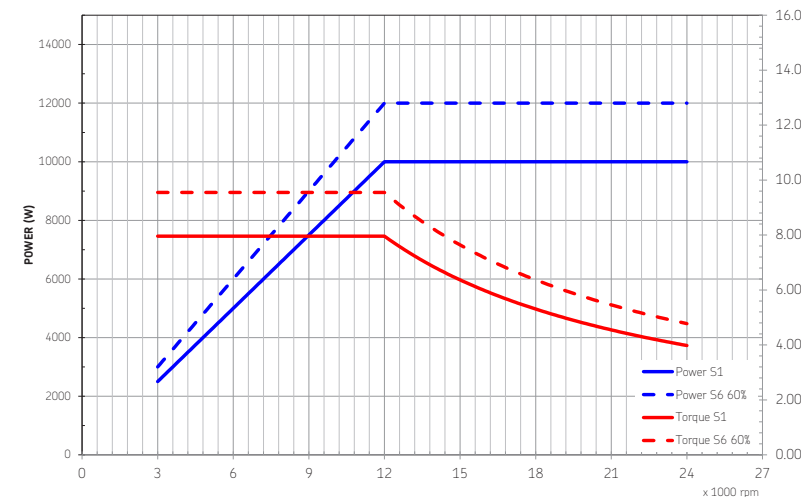
Rotary Union 
Liquid Cooled 

Power	10 kW / 12 kW	Tool holder	ER40
Torque	7.96 Nm / 9.55 Nm	Voltage	380 V
Base Speed	12000 rpm	Weight	26.84 Kg
Max Speed	24000 rpm	Order Code	COMC0710002

ATC71-C 4 POLES - TORQUE AND POWER CURVES



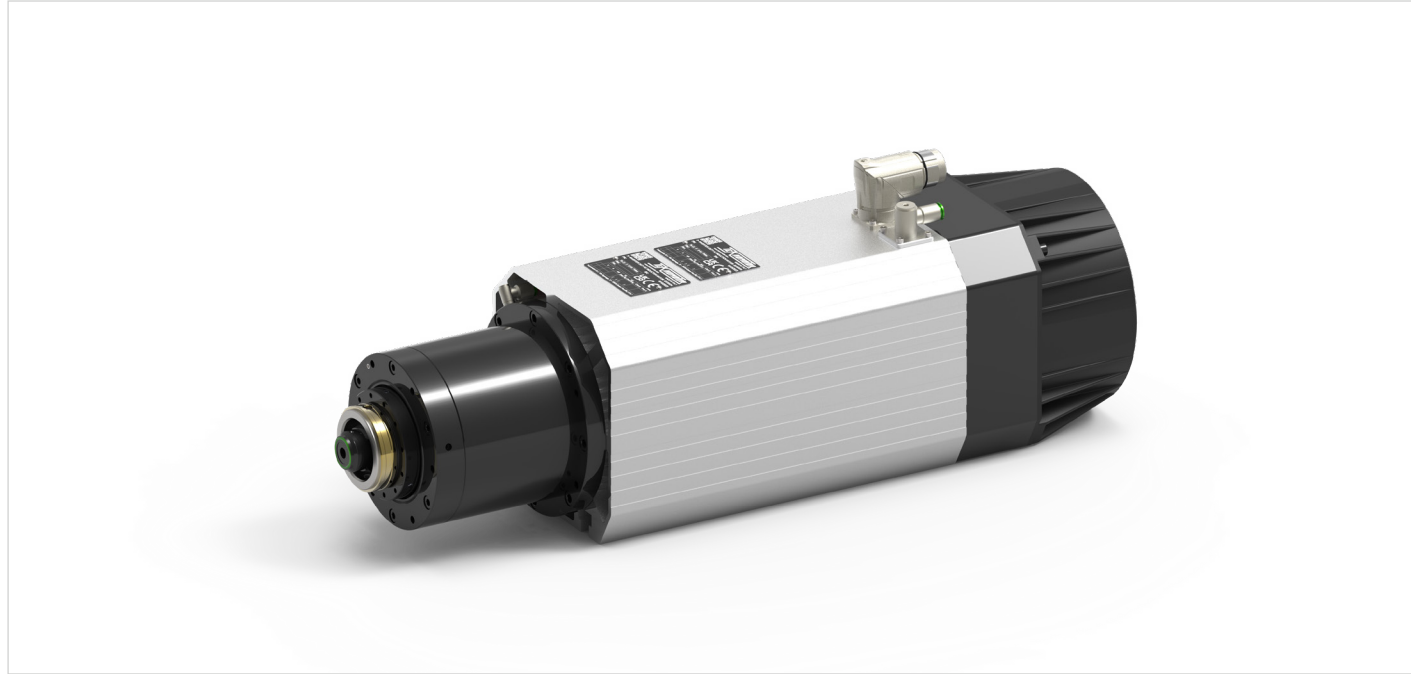
ATC71-C 4 POLES - TORQUE AND POWER CURVES



HSK50-C

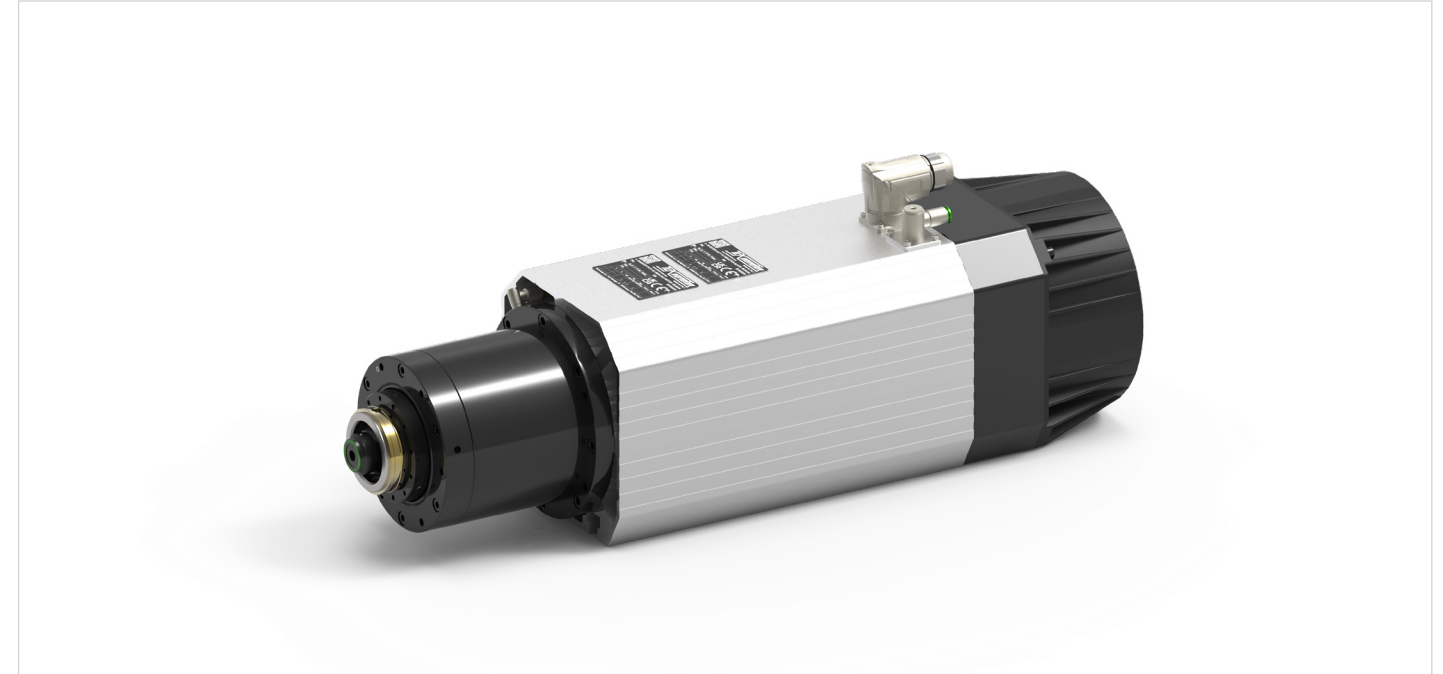
- The motor is highly robust and powerful, featuring pairs of ceramic bearings both at the front and rear ends.
- The impressive maximum speed of 24,000 rpm for an HSK50-C motor is something very exclusive.
- The case-hardened shaft and the thread produced by grinding guarantee extreme precision and long-lasting durability.
- Liquid cooling allows for precise temperature control, extending the motor's lifespan. Ideal for heavy-duty tasks or extended work cycles.
- The optional rotary joint allows air or coolant to pass through the shaft, optimizing tool performance in certain types of machining.
- Nose pressurization enables work in environments with coolant liquids or fine powders, such as carbon or epoxy materials.
- Optional pre-defined length cables are available to adapt to connectors.
- Tool changes are exceptionally rapid and maintain preset values.
- Installing this motor is much more cost-effective compared to a fully automatic motor since it doesn't require sensors, pistons, and computer systems to control the setup.
- The HSK attachment allows for the management of large and heavy tools, some weighing several kilograms (refer to tables for details).
- The HSK attachment is highly precise and repeatable.
- The HSK attachment accommodates various types of tool holders, including hydraulic and thermal chucks, further enhancing tool rotation precision for improved finishing quality of machined parts.

C071-C-2DB-HSKC50-SV



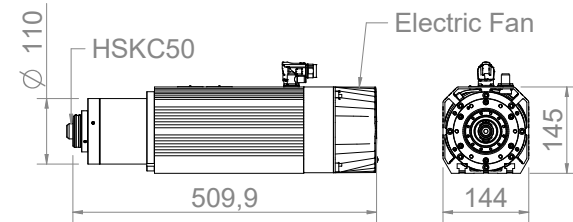
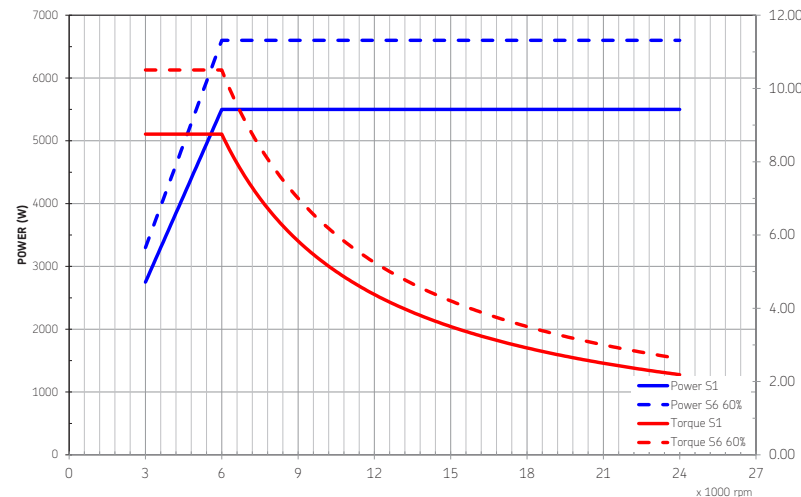
Power	5.5 kW / 6.6 kW	Tool holder	HSKC50
Torque	8.75 Nm / 10.50 Nm	Voltage	380 V
Base Speed	6000 rpm	Weight	26.75 Kg
Max Speed	24000 rpm	Order Code	COMC0710003

C071-C-2DB-HSKC50-SV

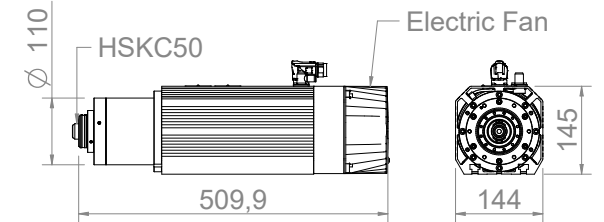
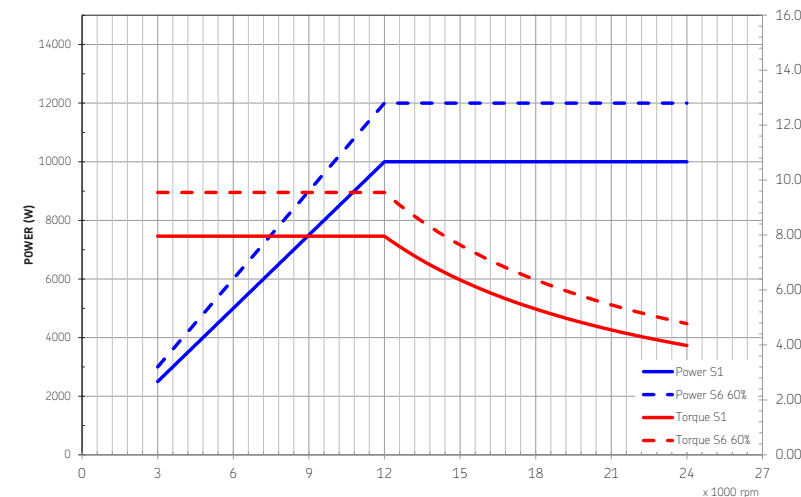


Power	10 kW / 12 kW	Tool holder	HSKC50
Torque	7.96 Nm / 9.55 Nm	Voltage	380 V
Base Speed	12000 rpm	Weight	26.77 Kg
Max Speed	24000 rpm	Order Code	COMC0710014

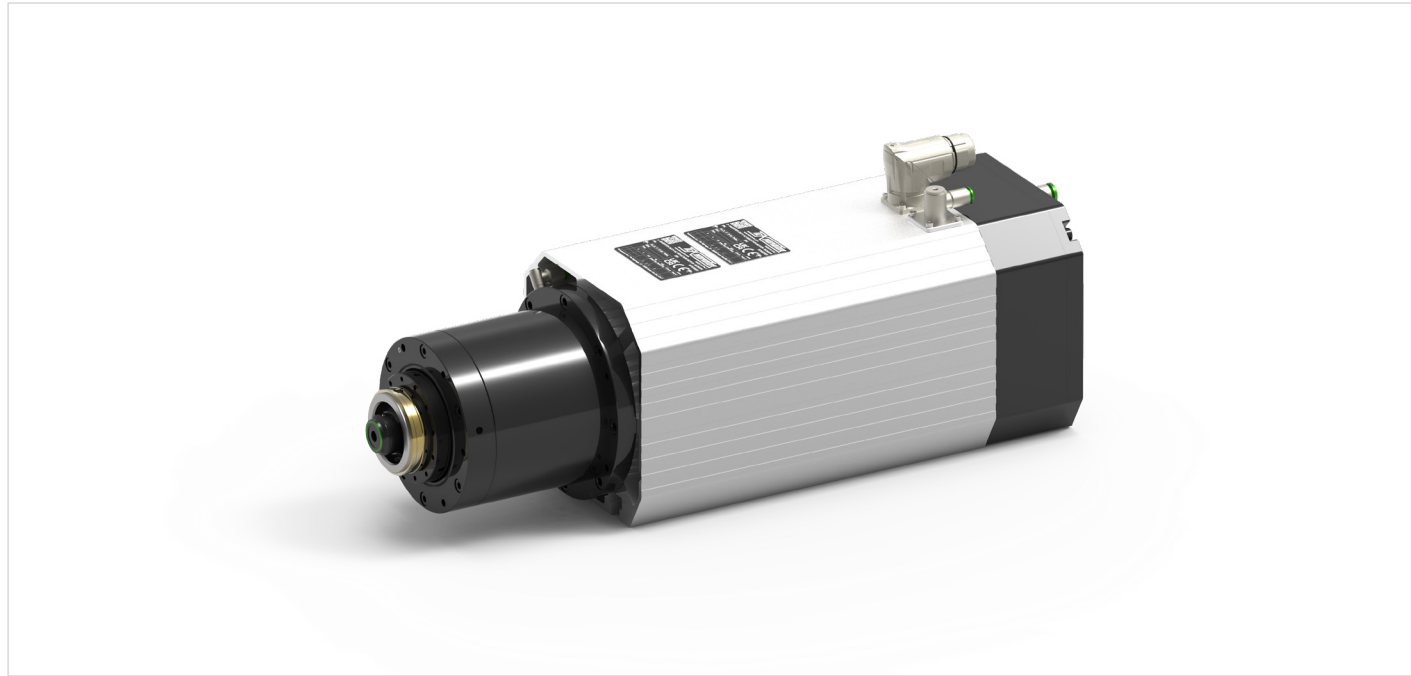
ATC71-C 4 POLES - TORQUE AND POWER CURVES



ATC71-C 4 POLES - TORQUE AND POWER CURVES

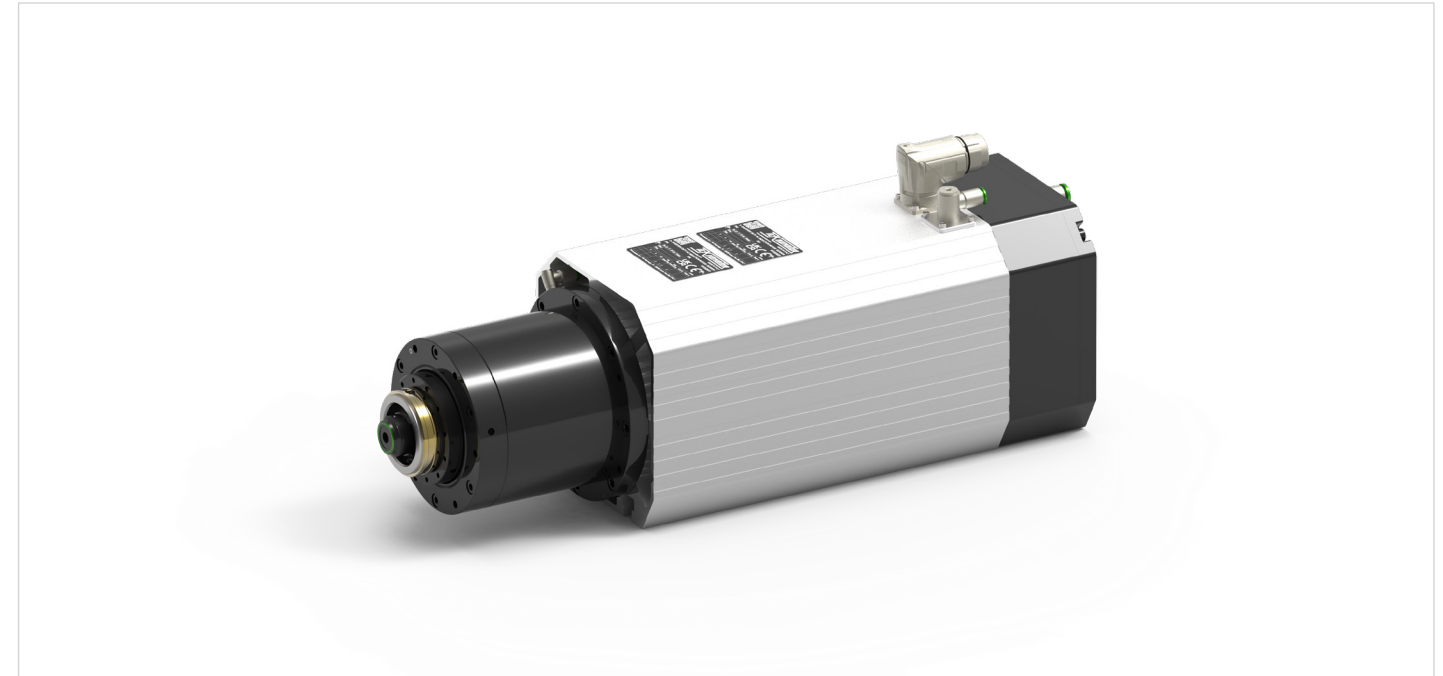


C071-C-2DB-HSKC50-AC



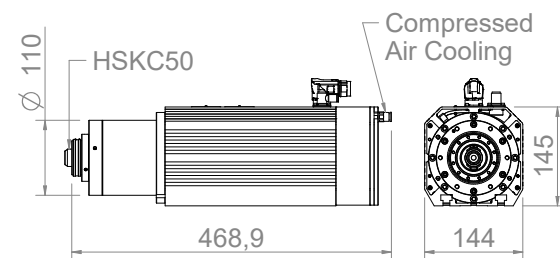
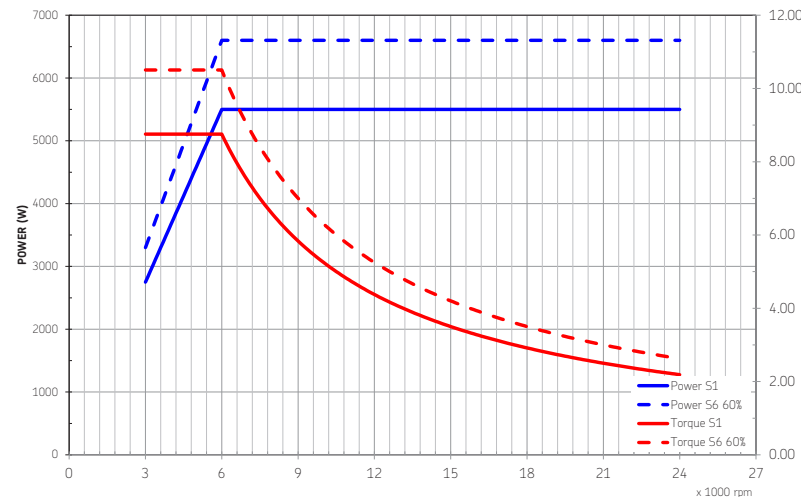
Power	5.5 kW / 6.6 kW	Tool holder	HSKC50
Torque	8.75 Nm / 10.50 Nm	Voltage	380 V
Base Speed	6000 rpm	Weight	25.92 Kg
Max Speed	24000 rpm	Order Code	COMC0710008

C071-C-2DB-HSKC50-AC

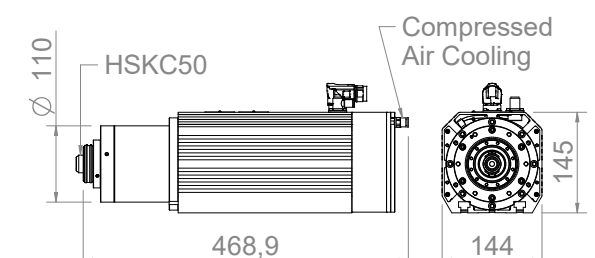
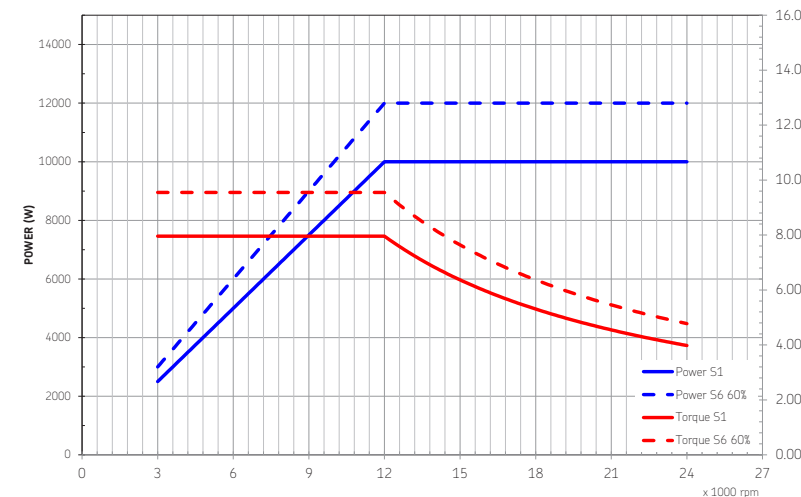


Power	10 kW / 12 kW	Tool holder	HSKC50
Torque	7.96 Nm / 9.55 Nm	Voltage	380 V
Base Speed	12000 rpm	Weight	25.95 Kg
Max Speed	24000 rpm	Order Code	COMC0710015

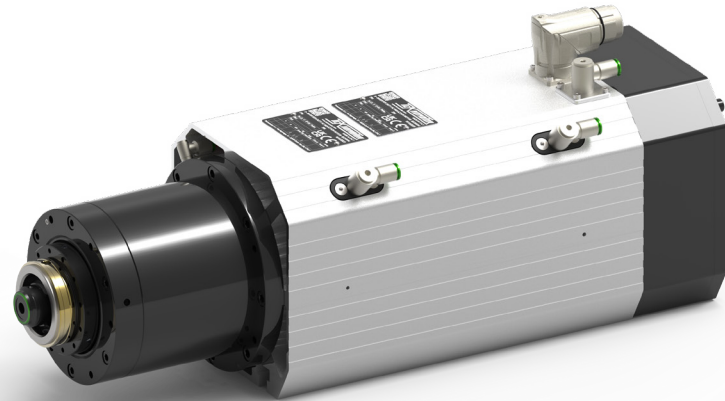
ATC71-C 4 POLES - TORQUE AND POWER CURVES



ATC71-C 4 POLES - TORQUE AND POWER CURVES



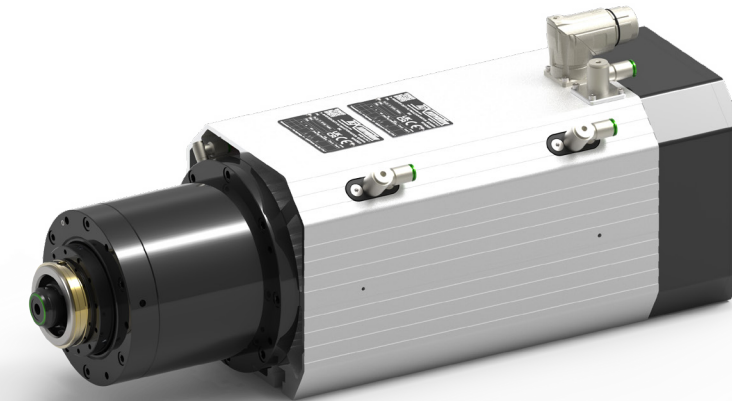
C071-C-2DB-HSKC50-LC



Liquid Cooled 

Power	5.5 kW / 6.6 kW	Tool holder	HSKC50
Torque	8.75 Nm / 10.50 Nm	Voltage	380 V
Base Speed	6000 rpm	Weight	26.47 Kg
Max Speed	24000 rpm	Order Code	COMC0710009

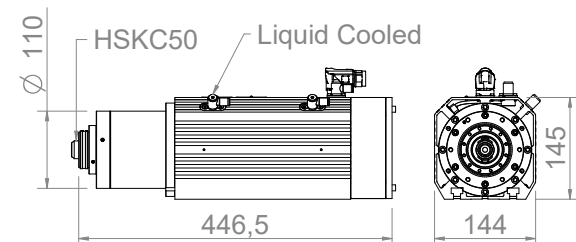
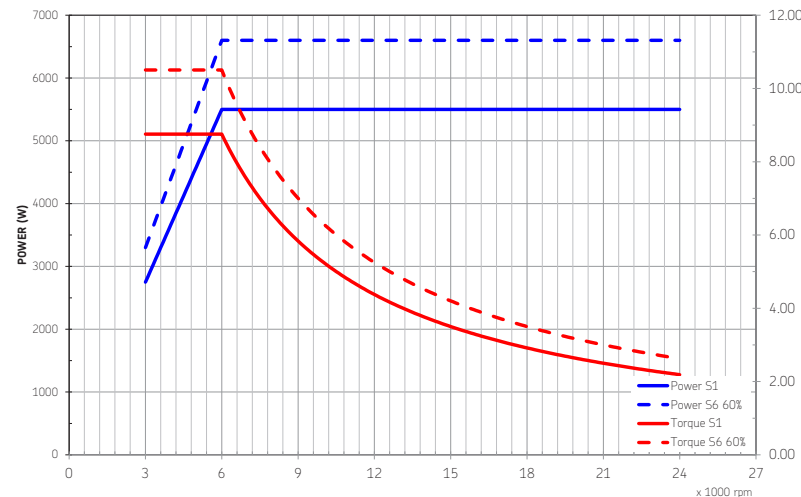
C071-C-2DB-HSKC50-LC



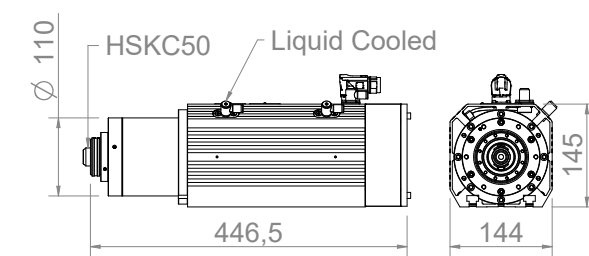
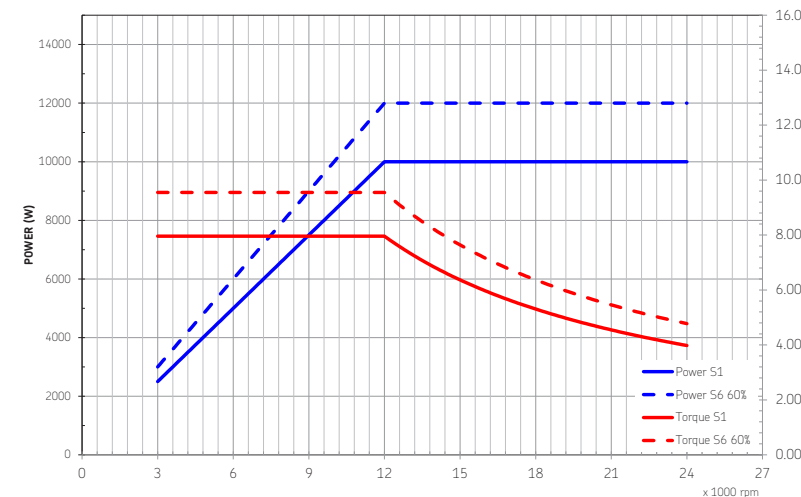
Liquid Cooled 

Power	10 kW / 12 kW	Tool holder	HSKC50
Torque	7.96 Nm / 9.55 Nm	Voltage	380 V
Base Speed	12000 rpm	Weight	26.47 Kg
Max Speed	24000 rpm	Order Code	COMC0710016

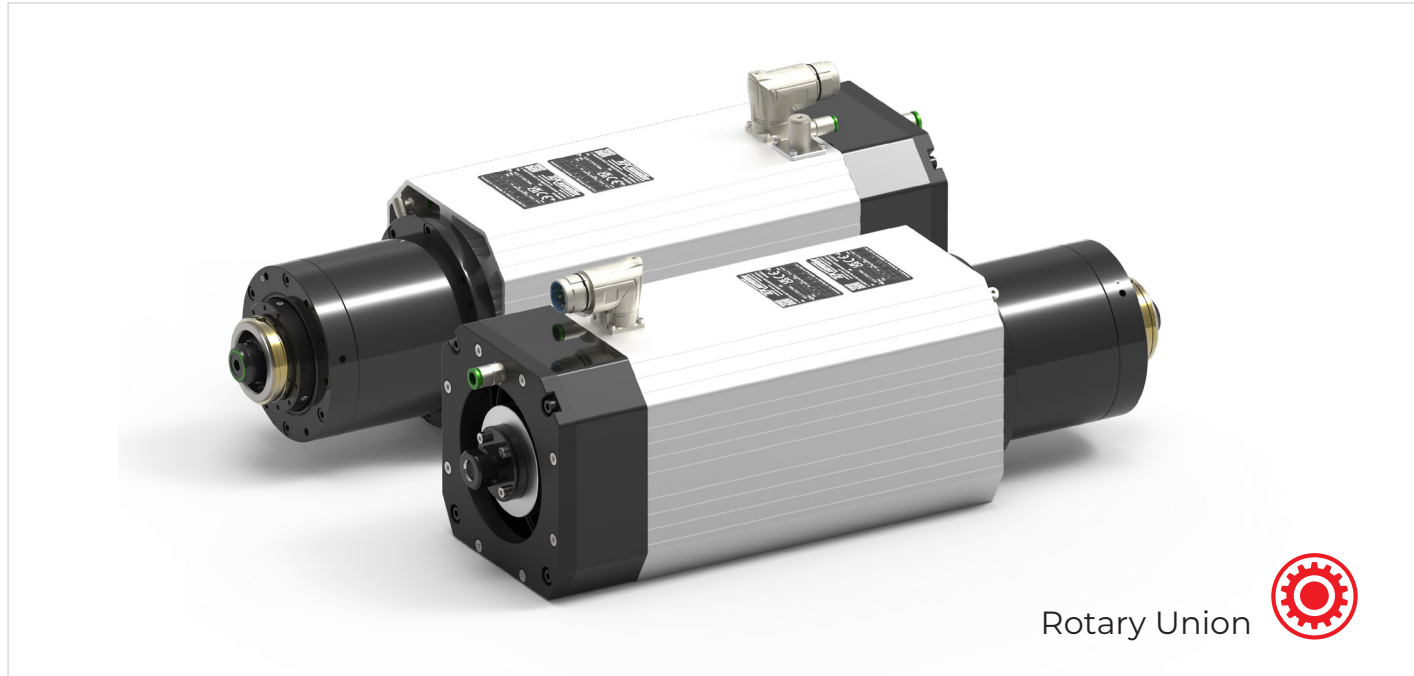
ATC71-C 4 POLES - TORQUE AND POWER CURVES



ATC71-C 4 POLES - TORQUE AND POWER CURVES



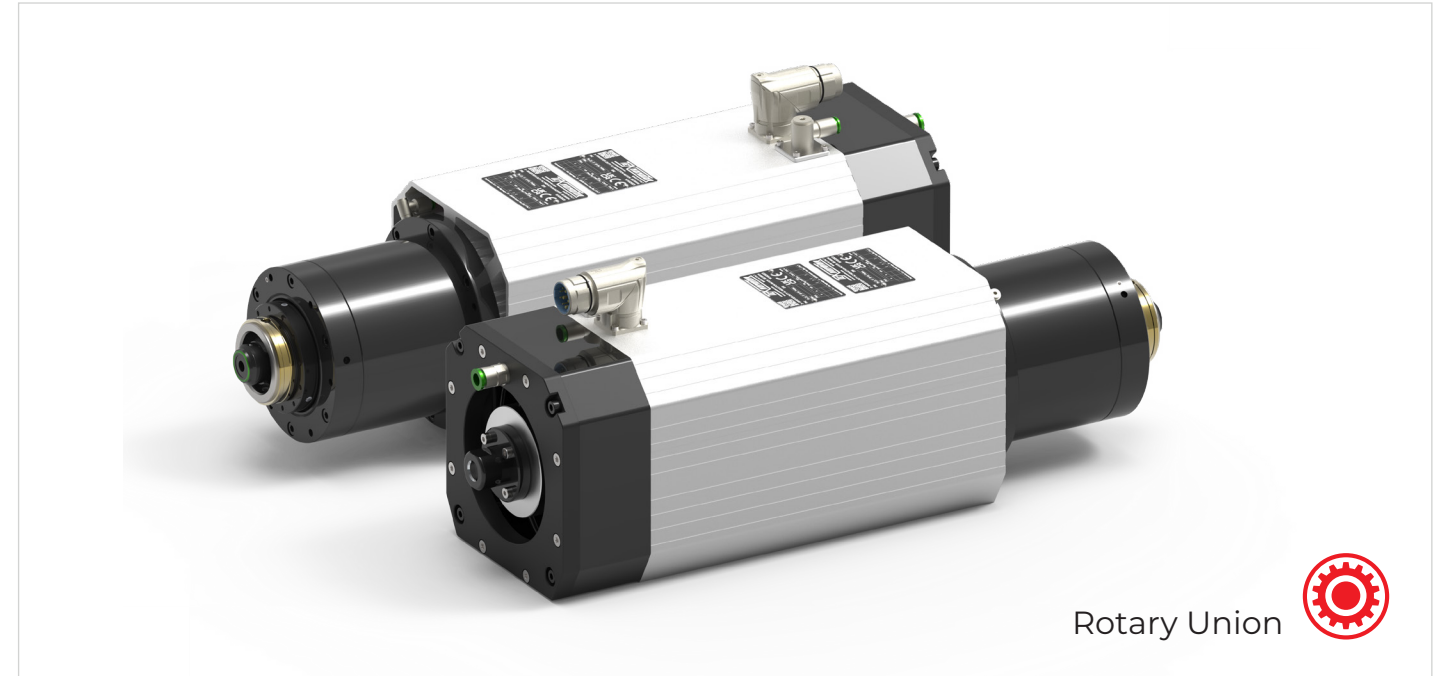
C071-C-2DB-HSKC50-AC-RU



Rotary Union 

Power	5.5 kW / 6.6 kW	Tool holder	HSKC50
Torque	8.75 Nm / 10.50 Nm	Voltage	380 V
Base Speed	6000 rpm	Weight	25.95 Kg
Max Speed	24000 rpm	Order Code	COMC0710020

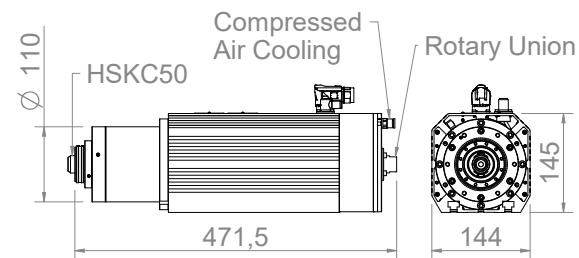
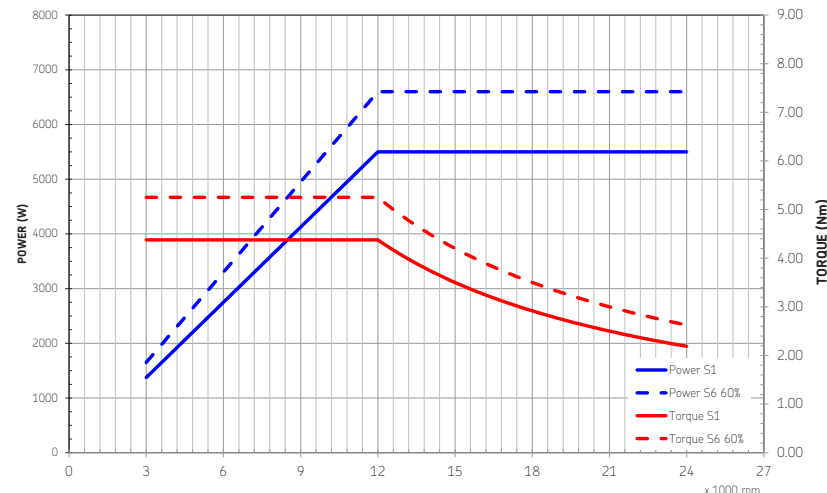
C071-C-2DB-HSKC50-AC-RU



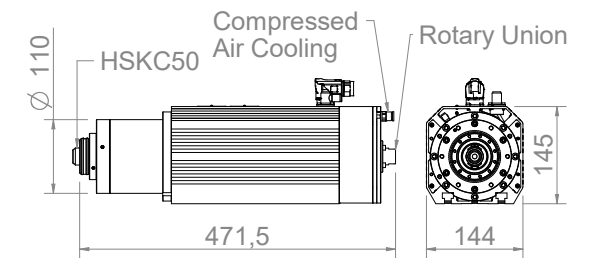
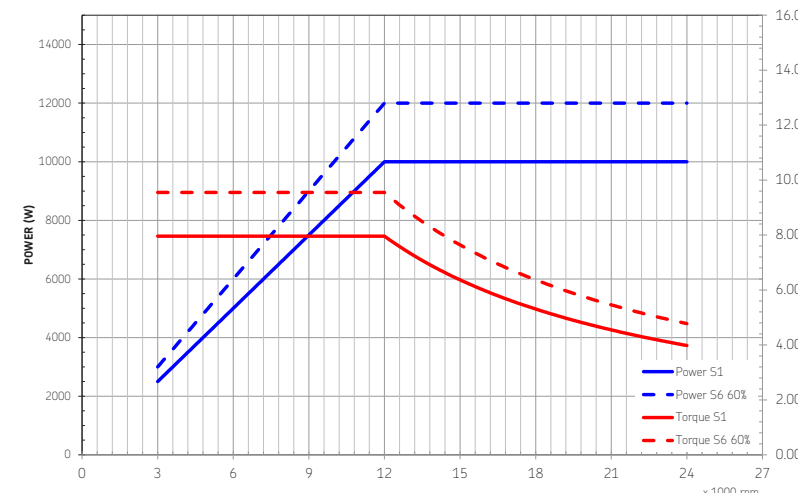
Rotary Union 

Power	10 kW / 12 kW	Tool holder	HSKC50
Torque	7.96 Nm / 9.55 Nm	Voltage	380 V
Base Speed	12000 rpm	Weight	25.98 Kg
Max Speed	24000 rpm	Order Code	COMC0710018

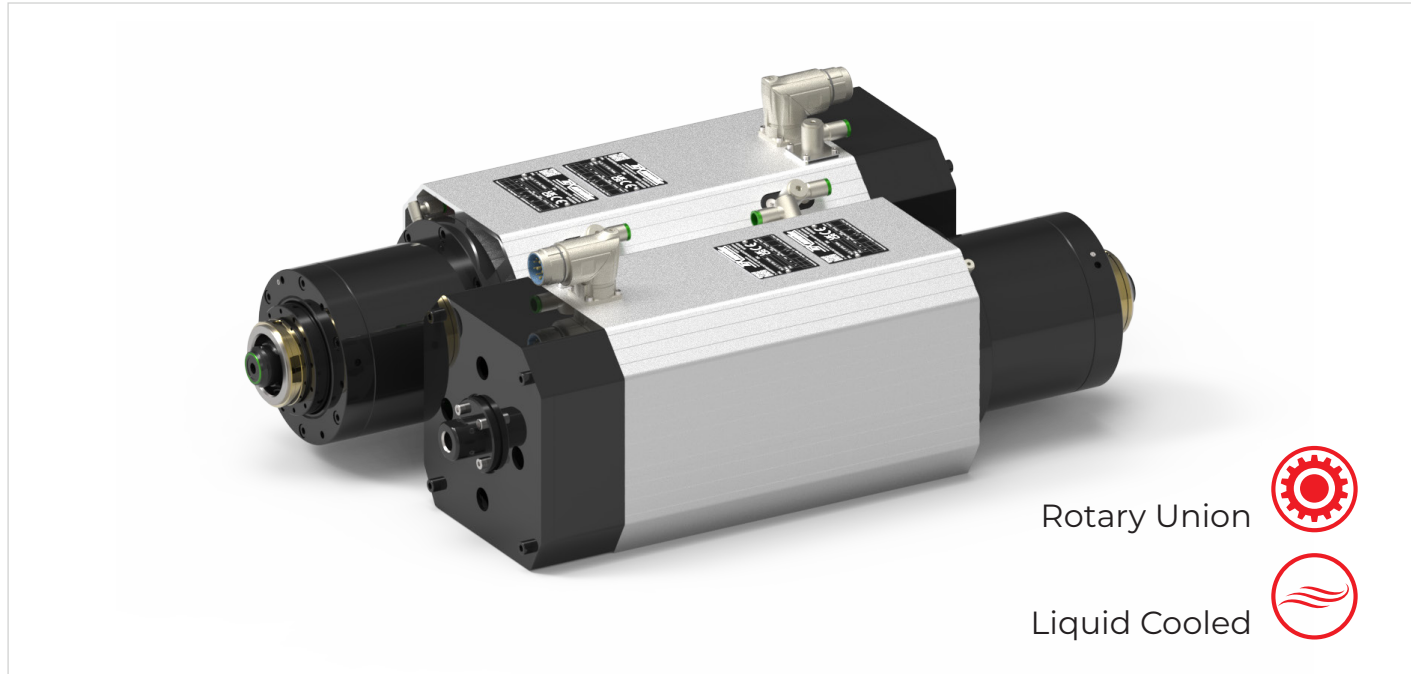
ATC71-C 4 POLES - TORQUE AND POWER CURVES



ATC71-C 4 POLES - TORQUE AND POWER CURVES

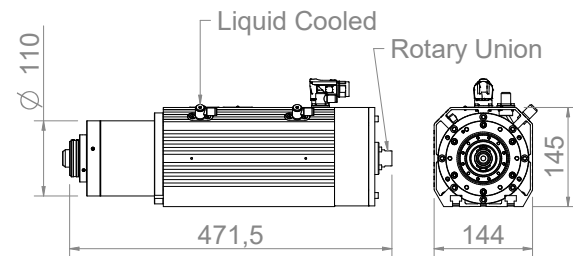
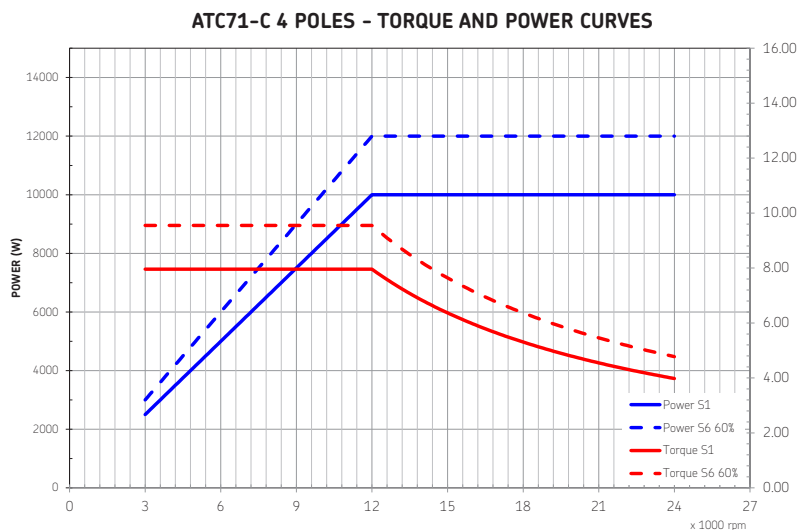


C071-C-2DB-HSKC50-LC-RU

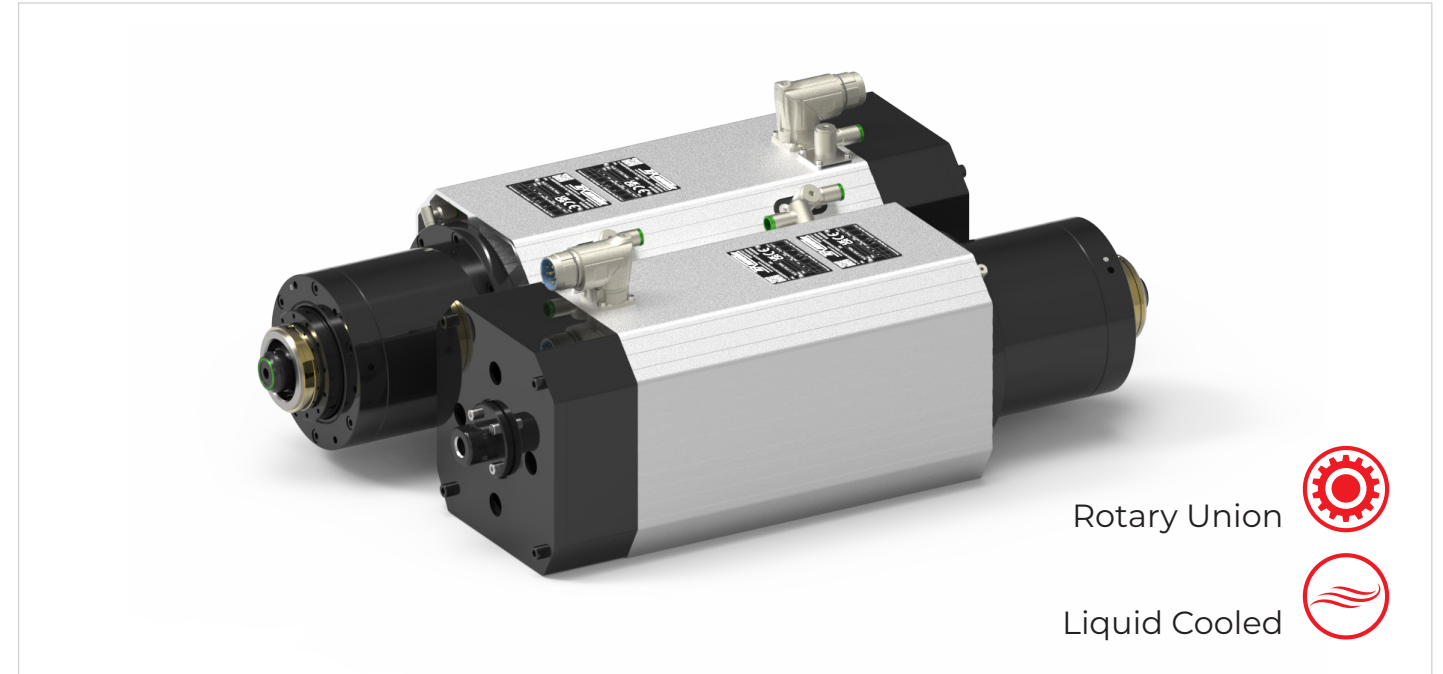


Rotary Union 
Liquid Cooled 

Power	10 kW / 12 kW	Tool holder	HSKC50
Torque	7.96 Nm / 9.55 Nm	Voltage	380 V
Base Speed	12000 rpm	Weight	26.30 Kg
Max Speed	24000 rpm	Order Code	COMC0710001

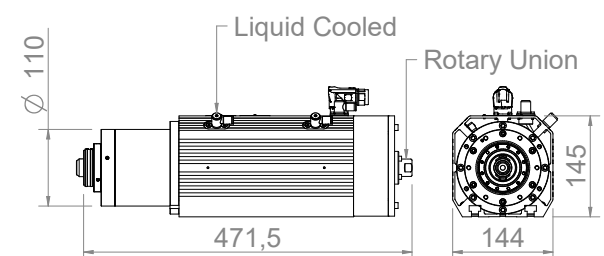
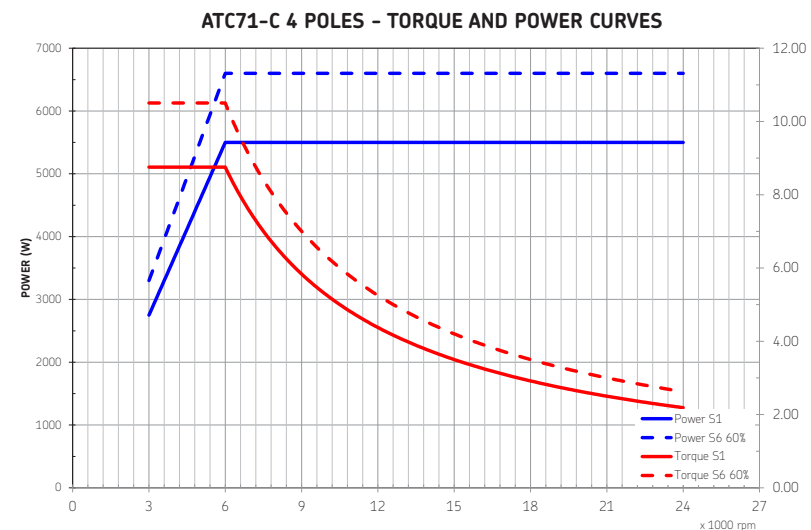


C071-C-2DB-HSKC50-LC-RU



Rotary Union 
Liquid Cooled 

Power	5.5 kW / 6.6 kW	Tool holder	HSKC50
Torque	8.75 Nm / 10.50 Nm	Voltage	380 V
Base Speed	6000 rpm	Weight	26.48 Kg
Max Speed	24000 rpm	Order Code	COMC0710010



Contact Us



This Catalog is an important step to involve you in the “Teknomotor Project” of which Partners and Customers are key components. Contact us; we will be at your side to develop projects, provide products, share values.



TEKNOMOTOR

TEKNOMOTOR srl
Via Argenega, 31
32038 Quero Vas - Setteville (BL), Italy
Tel: +39 0439 787950
www.teknomotor.com
info@teknomotor.com