

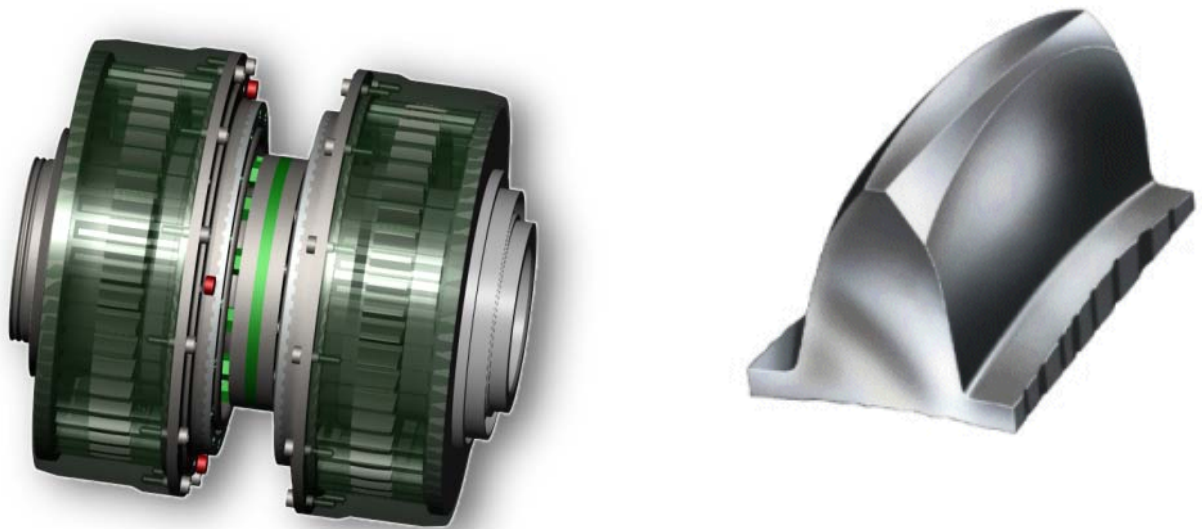
CMD on the Rail again...

Coupling CMD HMS 56000 ensures connection between the engine and the reducer under an engine. It transmits the torque while compensating for the angular, radial and axial variations.

TECHNICAL DATA OF COUPLING

Maximum speed:	3600 rpm
Over speed:	4320 rpm
Short circuit torque:	30 000 Nm
Basic rating of the coupling:	56 000 Nm
Possible maximum movement:	
Radial:	16.5
Axial:	+/- 35
Angular:	4°55'
Coupling weight:	95 Kg

It was the subject of a specific study, on the sealing, and the correction of face-hardened teeth.



Validation of the design on our test bench

