

KK130 Specifications

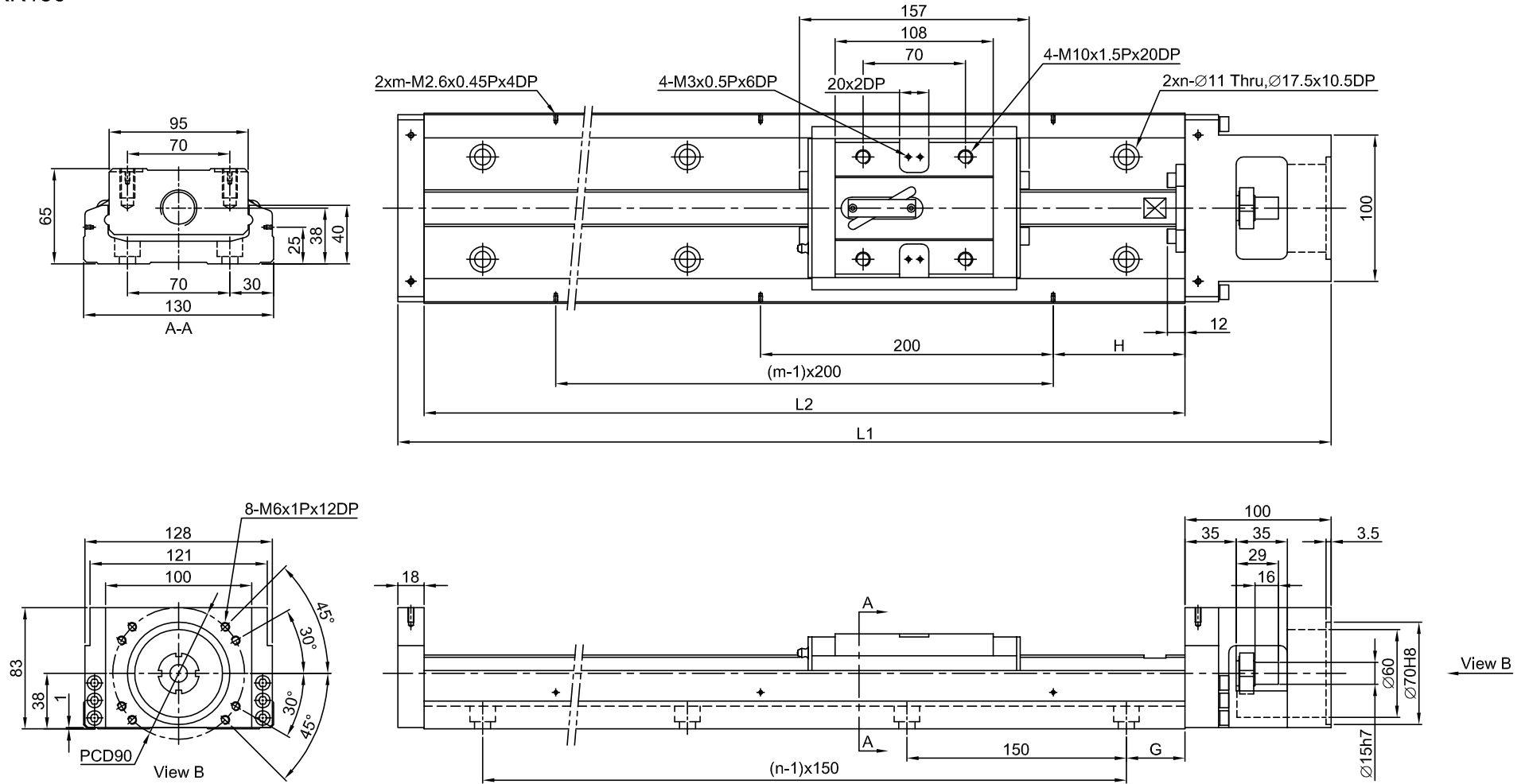
Specifications			
		KK13025	
		Precision	Normal
Ballscrew	Nominal (mm)	25	
	Lead (mm)	25	
	Basic Dynamic load (N)	7897	7092
	Basic Static Load (N)	15931	14352
Guideway	Basic Dynamic Load Rating (N)	Block A	48101
		Block S	-
	Basic Static Load Rating (N)	Block A	84829
		Block S	-
	Allowable Static Moment MP (pitching)(N-m)	Block A1	1536
		Block A2	7350
		Block S1	-
		Block S2	-
	Allowable Static Moment MY (yawing)(N-m)	Block A1	1536
		Block A2	7350
		Block S1	-
		Block S2	-
Allowable Static Moment MR (rolling)(N-m)	Block A1	3885	
	Block A2	7770	
	Block S1	-	
	Block S2	-	

Accuracy Grade									
	Rail Length	Repeatability		Accuracy		Running Parallelism		Starting Torque (N-cm)	
		Precision	Normal	Precision	Normal	Precision	Normal	Precision	Normal
KK130	980	±0.005	±0.01	0.035	-	0.025	-	25	15
	1180			0.04		0.03		25	15
	1380	-	±0.012	-	-	-	-	27	18
	1680								

Maximum Speed Limit				
Model	Ballscrew Lead(mm)	Rail Length (mm)	Speed (mm/sec)	
			Precision	Normal
KK130	25	980	1120	800
		1180	1120	800
		1380	830	800
		1680	550	550

Dimensions

Without Cover
KK130



Rail Length L2 (mm)	Total Length L1 (mm)	Maximum Stroke(mm)		G (mm)	H (mm)	n	m	Mass(kg)	
		A1 Block	A2 Block					A1 Block	A2 Block
980	1098	811	659	40	90	7	5	-	-
1180	1298	1011	859	65	90	8	6	-	-
1380	1498	1211	1059	90	90	9	7	-	-
1680	1798	1511	1359	90	40	11	9	-	-