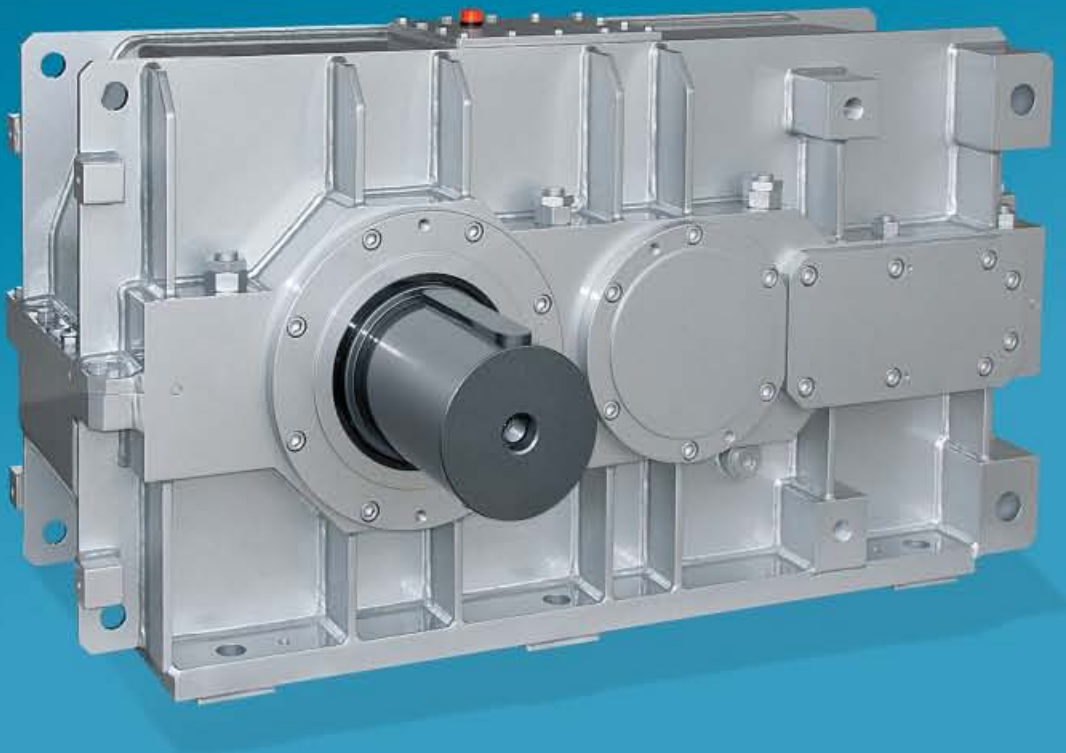


 **Bonfiglioli**  
Riduttori

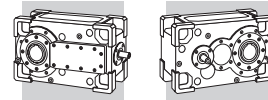
---

**HDP 170 - 180**

**HDO 170 - 180**








## SOMMARIO

## SUMMARY

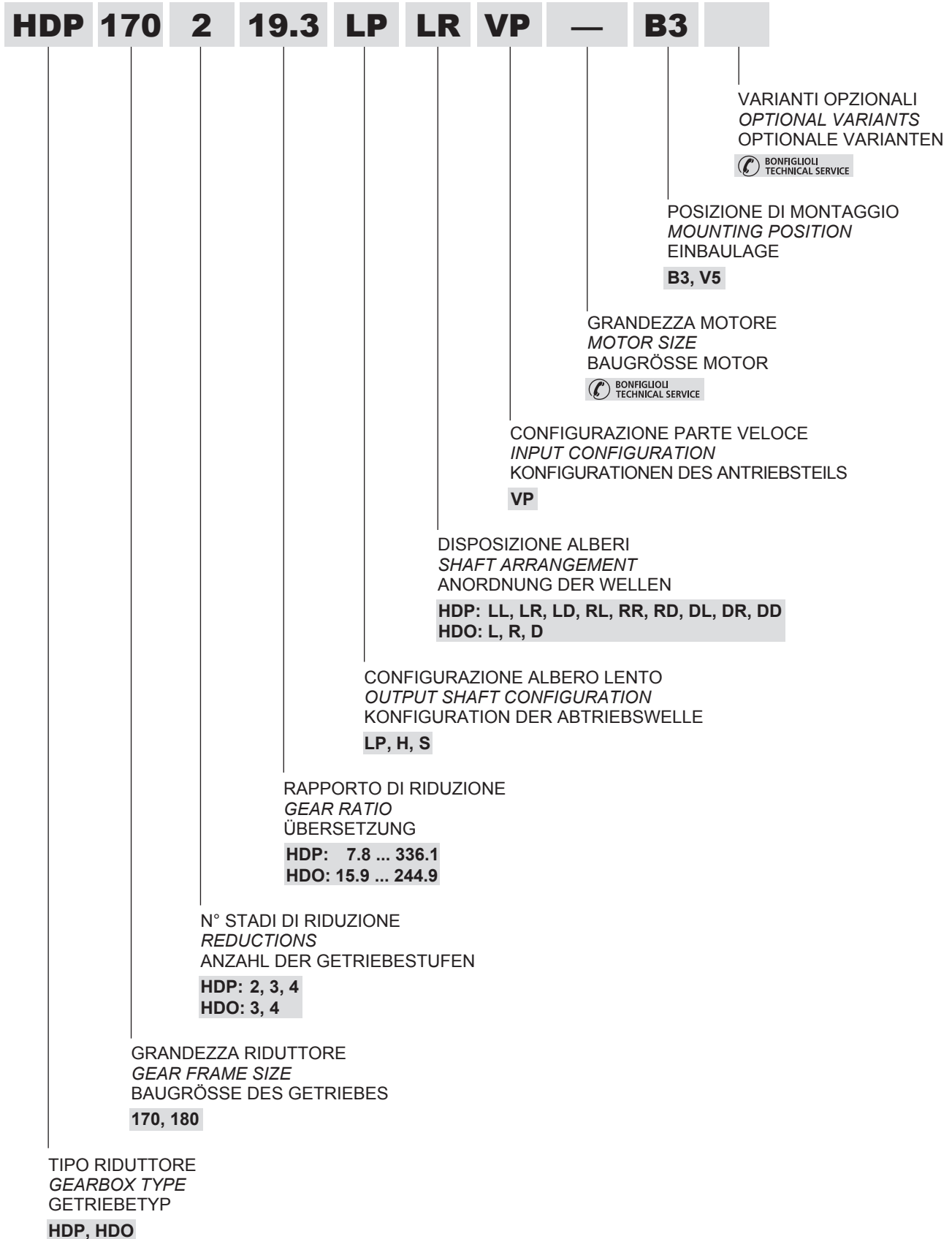
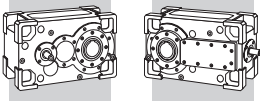
## ZUSAMMENFASSUNG

Paragrafo Chapter Abschnitt	Descrizione	Description	Beschreibung	
1	CONFIGURAZIONE PRODOTTO	<i>PRODUCT CONFIGURATIONS</i>	PRODUKTKONFIGURATIONEN	2
2	COPPIA MASSIMA TRASMISSIBILE	<i>MAXIMUM TRANSMISSIBLE TORQUE</i>	ÜBERSETZBARES MAXIMALES DREHMOMENT	3
3	POTENZA TERMICA E DATI TECNICI	<i>THERMAL CAPACITY AND RATING CHARTS</i>	WARMELEISTUNG UND AUSWAHLTABELLEN	3
4	DIMENSIONI E PESI	<i>DIMENSIONS AND WEIGHT</i>	ABMESSUNGEN UND GEWICHTE	8

Revisioni  
L'indice di revisione del catalogo è riportato a pag. 20. Nel sito [www.bonfiglioli.com](http://www.bonfiglioli.com) sono disponibili i cataloghi con le revisioni aggiornate.

Revisions  
Refer to page 20 for the catalogue revision index. Visit [www.bonfiglioli.com](http://www.bonfiglioli.com) to search for catalogues with up-to-date revisions.

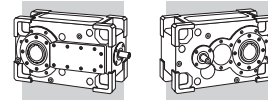
Änderungen  
Das Revisionsverzeichnis des Katalogs wird auf Seite 20 wiedergegeben. Auf unserer Website [www.bonfiglioli.com](http://www.bonfiglioli.com) werden die Kataloge in ihrer letzten, überarbeiteten Version angeboten.



NOTA: La selezione combinata di alcune varianti può comportare conflitti di natura tecnica o dimensionale. Consultare la fabbrica per una verifica puntuale.

REMARK: The multiple selection of some of the variants may be subject to technical or dimensional constraints. Consult with the factory to have your selection approved.

HINWEIS: Die Kombination einiger Varianten kann Konflikte technischer oder dimensionaler Art verursachen. Für eine spezifische Überprüfung bitte Rücksprache mit dem Werk halten.



## 2 - COPPIA MASSIMA TRASMISSIBILE




I momenti torcenti riportati in tabella possono subire delle limitazioni in funzione del componente più sollecitato alle diverse velocità di rotazione (vedere capitolo "Potenza termica e dati tecnici").



## 2 - MAXIMUM TRANSMISSIBLE TORQUE

The torque values given in the table may be reduced depending on what component is most stressed at the various rotation speeds (see the "Thermal Capacities and Technical Specifications" section).

## 2 - ÜBERSETZBARES MAXIMALES DREHMOMENT

Für die in der Tabelle aufgeführten Torsionsmomente sind Begrenzungen nicht auszuschließen; dies ist von der höheren Belastung der Komponente bei den verschiedenen Drehzahlen abhängig (siehe Kapitel "Wärmeleistung und technische Daten").

HDP			
	i <sub>N</sub>	Mn <sub>2max</sub> [Nm]	
		HDP 170	HDP 180
2x 	8.0	147450	—
	9.0	159950	163800
	10.0	165750	182200
	11.2	167200	190150
	12.5	172900	185800
	14.0	165750	183650
	16.0	159900	190150
	18.0	172900	177650
	20.0	165750	184050
	22.4	—	190150
3x 	22.4	167200	—
	25.0	172900	185800
	28.0	165750	184050
	31.5	176350	186800
	35.5	172900	194050
	40.0	165750	184050
	45.0	167200	188200
	50.0	172900	185800
	56.0	165750	184050
	63.0	176350	186800
4x 	71.0	172900	194050
	80.0	165750	184050
	90.0	—	188200
	90.0	167200	—
	100.0	172900	185800
	112.0	165750	184050
	125.0	176350	186800
	140.0	172900	194050
	160.0	165750	184050
	180.0	167200	188200

HDO			
	i <sub>N</sub>	Mn <sub>2max</sub> [Nm]	
		HDO 170	HDO 180
3x 	16.0	163600	—
	18.0	172900	181750
	20.0	165750	184050
	22.4	176350	186800
	25.0	172900	194050
	28.0	165750	184050
	31.5	176350	186800
	35.5	172900	194050
	40.0	172900	184050
	45.0	165750	188200
	50.0	176350	186800
	56.0	172900	194050
	63.0	165750	184050
	71.0	—	188200
	4x 	71.0	167000
80.0		172900	185550
90.0		165750	184050
100.0		176350	186800
112.0		172900	194050
125.0		165750	184050
140.0		167000	188200
160.0		172900	185550
180.0		165750	184050
200.0		176350	186800

## 3 - POTENZA TERMICA E DATI TECNICI

La potenza termica P<sub>T</sub> è il valore massimo di potenza che può essere trasmessa meccanicamente dal riduttore, in funzionamento continuo, senza che si produca al suo interno un aumento di temperatura tale da provocare il danneggiamento degli organi principali.

Nelle seguenti condizioni operative:

- posizione di montaggio B3
  - funzionamento continuo
  - installazione in ampi spazi (velocità aria > 1.4 m/s)
  - altitudine max 1000 m
- la potenza termica complessiva P<sub>T</sub> e la po-

## 3 - THERMAL CAPACITY AND RATING CHARTS

Thermal power P<sub>T</sub> is the maximum power that the gearbox can transmit mechanically, under continuous operation, without the internal temperature rising to a value that could damage the gearbox components.

Under the following operating conditions:

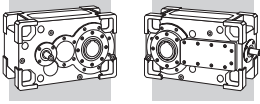
- mounting position B3
  - continuous functioning
  - installation in large areas (air speed > 1.4 m/s)
  - max. installation altitude 1000 m
- total thermal power P<sub>T</sub> and thermal capac-

## 3 - WARMELEISTUNG UND AUSWAHLTABELLEN

Die Wärmeleistung P<sub>T</sub> ist der maximale Leistungswert, der bei Dauerbetrieb mechanisch vom Getriebe übertragen werden kann, ohne dass im Innenbereich des Getriebes ein Temperaturanstieg zu verzeichnen wäre, der die Schädigung der wesentlichen Teile verursachen würde.

Unter folgenden Betriebsbedingungen:


- Einbaulage B3
  - Dauerbetrieb
  - Installation in großen Räumen (Luftgeschwindigkeit > 1.4 m/s)
  - max. 1000 m ü NN
- entspricht die Gesamt-Wärmeleistung P<sub>T</sub> und



tenza termica comprensiva del contributo fornito dalla ventilazione forzata  $P_{TFAN}$  è riportata nelle seguenti tabelle. Per condizioni diverse contattare il Servizio Tecnico Bonfiglioli.

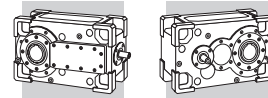
ity with the contribution of forced ventilation  $P_{TFAN}$  is given in the following tables. For other conditions contact Bonfiglioli's Technical Service.

Wärmeleistung einschließlich des Beitrags durch die Zwangsbelüftung an  $P_{TFAN}$  den in den folgenden Tabellen aufgeführten Werten. Für andere Bedingungen Kontakt technischen Kundendienst von Bonfiglioli Riduttori.

HDP 170					$n_1 = 1400 \text{ rpm}$			
	i	$n_2$ [rpm]	$Mn_2$ [Nm]	$Pn_1$ [kW]	$T_{amb} = 20^\circ\text{C}$		$T_{amb} = 40^\circ\text{C}$	
					$P_T$ [kW]	$P_{TFAN}$ [kW]	$P_T$ [kW]	$P_{TFAN}$ [kW]
HDP 170 2	7.8	179	122800	2393	*	*	*	*
HDP 170 2	9.1	154	129050	2166	*	*	*	*
HDP 170 2	9.8	142	131900	2044	*	*	*	*
HDP 170 2	11.3	124	132750	1797	*	*	*	*
HDP 170 2	13.1	107	146500	1708	*	544	*	*
HDP 170 2	14.2	99	150000	1615	*	544	*	*
HDP 170 2	15.4	91	144600	1437	*	544	*	400
HDP 170 2	17.8	79	151850	1300	*	544	*	400
HDP 170 2	19.3	72	155500	1229	*	544	*	400
HDP 170 3	23.2	60	139150	935	*	390	*	*
HDP 170 3	26.9	52	161550	935	*	390	*	*
HDP 170 3	29.1	48	165750	886	225	390	*	*
HDP 170 3	31.6	44	163050	804	225	390	*	*
HDP 170 3	36.7	38	172900	735	225	390	*	*
HDP 170 3	39.7	35	165750	650	225	390	*	*
HDP 170 3	45.1	31	167200	577	225	390	193	318
HDP 170 3	52.4	26.7	172900	514	225	390	193	318
HDP 170 3	56.7	24.7	165750	455	225	390	193	318
HDP 170 3	61.4	22.8	174600	443	225	390	193	318
HDP 170 3	71.3	19.6	172900	378	225	—	193	318
HDP 170 3	77.2	18.1	165750	334	225	—	193	318
HDP 170 4	92.7	15.1	167200	287	174	—	103	198
HDP 170 4	107.6	13.0	172900	255	174	—	103	198
HDP 170 4	116.6	12.0	165750	226	174	—	103	198
HDP 170 4	126.3	11.1	176350	222	174	—	103	198
HDP 170 4	146.6	9.5	172900	187	174	—	103	—
HDP 170 4	158.8	8.8	165750	166	—	—	103	—
HDP 170 4	177.4	7.9	167200	150	—	—	103	—
HDP 170 4	206.0	6.8	172900	133	—	—	103	—
HDP 170 4	223.1	6.3	165750	118	—	—	103	—
HDP 170 4	241.7	5.8	176350	116	—	—	103	—
HDP 170 4	280.5	5.0	172900	98	—	—	—	—
HDP 170 4	303.8	4.6	165750	87	—	—	—	—


\*  BONFIGLIOLI  
TECHNICAL SERVICE

— Verifica termica non necessaria / Thermal verification not necessary / Wärmeprüfung nicht erforderlich



# HDP 180

$n_1 = 1400 \text{ rpm}$

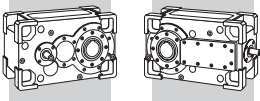
	i	n <sub>2</sub> [rpm]	Mn <sub>2</sub> [Nm]	Pn <sub>1</sub> [kW]	T <sub>amb</sub> = 20°C		T <sub>amb</sub> = 40°C	
					P <sub>T</sub> [kW]	P <sub>TFAN</sub> [kW]	P <sub>T</sub> [kW]	P <sub>TFAN</sub> [kW]
HDP 180 2	8.7	161	136450	2393	*	*	*	*
HDP 180 2	10.1	139	143000	2167	*	*	*	*
HDP 180 2	10.9	129	145950	2045	*	*	*	*
HDP 180 2	12.5	112	147500	1797	*	*	*	*
HDP 180 2	14.5	97	162250	1708	*	579	*	*
HDP 180 2	15.7	89	165950	1615	*	579	*	*
HDP 180 2	17.1	82	160750	1438	*	579	*	*
HDP 180 2	19.8	71	168250	1300	*	579	*	434
HDP 180 2	21.4	66	172050	1230	*	579	*	434
HDP 180 3	25.8	54	154600	935	242	413	*	*
HDP 180 3	29.8	47	178950	935	242	413	*	*
HDP 180 3	32.2	43	186800	903	242	413	*	*
HDP 180 3	35.1	40	181150	804	242	413	*	*
HDP 180 3	40.6	34	184050	706	242	413	*	*
HDP 180 3	43.9	32	188200	668	242	413	*	*
HDP 180 3	50.1	27.9	185800	577	242	413	209	334
HDP 180 3	58.0	24.1	184050	494	242	413	209	334
HDP 180 3	62.7	22.3	186800	464	242	413	209	334
HDP 180 3	68.3	20.5	194000	443	242	413	209	334
HDP 180 3	79.0	17.7	184050	363	242	—	209	334
HDP 180 3	85.4	16.4	188200	343	242	—	209	334
HDP 180 4	103.0	13.6	185800	287	190	—	115	210
HDP 180 4	119.2	11.7	184050	245	190	—	115	210
HDP 180 4	128.9	10.9	186800	230	190	—	115	210
HDP 180 4	140.3	10.0	194050	220	190	—	115	210
HDP 180 4	162.4	8.6	184050	180	—	—	115	—
HDP 180 4	175.6	8.0	188200	170	—	—	115	—
HDP 180 4	197.2	7.1	185800	150	—	—	115	—
HDP 180 4	228.1	6.1	184050	128	—	—	115	—
HDP 180 4	246.7	5.7	186800	120	—	—	115	—
HDP 180 4	268.5	5.2	194050	115	—	—	—	—
HDP 180 4	310.7	4.5	184050	94	—	—	—	—
HDP 180 4	336.1	4.2	188200	89	—	—	—	—

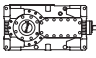
\*

 BONFIGLIOLI  
TECHNICAL SERVICE

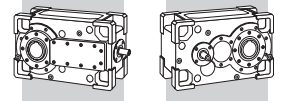
—

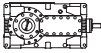
Verifica termica non necessaria / Thermal verification not necessary / Wärmeprüfung nicht erforderlich

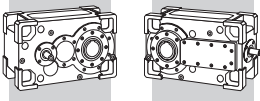


HDO 170					n <sub>1</sub> = 1400 rpm			
	i	n <sub>2</sub> [rpm]	Mn <sub>2</sub> [Nm]	Pn <sub>1</sub> [kW]	T <sub>amb</sub> = 20°C		T <sub>amb</sub> = 40°C	
					P <sub>T</sub> [kW]	P <sub>TFAN</sub> [kW]	P <sub>T</sub> [kW]	P <sub>TFAN</sub> [kW]
HDO 170 3	15.9	88	119200	1168	*	444	*	*
HDO 170 3	18.5	76	138400	1168	*	444	*	*
HDO 170 3	20.0	70	149900	1168	*	444	*	*
HDO 170 3	21.7	65	134700	969	*	444	*	*
HDO 170 3	26.2	53	151400	901	231	444	*	380
HDO 170 3	28.4	49	164000	901	231	444	*	380
HDO 170 3	30.7	46	145550	738	231	444	*	380
HDO 170 3	35.7	39	168950	738	231	444	161	380
HDO 170 3	38.6	34	167950	645	231	444	161	380
HDO 170 3	44.0	32	165750	587	231	444	161	380
HDO 170 3	47.6	29.4	162100	530	231	444	161	380
HDO 170 3	55.3	25.3	172900	487	231	444	161	380
HDO 170 3	59.9	23.4	165750	431	231	—	161	380
HDO 170 4	72.9	19.2	157950	344	213	—	143	315
HDO 170 4	84.6	16.6	172900	325	213	—	143	315
HDO 170 4	91.6	15.3	165750	288	213	—	143	—
HDO 170 4	99.3	14.1	176350	282	213	—	143	—
HDO 170 4	115.2	12.2	172900	239	213	—	143	—
HDO 170 4	124.8	11.2	165750	211	—	—	143	—
HDO 170 4	139.8	10.0	167000	190	—	—	143	—
HDO 170 4	162.3	8.6	172900	169	—	—	143	—
HDO 170 4	175.8	8.0	165750	150	—	—	143	—
HDO 170 4	190.5	7.3	176350	147	—	—	143	—
HDO 170 4	221.1	6.3	172900	124	—	—	—	—
HDO 170 4	239.5	5.8	165750	110	—	—	—	—





HDO 180					n <sub>1</sub> = 1400 rpm			
	i	n <sub>2</sub> [rpm]	Mn <sub>2</sub> [Nm]	Pn <sub>1</sub> [kW]	T <sub>amb</sub> = 20°C		T <sub>amb</sub> = 40°C	
					P <sub>T</sub> [kW]	P <sub>TFAN</sub> [kW]	P <sub>T</sub> [kW]	P <sub>TFAN</sub> [kW]
HDO 180 3	17.7	79	132500	1167	*	466	*	*
HDO 180 3	20.5	68	153300	1166	*	466	*	*
HDO 180 3	22.1	63	165800	1166	*	466	*	*
HDO 180 3	24.1	58	149700	968	*	466	*	*
HDO 180 3	27.9	50	173200	968	*	466	*	*
HDO 180 3	31.4	45	181350	901	255	466	*	401
HDO 180 3	34.1	41	161700	738	255	466	*	401
HDO 180 3	39.5	35	184050	726	255	466	*	401
HDO 180 3	42.7	33	188200	686	255	466	*	401
HDO 180 3	48.6	28.8	186800	599	255	466	202	401
HDO 180 3	52.9	26.5	180100	530	255	466	202	401
HDO 180 3	61.2	22.9	184050	468	255	466	202	401
HDO 180 3	66.2	21.1	188200	443	255	—	202	401
HDO 180 4	81.0	17.3	175450	344	229	—	155	330
HDO 180 4	93.7	14.9	184050	312	229	—	155	—
HDO 180 4	101.3	13.8	186800	293	229	—	155	—
HDO 180 4	110.3	12.7	194050	280	229	—	155	—
HDO 180 4	127.6	11.0	184050	229	229	—	155	—
HDO 180 4	138.0	10.1	188200	217	—	—	155	—
HDO 180 4	155.4	9.0	185550	190	—	—	155	—
HDO 180 4	179.8	7.8	184050	163	—	—	155	—
HDO 180 4	194.5	7.2	186800	153	—	—	—	—
HDO 180 4	211.6	6.6	194050	146	—	—	—	—
HDO 180 4	244.9	5.7	184050	119	—	—	—	—



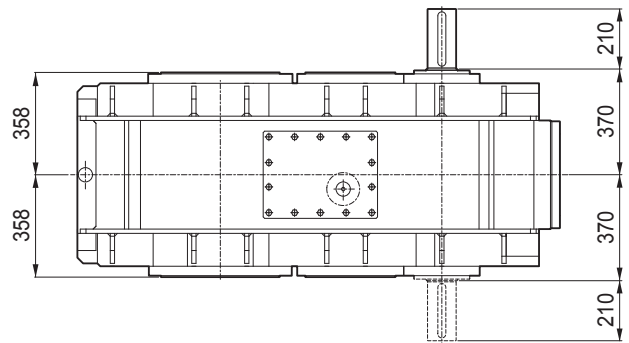
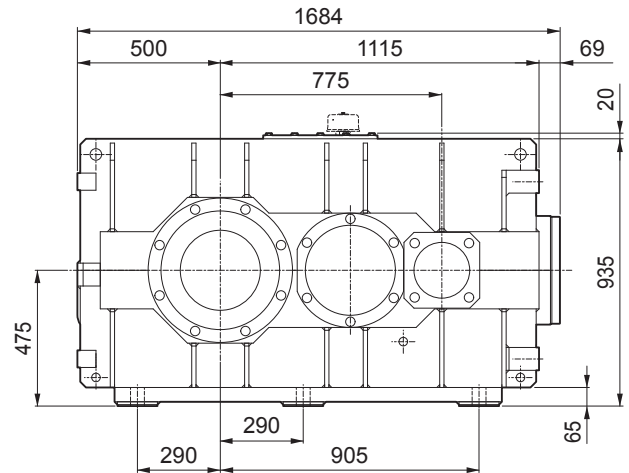
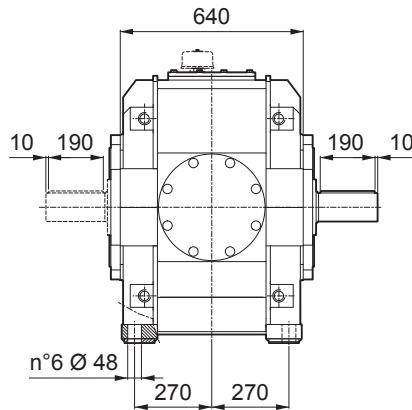
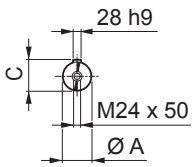
4 - DIMENSIONI E PESI

4 - DIMENSIONS AND WEIGHT

4 - ABMESSUNGEN UND GEWICHTE

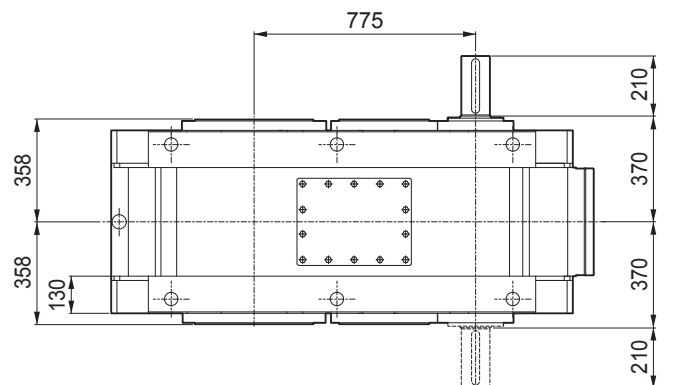
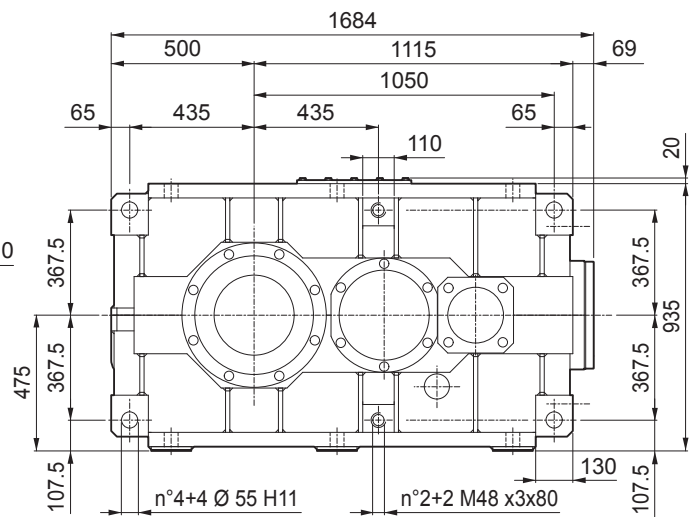
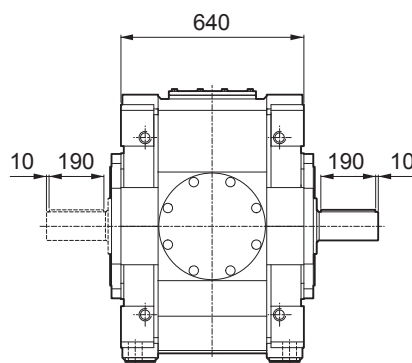
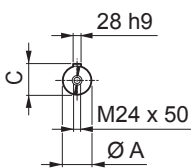
**HDP 170 2**

**B3**

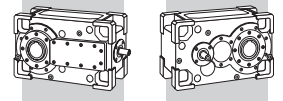


**HDP 170 2**

**V5**

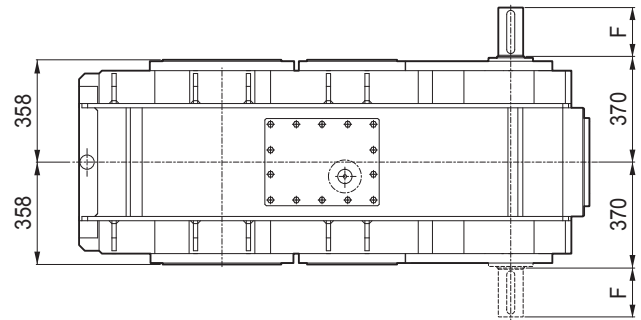
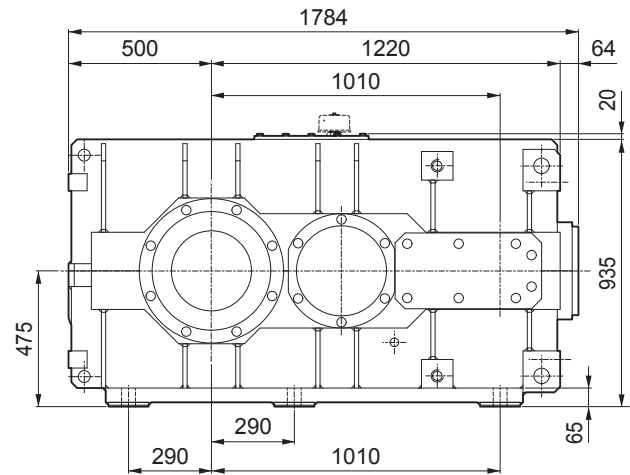
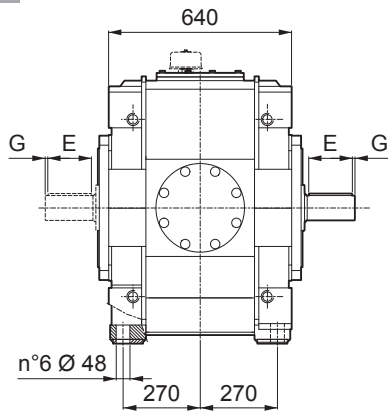
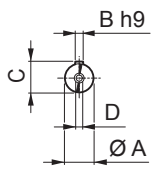


VP	i =	A	C	kg
HDP 170 2	7.8 ... 14.2	110 m6	116	3495
HDP 170 2	15.4 ... 19.3	100 m6	106	3495



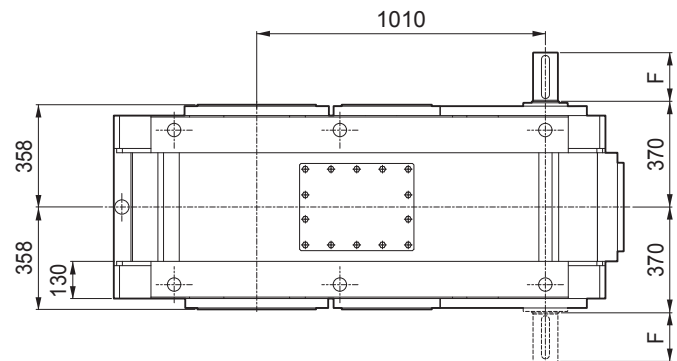
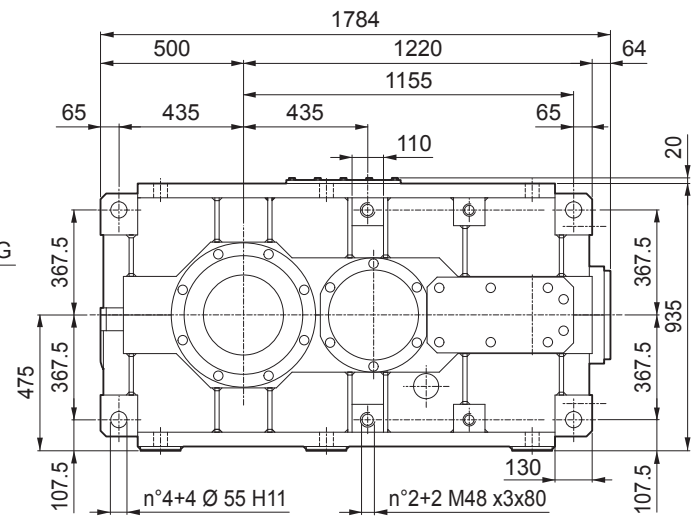
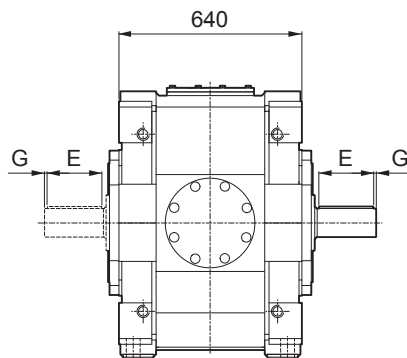
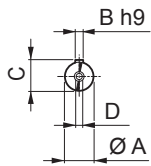
## HDP 170 3 / 4

**B3**

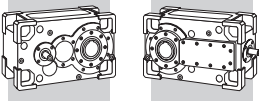


## HDP 170 3 / 4

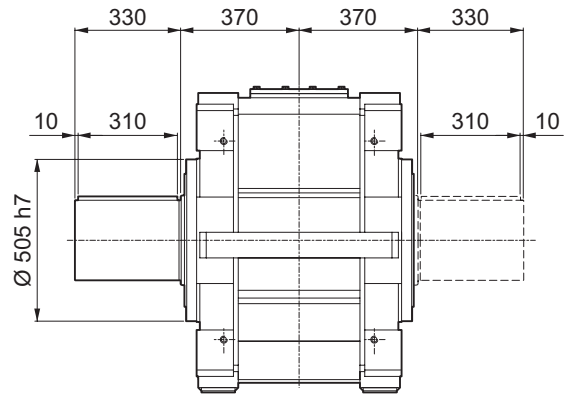
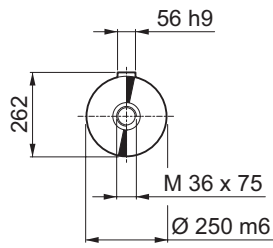
**V5**



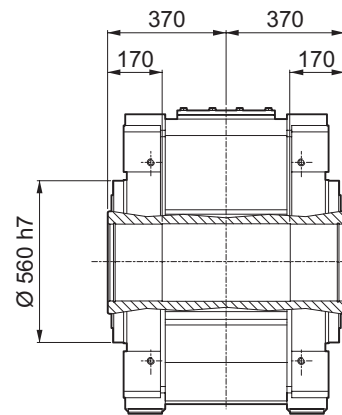
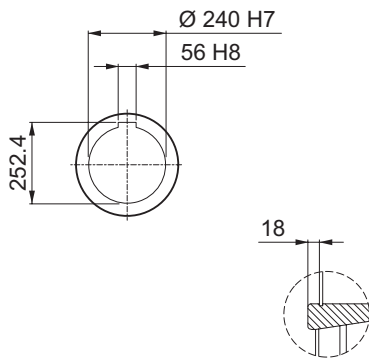
VP	i =	A	B	C	D	E	F	G	kg
HDP 170 3	23.2 ... 39.7	90 m6	25	95	M24x50	160	170	5	3765
HDP 170 3	45.1 ... 77.2	75 m6	20	79.5	M20x42	125	140	7.5	3765
HDP 170 4	92.7 ... 158.8	55 m6	16	59	M20x42	90	110	10	3795
HDP 170 4	177.4 ... 303.8	50 k6	14	53.5	M16x36	100	110	5	3795



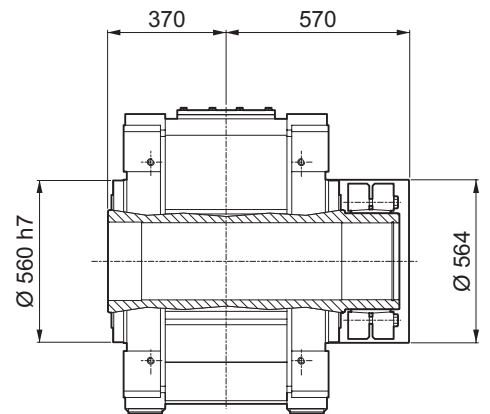
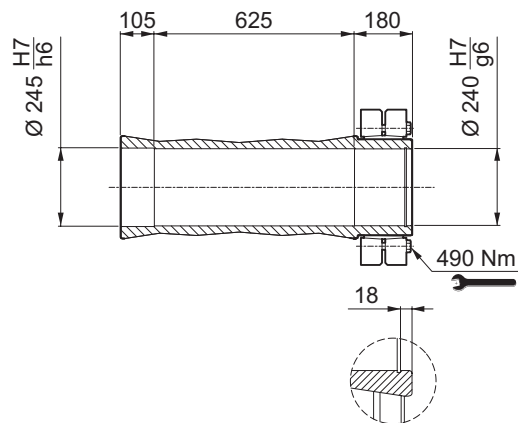
### HDP 170\_LP

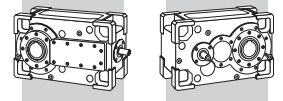


### HDP 170\_H



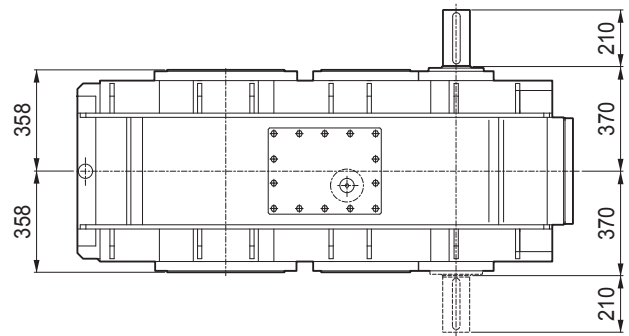
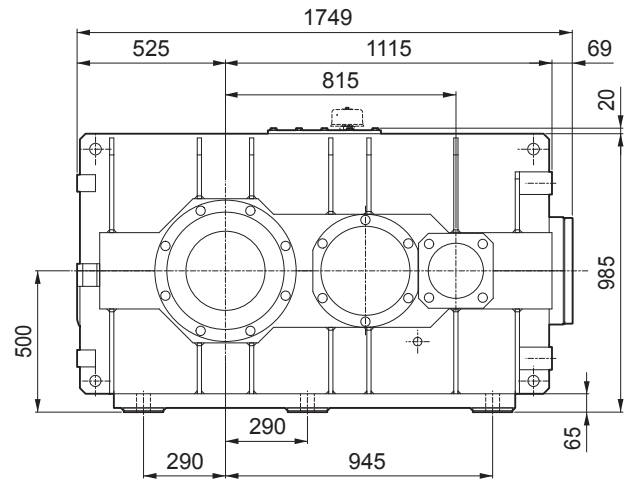
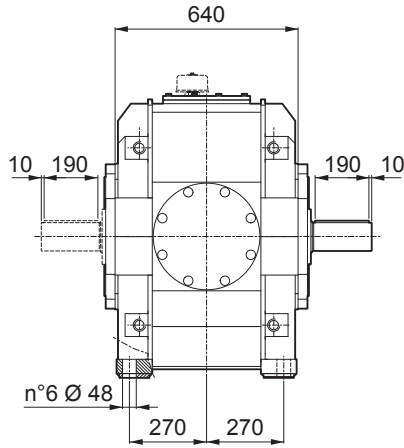
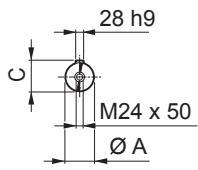
### HDP 170\_S





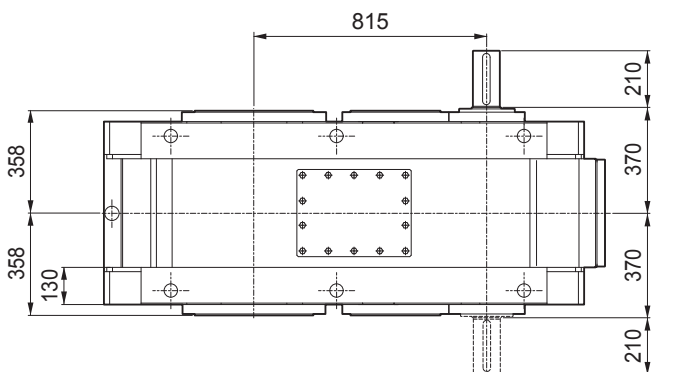
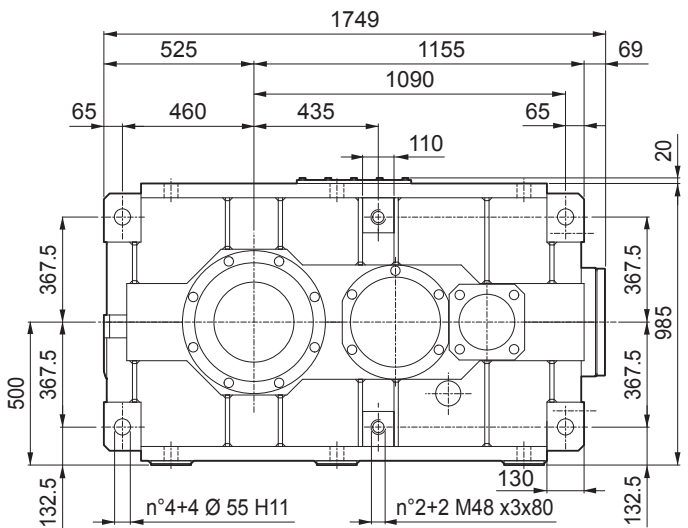
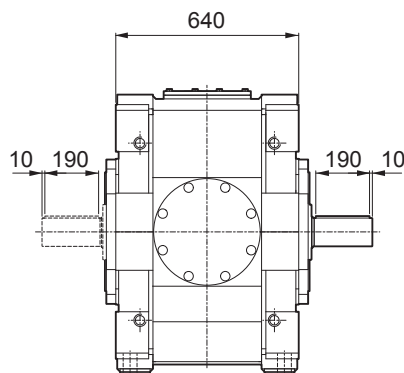
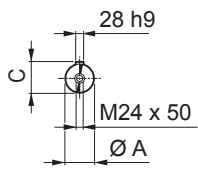
# HDP 180 2

**B3**

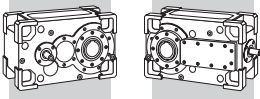


# HDP 180 2

**V5**

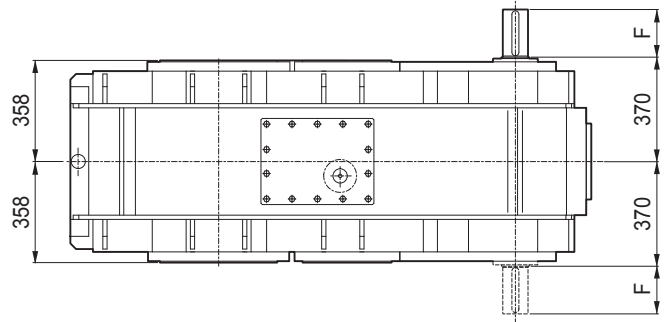
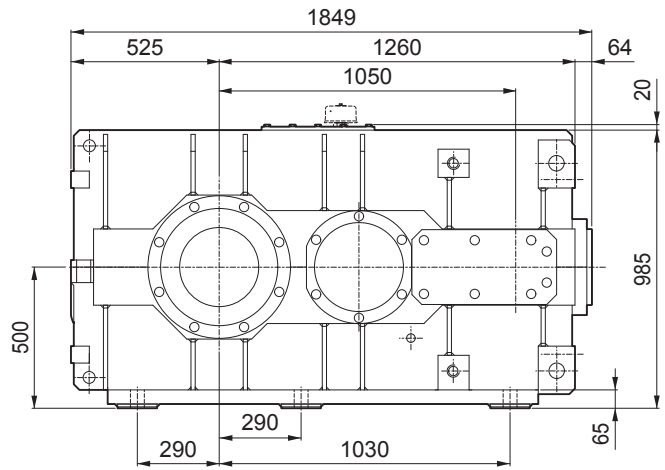
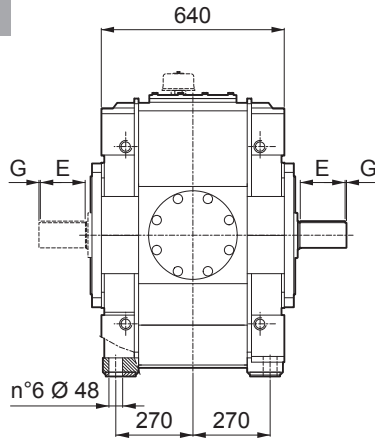
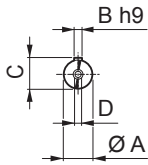


VP	i =	A	C	kg
HDP 180 2	8.7 ... 15.7	110 m6	116	3640
HDP 180 2	17.1 ... 21.4	100 m6	106	3640



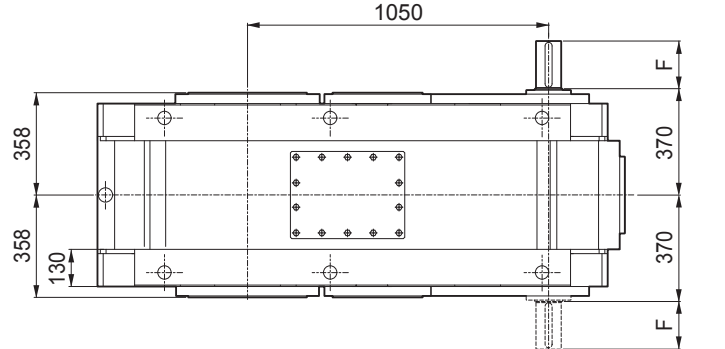
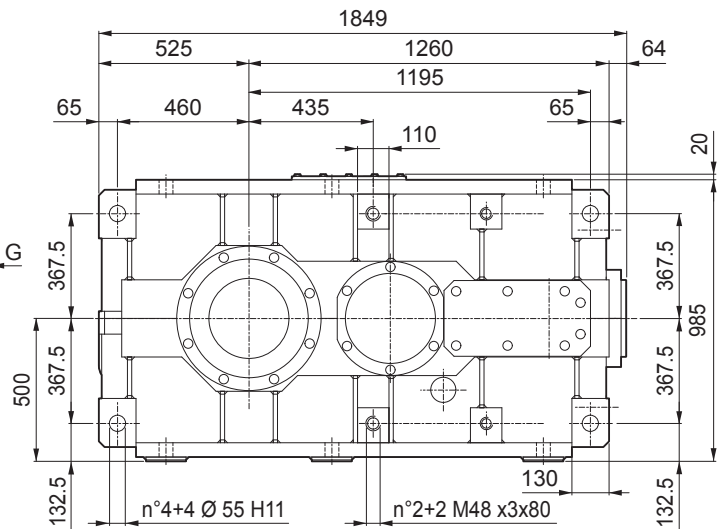
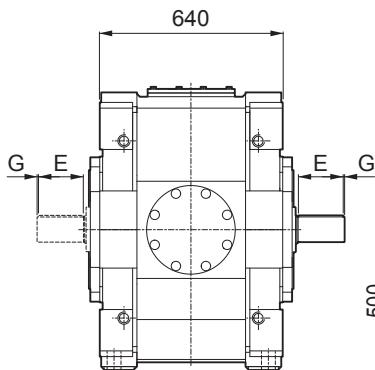
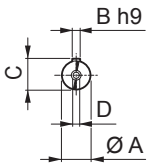
## HDP 180 3 / 4

**B3**

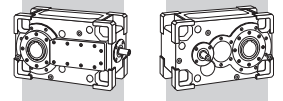


## HDP 180 3 / 4

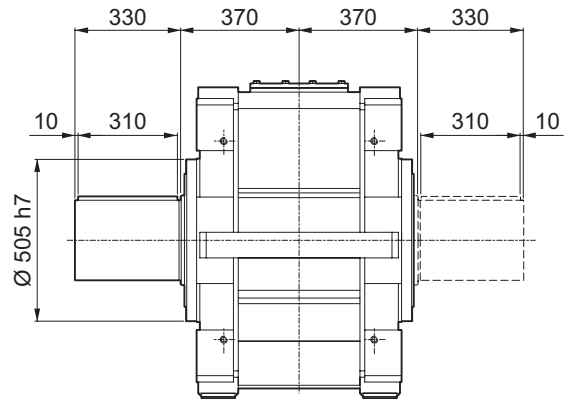
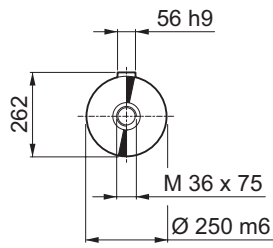
**V5**



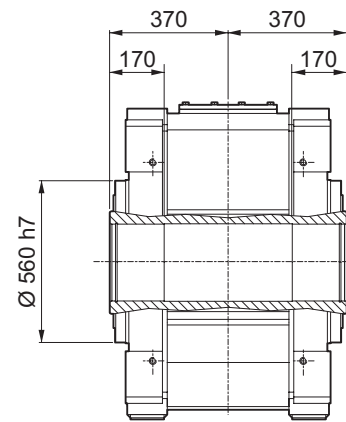
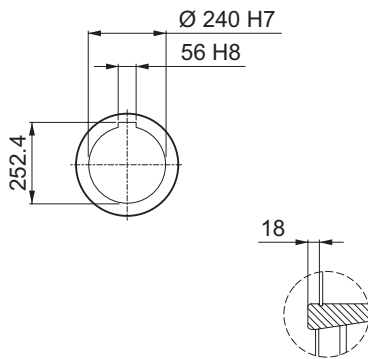
VP	i =	A	B	C	D	E	F	G	kg
HDP 180 3	25.8 ... 43.9	90 m6	25	95	M24x50	160	170	5	3860
HDP 180 3	50.1 ... 85.4	75 m6	20	79.5	M20x42	125	140	7.5	3860
HDP 180 4	103.0 ... 175.6	55 m6	16	59	M20x42	90	110	10	3890
HDP 180 4	197.2 ... 336.1	50 k6	14	53.5	M16x36	100	110	5	3890



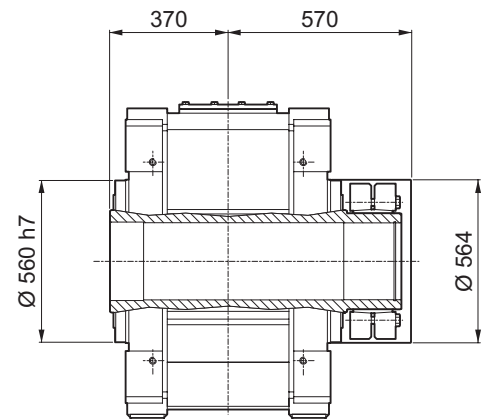
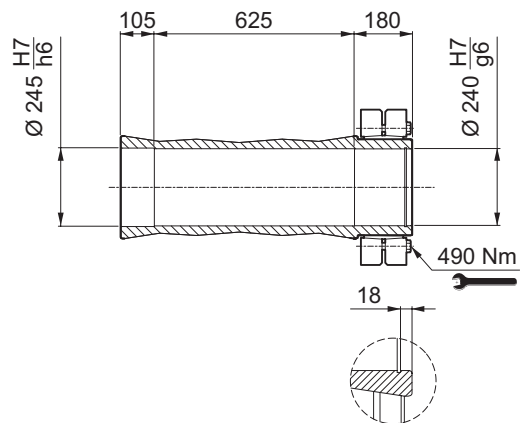
### HDP 180 \_ LP

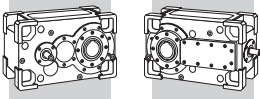


### HDP 180 \_ H



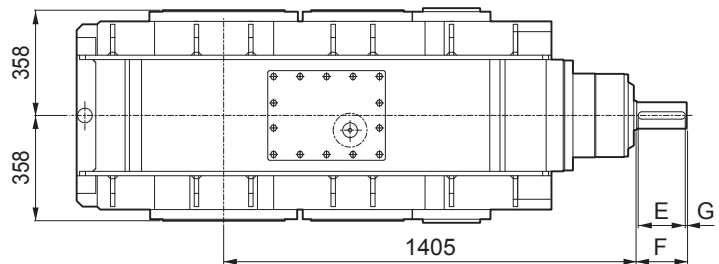
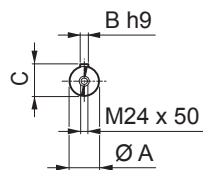
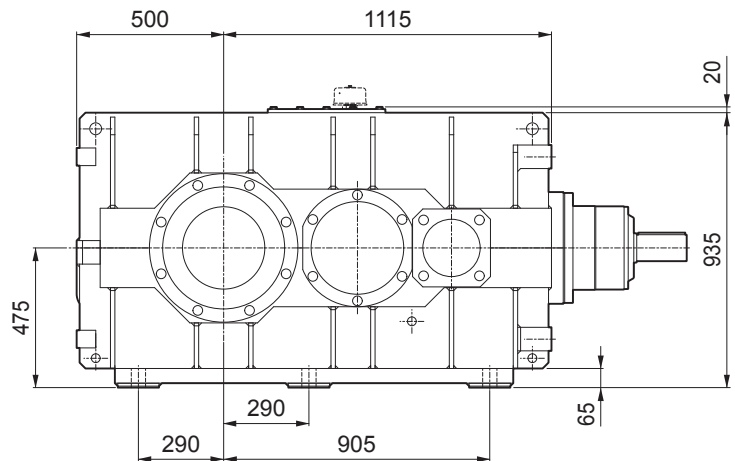
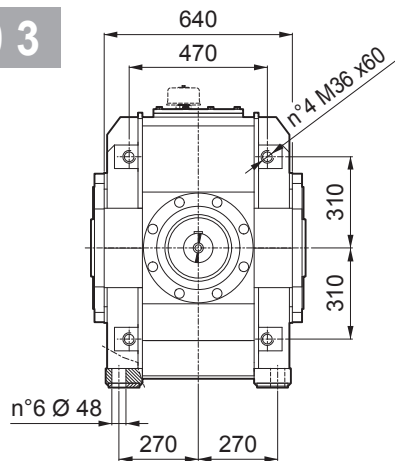
### HDP 180 \_ S





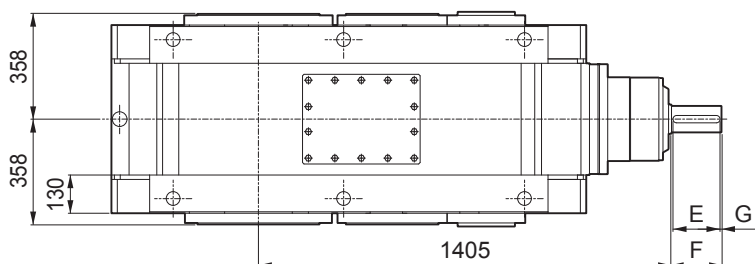
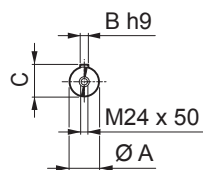
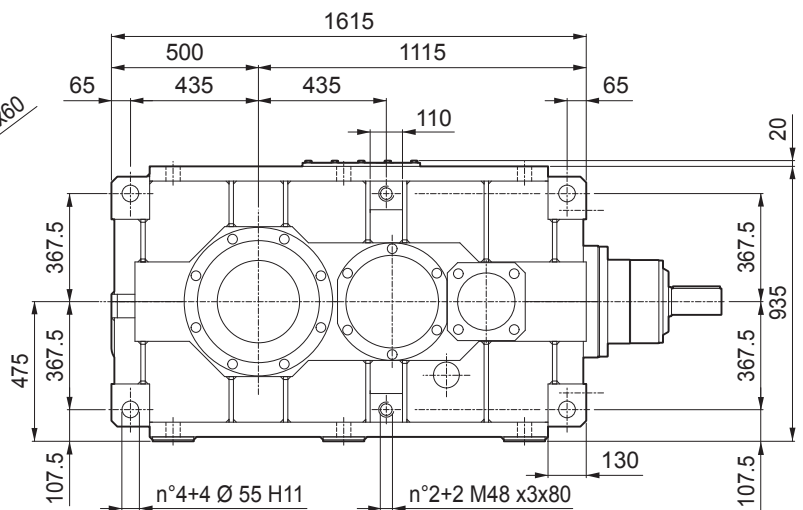
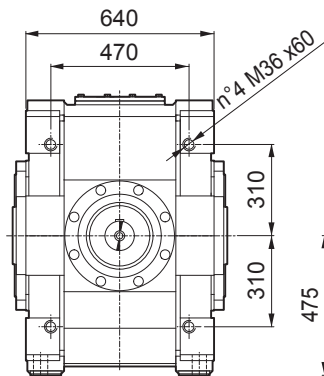
## HDO 170 3

**B3**



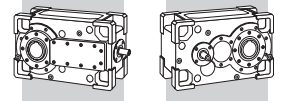
## HDO 170 3

**V5**



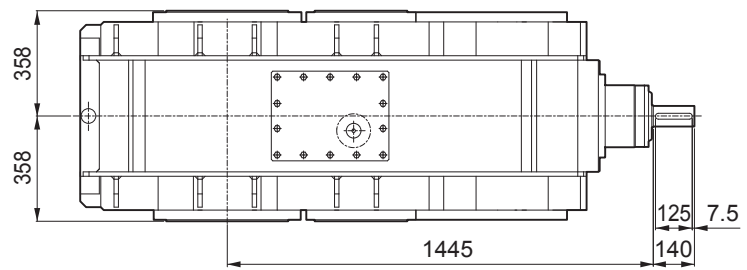
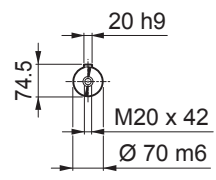
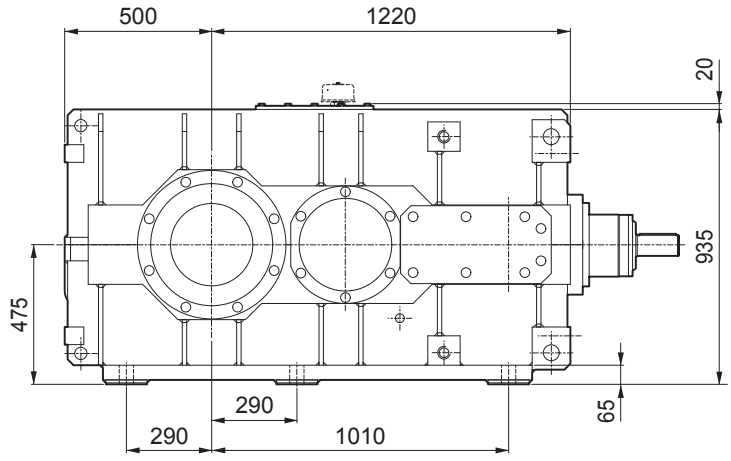
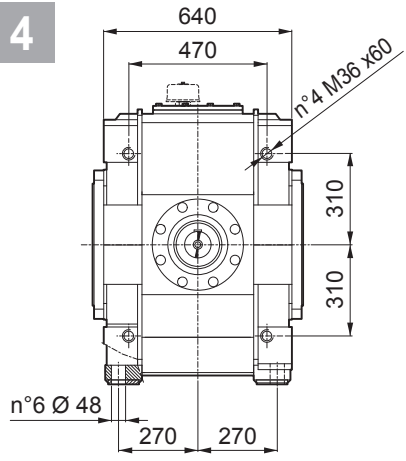
VP	i =	A	B	C	E	F	G	kg
HDO 170 3	11.2 ... 21.7	100 m6	28	106	190	210	10	3675
HDO 170 3	26.2 ... 59.9	90 m6	25	95	160	170	5	3675





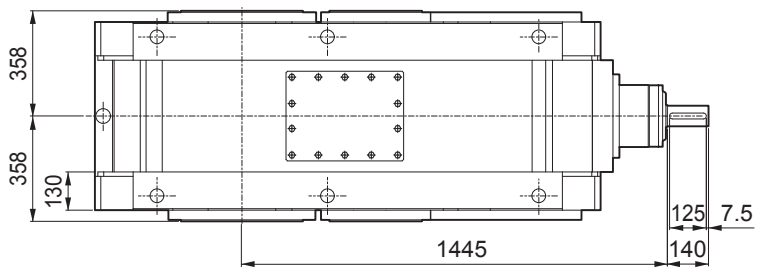
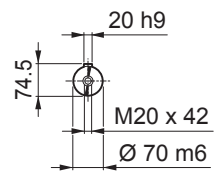
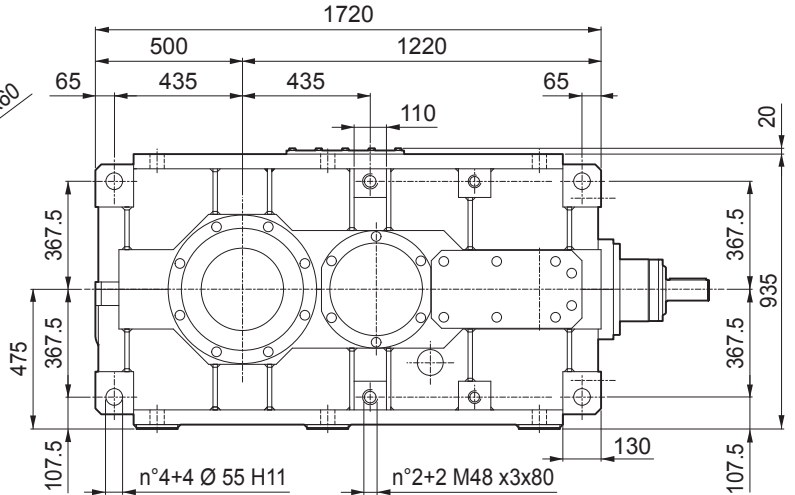
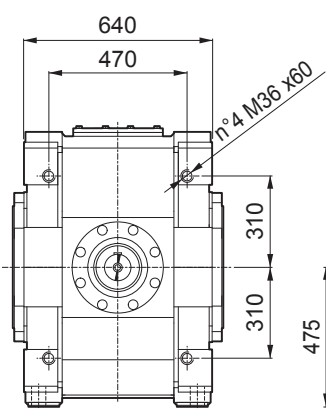
# HDO 170 4

**B3**

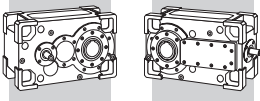


# HDO 170 4

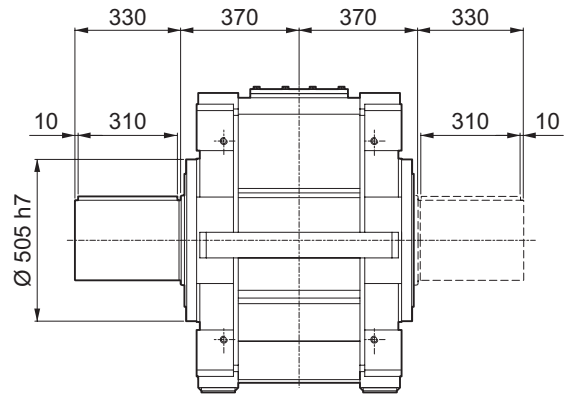
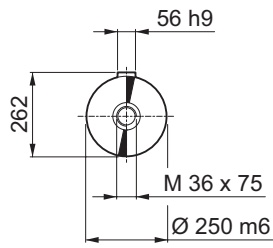
**V5**



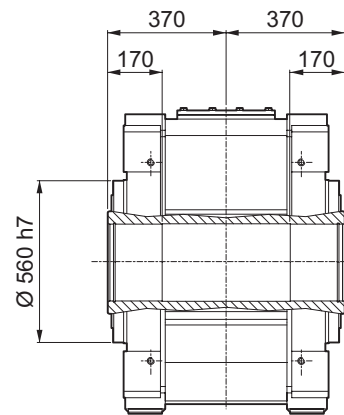
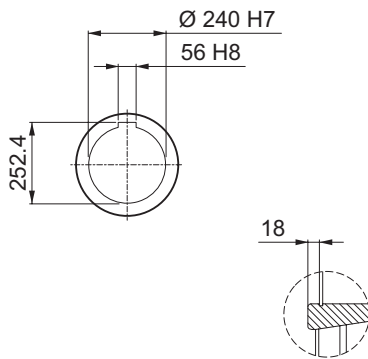
VP	
HDO 170 4	3780



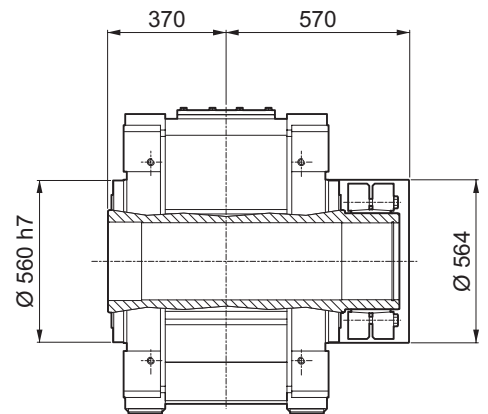
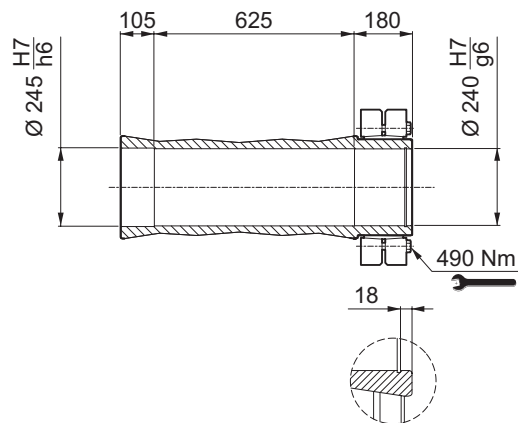
### HDO 170\_LP

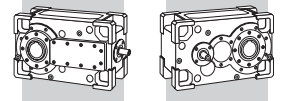


### HDO 170\_H



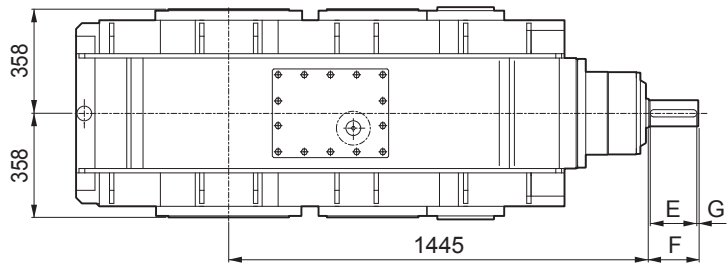
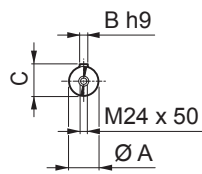
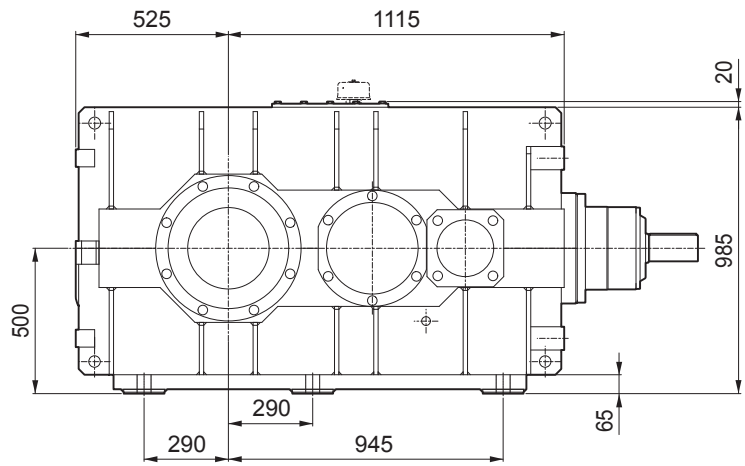
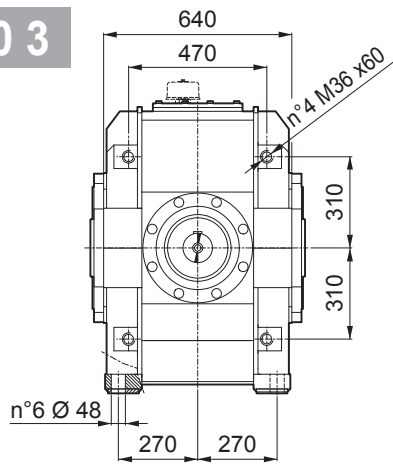
### HDO 170\_S





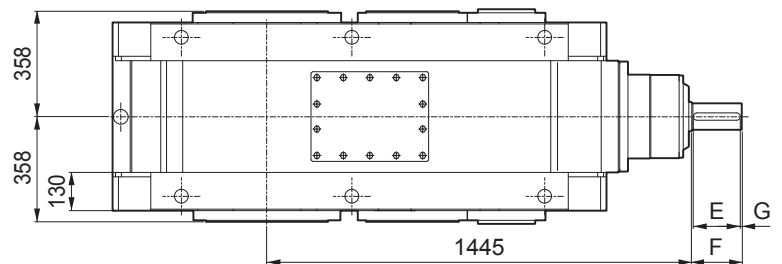
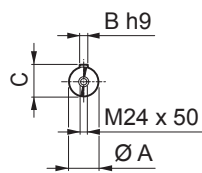
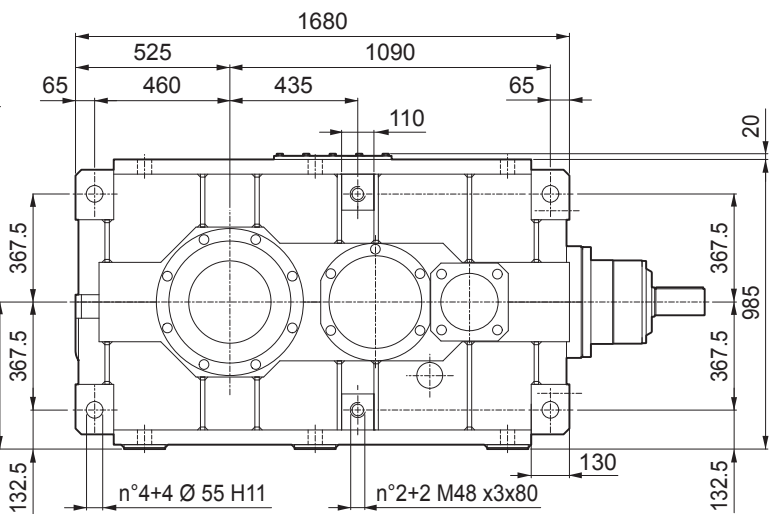
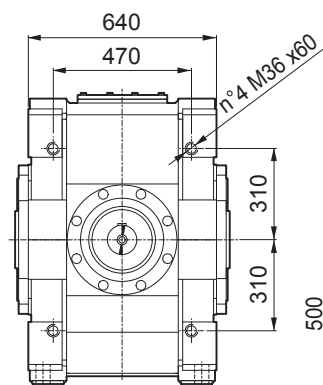
## HDO 180 3

**B3**

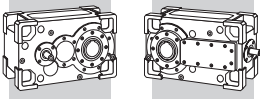


## HDO 180 3

**V5**

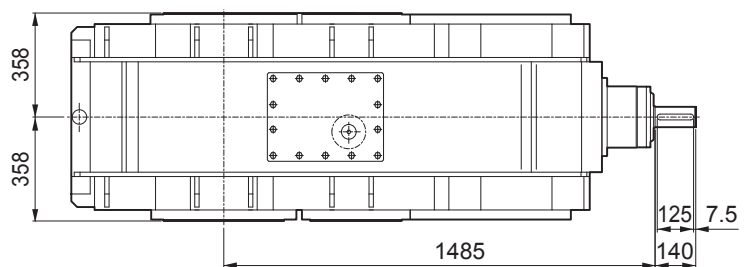
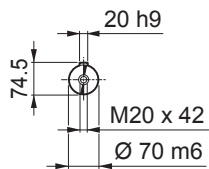
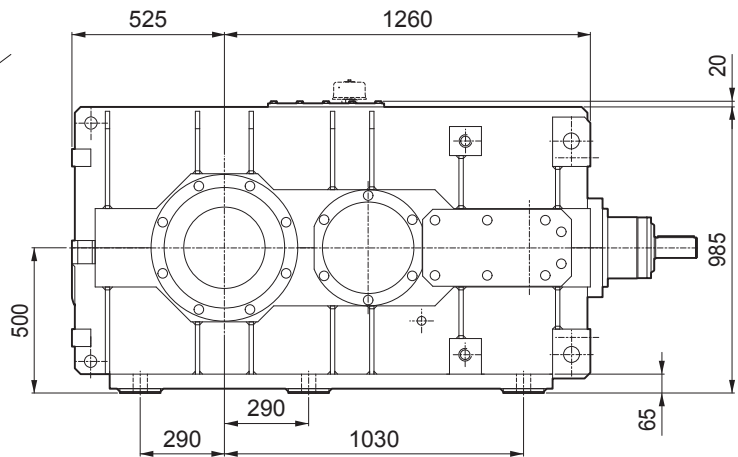
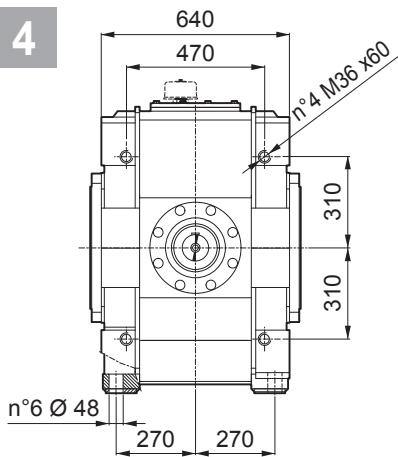


VP	i =	A	B	C	E	F	G	kg
HDO 180 3	12.3 ... 27.9	100 m6	28	106	190	210	10	3820
HDO 180 3	31.4 ... 66.2	90 m6	25	95	160	170	5	3820



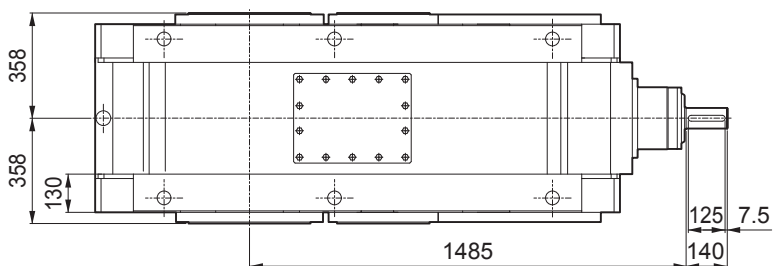
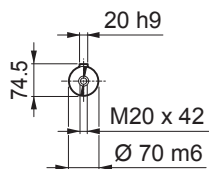
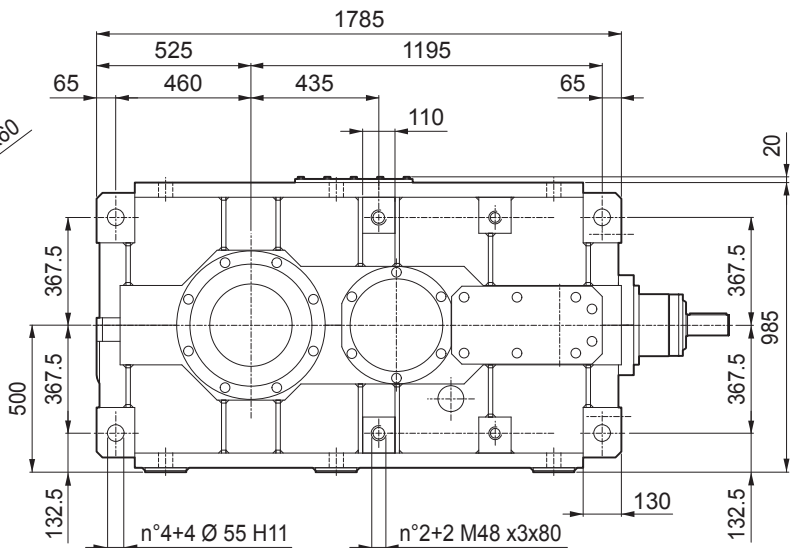
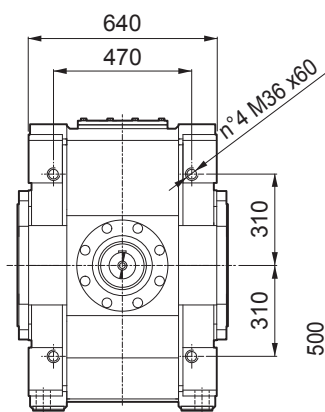
# HDO 180 4

**B3**

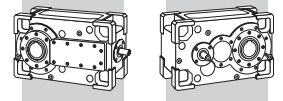


# HDO 180 4

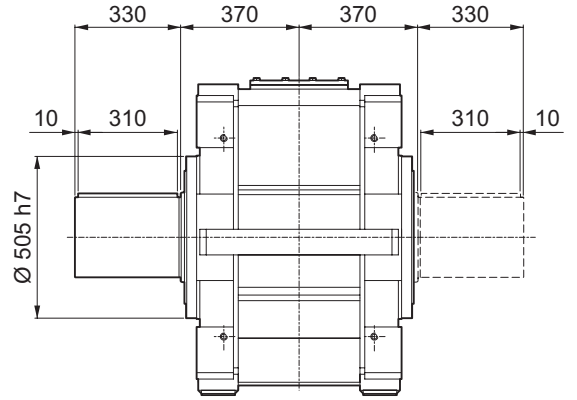
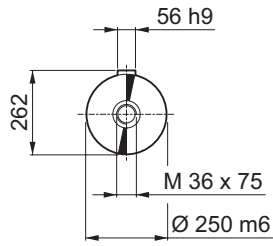
**V5**



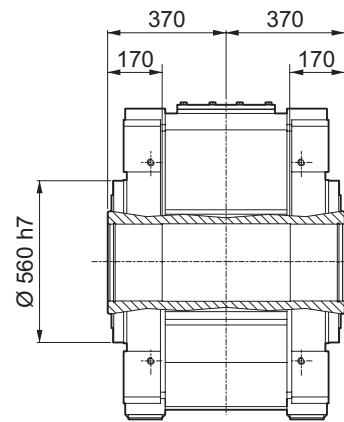
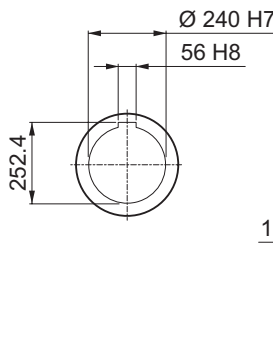
VP	
HDO 180 4	3875



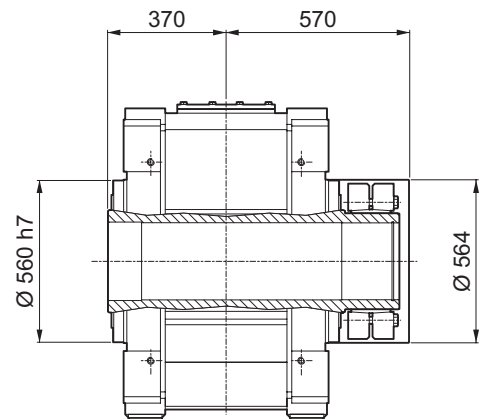
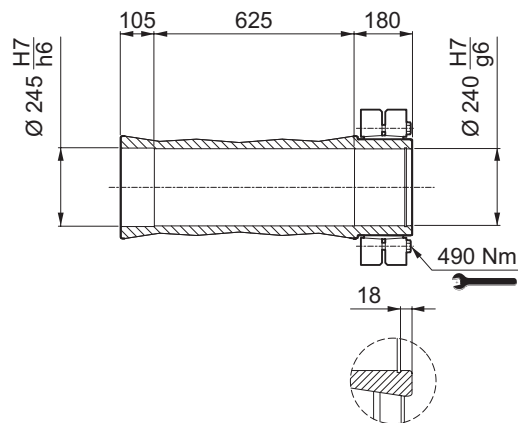
### HDO 180 \_ LP

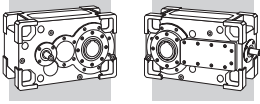



### HDO 180 \_ H



### HDO 180 \_ S



**INDICE DI REVISIONE (R)****INDEX OF REVISIONS (R)****LISTE DER ÄNDERUNGEN (R)**

<b>R0</b>			
	<b>Descrizione</b>	<b>Description</b>	<b>Beschreibung</b>

110316

Questa pubblicazione annulla e sostituisce ogni precedente edizione o revisione. Ci riserviamo il diritto di apportare modifiche senza preavviso. È vietata la produzione anche parziale senza autorizzazione.

*This publication supersedes and replaces any previous edition and revision. We reserve the right to implement modifications without notice. This catalogue cannot be reproduced, even partially, without prior consent.*

Diese Veröffentlichung annulliert und ersetzt jeder hergehende Edition oder Revision. BONFIGLIOLI behält sich das Recht vor, Änderungen one vorherige Informationen durchzuführen.





Dal 1956 Bonfiglioli progetta e realizza soluzioni innovative ed affidabili per il controllo e la trasmissione di potenza nell'industria e nelle macchine operatrici semoventi e per le energie rinnovabili.

Bonfiglioli has been designing and developing innovative and reliable power transmission and control solutions for industry, mobile machinery and renewable energy applications since 1956.

Seit 1956 plant und realisiert Bonfiglioli innovative und zuverlässige Lösungen für die Leistungsüberwachung und -übertragung in industrieller Umgebung und für selbstfahrende Maschinen sowie Anlagen im Rahmen der erneuerbaren Energien.