



Solutions for
**HEAVY
INDUSTRY**

 **Bonfiglioli**

BONFIGLIOLI SOLUTIONS FOR HEAVY INDUSTRY

Among Bonfiglioli product portfolio, a wide range of solutions is dedicated to heavy industry applications. By offering complete solutions (gearboxes-motors-inverters), we are able to satisfy all the market requirements in terms of robustness, quality and superior reliability.

Operating from the Bonfiglioli many subsidiaries around the world, our technical service is always available to support customers in selecting the most suitable type and size of product for the application at hand.



A ONE-STOP SHOP FOR ALL YOUR INDUSTRIAL APPLICATIONS

Every year, Bonfiglioli manufactures over 1.5 million products offering its customers fully integrated and solutions, ideal for a wide range of applications in over twenty industrial sectors.

With more than 60 years of experience, our extensive range of gearboxes, gearmotors, electric motors and inverters offers the opportunity to benefit from exceptional technical characteristics and superb performance in all industrial applications.

Our mechatronic solutions for industrial automation deliver the highest possible level of precision, efficiency and energy optimization. These solutions include precision planetary gearboxes, servomotors, open and closed loop inverters, servo inverters and regenerative inverters.



MEET OUR
CUSTOMERS'
NEEDS



WORLDWIDE
DISTRIBUTION
NETWORK



IMPROVE
APPLICATION
PERFORMANCE

ALWAYS BY OUR CUSTOMER'S SIDE, ALL OVER THE WORLD

Bonfiglioli has globalized production over the years. Today, we operate 14 manufacturing plants around the world to serve customers in local markets more effectively. Our plants in Italy, Germany, USA, Brazil, India, China, Vietnam, and Slovakia form a truly efficient distribution network.

Excellence is our number one priority.

We use the latest technologies to optimize our daily production. Bonfiglioli is fully committed to a more sustainable workplace and supports various local initiatives.

All Bonfiglioli employee pay the utmost attention to even the smallest details, to ensure that our customers receive products with unrivalled quality.



LEAN
MANUFACTURING



INDUSTRY 4.0



FAST DELIVERY
TIMES



WORLDWIDE
PRESENCE

SHARING THE VALUE OF OUR WORK WITH YOU

Our team is fully dedicated to continuous improvement in the fields of quality, safety and the environment, across the entire value chain, from the smallest supplier to the end customer.

Bonfiglioli management systems are certified to ISO 9001:2008, ISO 14001 and OHSAS 18001, while our products are covered by 7 international certifications.

Responsibility, excellence and continuous improvement are some of the basic elements that make Bonfiglioli a preferred partner.

SYSTEM CERTIFICATIONS:



PRODUCT CERTIFICATIONS:



HEAVY MACHINERY HAS BONFIGLIOLI PRODUCTS AT ITS HEART

The HDP parallel shaft, HDO right-angle and 300 planetary series offer designers the ultimate flexibility in build architecture and transmissible power range.

For every installation, cooling or lubrication requirement, each gearmotor can easily be rendered fit-for-purpose through the long, complete list of standard options and accessories.

Logistics

(belt, chain, bucket, screw conveyors, gantry and trolley drives, etc.)

Winch and Lift

(cranes, hoists, winches, etc.)

Packaging

(filling machines, palletizers, stackers, etc.)

Raw material and resources

(metals, petroleum, forestry, rubber, plastics, cement, sand & stone, etc.)

Mining

(ore crushers, apron and screw feeders, bucket elevators, mills and kilns, etc.)

Purification and Production

(pulp and paper, air cooling, sewage, recycling, etc.)



PRODUCT RELIABILITY IS ACHIEVED THROUGH A PRODUCTION PROCESS GEARED TOWARDS EXCELLENCE

All essential parts are produced in Bonfiglioli's own plant using constantly updated machine tools of the latest generation.

Machining technology is therefore fully owned by Bonfiglioli and part of a know-how acquired over 50 years of manufacturing.

Today, precision machining is very much a part of Bonfiglioli's consolidated heritage.

The CNC machine tools and equipment used for the production of gears and other essential component parts are all state-of-the-art in terms of quality, efficiency and productivity in general.

Advanced machinery has always been central to Bonfiglioli's production system and Bonfiglioli has always assigned top priority to the quality and efficiency of its machine park, and has invested accordingly.



BONFIGLIOLI PRODUCTS

INDUSTRIAL PLANETARY GERMOTORS & UNITS



300M Series

Bonfiglioli's 300M Series is an outstanding solution for all heavy-duty applications where compactness is not an option. Thanks to its modular design, the 300M Series can be customized to match an extremely wide range of applications. Bonfiglioli's expertise in planetary technology ensures high-quality product design and manufacturing procedures. The 300 Series operates without unwanted downtime even in the harshest environments. This planetary gearbox achieves top-class flexibility thanks to several outputs, as well as input configurations available for all 20 sizes.



ATEX GEARBOX AVAILABLE

GEAR RATIOS

- 3.4 ... 2,916

MECHANICAL RATING

- up to 1,050 kW

MOTORS

- Input with solid shaft
- Input with e-motor coupling:
 - M, ME, MX (compact asynchronous)
 - BN, BE, BX (IEC asynchronous)
 - BSR (IEC reluctance)
 - BS (IEC single phase)

MOTOR OPTIONS

- Thermistors and thermostat sensors
- Independent forced cooling
- Incremental, sin/cos absolute single/multi-turn encoders
- Tropicalization
- Anti-condensate heaters
- Backstop

MAIN OPTIONS

- In line/right angle version
- Independent cooling unit
- Patented integrated cooling solution
- Taconite seals
- ATEX certification for explosive environments

KEY BENEFITS

- High torque density
- Extreme speed reduction and high output torque
- Low maintenance cost
- Extremely customizable
- Flexibility
- Usable in explosive environments

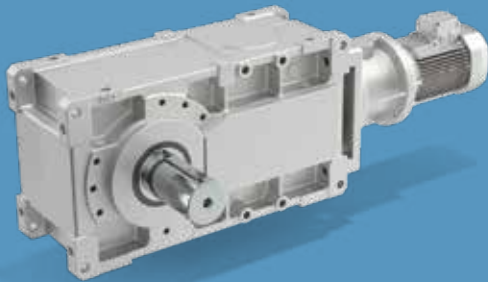
KEY FEATURES

- Highly transmissible torque/weight ratio
- Combined version (HD, A, W/VF series)
- High quality standards
- High shock resistance
- Wide range of options and accessories
- Electric and hydraulic motor compatible
- Built-in cooling fan
- ATEX version 2G/2D

TORQUE (Nm)

300	1,250
301	2,460
303	2,970
304	3,960
305	5,800
306	10,840
307	15,680
309	23,240
310M	33,460
311M	49,210
313M	60,940
314M	80,640
315M	100,800
316M	134,390
317M	207,490
318M	297,550
319	471,190
321	655,740
323	890,310
325	1,286,000

HELICAL BEVEL HEAVY DUTY GEAR UNITS



HDO Series

When high torque, robustness, reliability and long-operating life are required, Bonfiglioli's HDO Series is the best possible option. Thanks to high-quality materials and an optimized design, the HD Series can operate in the harshest environments, as well as in explosive atmospheres, with low maintenance costs and long service intervals. The HDO Series can also be fully customized thanks to an extremely broad portfolio of options and accessories.



ATEX GEARBOX AVAILABLE

GEAR RATIOS

- 5.6 ... 490

MOTORS

- Input with solid shaft
- Input with e-motor coupling:
 - BN, BE, BX (IEC asynchronous)
 - BSR (IEC reluctance)

MOTOR OPTIONS

- Thermistors and thermostat sensors
- Independent forced cooling
- Incremental, sin/cos absolute single/multi-turn encoders
- Tropicalization
- Anti-condensation heaters

MAIN OPTIONS

- Fan cooling, cooling coil, oil heater
- External cooling unit
- Backstop
- Forced lubrication
- Temperature and oil level sensors
- Drywell
- Taconite seals
- ATEX certification for explosive environments

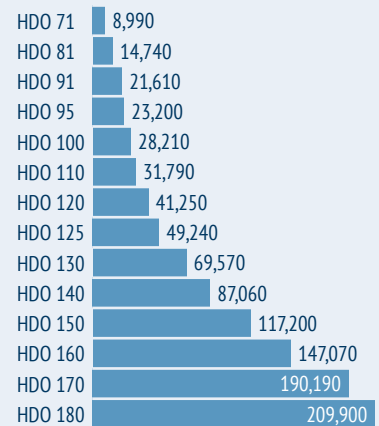
KEY BENEFITS

- Highly transmissible power
- Robustness
- Mounting flexibility
- Reliability
- Usable in explosive environments

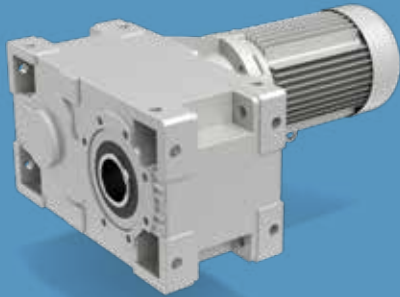
KEY FEATURES

- Spheroidal cast iron housing
- I/O shaft planarity and gearbox symmetry
- Wide range of options and accessories
- High design standards
- Atex - gearbox for explosive environments 2G/2D

TORQUE (Nm)



HELICAL PARALLEL SHAFT HEAVY DUTY GEAR UNITS



HDP Series

When high torque, robustness, reliability and long-operating life are required, Bonfiglioli's HDP Series is the best possible option. Thanks to high-quality materials and an optimized design, the HD Series can operate in the harshest environments, as well as in explosive atmospheres, with low maintenance costs and long service intervals. The HDP Series can also be fully customized thanks to an extremely broad portfolio of options and accessories.



ATEX GEARBOX AVAILABLE

GEAR RATIOS

- 7.1 ... 500

MOTORS

- Input with solid shaft
- Input with e-motor coupling:
 - BN, BE, BX (IEC asynchronous)
 - BSR (IEC reluctance)

MOTOR OPTIONS

- Thermistors and thermostat sensors
- Independent forced cooling
- Incremental, sin/cos absolute single/multi-turn encoders
- Tropicalization
- Anti-condensation heaters

MAIN OPTIONS

- Fan cooling, cooling coil, oil heater
- External cooling unit
- Backstop
- Forced lubrication
- Temperature and oil level sensors
- Drywell
- Taconite seals

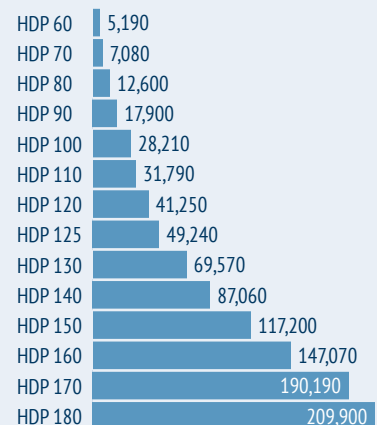
KEY BENEFITS

- High transmissible power
- Robustness
- Mounting Flexibility
- High customization level
- Reliability

KEY FEATURES

- Spheroidal Cast Iron Housing
- I/O Shaft planarity and gearbox symmetry
- Wide range of options and accessories
- High standards design
- Atex- gearbox for explosive environments 2G/2D

TORQUE (Nm)



PREMIUM INVERTERS



Active Series

The Bonfiglioli Active Series contains flexible frequency inverters that are both versatile and easy to use. This product features high performance control and unbeatable advantages in scalability and compact size.

POWER SUPPLY & POWER RANGE

- ACT201: 0.55 - 9.2 kW / single or three-phase 200 - 240V / 50 - 60 Hz ($\pm 10\%$)
- ACT401: 0.55 - 132 kW / three-phase 360 - 480V / 50 - 60 Hz ($\pm 10\%$)

MOTOR CONTROL

- Asynchronous AC motors
- Permanent magnet synchronous (brushless) motors

MOUNTING OPTIONS

- Cabinet mounting for all sizes
- Optional feed-through mounting
- Optional DIN rail mounting frame size 1
- Optional ColdPlate mounting

ENCLOSURE

- IP20 (EN 60529)

KEY FEATURES

- Field-oriented control with or without encoder

RATED SPEED

- 0...599 Hz

ENCLOSURE

- IP20 (EN 60529)

CERTIFICATIONS

- UL508c

CONFORMITY

- CE
- EN61800

HARDWARE FEATURES

- Integrated dynamic braking module
- DC link connection
- Standard HTL encoder interface
- Motor temperature monitoring
- Plug-in power terminals (up to 3kW)
- Plug-in and programmable control terminals
- 6 digital input, 1 multifunction input
- 1 digital output, 1 multifunction output
- 1 relay output (changeover contact)

SOFTWARE FEATURES

- Programmable reference value channel
- Programmable start and stop characteristics
- Motor potentiometer
- Programmable S curve
- 4 data sets
- Auto startup and commissioning
- Auto reset after failure
- Auto start after power failure
- PL controller
- Programmable logic and timer functions
- Volume flow control
- Bumpless torque/speed changeover,
- Master/slave function with electronic gear,
- Simple positioning function,
- Mechanical brake control free of friction
- Index control
- Intelligent current limits
- Power failure control
- Comprehensive monitoring and protection capabilities
- High speed control
- Functions for lift, crane and winch applications
- 3 different brake management functions

HIGH PERFORMANCE FREQUENCY INVERTER



Active Cube Series

Active Cube (ACU) is the high performance frequency inverter with a wide power range from 0.25 kW to 400 kW (with parallel drive connection up to 1200 kW). It can control asynchronous, synchronous and synchronous reluctance motors in open and closed loop operations. Several optional modules for communication and expansions for I/O control and encoder evaluation make the premium frequency inverter ideal for a wide range of high performance applications, such as warehouse and material handling, automatic storage systems, textile machines, packaging, food & beverage, motion control and hoists and cranes applications. For integration in functional safety environments, ACU offers STO functionality according to SIL 3 and PL e.

POWER SUPPLY & POWER RANGE

- ACU210: 0.25 - 9.2 kW / single or three-phase 200 - 240V / 50 - 60 Hz ($\pm 10\%$)
- ACU410: 0.25 - 400 kW / three-phase 360 - 480V / 50 - 60 Hz ($\pm 10\%$)
Parallel connection up to 1200 kW
- ACU510: 160 - 400 kW / three-phase 525V / 50 - 60 Hz ($\pm 10\%$)
Parallel connection up to 1200 kW
- ACU610: 160 - 400 kW / three-phase 690V / 50 - 60 Hz ($\pm 10\%$)
Parallel connection up to 1200 kW

MOTOR CONTROL

- (open loop or optional closed loop):
- Asynchronous AC motors
 - Synchronous Reluctance motors
 - Permanent magnet synchronous (brushless) motors

MOUNTING OPTIONS

- Cabinet mounting for all sizes
- Optional feed-through mounting
- Optional DIN rail mounting frame size 1
- Optional ColdPlate (sizes 1 to 5)
- Optional liquid cooling (sizes 5 to 8)

OVERLOAD CAPACITY

- up to 150% for 60 seconds
- up to 200% for 1 second

KEY FEATURES

- Optionally expanding series for field bus communication and encoder evaluation
- Plug-in power terminals (up to 3kW)
- Plug-in and programmable control terminals
- DC link connection
- Integrated brake chopper
- Positioning function via field bus (Motion control compatible with CiA 402)
- Integrated VPLC
- Master/slave function with electronic gear
- Power failure control
- Integrated safe torque off STO (SIL 3 / PL e) function
- Output frequency 0...599 Hz, higher frequencies on request
- Diagnosis and setup via optional keypad or PC software

OPTIONS

- Different field bus options, such as CANopen, PROFIBUS, Modbus, EtherCAT, PROFINET, Varan
- Optional I/O extensions for additional digital and analogue inputs & outputs
- Optional keypad for diagnostics and parameter setup
- Optional PC interface
- Optional accessories like brake resistor, mains chokes, mains filters

ENCLOSURE

- IP20 (EN 60529)

OUR GLOBAL PRESENCE

Thanks to an international network of closely interconnected commercial and production sites, we can guarantee the same high standards of Bonfiglioli quality anywhere at any given time. We know that our direct presence in local markets is the key to long-lasting success, so our family includes 18 production sites, 23 commercial sites and more than 550 distributors around the world.

Our organization is always close by, offering complete and efficient solutions and supporting our customers with dedicated services, co-engineering and after-sales assistance.



18

PRODUCTION SITES



23

COMMERCIAL SITES



80

COUNTRIES



550

DISTRIBUTORS



~4,700

PEOPLE

AUSTRALIA

Bonfiglioli Transmission (Aust.) Pty Ltd

2, Cox Place Glendenning NSW 2761
Locked Bag 1000 Plumpton NSW 2761
Tel. +61 2 8811 8000



BRAZIL

Bonfiglioli Redutores do Brasil Ltda

Av. Osvaldo Fregonezi, 171, cjs 31 e 44
CEP 09851-015 - São Bernardo do Campo
São Paulo
Tel. +55 11 4344 2322



CHINA

Bonfiglioli Drives (Shanghai) Co. Ltd.

#68, Hui-Lian Road, QingPu District,
201707 Shanghai
Tel. +86 21 6700 2000



Industry & Automation Solutions

#568, Longpan Road, Jiading District,
201707 Shanghai



Bonfiglioli Trading (Shanghai) Co. Ltd.

Room 423, 4th Floor, #38, Yinglun Road,
China (Shanghai) Pilot Free Trade Zone,
Shanghai



Selcom Electronics (Shanghai) Co., Ltd

A7, No.5399, Waiqingsong Road, QingPu
District,
201707 Shanghai
Tel. +86 21 6010 8100



A24, No.5399, Waiqingsong Road, QingPu
District,
201707 Shanghai

Tel. +86 21 6010 8100



FRANCE

Bonfiglioli Transmission S.A.S.

14 Rue Eugène Pottier
Zone Industrielle de Moimont II
95670 Marly la Ville
Tel. +33 1 34474510



GERMANY

Bonfiglioli Deutschland GmbH

Sperberweg 12 - 41468 Neuss
Tel. +49 0 2131 2988 0



Bonfiglioli Vectron GmbH

Europark Fichtenhain B6 - 47807 Krefeld
Tel. +49 0 2151 8396 0



O&K Antriebstechnik GmbH

Ruhrallee 8-12 - 45525 Hattingen
Tel. +49 0 2324 2050 1



INDIA

Bonfiglioli Transmission Pvt. Ltd.

Mobility & Wind Industries

AC 7 - 11, SIDCO Industrial Estate,
Thirumudivakkam
Kancheepuram - 600132 - Tamil Nadu
Tel. +91 844 844 8649



Industry & Automation Solutions

Survey No. 528/1, Perambakkam High Road
Mannur Village, Sriperumbudur Taluk
Kancheepuram - 602 105 - Tamil Nadu
Tel. +91 844 844 8649



Industry & Automation Solutions

Plot No E-5/2, Badhalwadi
Talegaon MIDC Phase II,
Pune - 410 507 - Maharashtra
Tel. +91 844 844 8649



Bonfiglioli Drive Systems Pvt. Ltd.

Industry & Automation Solutions

No 50, Pappambakkam Road,
Mannur Village, Sriperumbudur Taluk,
Kancheepuram - 602105 - Tamil Nadu
Tel. +91 844 844 8649



ITALY

Bonfiglioli Riduttori S.p.A.

Industry & Automation Solutions

Via Cav. Clementino Bonfiglioli, 1
40012 Calderara di Reno
Tel. +39 051 6473111



Industry & Automation Solutions

Via Sandro Pertini, lotto 7b
20080 Carpiano
Tel. +39 02985081



Industry & Automation Solutions

Via Saliceto, 15 - 40010 Bentivoglio



Mobility & Wind Industries

Via Enrico Mattei, 12 Z.I. Villa Selva
47122 Forlì
Tel. +39 0543 789111



Industry & Automation Solutions

Via Unione, 49 - 38068 Rovereto
Tel. +39 0464 443435/36



Selcom Group S.p.A.

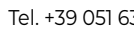
Via Achille Grandi, 5
40013 Castel Maggiore (BO)
Tel. +39 051 6387111



Via Marino Serenari, 18
40013 Castel Maggiore (BO)
Tel. +39 051 6387111



Via Cadriano, 19
40057 Cadriano (BO)
Tel. +39 051 6387111



NEW ZEALAND

Bonfiglioli Transmission (Aust.) Pty Ltd

88 Hastie Avenue, Mangere Bridge,
2022 Auckland
PO Box 11795, Ellerslie
Tel. +64 09 634 6441



SINGAPORE

Bonfiglioli South East Asia Pte Ltd

8 Boon Lay Way, #04-09,
8@Tadehub 21, Singapore 609964
Tel. +65 6268 9869



SLOVAKIA

Bonfiglioli Slovakia s.r.o.

Robotnícka 2129
Považská Bystrica, 01701 Slovakia
Tel. +421 42 430 75 64



SOUTH AFRICA

Bonfiglioli South Africa Pty Ltd.

55 Galaxy Avenue, Linbro Business Park,
Sandton, Johannesburg
2090 South Africa
Tel. +27 11 608 2030



SPAIN

Tecnotrans Bonfiglioli S.A

Avinguda del Ferrocarril, n° 14,
Polígono Industrial Can Estapé
08755 Castellbisbal - Barcelona
Tel. +34 93 447 84 00



TURKEY

Bonfiglioli Turkey Jsc

Atatürk Organize Sanayi Bölgesi,
10007 Sk. No. 30
Atatürk Organize Sanayi Bölgesi,
35620 Çiğli - Izmir
Tel. +90 0 232 328 22 77



UNITED KINGDOM

Bonfiglioli UK Ltd.

Unit 1 Calver Quay, Calver Road, Winwick
Warrington, Cheshire - WA2 8UD
Tel. +44 1925 852667



USA

Bonfiglioli USA Inc.

3541 Hargrave Drive
Hebron, Kentucky 41048
Tel. +1 859 334 3333



VIETNAM

Bonfiglioli Vietnam Ltd.

Lot C-9D-CN My Phuoc Industrial Park 3
Ben Cat - Binh Duong Province
Tel. +84 650 3577411





We have a relentless commitment to excellence, innovation & sustainability. Our team creates, distributes and services world-class power transmission & drive solutions to keep the world in motion.

HEADQUARTERS

Bonfiglioli S.p.A

Via Cav. Clementino Bonfiglioli, 1
40012 Calderara di Reno - Bologna (Italy)
Tel. +39 051 6473111

