

Series GMM

Motor type 406 215

Design Data	
Commutation	Brushed
Direction of rotation	Bi-directional
Bearing type	

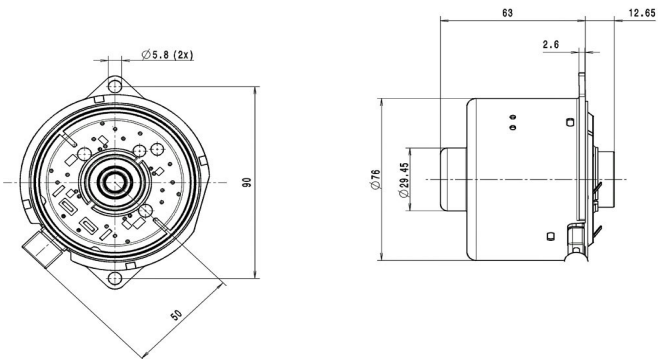
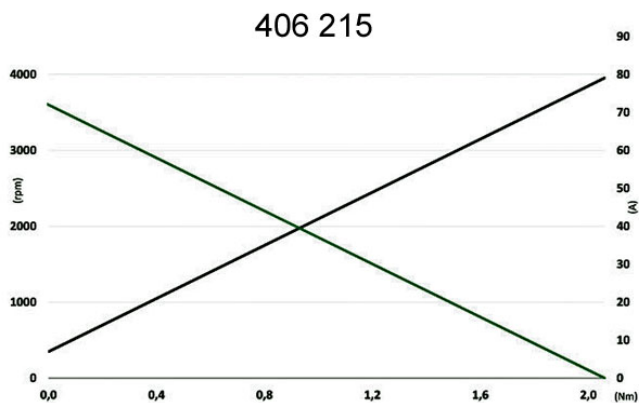
Performance data		
Rated voltage [V]	U_N	12
Max. torque [Nm]	M_N	2.0
No-load speed [min^{-1}]	n_0	5,100.0
Nominal power [W]	P_N	150
Nominal current [A]	I_N	15,0
Max. current [A]	I_m	56,0
Duty cycle		

Sensor data	
Pulses	0
Output channels	0

Other data	
Gear ratio	
Gear wheel material	
Suppression components	
Enclosure class	IP67
Weight [kg]	0.800

Remarks:

Characteristic curves



Motor picture



Output shaft drawing Wiring diagrams Connector layout

