

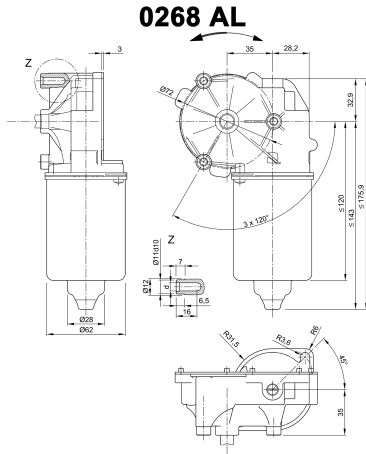
| Design Data | |
|-----------------------|-------------------|
| Commutation | Brushed |
| Direction of rotation | Bi-directional |
| Bearing type | A:Ball - B:Sleeve |

| Performance data | | |
|-------------------------------------|-------|------|
| Rated voltage [V] | U_N | 24 |
| Nominal torque [Nm] | M_N | 6.00 |
| No-load speed [min^{-1}] | n_0 | 60.0 |
| Nominal power [W] | P_N | 29.3 |
| Nominal current [A] | I_N | 7.0 |
| Nominal force [kN] | F_N | 0.00 |
| Duty cycle | s1 | |

| Sensor data | |
|-----------------|---|
| Pulses | 0 |
| Output channels | 0 |

| Other data | |
|------------------------|-------------|
| Gear ratio | 63/1 |
| Gear wheel material | plastic |
| Suppression components | 3,5 μ H |
| Enclosure class | IP 30 |
| Weight [kg] | 1.376 |

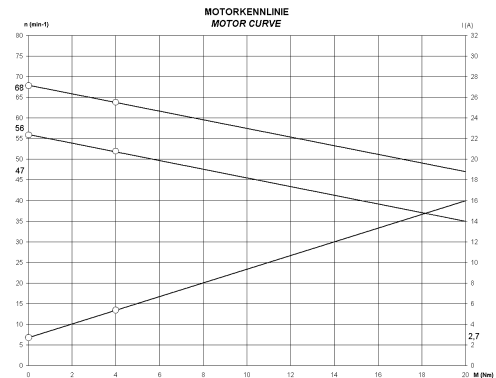
Remarks:



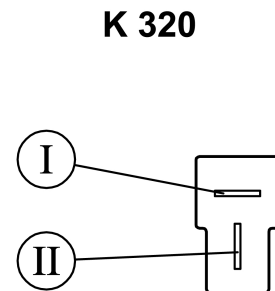
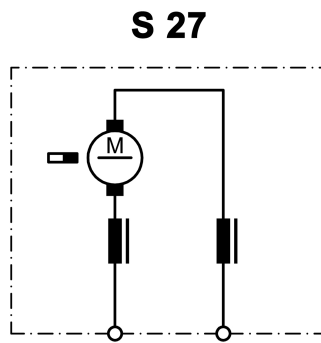
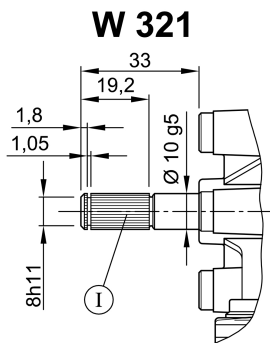
Motor picture



Characteristic curves



Output shaft drawing (W), Wiring diagrams (S) and Connector layout (K)



I serration (rolled): no of teeth 28, pitch circle dia 9 mm, tip circle dia 9.6 mm, root circle dia 8.26 mm space width angle 60°- go/no go gauge Frenco 33906 - www.frenco.de

Flat plug (DIN 46244) 6,3x0,8 mating with receptacle housing part#180907, drwg# C-180907& Receptacles for tabs, conductor cross section 0,5-1,5 sqmm (20-18AWG) part# 925603-x, drwg# 925603 www.tycoelectronics.com

