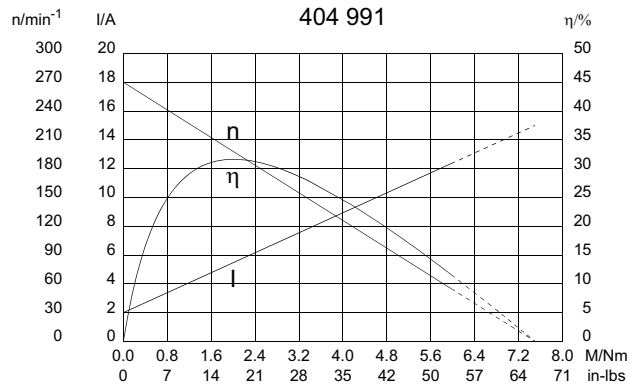
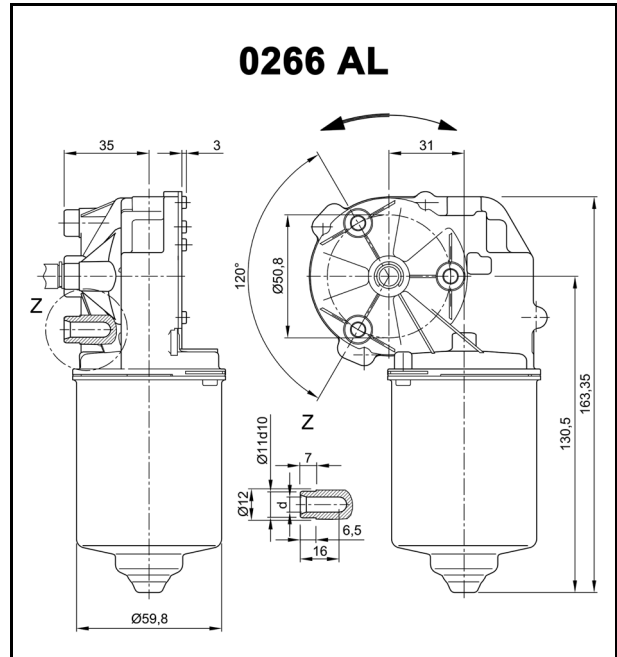
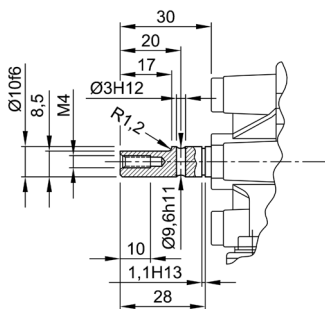


Technical Data

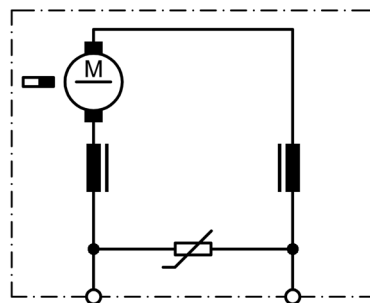
Rated voltage	U_N	[Volt]	24
No-load speed	n_0	[min ⁻¹]	270
Nominal torque	M_N	[Nm]	1,00
ON time		%	
ON		[min]	
Starting torque	M_A	[Nm]	7,50
Gear ratio	i		41/4
Armature resistance, 2 bars	R	[m Ω]	
4 bars	R	[m Ω]	
Armature inductance, 2 bars	L	[mH]	
4 bars	L	[mH]	
Armature load inertia	J_R	[kgm ²] × 10 ⁻⁶	
Gear wheel material		plastic	
Hall IC			X
Pulses/rev. drive shaft			10,25
Output channels			1
Remarks	d = for thread-forming screw M6 DIN ISO 965-2		
Enclosure class			IP 30
Weight		[kg]	1,250



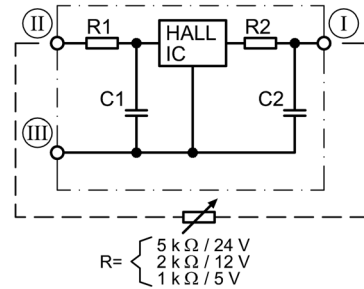
W 40



S 144



S 124

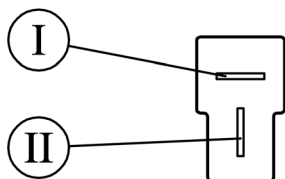


- I Terminal 3, A
- II Terminal 4, +
- III Terminal 5, -

Series 0266 (DCK31)

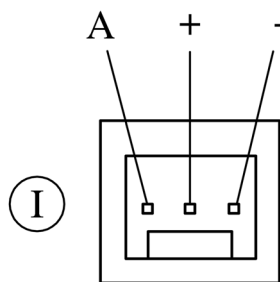
Motor type 404 991

K 320



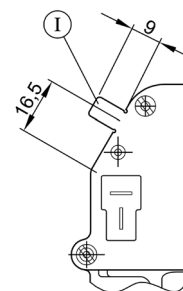
- I Blade terminals 6.3 x 0.8
DIN 46 244
- II Mating connector: Tyco 180907
with sleeve AMP 925603

K 325



- I Mating connector: Panduit CE100 F22 - 03

K 312



- I Ground connection
Blade terminal 6.3 x 0.8 DIN 46 244

Notes: