

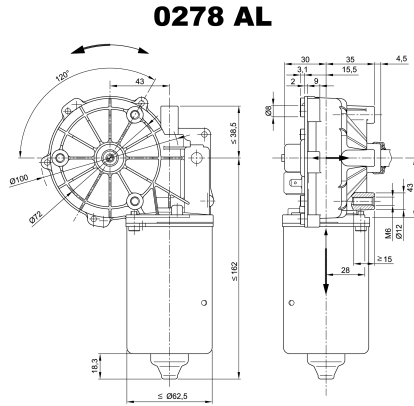
| Design Data | |
|-----------------------|-------------------|
| Commutation | Brushed |
| Direction of rotation | Bi-directional |
| Bearing type | A:Ball - B:Sleeve |

| Performance data | | |
|-------------------------------------|-------|------|
| Rated voltage [V] | U_N | 24 |
| Nominal torque [Nm] | M_N | 6.00 |
| No-load speed [min^{-1}] | n_0 | 48.0 |
| Nominal power [W] | P_N | 21.9 |
| Nominal current [A] | I_N | 4.0 |
| Nominal force [kN] | F_N | 0.00 |
| Duty cycle | s1 | |

| Sensor data | |
|-----------------|----|
| Pulses | 74 |
| Output channels | 1 |

| Other data | |
|------------------------|------------------|
| Gear ratio | 74/1 |
| Gear wheel material | plastic |
| Suppression components | 4,7 μ H, 1nF |
| Enclosure class | IP40 |
| Weight [kg] | 1.730 |

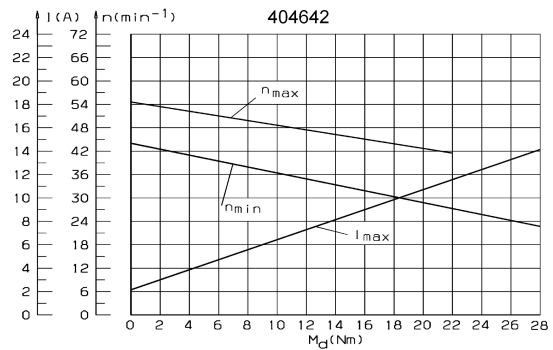
Remarks:



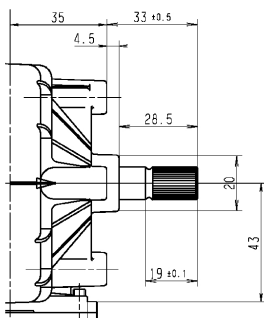
Motor picture



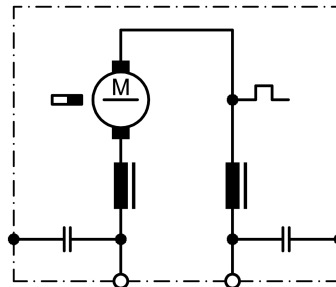
Characteristic curves



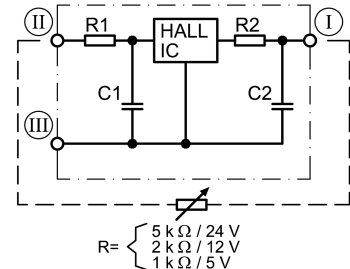
Output shaft drawing (W), Wiring diagrams (S) and Connector layout (K)



S 74



S 124



Splines: 10 x 12f (according to DIN 5481)

I Terminal 3, A
 II Terminal 4, +
 III Terminal 5, -

