

Design Data	
Commutation	brushed
Direction of rotation	bidirectional
Bearing Type	A:Ball - B:Sleeve

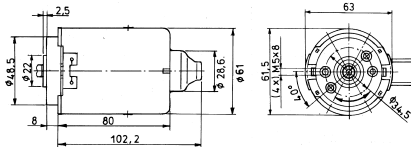
Performance data		
Nominal Voltage [V]	$U_N$	24
Nominal Torque [Nm]	$M_N$	0,12
Nominal Speed [ $\text{min}^{-1}$ ]	$n_N$	3.496
Nominal Power [W]	$P_N$	43,9
Nominal current [A]	$I_N$	3,0
Nominal force [kN]	$F_N$	0,00
Duty cycle	s3	

Sensor data	
Pulses	0
Output channels	0

Other data	
Gear ratio	
Gear wheel material	
Suppression components	5 $\mu$ H, 1nF
Enclosure class	IP 30
Weight [kg]	0,900

Remarks:  
4 start worm

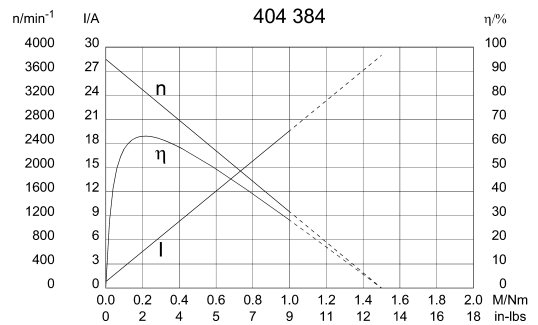
**0272 A**



**Motor picture**

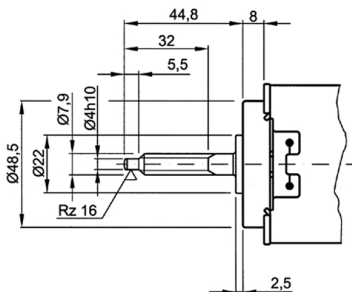


**Characteristic Curves**



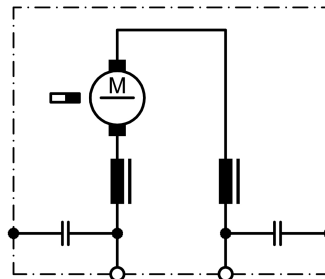
**Output shaft drawing (W), Wiring diagrams (S) and Connector layout (K)**

**W 218**

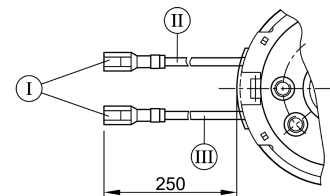


no of starts 4 ,lead angle 30°31'35", pressure angle: 15°, pitch 11.6707 mm (0.459"), module 0,8

**S 30**



**K 189**



I Receptacle for tabs 2,8 x 0,8 DIN 46 247  
II red  
III black