

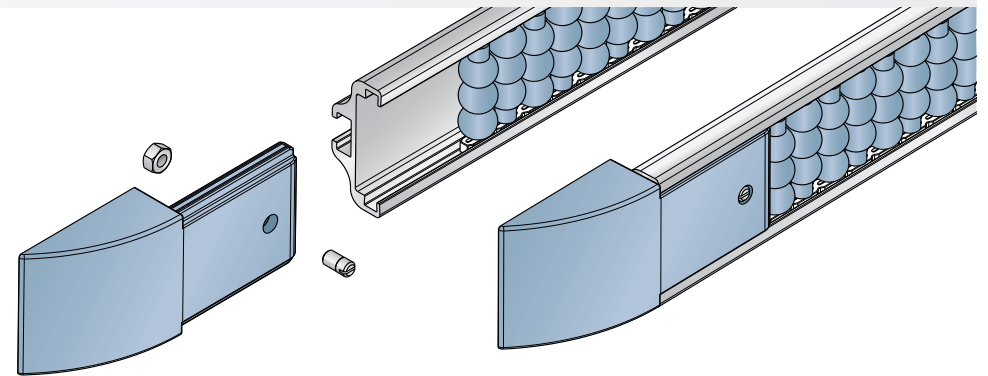
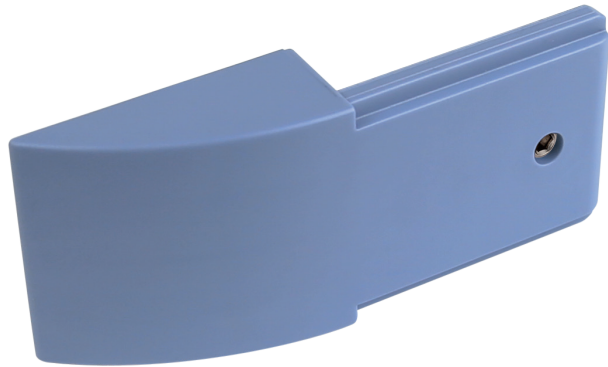
Side and central divider  
***Part. 364/365/366/367***

***Movex***<sup>®</sup>

PRODUCT PRESENTATION

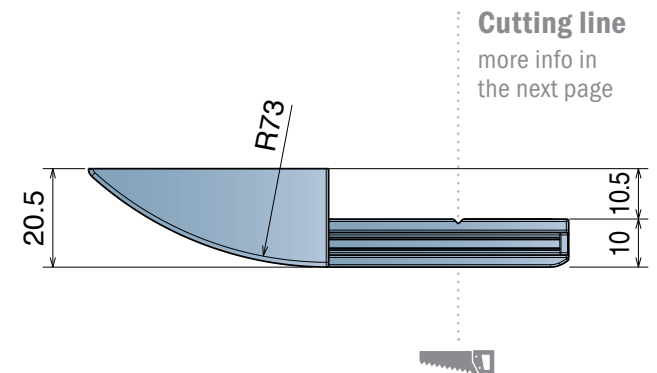
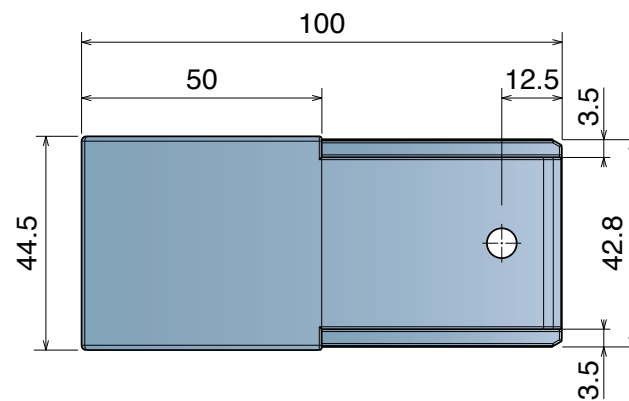
# Part. 364

## SIDE DIVIDER



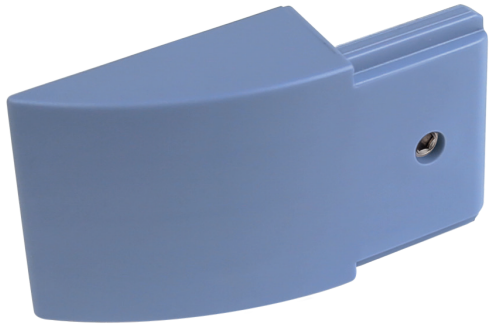
Part	Article-Nr.	Grub Screw
364	36411	M6

**Material:**  
Roller: Acetal resin  
Grub screw: Stainless steel  
Nuts: Zinc plated steel

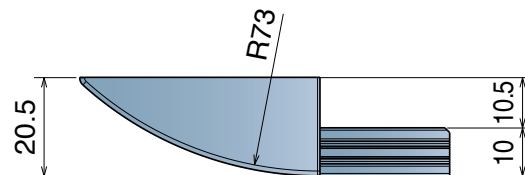
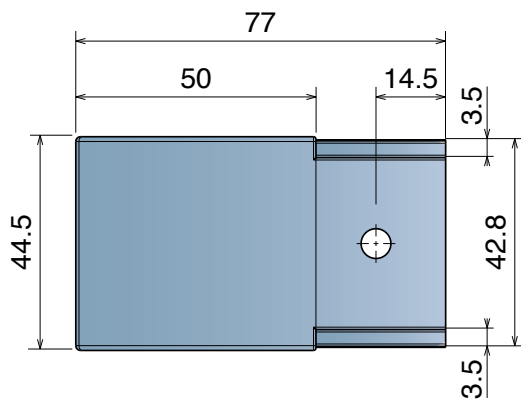


# Part. 364

## SIDE DIVIDER

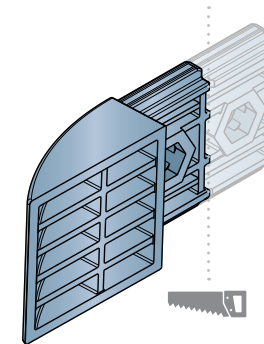


**Part. 364** it is designed to allow the possibility to shorten it, if necessary.



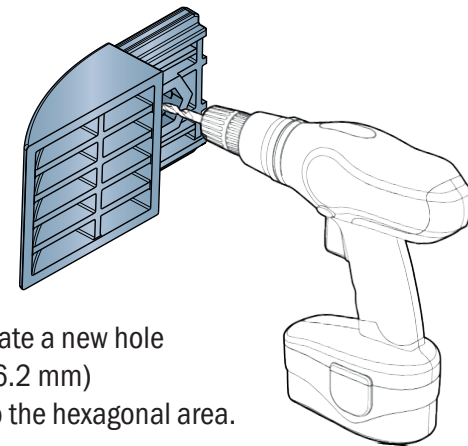
## How to reduce the length?

1



Make a cut across the cutting line.

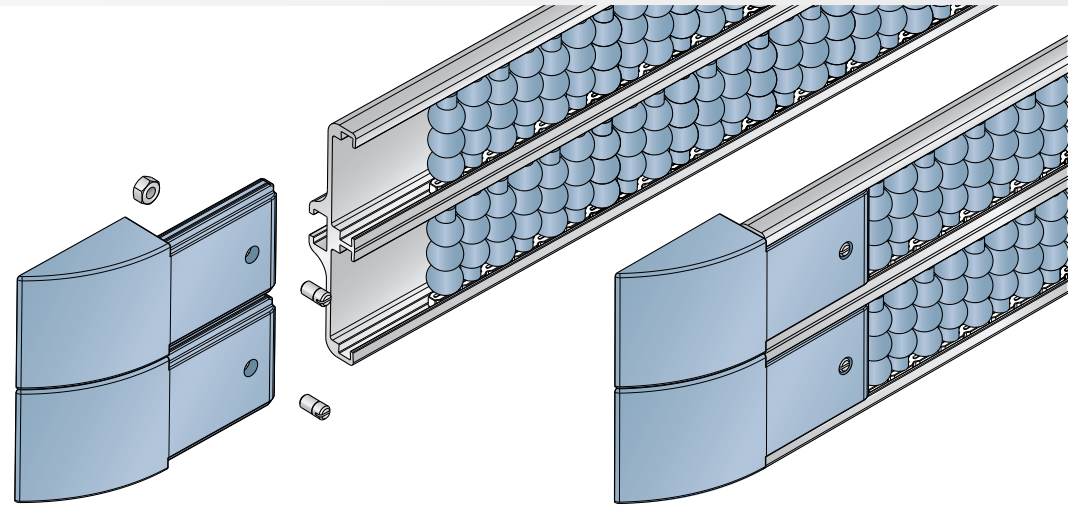
2



Create a new hole (Ø 6.2 mm) into the hexagonal area.

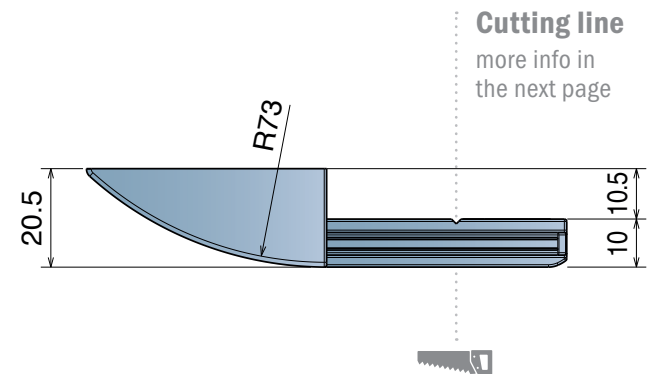
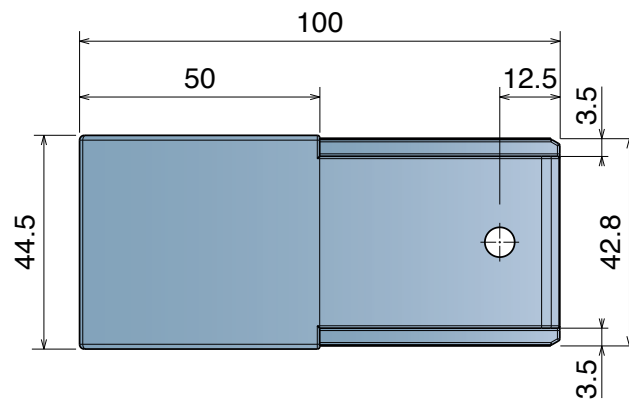
# Part. 365

## DOUBLE SIDE DIVIDER



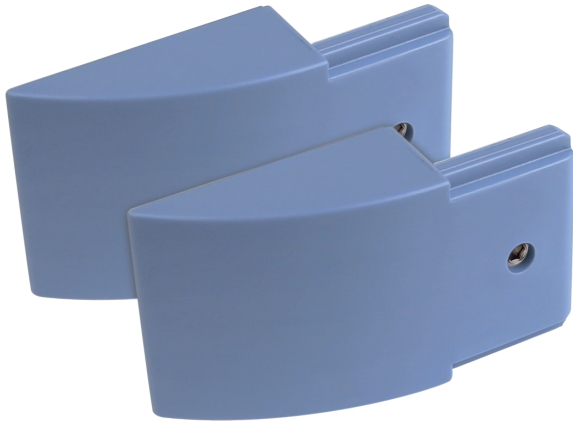
Part	Article-Nr.	Grub Screw
365	36511	M6

**Material:**  
Roller: Acetal resin  
Grub screw: Stainless steel  
Nuts: Zinc plated steel

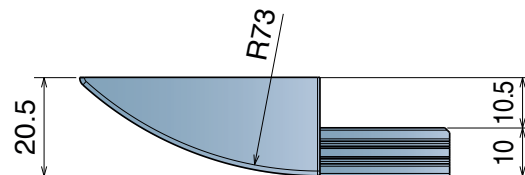
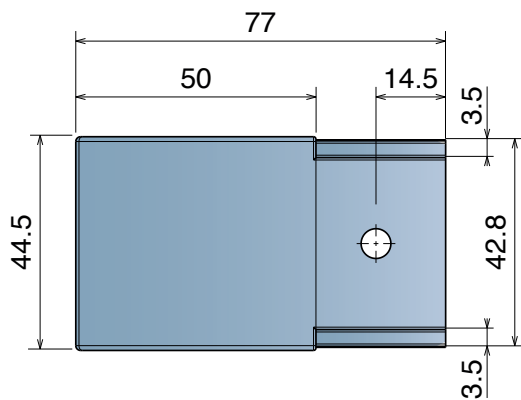


# Part. 365

## DOUBLE SIDE DIVIDER

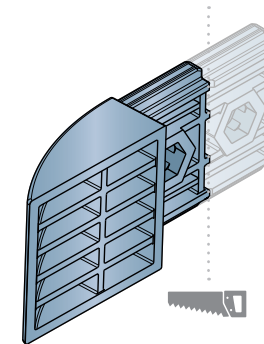


**Part. 365** it is designed to allow the possibility to shorten it, if necessary.



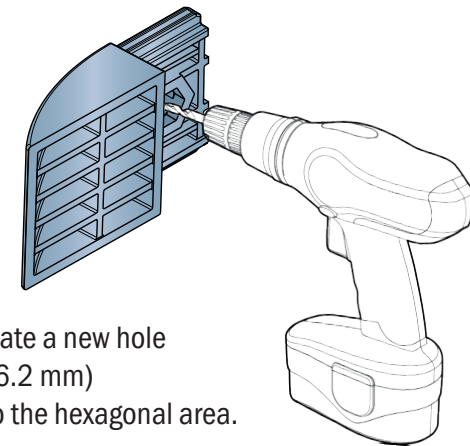
### How to reduce the length?

1



Make a cut across the cutting line.

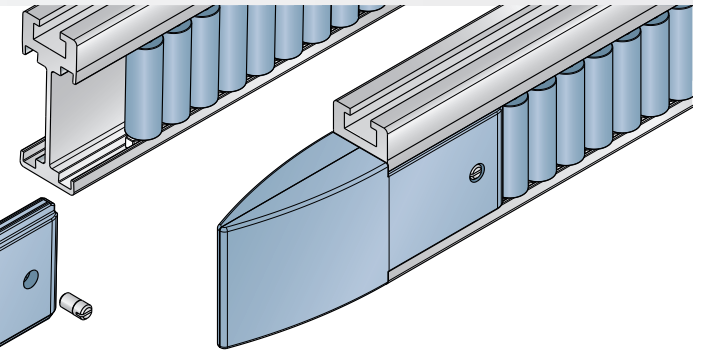
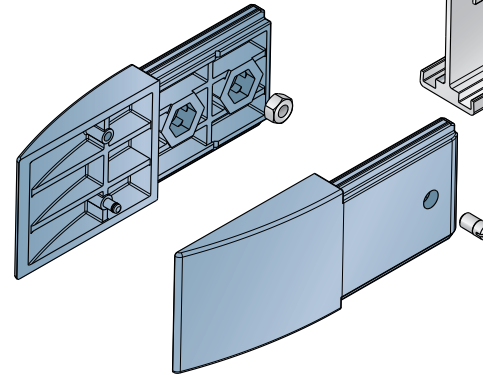
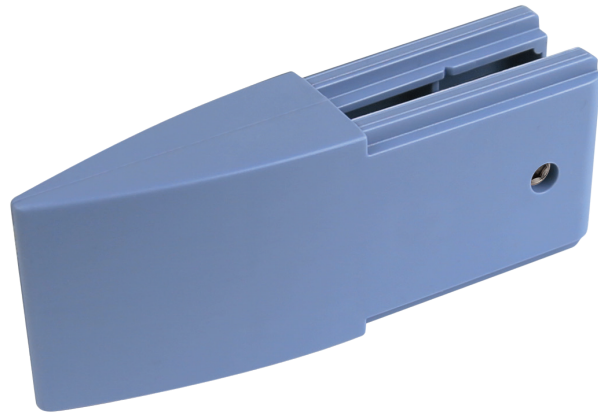
2



Create a new hole (Ø 6.2 mm) into the hexagonal area.

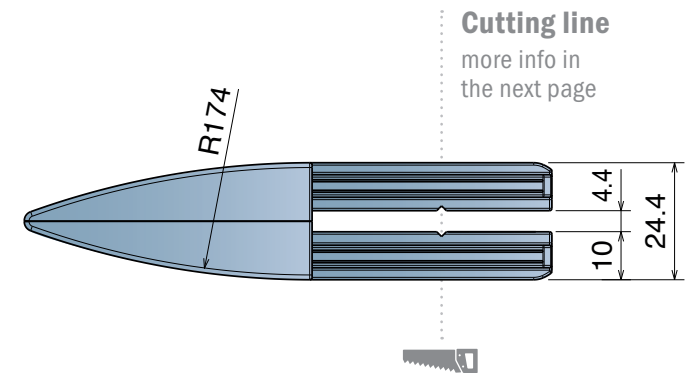
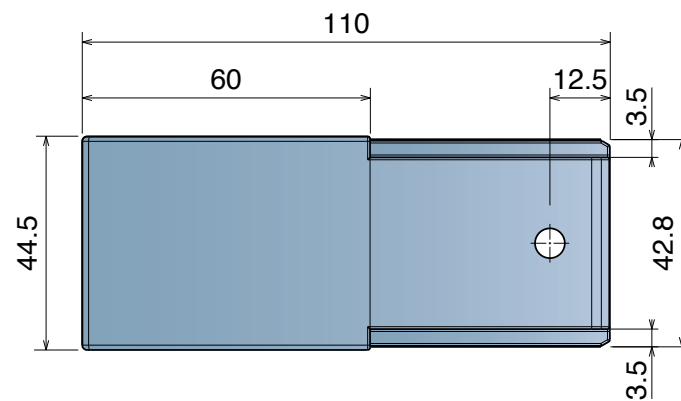
# Part. 366

## CENTRAL DIVIDER



Part	Article-Nr.	Grub Screw
366	36611	M6

**Material:**  
Roller: Acetal resin  
Grub screw: Stainless steel  
Nuts: Zinc plated steel

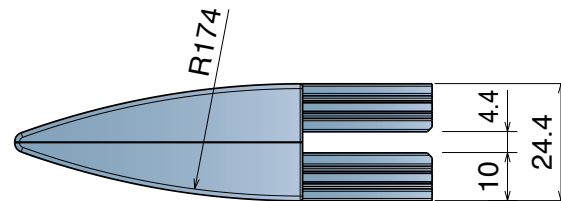
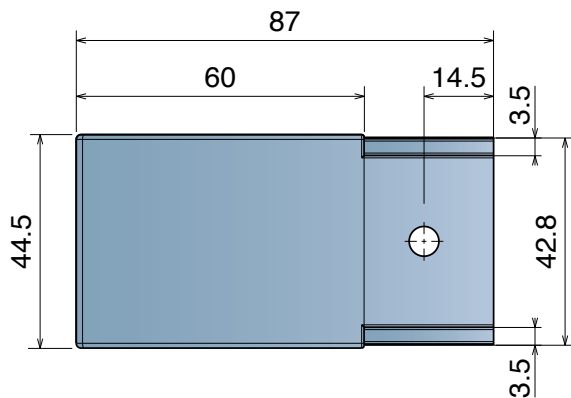


# Part. 366

## CENTRAL DIVIDER

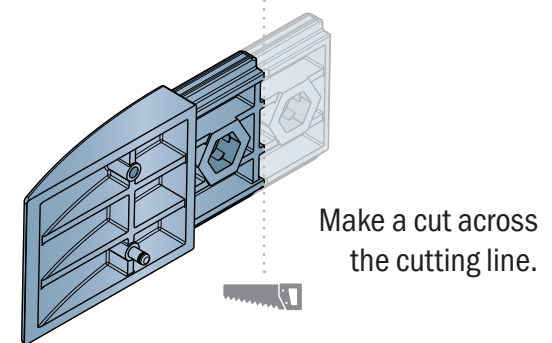


**Part. 366** it is designed to allow the possibility to shorten it, if necessary.

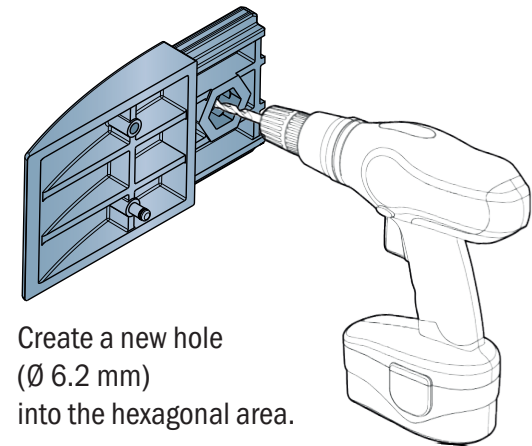


### How to reduce the length?

1



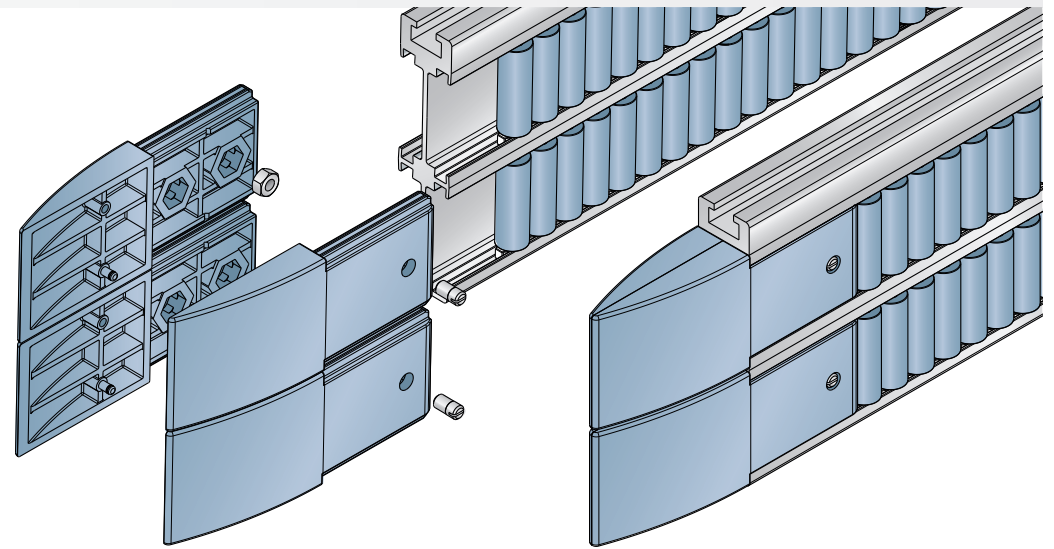
2





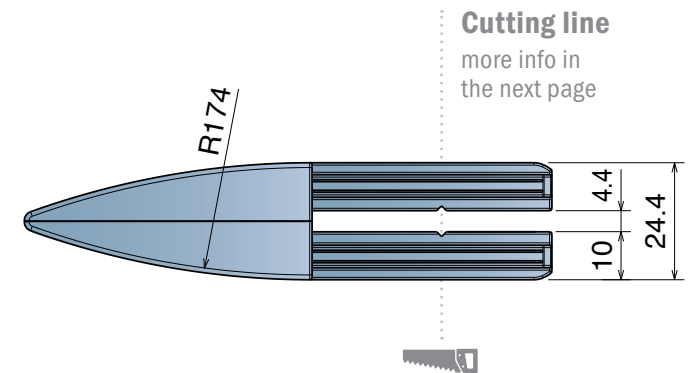
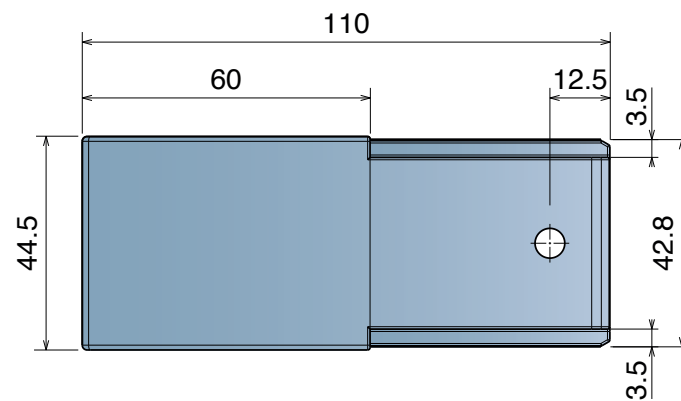
# Part. 367

## DOUBLE CENTRAL DIVIDER



Part	Article-Nr.	Grub Screw
367	36711	M6

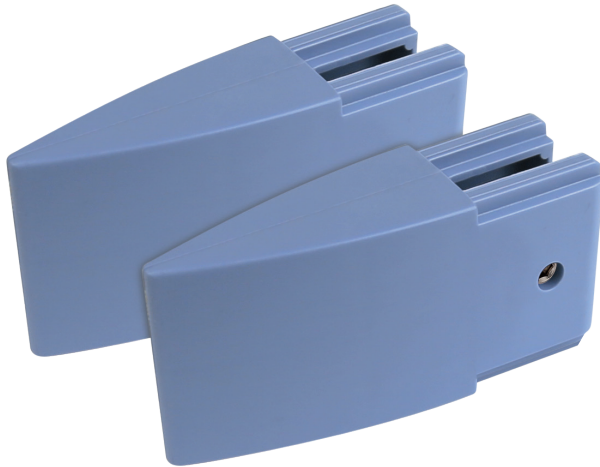
**Material:**  
Roller: Acetal resin  
Grub screw: Stainless steel  
Nuts: Zinc plated steel



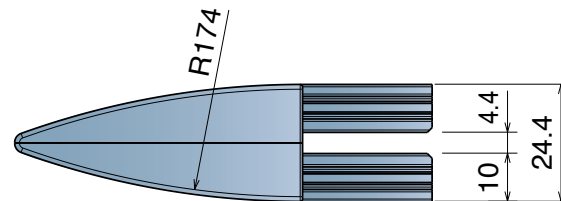
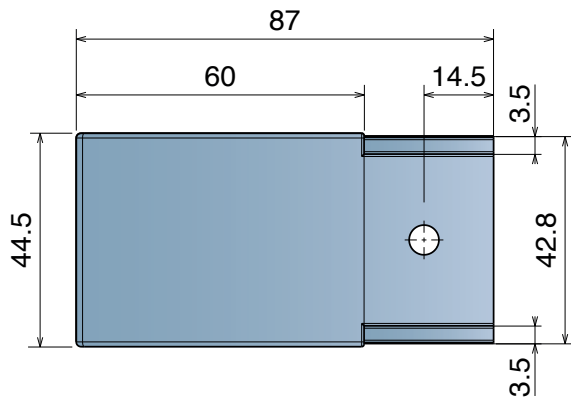


# Part. 367

## DOUBLE CENTRAL DIVIDER

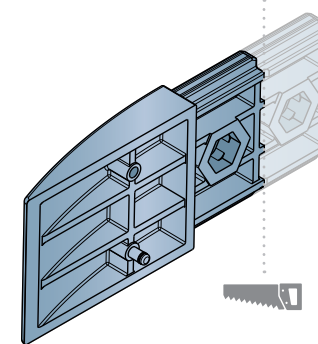


**Part. 367** it is designed to allow the possibility to shorten it, if necessary.



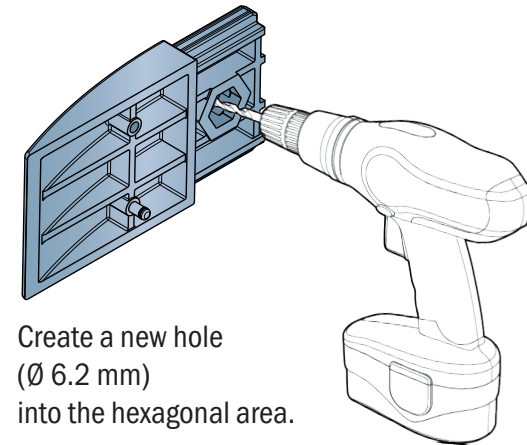
### How to reduce the length?

1



Make a cut across the cutting line.

2



Create a new hole (Ø 6.2 mm) into the hexagonal area.

***Movex***<sup>®</sup>

[www.movexii.com](http://www.movexii.com)

PRODUCT PRESENTATION