

Movex[®]

Plastic Side Flexing Chain

888 Series

Plastic Side Flexing Chain

K80



K80

Chain Material

LF Low friction Acetal Resin.
(This material can be used in all common applications.)

Colour

Brown

Temperature range

-40÷80 °C (dry)
-40°C to 65°C (wet)

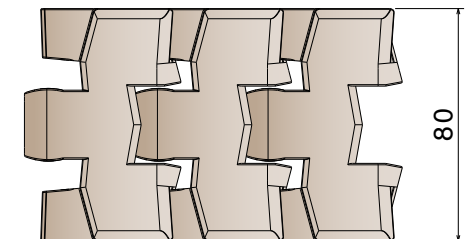
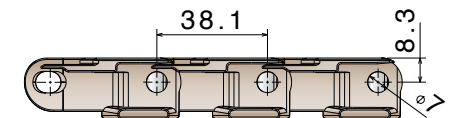
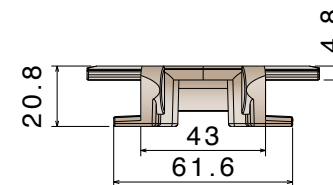
Standard Length

3,048 m

Max. Working load

2100 N/m

Ref.	Width mm	Pitch	Weight kg/m	Radius min.
11700119	80	38,1	1,05	200



Movex[®]

K80

Plastic Side Flexing Chain

K80GT



K80GT

Chain Material

LF Low friction Acetal Resin.
(This material can be used in all common applications.)

Rubber Material

Thermoplastic rubber - 75 ShA

Plate Colour

Brown

Rubber Colour

Dark grey

Temperature range

-40÷80 °C (dry)
-40°C to 65°C (wet)

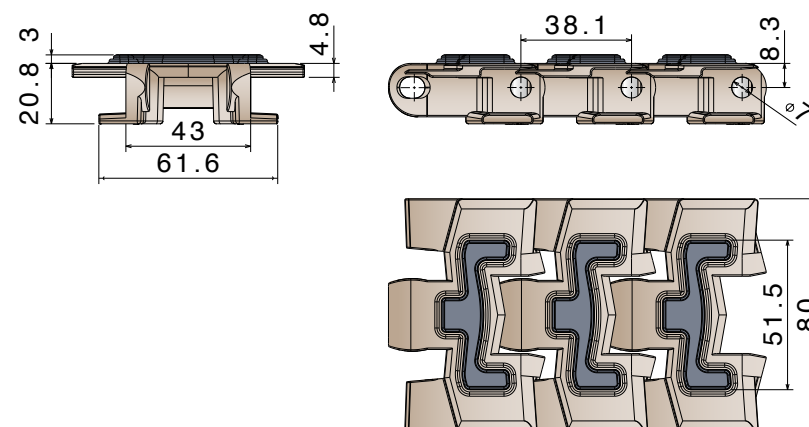
Standard Length

3,048 m

Max. Working load

1800 N/m

Ref.	Width mm	Pitch	Weight kg/m	Radius min.
11710119	80	38,1	1,15	200



Movex®

K80GT

Plastic Side Flexing Chain

K140



K140

Chain Material

LF Low friction Acetal Resin.
(This material can be used in all common applications.)

Colour

Brown

Temperature range

-40÷80 °C (dry)
-40°C to 65°C (wet)

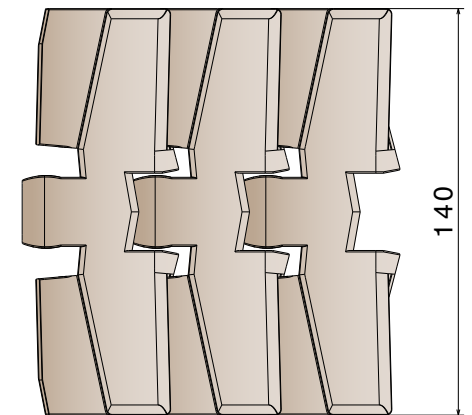
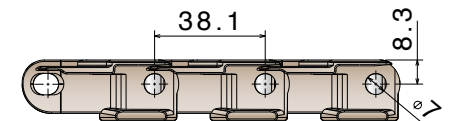
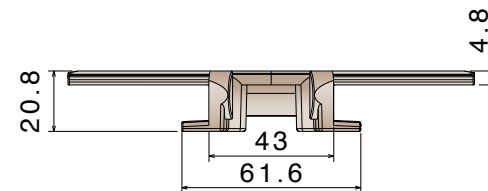
Standard Length

3,048 m

Max. Working load

2100 N/m

Ref.	Width mm	Pitch	Weight kg/m	Radius min.
11700120	140	38,1	1,32	500



Movex[®]

K140

Plastic Side Flexing Chain

K140GT



K140GT

Chain Material

LF Low friction Acetal Resin.
(This material can be used in all common applications.)

Rubber Material

Thermoplastic rubber - 75 ShA

Plate Colour

Brown

Rubber Colour

Dark grey

Temperature range

-40÷80 °C (dry)
-40°C to 65°C (wet)

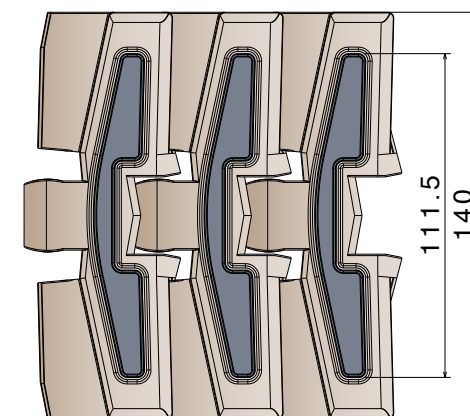
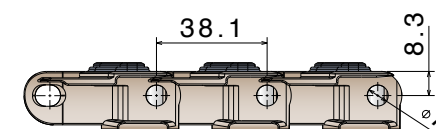
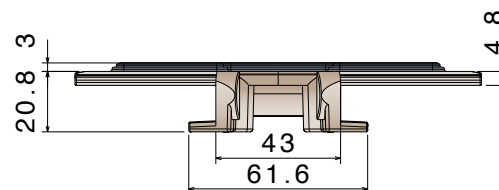
Standard Length

3,048 m

Max. Working load

1800 N/m

Ref.	Width mm	Pitch	Weight kg/m	Radius min.
11710120	140	38,1	1,43	500



Movex[®]

K140GT

Plastic Side Flexing Chain

K200



K200

Chain Material

LF Low friction Acetal Resin.
(This material can be used in all common applications.)

Colour

Brown

Temperature range

-40÷80 °C (dry)
-40°C to 65°C (wet)

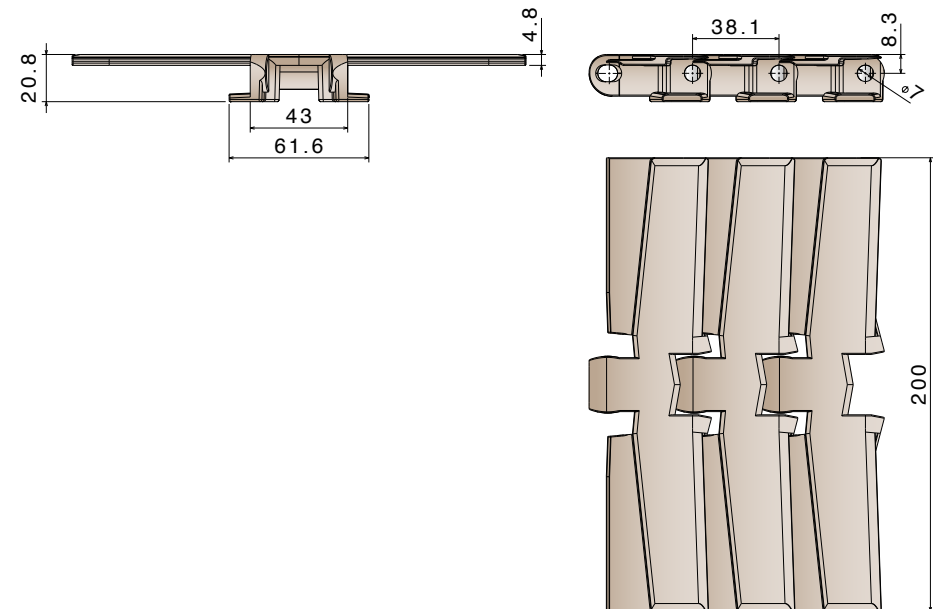
Standard Length

3,048 m

Max. Working load

2100 N/m

Ref.	Width mm	Pitch	Weight kg/m	Radius min.
11700121	200	38,1	1,62	500

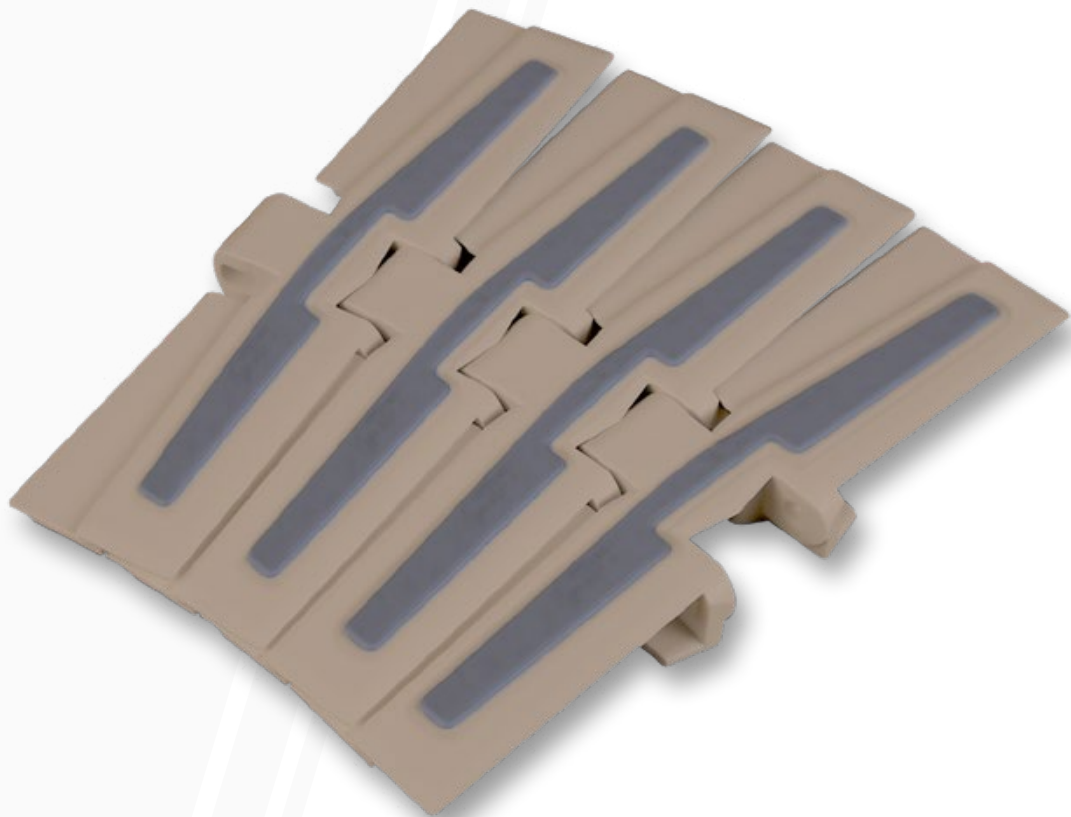


Movex[®]

K200

Plastic Side Flexing Chain

K200GT



K200GT

Chain Material

LF Low friction Acetal Resin.
(This material can be used in all common applications.)

Rubber Material

Thermoplastic rubber - 75 ShA

Plate Colour

Brown

Rubber Colour

Dark grey

Temperature range

-40÷80 °C (dry)
-40°C to 65°C (wet)

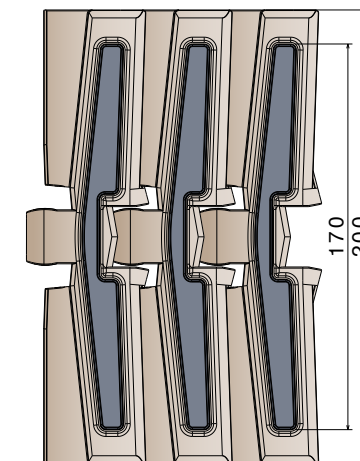
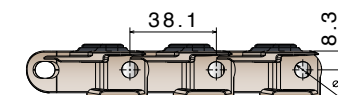
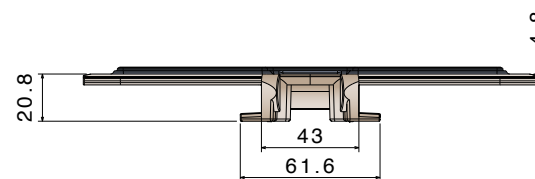
Standard Length

3,048 m

Max. Working load

1800 N/m

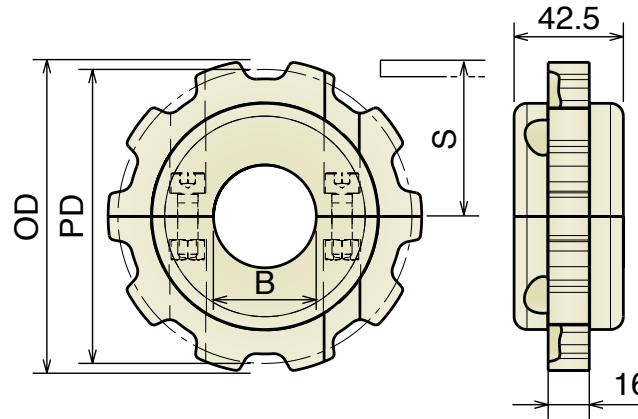
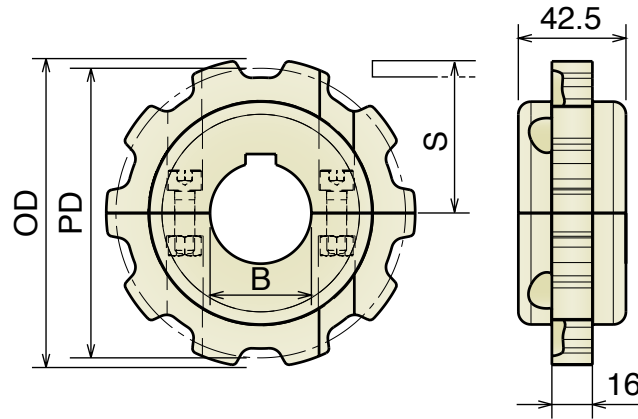
Ref.	Width mm	Pitch	Weight kg/m	Radius min.
11710121	200	38,1	1,75	500



Movex[®]

K200GT

Machined Sprockets



Part	Article-Nr.	Z-	Bore	PD	OD	S
545	54501	9	25	111,4	110,0	59,3
545	54502		30			
545	54503		35			
545	54504		40			
546	54601	10	25	123,3	122,0	65,25
546	54602		30			
546	54603		35			
546	54604		40			
547	54701	11	25	135,2	135,0	71,2
547	54702		30			
547	54703		35			
547	54704		40			
548	54801	12	25	147,2	147,3	77,2
548	54802		30			
548	54803		35			
548	54804		40			

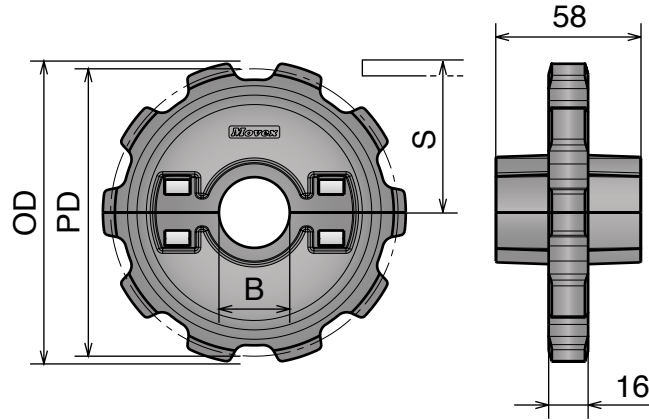
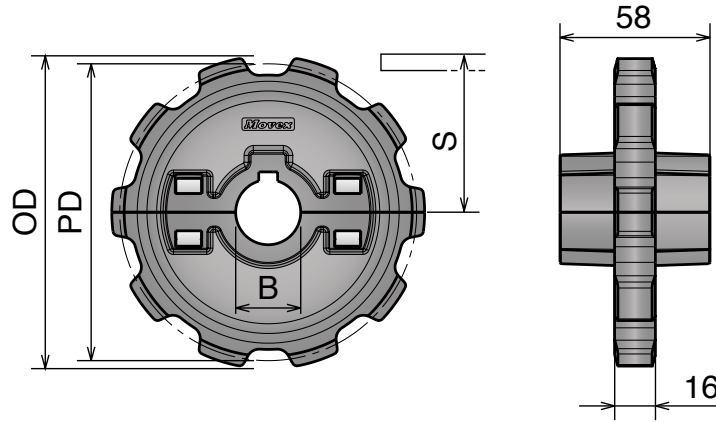
Part	Article-Nr.	Z-	Bore	PD	OD	S
545	54550	9	18*	111,4	110,0	59,3
545	54551		25			
545	54552		30			
545	54553		35			
545	54554		40			
546	54650	10	18*	123,3	122,0	65,25
546	54651		25			
546	54652		30			
546	54653		35			
546	54654		40			
547	54750	11	18*	135,2	135,0	71,2
547	54751		25			
547	54752		30			
547	54753		35			
547	54754		40			
548	54850	12	18*	147,2	147,3	77,2
548	54851		25			
548	54852		30			
548	54853		35			
548	54854		40			

*Plain Bore

Movex[®]

Machined Sprockets

Molded Sprockets



Part	Article-Nr.	Z-	Bore	PD	OD	S
549	54901	10	25	123,3	122,0	65,25
549	54902		30			
549	54903		35			
549	54904		40			
550	55001	12	25	147,2	147,3	77,2
550	55002		30			
550	55003		35			
550	55004		40			

Part	Article-Nr.	Z-	Bore	PD	OD	S
549	54951	10	25	123,3	122,0	65,25
549	54952		30			
549	54953		35			
549	54954		40			
550	55051	12	25	147,2	147,3	77,2
550	55052		30			
550	55053		35			
550	55054		40			

Movex[®]

Molded Sprockets

www.movexii.com
