

520 M

Magnetic Sideflexing Chain-belt 1/2 inch pitch

Magnetic Side-Flexing Chain-Belt 520 M H=8,7 M=85

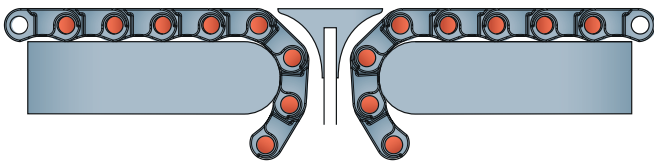
This new chain-belt, offers a perfect solution for side-flexing applications in combination with our 520 Series straight running or our 550 Series straight running belts.

A specific position in a production line where our **520 M** can be used is at the dry end of the line where products are running in lanes, separated by guides.

The 1/2" pitch makes it possible to create smooth in-line transfers which saves floor space and increases the efficiency of the line.

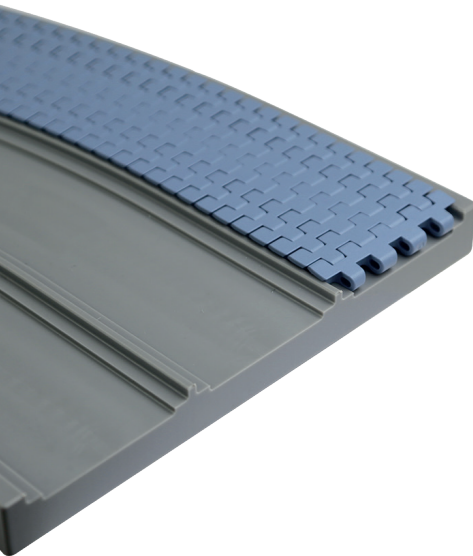


Transfer plate system recommended



Cost savings:

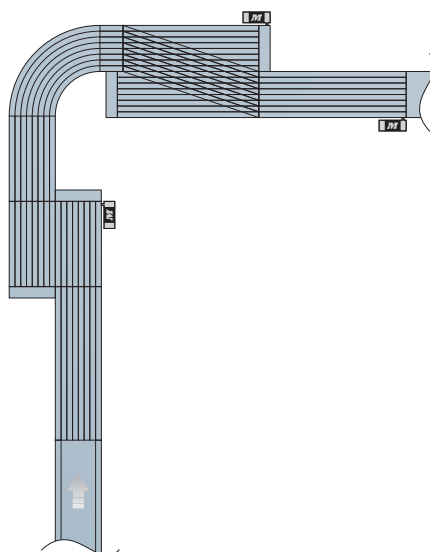
- ▶ Less belt required
- ▶ Less conveyor length required
- ▶ Less guides required
- ▶ Less drives required



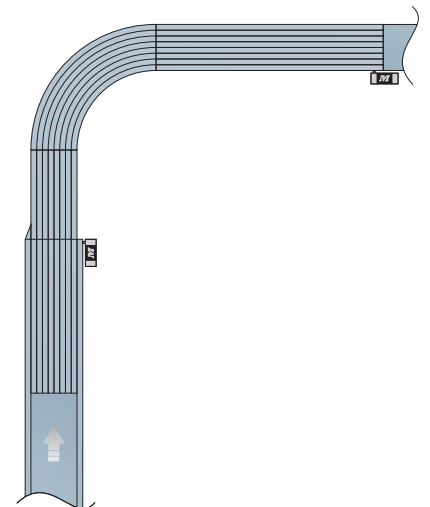
Advantages:

- ▶ No side transfer
- ▶ Space saving

Coventional layout

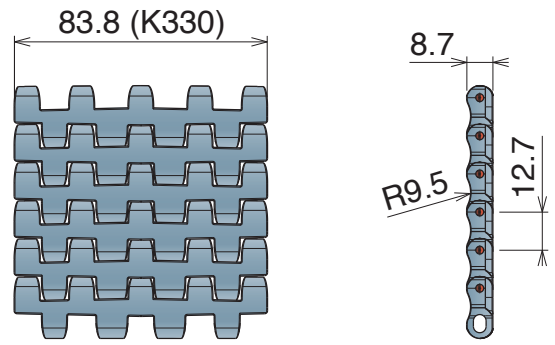


Layout with 520 M K330



Technical features and Product order Code

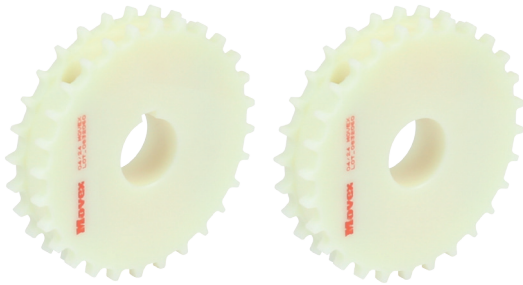
Min. Sideflex radius: 500 mm
Available width: K330 - 83,8 mm
Pitch: 12,7 mm
Thickness: 8,7 mm
Standard Length: 240 links (10 ft - 3,048 mt)
Pin Material: Ferritic Stainless Steel



LFA Low friction Acetal	MX Performance PBT	MP Lubricated Acetal
Article-Nr.	Article-Nr.	Article-Nr.
1193019330	1193039330	1193139330

Sprockets available

Consult our catalogue for details

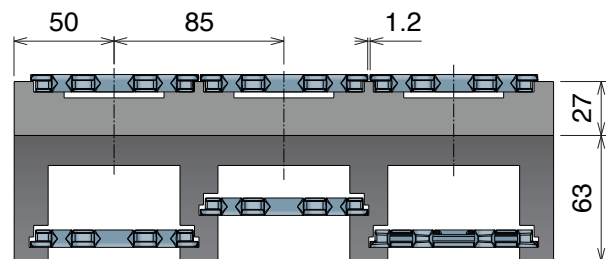
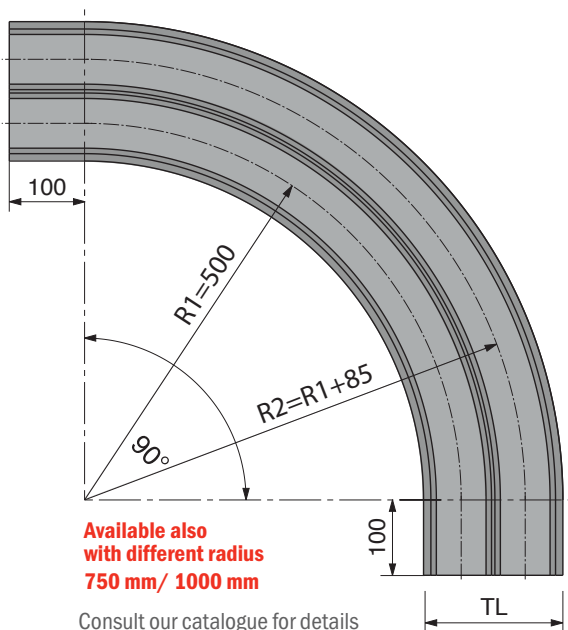


Split idler sprocket, machined



Split idler sprocket, molded

Curves available



Part	Article-Nr.	Tracks	W
750	75011614	1	100
750	75011624	2	185
750	75011634	3	270
750	75011644	4	355
750	75011654	5	440
750	75011664	6	525
750	75011674	7	610
750	75011684	8	695