

700T series

Slew drives



Torque Range: 1000 ... 70.000 Nm

Gear Ratios: 3,4 ... 2000

Key Features

- Flange mounted
- Output shaft: splined or with integral pinion
- Rugged construction
- High torque capacity
- Output shafts supported by heavy duty capacity bearings

Applicable motors

- Cartridge axial piston hydraulic motors
- Flanged axial piston hydraulic motors
- Hydraulic orbit motors
- IEC electric motors

Hydraulic motor options

- Pressure relief valve
- Overcenter valve

Hydraulic Brake

Hydraulically released parking brake on request

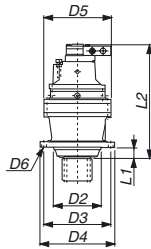
Electric Brake

DC and AC type

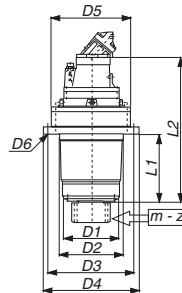
Type	Max. Torque		Range of ratios	Max. input speed	Hydraulic motor drive (1)	Braking torque	Min. opening pressure	Weight	Design
	Excavator	Crane							
	Nm		1:	min-1		Nm	bar	kg	
700 T1 F	1000	1200	3,48-7,2	500	LS	50 - 400	10 - 30	22	A
701 T1 F	1800	2400	3,48-7,2	500	LS	50 - 400	10 - 30	27	A
703 T2 F	2500	3500	12-44	3000	HS	50 - 400	10 - 30	45	A
705 T2 F	5000	6500	12-44	3000	HS	50 - 400	10 - 30	55	A
705 T2 L	5000	6500	12-44	3000	HS	50 - 400	10 - 30	80	B
706 T2 N	7500	10000	15-46	3000	HS	400 - 1000	20 - 30	95	B
707 T2 N	9000	15000	17-47	3000	HS	400 - 1000	20 - 30	140	B
709 T2 N	12000	20000	17-47	3000	HS	400 - 1000	20 - 30	165	B
710 T2 N	18000	30000	19-38	3000	HS	400 - 1000	20 - 30	250	B
711 T2 C	20000	35000	14-39	3000	HS	400 - 1000	20 - 30	300	B
713 T3 N	40000	55000	50-300	3000	HS	400 - 1000	20 - 30	500	B
715 T3 N	70000	80000	57-250	3000	HS	400 - 1000	20 - 30	650	B
711 T2 F	20000		14-39	3000	HS	400 - 1000	20 - 30	160	A

(1) LS = Low speed motor
HS = High speed motor

DESIGN A



DESIGN B



Type	D1	Dimensions							m	z
		D2	D3	D4	D5	D6	L1	L2		
700 T1 F		150	195	220	186	12,5	31	300	Module / number of teeth of pinion UPON REQUEST	
701 T1 F		150	195	220	186	12,5	31	325		
703 T2 F		175	245	272	245	18	41	410		
705 T2 F		175	245	272	245	18	41	440		
705 T2 L	180	195	245	290	245	13	171	470		
706 T2 N	200	250	325	360	292	17	225	560		
707 T2 N	230	280	314	348	345	17	295	670		
709 T2 N	250	280	380	420	345	17	295	720		
710 T2 N	300	425	460	500	400	22	360	730		
711 T2 C	300	425	460	500	428	22	345	735		
713 T3 N	340	400	510	560	445	22	420	1030		
715 T3 N	370	470	600	640	542	22	465	1250		
711 T2 F		320	500	560	425	22	70	750		

HEADQUARTERS

BONFIGLIOLI RIDUTTORI
Via Giovanni XXIII, 7/A
40012 Lippo di Calderara di Reno
Bologna (ITALY)
Tel. (+39) 051 6473111
Fax (+39) 051 6473126
www.bonfiglioli.com

SALES DEPARTMENT

BONFIGLIOLI RIDUTTORI S.p.A.
Via Enrico Mattei, 12 - Z.I. Villa Selva
47100 Forlì (ITALY)
Tel. (+39) 0543 789111
Fax (+39) 0543 789242 - 0543 789245
trasmital@bonfiglioli.com

