



Bonfiglioli Mobile

Solutions for access platforms



Solutions for **access platforms**



Bonfiglioli, the leading manufacturer of planetary drives and gearmotors, within his broad product range makes available dependable wheel and swing drives that are successfully used also on aerial platforms.

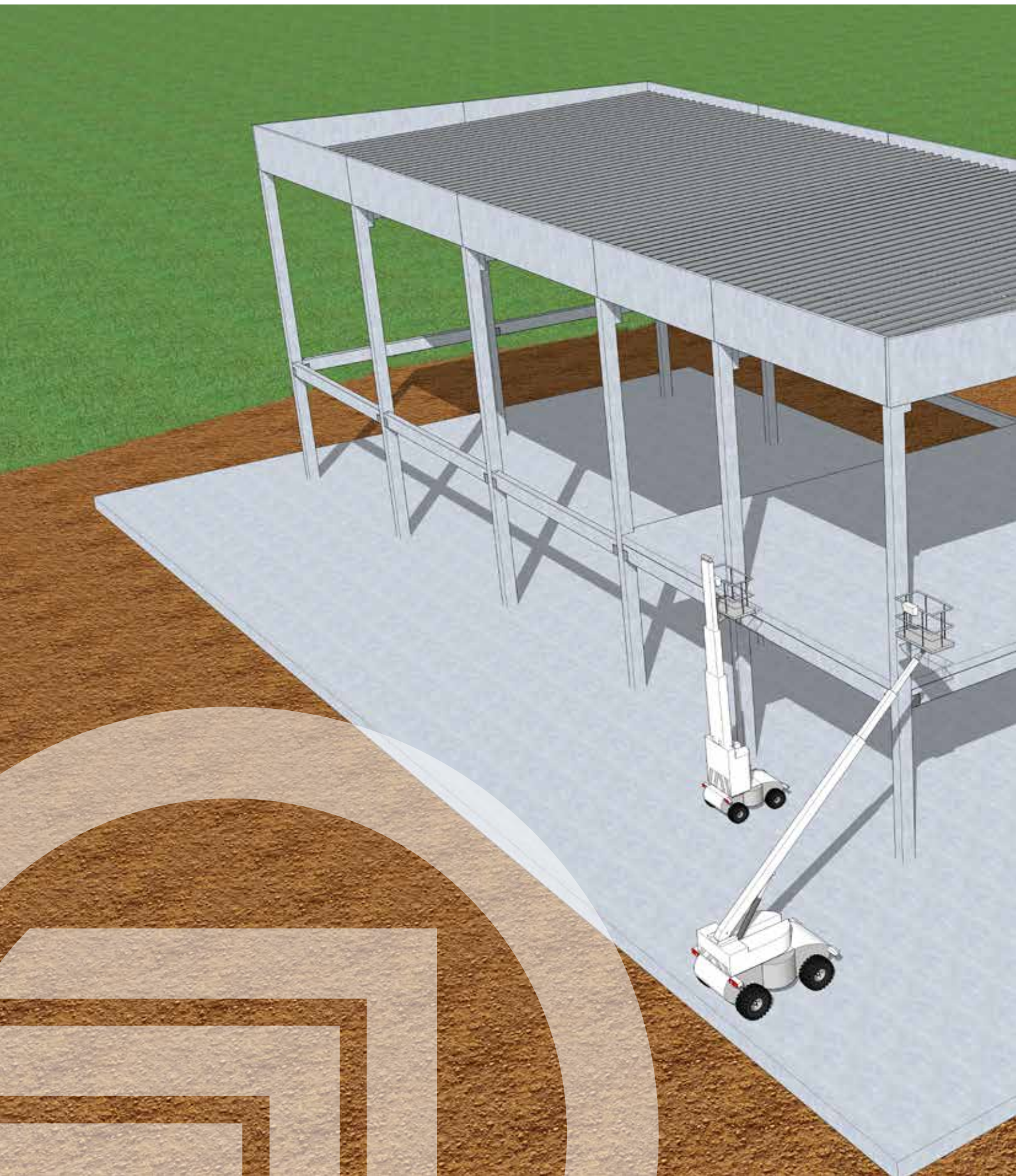
Manufacturers of access platforms, either jib type - telescopic or articulated - or scissors type, will certainly be able to find within the BONFIGLIOLI product range the ideal solution to their drive problems.

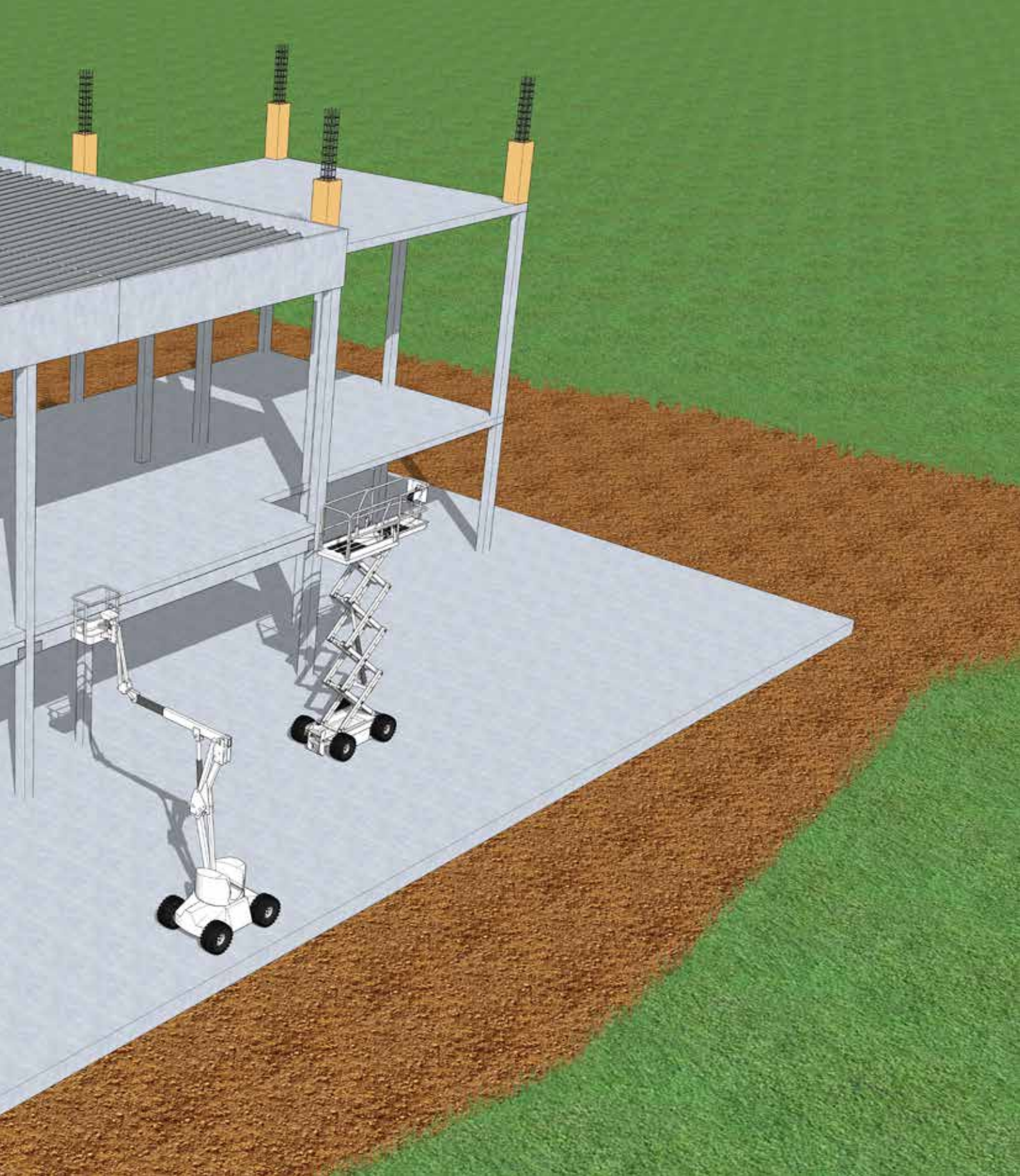
The rugged wheel and swing drives from BONFIGLIOLI offer proven reliability in operation. The compact dimensions facilitate installation, yet without compromising on torque capacity.



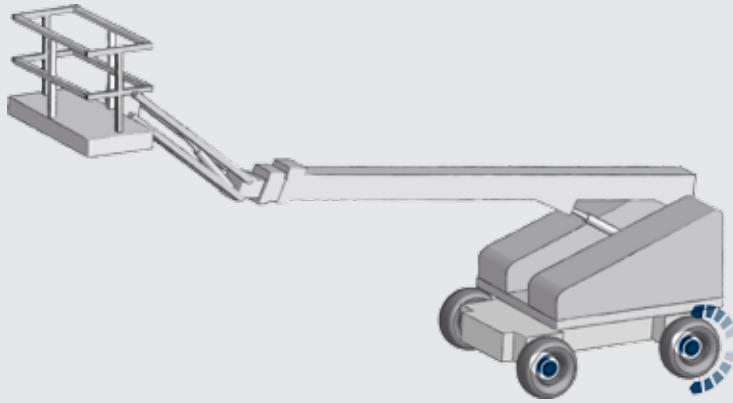
Bonfiglioli access platforms

Drives for access platforms





Benefit from the experience of the leading manufacturer.



600

Wheel drives

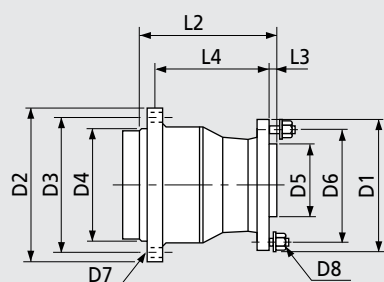
Whether you are designing a wheeled agriculture or construction equipment, the 600 series will offer you the right choice for your vehicle.

A disengagement device to tow the vehicle in an emergency is optionally available.

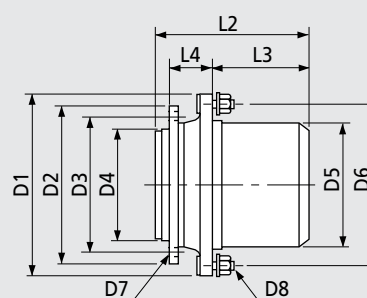
Type	Max torque (Nm)
601R1L	3000
603W2..H	5000
603W2V B	7000
605W2V..	10000
606W..V	18000



TYPE	RATIOS	MAX INPUT SPEED	MAX BRAKE TORQUE AT MOTOR SHAFT (STATIC)	WEIGHT	OIL QUANTITY	ORBITAL HYD. MOTOR	HYDRAULIC PISTON MOTOR	MACHINE TON CLASS
	1:	rpm	Nm	kg	L			ton
601R1	4.26 - 5.77	1000	560	35	0,7	•		5
603W2V H	19.5 - 40.5	4000	210	45	0,5	•	•	8
603W2L H	14 - 40.5	4000	210	45	0,6	•	•	8
603W2V B	21.6 - 53	4000	166	45	1,3		•	8
605W2 H	22.2 - 53	3500	310	60	1	•	•	15
605W2 B	22.2 - 53	3500	300	53	1,4	•		15
606W2	19.7 - 43.8	3500	460	110	2	•	•	20
606W3	68 - 128.6	3500	330	128	1,8		•	20



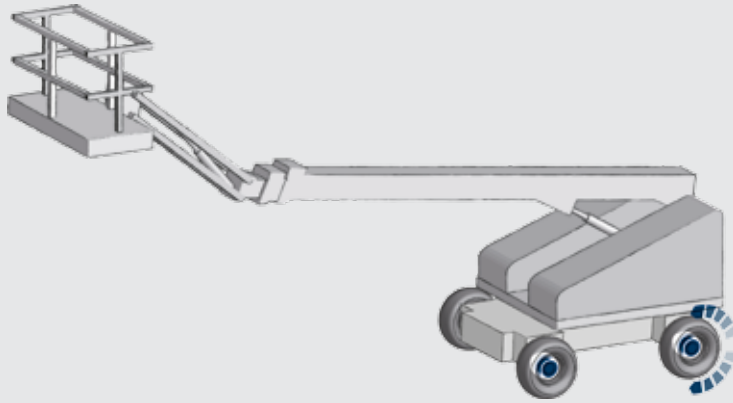
R VERSION



W VERSION

TYPE	L2	L3	L4	D1	D2	D3	D4	D5	D6	D7	D8
601R1L	245	10	195	230	260	230	200 f8	152,4	203,2	Ø15 n°8	M14x1.5 n°8
603W2V H	236	128	72	280	270	230	190 f7	200 h8	241,3	M16x2 n°8	M18x1.5 n°9
603W2L H	249.5	25	175	237	270	230	190 f7	160	205	M16x2 n°8	M18x1.5 n°6
603W2V B	249	108	106	275	240	210	178 h8	200 h8	241,3	M16x2 n°9	M16x1.5 n°9
605W2 H	240	154	72	300	270	230	190 f7	220 h8	260	M16x2 n°8	M16x1.5 n°8
605W2 B	218	136	72	310	260	230	190 f7	220 h8	275	M16x2 n°12	M20x1.5 n°8
606W2	270	155	115	370	330	300	270 h8	280 h8	335	M16x2 n°18	M22x1.5 n°10
606W3	315	200	115	370	330	300	270 h8	280 h8	335	M16x2 n°18	M22x1.5 n°10

Electric solutions for aerial platforms.



600E

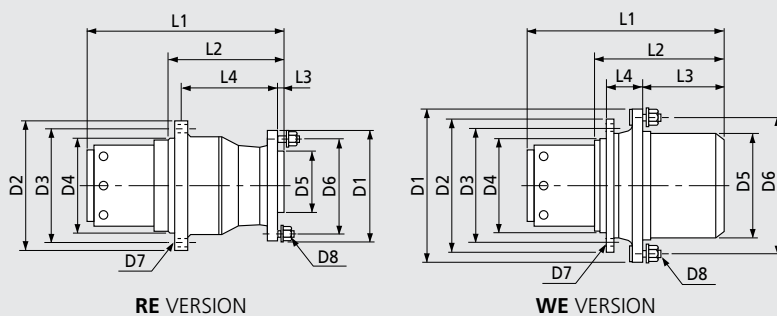
Electric powertrains for aerial platforms

Bonfiglioli's 600E planetary drives incorporate an integrated, maintenance-free electric motor and offer significant benefits in terms of compact dimensions, low noise and high efficiency. 600E Series drives are designed for use with all kinds of aerial platforms, including articulated and telescopic boom types, vertical and scissor lifts with service heights from 5 to 27 metres, for indoor use in tight spaces or outdoor use even on rough ground. This advanced powertrain solution uses a two or three stage gearbox offering reduction ratios of up to 1:145 to satisfy the widest possible range of needs. The gearbox is coupled to a low voltage induction motor (BT Series) specially developed for traction power and control applications.

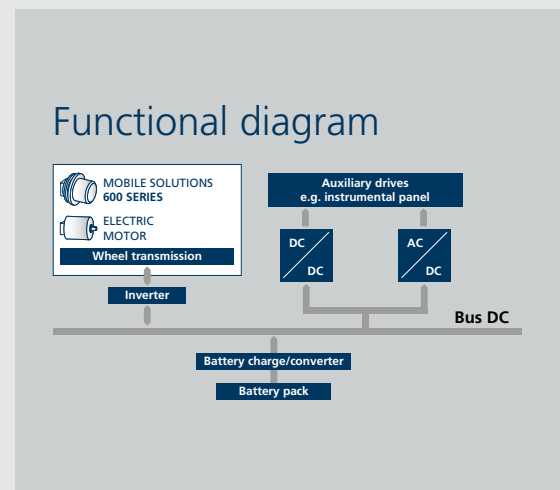
Type	Max deliverable torque (Nm)
600 WE	900
601 RE	3000
602 RE	3500
602 WE	4500
604 WE	7000
605 WE	10000



TYPE	RATIOS	MAX INPUT SPEED	WEIGHT	OIL QUANTITY	AC ELECTRIC MOTOR - SIZE				PARKING BRAKE		MACHINE TON CLASS
					BT135	BT150	BT170	BT200	Electromagnetic	Hydraulic	
	1:	rpm	kg	L							ton
600 WE	48- 58.7	6000	35	0.5	•	•			•		3
601 RE	20.1 - 51.8	4000	40	0.8		•	•		•	•	6
602 RE	20.3 - 30.6	6000	53	0.7		•	•		•	•	9
602 WE	20 - 145	6000	45	0.5		•	•		•	•	9
604 WE	22.2 -53	5000	65	1.1			•	•	•	•	13
605 WE	22.2 - 53	5000	65	1.1			•	•		•	16



TYPE	BT 135-			BT 150-			BT 170-			BT 200-		
	50	100	150	50	100	150	50	100	150	50	100	150
P _n (S2 60') (kW)	0.9	1.6	2.3	1.5	2.5	3.4	2.4	4.3	5.4	3.1	6.2	9.1
T _n (Nm)	3	5.6	8.5	4.8	9.1	12.5	7.7	14	22	10	20	29.5
V _{batt} (V)	24	24	24	24	24	24	48	48	48	80	80	80
I _n (A)	55	95	128	80	130	175	67	110	143	53	98	137
n (rpm)	2930	2927	2632	2894	2617	2610	2945	2952	2357	2957	2963	2958
cosφ	0.77	0.8	0.81	0.85	0.86	0.87	0.77	0.83	0.8	0.77	0.8	0.84
η (%)	86.9	89.5	90.0	85.5	88.7	89.2	88.3	89.6	91.3	88.8	91.6	92.5



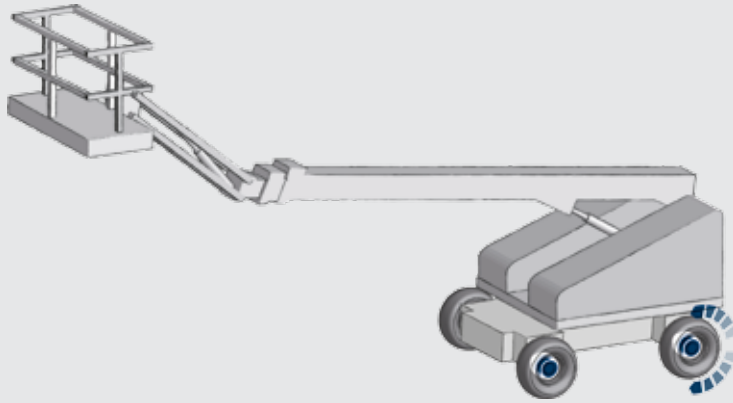
TYPE	L1								L2	L3	L4	D1	D2	D3	D4	D5	D6	D7	D8				
	275	325	375	290	340	390																	
600 WE	275	325	375	290	340	390						134	39	89	240	207.5	190.5	171.45	184.15	216	M8 n°6	M12 n°9	
601 RE					453	503	412	462					247	12	200	189	265	245	225	110	160	Ø13 n°8	M14x1.5 n°8
602 RE						524	434	484	534				269	15	193	210	295	265	235	130	170	M16 n°8	M18 n°6
602 WE						455	375	425	475				210.5	104.5	88	260	271	248	220	200	230	Ø15 n°12	M14 n°9
604 WE								464	514	446	496		231	110	106	315	300	275	250	220	275	M16x2 n°12	M20x1.5 n°8
605 WE									524	456	506	556	241	154	72	315	300	275	250	220	275	M16x2 n°12	M20x1.5 n°8

TYPE	MACHINE WEIGHT (TON)																
	0.5	1	2	3	4	5	6	7	8	9	10	11	12	13	14	15	16
600 WE	0.9 ... 2 kW																
601 RE			1.5 ... 3 kW														
602 RE				3 ... 4 kW													
602 WE				2 ... 4.5 kW													
604 WE									4.5 ... 6 kW								
605 WE														6 ... 9 kW			

Vertical booms																	
Height (m)	5	6.5	8	10													
Scissors lift																	
Height (m)	6.5	7.5	10	11.5	12.5	14	15	18									
Telescopic / Articulated booms																	
Height (m)						11	12	14	15	16	17.5	19	20	21	25	26	27

Benefit from the experience of the leading manufacturer.

NEW



PGW

Wheel drives

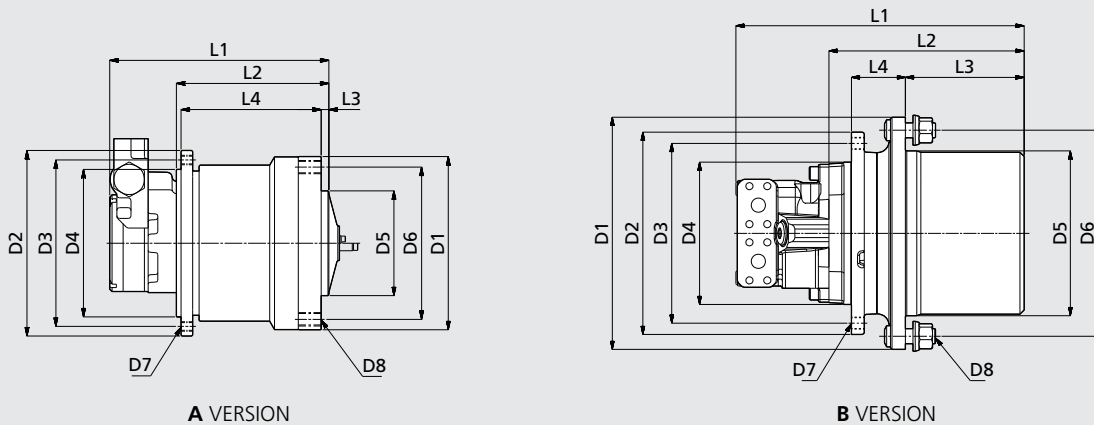
Whether you are designing a wheeled agriculture or construction equipment, the PGW series will offer you the right choice for your vehicle.

A disengagement device to tow the vehicle in an emergency is optionally available.

Type	Torque (Nm)	
PGW 130	1300	
PGW 220	2200	
PGW 401		3500
PGW 402		4000

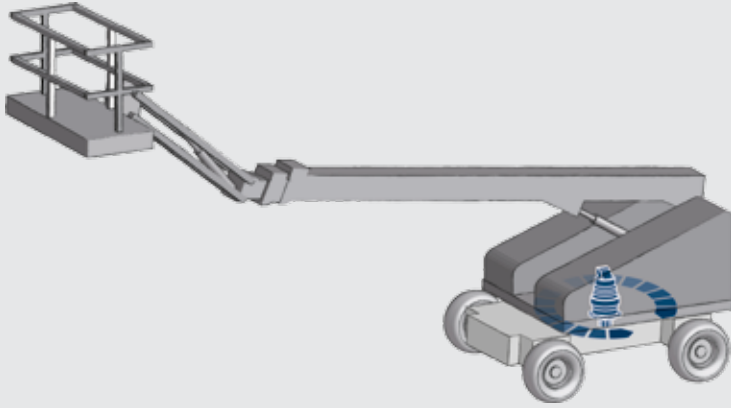


TYPE	RATIOS	MAX INPUT SPEED	MAX BRAKE TORQUE AT MOTOR SHAFT (STATIC)	WEIGHT	OIL QUANTITY	ORBITAL HYD. MOTOR	HYDRAULIC PISTON MOTOR	MACHINE TON CLASS
	1:	min ⁻¹	Nm	kg	L			ton
PGW-PGWF 130	3.28 - 4.26 - 5.75	1500	420 - 750	21	0.3	•		2
PGW-PGWF 220	5.75	1500	750	35	0.5	•		3
PGW-PGWF 401	5.6	1500	500	35	0.8	•		4
PGW-PGWF 402	14.0 - 57.5	3500	330	38	1		•	5



TYPE	D1	D2	D3	D4	D5	D6	D7	D8	L1	L2	L3	L4	VERSION
PGW-PGWF 130	182	195	175	155	110	160	M10x1.5 n°8	M14x1.5 n°5	Depending on motor type	180	8	147	A
PGW-PGWF 220	182	215	185	160	110	160	M14x1.75 n°12	M14x1.5 n°5		210	8	170	A
PGW-PGWF 401	230	260	230	200	152.4	203.2	Ø15 n°8	M14x1.5 n°8		250	15	175	A
PGW-PGWF 402	280	270	230	190	200	245	M16x2 n°8	M16x1.5 n°6		210	120	72	B

Innovations solutions for slew drive.



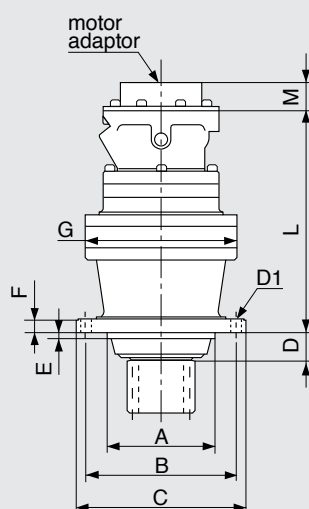
700T Slew drives

The slew drives of the 700T series provide the safest and most effective solution to all the slew drive applications. The 700T units have long been established in the cranes, excavators and special equipment industries, and today are highly appreciated by all the major manufacturers.

Type	Torque (Nm)
700 T F	1200
701 T F	2400
703 T F	3500
705 T F	6500

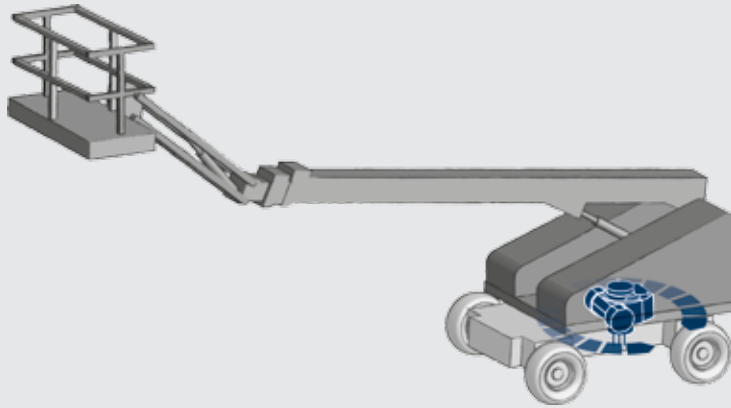


TYPE	RATIOS	MAX INPUT SPEED	MAX BRAKE TORQUE AT MOTOR SHAFT (STATIC)	WEIGHT	OIL QUANTITY	ORBITAL HYD. MOTOR	HYDRAULIC PISTON MOTOR	MACHINE TON CLASS
	1:	rpm	Nm	kg	L			ton
700 T F	3.48 - 7.2	500	400	22	1	•		8
701 T F	3.48 - 7.2	500	400	27	1	•		12
703 T F	3.6 - 44	3000	400	45	1.5	•	•	15
705 T F	12 - 44	3000	400	55	2	•	•	20



TYPE	A	B	C	D	E	F	G	L	D1	M
700 T F	150 f7	195	218	31	7	12	186	230 - 280	ø13 n°10	Depending on motor type
701 T F	150 f7	195	218	31	7	12	186	250 - 300	ø13 n°10	
703 T F	175 f7	245	272	41	9	20	245	300 - 350	ø18 n°10	
705 T F	175 f7	245	272	41	9	20	245	320 - 370	ø18 n°10	

A smart design enhanced by latest materials technology and advanced manufacturing.



Wormgear Slew drives

Wormgears of the VF series are milestones for the industry worldwide.

They succeeded in combining uncompromising quality with state-of-the-art technology and renown price effectiveness.

Torque rating

360 ... 1.500 Nm

Mechanical rating

0.51 ... 3.7 kW

Gear ratios

$i = 30 \dots 64$

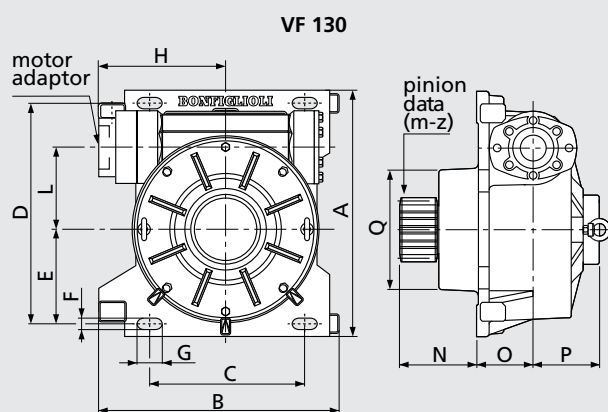
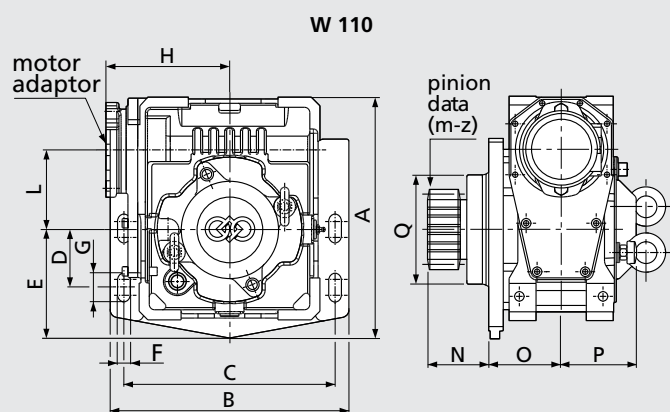
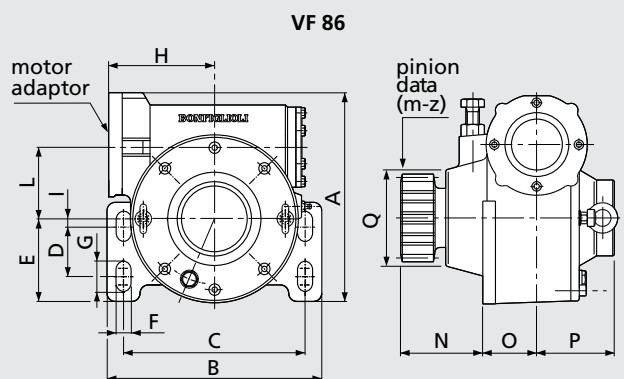
Output configurations

- Integral mounting plate
- Pinion shaft

Input configurations

For Danfoss type OMM-OMP-OMR





TYPE	A	B	C	D	E	F	G	H	I	L	N	O	P	Q
VF 86	247	300	260	60	100	18	38	60	100	18	97	64	92	110
W 110	333	337	292	80	150	18	40	80	150	18	84	99.5	103	150
VF 130	390	325	245	350	175	18	40	350	175	18	122	90	100	200

Pinion data (m-z): on request

Our quality



Sharing the value of our work with you.

The development of effective, tailored solutions for a wide range of applications is a fundamental aspect of our work.

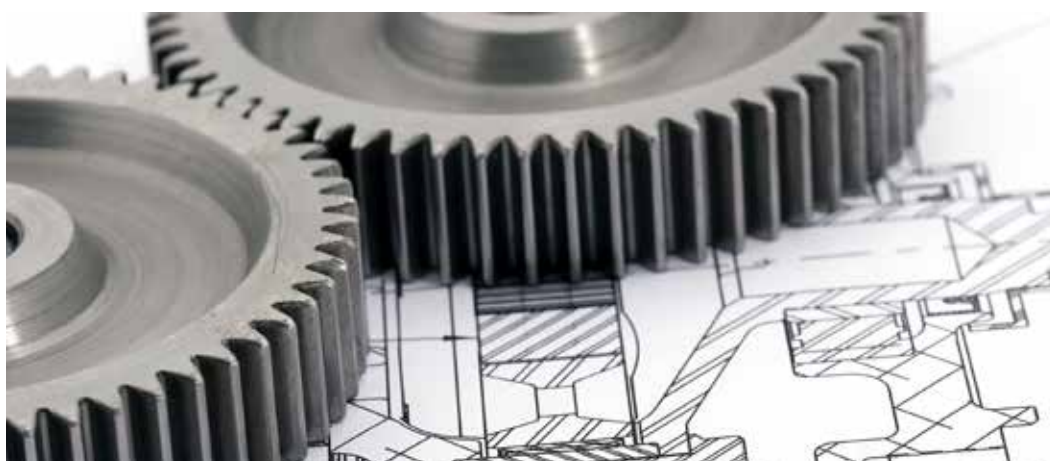
We succeed in this because we co-operate closely with our customers, listen to their requests and work with them to improve our own performance.

Bonfiglioli is determined to deliver the best service possible – before, during and after the sale of any of our products – by applying all our know-how, experience, technology, and advanced communication tools. Bonfiglioli works to the strictest standards of quality and safety, as certified by seven different internationally recognised institutes.

We believe in innovation, and back up this belief by dedicating 100 of our people and 5 activity centres to research and development, and by working hand in hand with some of the world's most prestigious universities.

Our work increasingly brings us into contact with other nations and cultures, for which we have the greatest respect and with whom we share a vision of sustainable development based on renewable energy.

This bond of commitment allows us to be an authoritative and reliable global partner for the present and the future.



Bonfiglioli Worldwide



Headquarters

ITALY • Lippo di Calderara, Bologna



Branches

AUSTRALIA • Sydney
BRAZIL • São Paulo
CANADA • Toronto
CHINA • Shanghai
FRANCE • Paris
GERMANY • Neuss
GERMANY • Krefeld
INDIA • Chennai, Tamil Nadu
INDIA • Mannur, Tamil Nadu
INDIA • Bangalore, Karnataka
ITALY • Milano
ITALY • Rovereto
NEW ZEALAND • Auckland
SOUTH AFRICA • Johannesburg
SINGAPORE • Singapore
SPAIN • Barcelona
TURKEY • Izmir
UNITED KINGDOM • Redditch
UNITED KINGDOM • Warrington
USA • Hebron, Kentucky
VIETNAM • Ho Chi Minh



Production facilities

ITALY • Calderara di Reno, Bologna
 Casting and gearcutting plant
 Assembly HDP, HDO, 300 series
ITALY • Vignola, Modena
 Gearmotor assembly plant
 Precision gearbox manufacturing and assembly plant
ITALY • Forlì
 Planetary gearboxes manufacturing and assembly plant
ITALY • Rovereto, Trento
 Brushless motor and precision gearboxes production
GERMANY • Krefeld
 Inverter plant
SLOVAKIA • Považská Bystrica
 Large gearboxes manufacturing plant
INDIA • Chennai, Tamil Nadu
 Planetary gearbox manufacturing and assembly plant
INDIA • Mannur, Tamil Nadu
 Gearmotors manufacturing and assembly plant
INDIA • Bangalore, Karnataka
 Photovoltaic Inverter assembly
VIETNAM • Ho Chi Minh
 Electric motor plant
CHINA • Shanghai
 Photovoltaic Inverter assembly
BRAZIL • São Paulo
 Planetary gearboxes manufacturing and assembly plant
USA • Hebron, Kentucky
 Planetary gearboxes manufacturing and assembly plant



Resellers

AFRICA • Algeria, Egypt, Kenya, Morocco, South Africa, Tunisia
ASIA • Bahrain, China, Emirates, Japan, Jordan, Hong Kong, India, Indonesia, Iran, Israel, Kuwait, Malaysia, Oman, Pakistan, Philippines, Qatar, Saudi Arabia, Singapore, South Korea, Syria, Thailand, Taiwan, Vietnam
EUROPE • Albania, Austria, Belgium, Bielorrussia, Bulgaria, Cyprus, Croatia, Czech Republic, Denmark, Estonia, Finland, France, Holland, Hungary, Germany, Great Britain, Greece, Ireland, Italy, Lettonia, Lituania, Luxemburg, Malta, Montenegro, Norway, Poland, Portugal, Romania, Russia, Slovakian Republic, Serbia, Slovenia, Spain, Sweden, Switzerland, Turkey, Ucraina
LATIN AMERICA • Argentina, Bolivia, Brasil, Chile, Colombia, Costa Rica, Ecuador, Guatemala, Honduras, Mexico, Peru, Uruguay, Venezuela
NORTH AMERICA • Canada, United States
OCEANIA • Australia, New Zealand

Bonfiglioli worldwide network.

Bonfiglioli Australia

2, Cox Place Glendenning NSW 2761
Locked Bag 1000 Plumpton NSW 2761
Tel. (+ 61) 2 8811 8000 - Fax (+ 61) 2 9675 6605
www.bonfiglioli.com.au

Bonfiglioli Brasil

Travessa Cláudio Armando 171
Bloco 3 - CEP 09861-730 - Bairro Assunção
São Bernardo do Campo - São Paulo
Tel. (+55) 11 4344 2323 - Fax (+55) 11 4344 2322
www.bonfigliolidobrasil.com.br

Bonfiglioli Canada

2-7941 Jane Street - Concord, Ontario L4K 4L6
Tel. (+1) 905 7384466 - Fax (+1) 905 7389833
www.bonfigliolicanada.com

Bonfiglioli China

Bonfiglioli Drives (Shanghai) Co., Ltd.
#68, Hui-Lian Road, QingPu District,
Shanghai, China, 201707
Ph. (+86) 21 6700 2000 - Fax (+86) 21 6700 2100
www.bonfiglioli.cn

Bonfiglioli Deutschland

Industrial, Mobile, Wind
Sperberweg 12 - 41468 Neuss
Tel. +49 (0) 2131 2988 0 - Fax +49 (0) 2131 2988 100
www.bonfiglioli.de

Industrial, Photovoltaic

Europark Fichtenhain B6 - 47807 Krefeld
Tel. +49 (0) 2151 8396 0 - Fax +49 (0) 2151 8396 999
www.vecatron.net

Bonfiglioli España

Industrial, Mobile, Wind
Tecnotrans Bonfiglioli S.A.
Pol. Ind. Zona Franca sector C, calle F, nº6
08040 Barcelona
Tel. (+34) 93 4478400 - Fax (+34) 93 3360402
www.tecnotrans.bonfiglioli.com

Bonfiglioli France

14 Rue Eugène Pottier
Zone Industrielle de Moimont II - 95670 Marly la Ville
Tel. (+33) 1 34474510 - Fax (+33) 1 34688800
www.bonfiglioli.fr

Bonfiglioli India

Industrial
Bonfiglioli Transmission PVT Ltd.
Survey No. 528, Perambakkam High Road
Mannur Village, Sriperambudur Taluk,
Chennai - 602105, Tamil Nadu
Tel. +91(0) 44 6710 3800 - Fax +91(0) 44 6710 3999
www.bonfiglioli.in

Mobile, Wind

Bonfiglioli Transmission PVT Ltd.
PLOT AC7-AC11 Sidco Industrial Estate
Thirumudivakkam - Chennai 600 044
Tel. +91(0) 44 24781035 - 24781036 - 24781037
Fax +91(0) 44 24780091 - 24781904
www.bonfiglioli.in

Photovoltaic

Bonfiglioli Renewable Power Conversion India (P) Ltd
No. 543, 14th Cross, 4th Phase,
Peenya Industrial Area, Bangalore - 560 058
Tel. +91 80 2836 1014/15 - Fax +91 80 2836 1016
www.bonfiglioli.in

Bonfiglioli Italia

Industrial, Photovoltaic

Via Sandro Pertini lotto 7b - 20080 Carpiano (Milano)
Tel. (+39) 02 985081 - Fax (+39) 02 985085817
www.bonfiglioli.it

Bonfiglioli Mechatronic Research

Via F. Zeni 8 - 38068 Rovereto (Trento)
Tel. (+39) 0464 443435/36 - Fax (+39) 0464 443439
www.bonfiglioli.it

Bonfiglioli New Zealand

88 Hastie Avenue, Mangere Bridge, Auckland
2022, New Zealand - PO Box 11795, Ellerslie
Tel. (+64) 09 634 6441 - Fax (+64) 09 634 6445
www.bonfiglioli.co.nz

Bonfiglioli South East Asia

24 Pioneer Crescent #02-08
West Park Bizcentral - Singapore, 628557
Tel. (+65) 6268 9869 - Fax. (+65) 6268 9179
www.bonfiglioli.com

Bonfiglioli South Africa

55 Galaxy Avenue,
Linbro Business Park - Sandton
Tel. (+27) 11 608 2030 OR - Fax (+27) 11 608 2631
www.bonfiglioli.co.za

Bonfiglioli Türkiye

Atatürk Organize Sanayi Bölgesi,
10007 Sk. No. 30 Atatürk Organize Sanayi Bölgesi,
35620 Çiğli - Izmir
Tel. +90 (0) 232 328 22 77 (pbx)
Fax +90 (0) 232 328 04 14
www.bonfiglioli.com.tr

Bonfiglioli United Kingdom

Industrial, Photovoltaic

Unit 7, Colemeadow Road
North Moons Moat - Redditch,
Worcestershire B98 9PB
Tel. (+44) 1527 65022 - Fax (+44) 1527 61995
www.bonfiglioli.co.uk

Mobile, Wind

3 - 7 Grosvenor Grange, Woolston
Warrington - Cheshire WA1 4SF
Tel. (+44) 1925 852667 - Fax (+44) 1925 852668
www.bonfiglioli.co.uk

Bonfiglioli USA

3541 Hargrave Drive Hebron, Kentucky 41048
Tel. (+1) 859 334 3333 - Fax (+1) 859 334 8888
www.bonfiglioliusa.com

Bonfiglioli Vietnam

Lot C-9D-CN My Phuoc Industrial Park 3
Ben Cat - Binh Duong Province
Tel. (+84) 650 3577411 - Fax (+84) 650 3577422
www.bonfiglioli.vn



Bonfiglioli has been designing and developing innovative and reliable power transmission and control solutions for industry, mobile machinery and renewable energy applications since 1956.

HEADQUARTERS

Bonfiglioli Riduttori S.p.A.
Via Giovanni XXIII, 7/A
40012 Lippo di Calderara di Reno
Bologna (Italy)

tel: +39 051 647 3111
fax: +39 051 647 3126
bonfiglioli@bonfiglioli.com
www.bonfiglioli.com

TR_CAT_APMA_STD_ENG_R01_1

