



700CK series Track drive gearmotors

Integrated design will result into the best possible product combination.

Extreme compactness, lightweight, efficiency and smooth operation are the key features of the 700CK series track drives, powered by integrated

axial piston hydraulic motors, developed in cooperation with KAYABA. Available for machines in the 1.5 to 100 Ton class range.



Type	Torque [Nm]
700 C2 K	1200
700-2C2 K	1900
701 C2 K	2500
702 C2 K	3500
704 C2 K	5000
705 C2 K	9000
706 C3 K	18000
707 C3 K	26000
709 C3 K	30000
710 C3 K	36000
713 C2 K	45000
713 C3 K	60000
715 C3 K	85000
716 C3 K	100000
718 C3 K	180000
720 C3 K	220000



Torque Range

1200 ... 220000 Nm

Machine weight

1.5 up 100 Ton

Gear Ratios

20 ... 120

Key Features

Rotating output flange with large PCD suitable for sprocket;
Rugged design; High torque capacity; High load capacity; Mechanical lifetime seals; Compact design

Hydraulic motors

KAYABA hydraulic motors, fixed and dual displacement, complete with counterbalance valve.

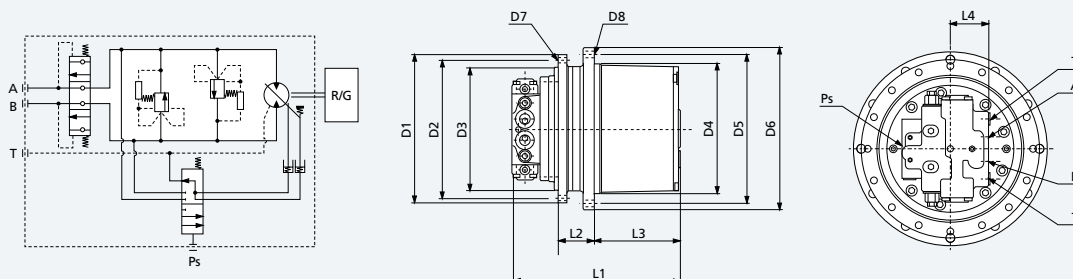
Motor options

Pressure relief valves, shockless type
Anticavitation valve

Brake

Hydraulically released failsafe parking brake automatically operated by main pressure

Type	Motor displacement max/min	Max. pressure bar	Max. flow l/min	2 speed control		Parking brake torque Nm	Range of ratios 1:	Weight Kg	Approx. weight of machine ton
				min. pressure bar	max. pressure bar				
700 C2 K	12-5.5	210	20	6	6	25	32-41	20	1.6
700-2C2 K	18-9	210	30	6	6	25	30-42	25	2
701 C2 K	18-11.6	250	35	6	6	25	30-53	25	3
702 C2 K	26.3-13.4	250	45	6	6	40	37-53	35	4
704 C2 K	33.8-19	250	60	6	6	40	45-53	60	5.5
705 C2 K	50.9-25.4	320	92	6	6	50	24-53	70	7
706 C3 K	50-25	300	75	6	6	50	68-128	80	8-10
707 C3 K	87-50	300	120	10	10	240	46-109	140	10-12
709 C3 K	87-50	300	160	10	10	400	53-123	225	13-20
710 C3 K	170-96	300	240	10	10	400	49-69	230	20-25
713 C2 K	170-96	300	230	10	10	400	55	280	25-29
713 C3 K	230-120	345	310	10	10	400	60-75	300	29-37
715 C3 K	230-340	345	370	10	10	400	62-82	380	37-50
716 C3 K	340	345	420	10	10	2000	75	500	50-60
718 C3 K	340	345	500	10	10	2000	85-106	850	60-80
720 C3 K	340	345	500	10	10	2000	120	1000	up to 120



Type	D1	D2	D3	D4	D5	D6	D7	D8	L1	L2	L3	L4	A-B	T	Ps
700 C2 K	175	155	140	140	155	175	M10x1.5 n°8	M10x1.5 n°8	202	45	93	40	1/4"	1/4"	1/4"
700-2C2 K	190	170	150	160	180	200	M10x1.5 n°8	M10x1.5 n°8	223	40	108	39	3/8"	1/4"	1/4"
701 C2 K	215	192	165	190	215	240	M12x1.75 n°9	M12x1.75 n°9	300	50	125	45	1/2"	1/4"	1/4"
702 C2 K	215	192	165	204	232	255	M12x1.75 n°9	M12x1.75 n°9	285	70	115	45	1/2"	1/4"	1/4"
704 C2 K	264	240	200	230	262	286	M14x2 n°9	M14x2 n°9	345	68	167	46	1/2"	3/8"	1/4"
705 C2 K	268	244	210	230	260	286	M14x2 n°12	M14x2 n°12	340	75	144	50	1/2"	3/8"	1/4"
706 C3 K	308	280	246	280	330	370	M16x2 n°20	M16x2 n°20	412	100	193	50	1/2"	3/8"	1/4"
707 C3 K	350	320	280	300	340	370	M16x2 n°16	M16x2 n°20	440	91	210	84	3/4"	1/2"	1/4"
709 C3 K	350	320	280	300	340	370	M16x2 n°16	M16x2 n°20	470	91	240	84	3/4"	1/2"	1/4"
710 C3 K	375	340	300	330	370	400	M16x2 n°30	M16x2 n°30	455	99.5	243	84	3/4"	1/2"	1/4"
713 C2 K	375	340	300	350	400	435	M16x2 n°30	M20x2.5 n°16	500	91	253	84	3/4"	1/2"	1/4"
713 C3 K	480	440	380	410	455	490	M24x3 n°18	M20x2.5 n°24	570	100	278	90	1"	1/2"	1/4"
715 C3 K	500	460	420	460	510	550	M20x2.5 n°24	M20x2.5 n°24	605	130	315	90	1"	1/2"	1/4"
716 C3 K	500	460	420	460	500	548	M24x3 n°24	M18x1.5 n°36	663	165	308	118	1"	3/4"	1/4"
718 C3 K	570	510	450	576	626	670	M24x3 n°30	M24x3 n°30	730	170	350	118	1"	3/4"	1/4"
720 C3 K	650	600	480	610	680	735	M30x3.5 n°30	M24x3.5 n°24	800	170	370	118	1"	3/4"	1/4"

