

# Motor Series **MTS2b**

## Stepper Motor 15°



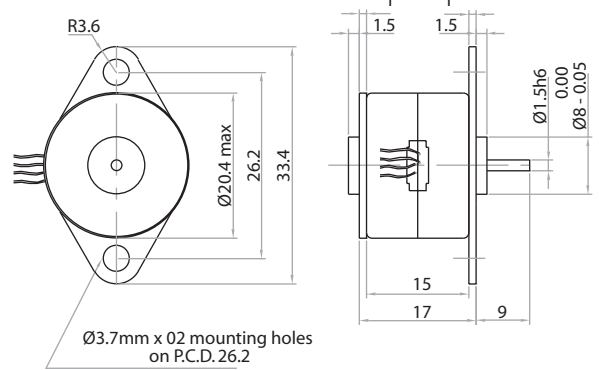
### Standard Data

Motor type		Permanent Magnet (PM) stepper motor
Electrical Enclosure	IP	40
Connections		Flexible Leads 28 AWG, 200mm length; ends stripped
Life expectancy		3 years in continuous operation
Weight		30
Mounting		Any position by ears

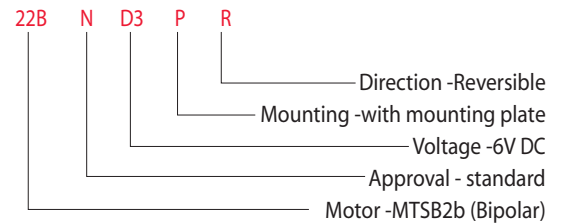
### Technical Data

Steps per revolution		24		
Degree/step		15		
Winding type		bipolar		
Standard voltages	V	6	12	24
Resistance per winding	$\Omega$	27	125	500
Winding Type		unipolar		
Standard Voltage	V	6	12	24
Resistance per winding	$\Omega$	35	150	600
Winding temperature	$^{\circ}\text{C}$	105 max.		
Holding torque	N-cm	0.4 (MTSB2b)	0.3 (MTSU2b)	
Axial Force	N	1		
Lateral Force	N	0.8		
Rotor inertia	$\text{g-cm}^2$	0.3		

### Drawing

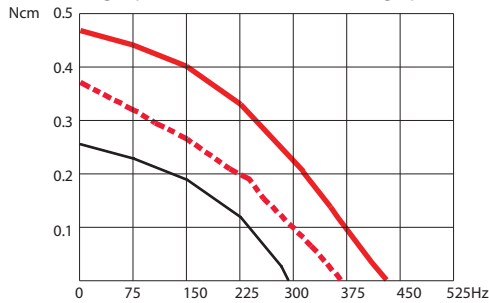


### Ordering Data (eg.)

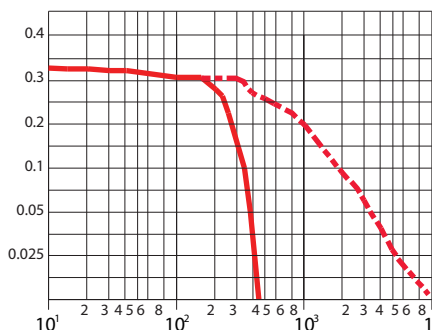


### Torque Graphs

Start range (pull - in) with constant voltage power stage

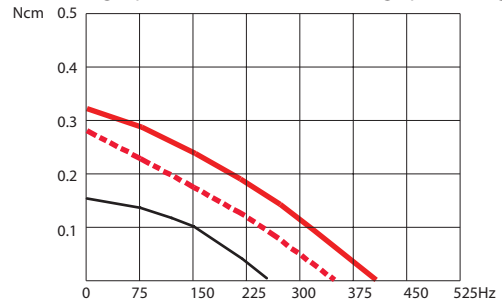


2-Phase stepper Motor MTSB2b

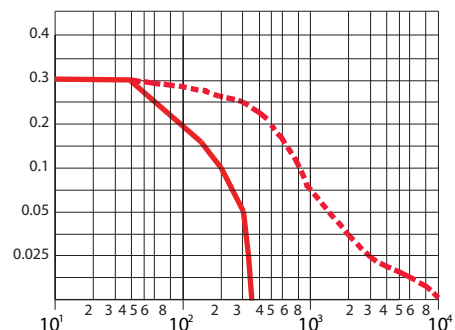


Slew range (pull-out) and start range (pull-in) with constant current power stage (chopper Drive)

Start range (pull - in) with constant voltage power stage



2-Phase stepper Motor MTSU2b



Slew range (pull-out) and start range (pull-in) with constant current power stage (chopper Drive)