



Gear Series **GB X**

Spur Reduction Gearhead - 300 Kg-cm



Design

Gearhead GB X contains heavily loaded steel gear wheels. The spur gears are fixed on steel spindles which are hardened and polished to a mirror finish & rotate in sintered bushings. The thick output shaft rotates in robust bronze bushings. All the gears are housed in between metal plates & closed by plastic dust cover. All bearings are permanently lubricated and therefore require no maintenance. GB X can also be combined with small to medium sizes of DC motors (up to f52mm). Output shaft can also be emerging from the rear side or both sides. Potentiometer can be mounted on to the gearhead & connected to the output shaft by means of a suitable gear ratio Instof rotational, linear drive also possible (on demand only).

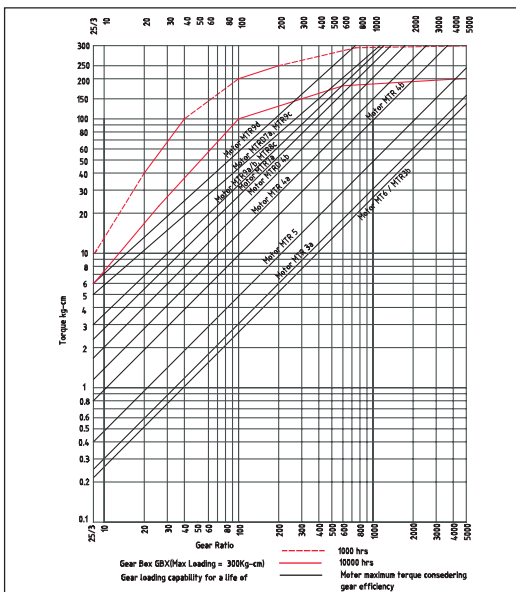
Standard Data

Gear torque	kg-cm	300
Combination with Mechtex motors		MT0, MT6, MTR/S5, MTR/S-4a/b, MTR/SD-4, MTR/SD4-RE & DC motors (Up to dia 52) MTR/SD 7a, MTR/S 8c, MTR/S D8c, MTR9a,b,c,d
Mounting		any position
Weight	g	850
Axial thrust	kg	60
Lateral force	kg	90
Radial torque	kg-cm	120
Output Bearing		Bronze
Output shafts	Ø	dia. 15 x 20 mm (with a flat); others on request
Ambient temperature operation	°C	-15 ... +55

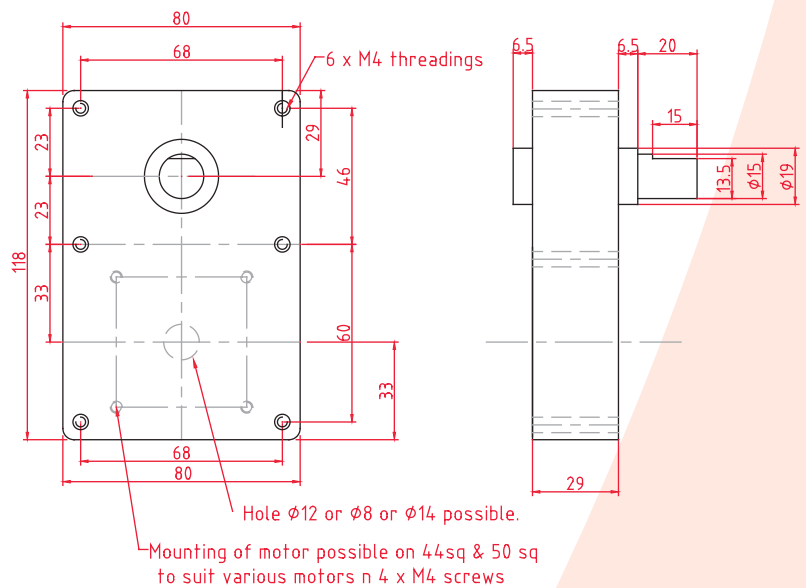
Transmission ratios

50/3	20	25	30	100/3	75/2	40	125/3	50	60	200/3	75	250/3
100	120	125	400/3	150	500/3	180	375/2	200	225	250	300	1000/3
375	450	500	600	750	2500/3	900	1000	1200	1500	2000	2500	
Transmission ratios > 2500 in combination with GB5P gear head												

Torque/Transmission ratio/life Graph



Dimensional Drawing

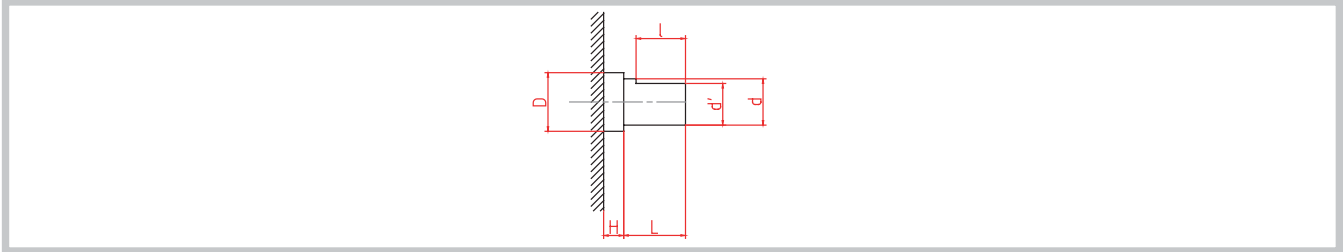




Gear Series **GB X**

Spur Reduction Gearhead - 300 Kg-Cm

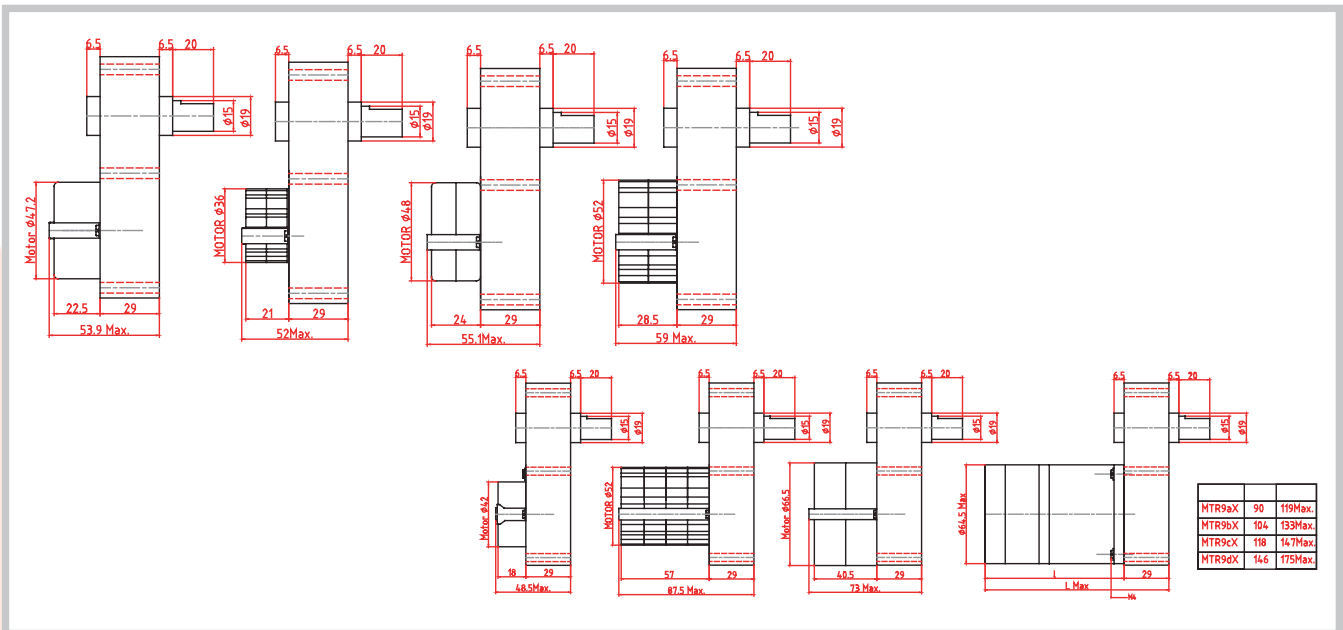
Shaft Drawing



Shaft Type Catalogue

Shaft Type	D	H	d	Shaft Diam.	L	d'	
Catalogue	D	H	d	Shaft Diam.	L	d'	
S	19	6.5	15	20	15	13.5	
A	19	6.5	15	40	35	13.5	
B	19	6.5	12	19	17	11	
Others on request							

Drawings



Photographs

