



Gear Series **GB5P**

Spur Reduction Gearhead - 5 Kg-cm



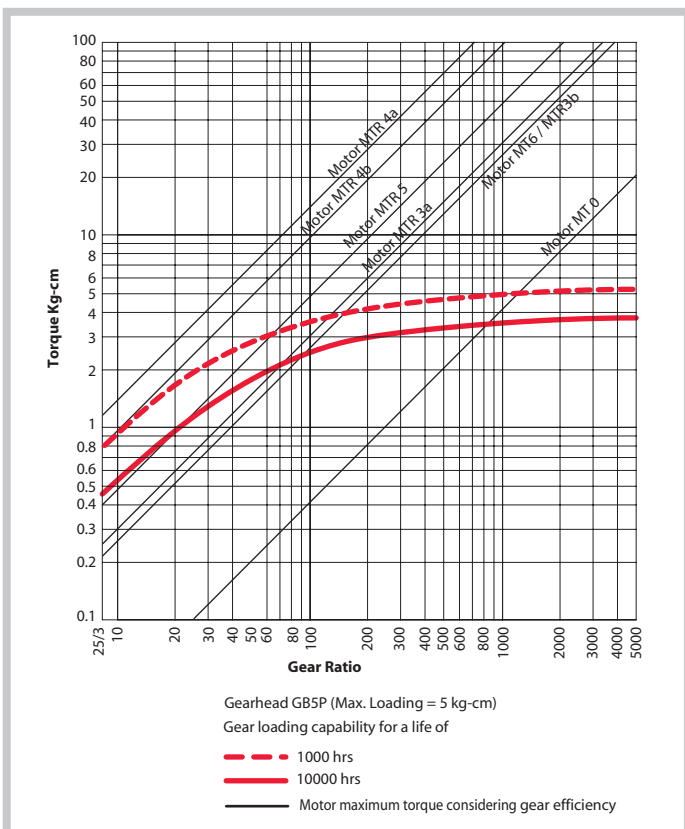
Design

Gearhead GB5P, the most popular gearhead, is a multi step gear box with all polyacetal gears which rotate on steel spindles which are polished to a mirror-finish and introduced between metal plates with a plastic frame. All bearings are permanently lubricated and therefore require no maintenance. Motor is attached to the gear box by means of spring clip. Thicker shafts (Ø 6-7mm) mounted in robust bushings (Ø12mm) are available (GB5PS). Similarly the gears at the output end can be metal (GB5PH) with thick shafts & robust bushings (GB5PHS). Sintered gears variant also possible (GB5Si) GB5P can also be combined with small DC Motors. To achieve higher gear torque, GB5P can be mounted on GB4. Linear drives also possible with small sized motors (Ø<36mm).

Standard Data

Gear Torque	kg-cm	5
Combination with Mechtex motors		Motor MT0, MT6, MTR/S3a/3b, MTR/S4a/4b and small DC motors
Mounting		any position
Weight	gm	60
Axial thrust	kg	2
Radial torque	kg	6
Lateral torque	kg-cm	6
Slipping clutches/free wheel		available for certain ratios
Output shafts	Ø	3.175, 4.00, 4.76, 5.00, 6.00, 6.35 & 7.00 (others on request)
Ambient temperature operation	°C	-15...+55

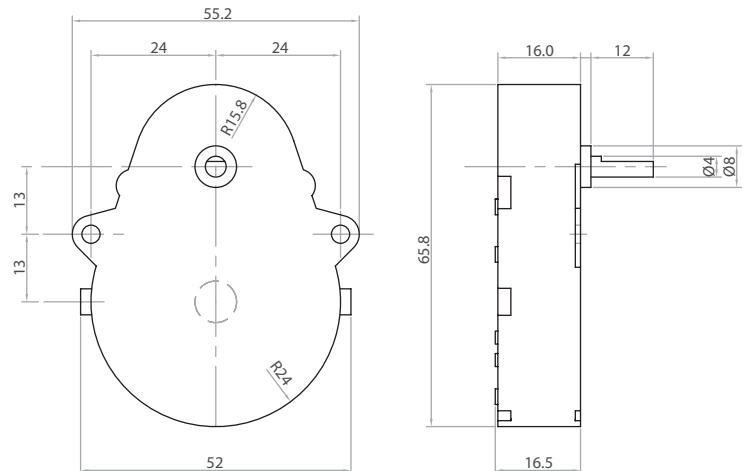
Torque/Transmission ratio/life Graph



Transmission ratios

For Transmission Ratios refer to page nos. 12 & 13.

Dimensional Drawing

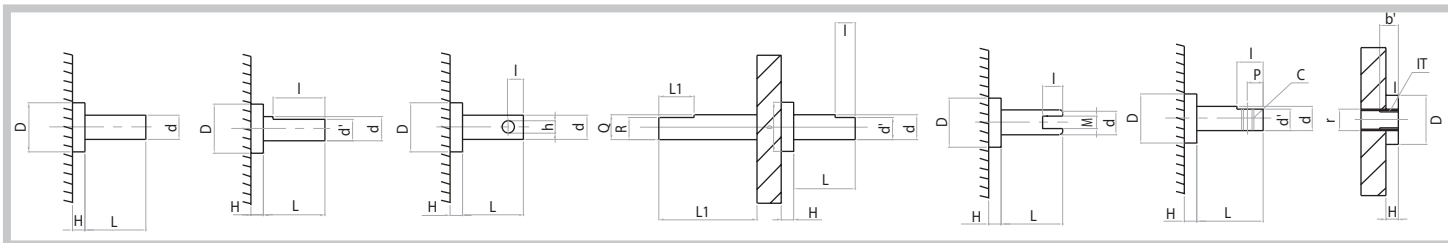




Gear Series GB5P

Spur Reduction Gearhead - 5 Kg-cm

Shaft Drawings



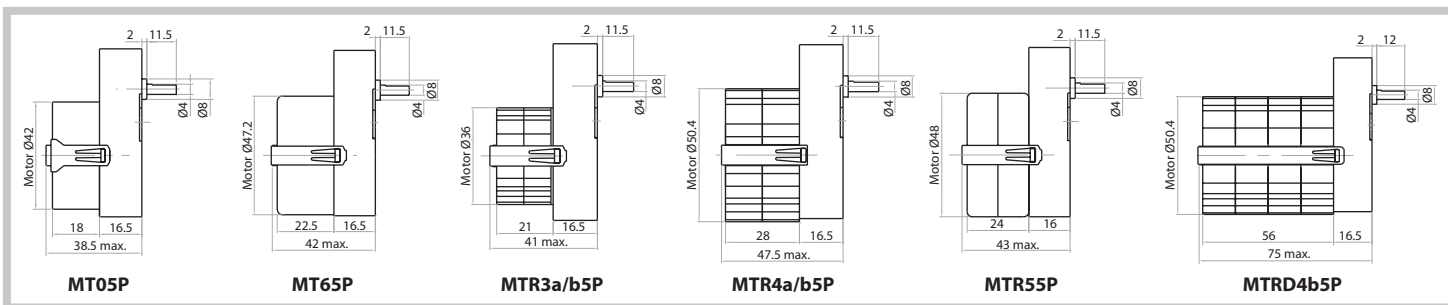
Shaft Type Catalogue

Shaft type Catalogue	D	H	d	Shaft Diam. L	l	d'	h
S	8	2	4	11.5	9	3.6	
A	8	2	4	21.5	17	3.6	
B	8	2	4	26.5	22	3.6	
C	8	2	4	11.5	9	3	
D	8	2	4	7	4.5	3.6	
E	8	2	4	38	36	3.6	
F	8	2	4	16.5	14	3.6	
G	8	2	1/8"	11.5	9	2.8	
H	8	2	1/8"	16.5	14	2.8	
I	8	2	1/8"	21.5	17	2.8	
J	8	2	4	11.5	4		2
K	8	2	4	11.5	7.5		1.4
L	8	2	4	20.5	14	2	
M	8	2	3/16"	11.5	9	4.2	
N	8	2	3/16"	21.5	17	4.2	
O	8	2	3/16"	26.5	22	4.2	
P	8	2	5	11.5	9	4.5	
Q	8	2	5	21.5	17	4.5	
R	8	2	5	26.5	22	4.5	

Shaft type Catalogue	D	H	d	Shaft Diam. L	l	d'	l'	L'	R	P	Q	M	IT	r	b'	C	h
T	8	2	5	43.5													
U	8	2	3/16"	16.5	12	4.2											
V	8	2	4	10.5	9	3.6	20	35.5	3.6		4						
W	12	3	6	11.5	9	4.5											
X	12	3	6	21	18	5.4											
Y	12	3	6	52													
Z	12	3	7	13	10	6											
a	12	3	8	13	10	6											
b	12	3	6	20.5	10	5											
c	12	3	6	13.5	10.5	5.4											
d	12	3	6	36	30	5.4											
e	12	3	8	21	16	7.2											
f	12	3	6	11.5	5												2
g	12	3	6	80	20												2
h	12	3	7	18.7	4.5												3
i	12	3	6	11.5	5												3
j	12	3	7	18	16	6				9							
k	12	3	8														
m	12	3	7	16	10												

Note: '+' 3.5 mm also possible

Drawings



Photographs

