



Gear Series **GB5H**

Spur Reduction Gearhead - 10 Kg-cm



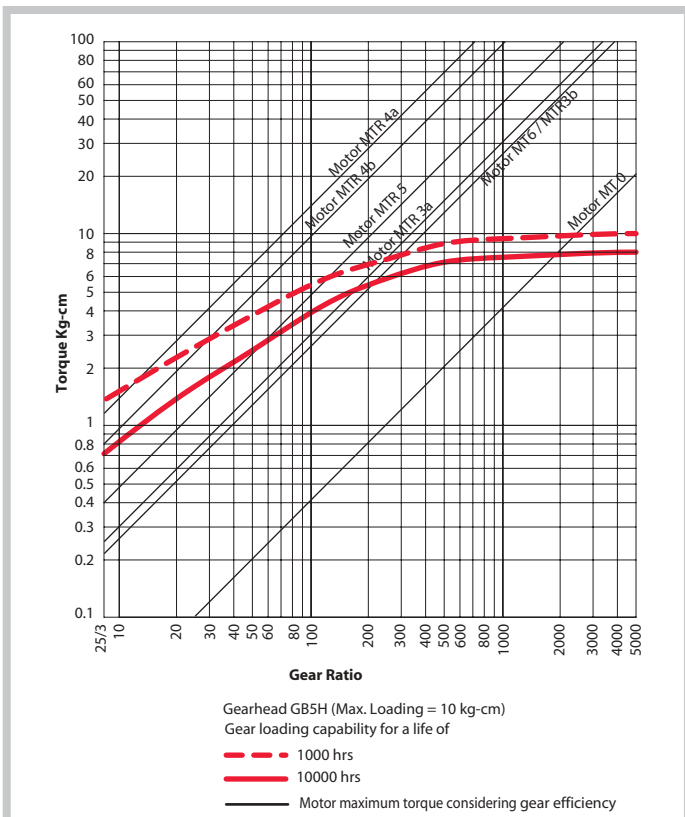
Design

Gearhead GB5H, a moderately priced gearhead, is specially designed to cater to heavy duty application in a small frame. This is a multi step gear box with all thick metal gears that rotate on steel spindles which are polished to a mirror-finish and introduced between metal plates with a plastic frame. All bearings are permanently lubricated and therefore require no maintenance. Motor is attached to the gear box by means of spring clip. Thicker shafts (\varnothing 6-7mm) mounted in robust bushings (\varnothing 12mm) are available in a new variant (GB5H). GB5H can also be combined with small DC Motors, To achieve higher gear torque, GB5H can be mounted on GB4. Linear drives also Possible with small sized motors (\varnothing < 36mm).

Standard Data

| | | |
|---------------------------------|---------------|--|
| Gear Torque | kg-cm | 10 |
| Combination with Mechtex motors | | MT0,MT6,MTR/S3a/3b,MTR/S-5,MTR/S4a/4b and small DC motors |
| Mounting | | any position |
| Weight | gm | 65 |
| Axial thrust | kg | 2 |
| Radial torque | kg | 10 |
| Lateral torque | kg-cm | 15 |
| Slipping clutch/Free wheel | | not available |
| Output shafts | \varnothing | 3.175,4.00,4.76,5.00,6.00,6.35 & 7..00 (others on request) |
| Ambient temperature operation | $^{\circ}$ C | -15...+55 |

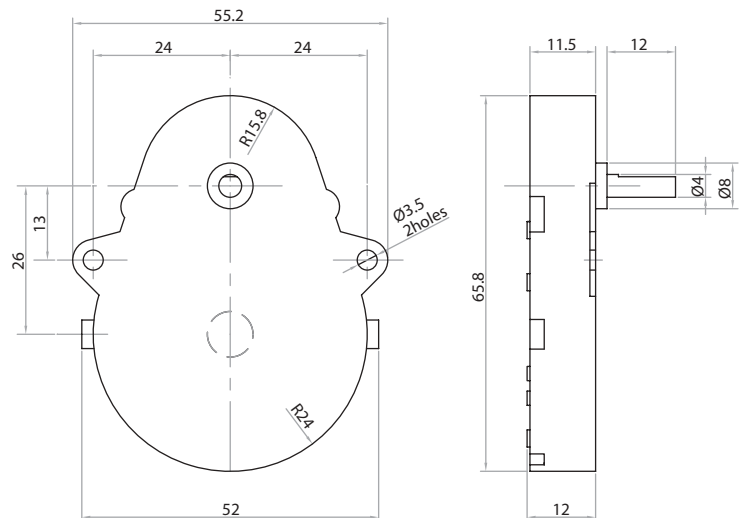
Torque/Transmission ratio/life Graph



Transmission ratios

For Transmission Ratios refer to page nos. 12 & 13.

Dimensional Drawing

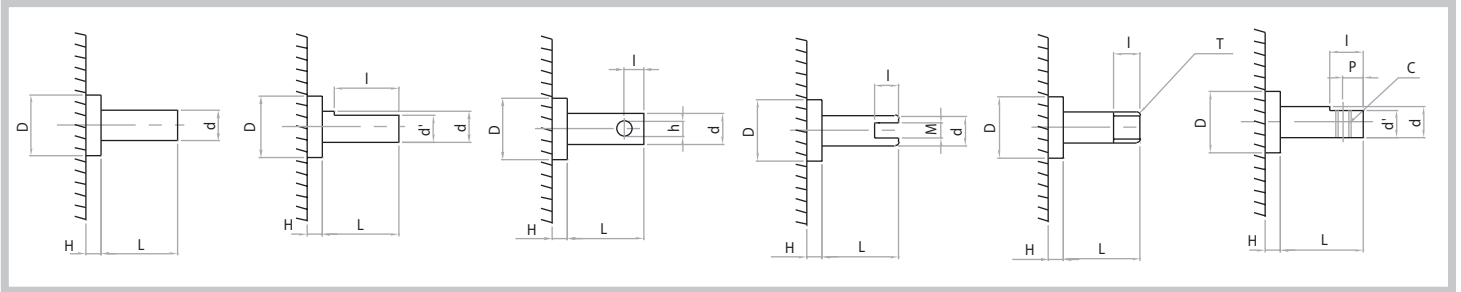




Gear Series **GB5H**

Spur Reduction Gearhead - 10 Kg-cm

Shaft Drawings



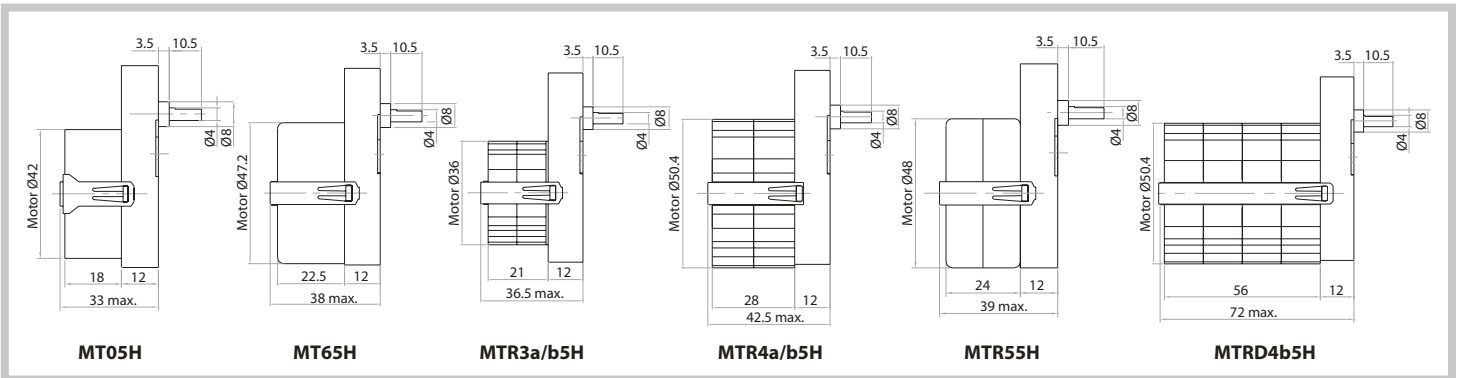
Shaft Type Catalogue

| Shaft type Catalogue | D | + H | d | Shaft Diam. L | I | d' | T |
|----------------------|-------|-----|-------|---------------|------|-----|------|
| S | 6.35* | 2 | 3.175 | 12 | 9 | 2.8 | |
| A | 8 | 2 | 3.175 | 9 | 6 | 2.8 | |
| B | 8 | 2 | 3.175 | 16 | 13 | 2.8 | |
| C | 8 | 2 | 3.175 | 21 | 18 | 2.8 | |
| D | 8 | 2 | 4 | 12 | 9 | 3.6 | |
| E | 8 | 2 | 4 | 16 | 13 | 3.6 | |
| F | 8 | 2 | 4 | 21 | | | |
| G | 6.35* | 2 | 4.764 | 12 | 9 | 4.2 | |
| H | 6.35* | 2 | 4.764 | 16 | 13 | 4.2 | |
| I | 6.35* | 2 | 4.764 | 20 | 11 | 4.2 | |
| J | 6.35* | 2 | 4.764 | 22 | 19 | 4.2 | |
| K | 6.35* | 2 | 4.764 | 25.5 | 20 | 4.2 | |
| L | 6.35* | 2 | 4.764 | 8 | 6 | 4.2 | |
| M | 8 | 2 | 3.175 | 12 | 11.5 | | 1/8" |

| Shaft type Catalogue | D | + H | d | Shaft Diam. L | I | d' | P | M | h | C |
|----------------------|----|-----|------|---------------|-----|-----|---|---|---|----|
| N | 8 | 2 | 6.35 | 12 | 7 | | | 3 | | |
| O | 8 | 2 | 4 | 21 | 10 | | | | 2 | |
| P | 8 | 2 | 4 | 13 | | | | | | |
| Q | 8 | 3.5 | 5 | 19 | 5.5 | | | | 2 | |
| R | 12 | 3 | 6 | 15 | 10 | 5.4 | | | | |
| T | 12 | 3 | 6 | 21 | 16 | 5.4 | | | | |
| U | 12 | 3 | 6 | 26 | 18 | 5.4 | | | | |
| V | 12 | 3 | 6 | 52 | | | | | | |
| W | 12 | 3 | 7 | 22 | 17 | 6 | 9 | | | M4 |
| X | 12 | 3 | 7 | 15 | 10 | 6.3 | | | | |
| Y | 12 | 3 | 7 | 21 | 15 | 5 | | | | |
| Z | 12 | 3 | 7 | 21 | | | | | | |
| a | 12 | 3 | 7 | 26 | 18 | 6.3 | | | | |
| b | 12 | 3 | 7 | 52 | | | | | | |

Note: '+ ' 3.5 mm also possible * 8 mm also possible

Drawings



Photographs

