



Gear Series **GB380CP**

Spur Reduction Gearhead - 5 Kg-cm

Design

Gearhead GB380CP is a multi step gearhead with all polyacetal gears which rotate on steel spindles which are polished to a mirror-finish and introduced between metal plates with a plastic frame. All bearings are permanently lubricated and therefore require no maintenance. Thicker shafts (\varnothing 6-7mm) mounted in robust bushings (\varnothing 12) are available. Similarly the gears at the output end can be metal (GB380CPH) with thick shafts (\varnothing 6-7mm) & robust bushings. Sintered gears variant also possible (GB380CSI).

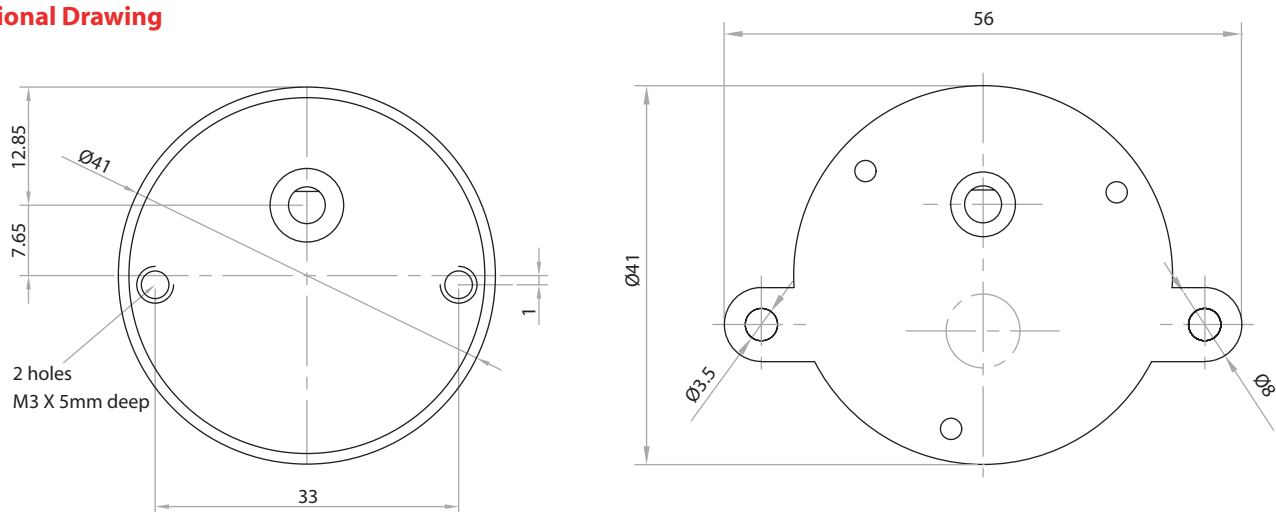
Standard Data

Gear Torque	kg-cm	5
Combination with Mechtex motors		only small DC motors up to dia. 35mm
Mounting		any position
Weight	gm	55
Axial thrust	kg	2
Radial torque	kg	6
Lateral torque	kg-cm	6
Output shafts		all shafts same as GB5P (refer page 41)
Ambient temperature operation	$^{\circ}$ C	-15 ... +55

Transmission ratios

For Transmission Ratios refer to page nos. 12 & 13.

Dimensional Drawing



Photographs

