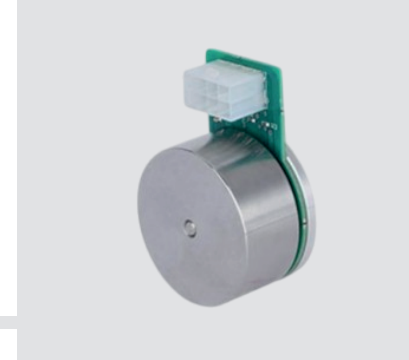


BO42(30W)



Design

BO4219 Series Motors are Brushless DC Outrunner motors with 43mm diameter and 19mm height. These Motors are available with sensor and without sensor. Robust Ball bearings ensure excellent service life with ≥ 5000 Hrs. Drivers are also available as an Add-On unit on special request. These motors are available in different speeds and different voltages on special request. In order to reduce motor height, we can use FFC cable also on the special request.

Standard Data

Motor Type		Outrunner Brushless dc motor
Configuration		12N-16P
Ambient Temperature Operation	°C	-40°C to +100°C
Storage & Transport Temperature	°C	-60°C to +120°C
Weight	g	160
Electrical Enclosure	IP	40 (As per IEC 60529)
Life expectancy		≥ 5000 hours @ Rated Torque

Available Customizations

Sensorless
Inbuilt driver
Customized motor speed
Dust cover (Upto IP 65 **)
22 AWG x 200mm ends tinned & stripped
FFC Output
Customized shaft
Hollow shaft for robotics and gimbal applications

Technical Data

MECHTEX MODEL No.	Physical data Dia x height mm	No load data			Data at Rated Torque				Stall	
		Voltage V DC	Speed RPM	Current A	Speed RPM	Current A	Torque cNm	Power W(out)	Torque cNm	Current A
BO4219-24a	43 X 19	24	4420	0.13	3000	1.1	5.7	17	17	3.2
BO4219-24b	43 X 19	24	6000	1.85	4855	1	4.0	19	23	6.3

*Other speeds & voltages on special request

** On special request

Dimensional Drawing

