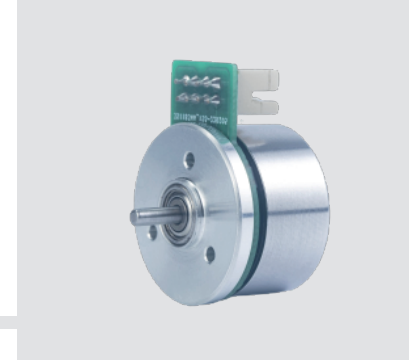


BO22(3W)



Design

BO2210 Series Motors are Brushless DC Out runner motors with 21mm diameter and 10mm height. These Motors are available with sensor and without sensor. Robust Ball bearings ensure excellent service life with ≥ 5000 Hrs. Drivers are also available as an Add-On unit on special request. These motors are available in different speeds and different voltages on special request. In order to reduce motor height, we can use FFC cable also on the special request.

Standard Data

Motor Type		Outrunner Brushless dc motor
Configuration		9N-8P
Ambient Temperature Operation	°C	-40°C to +100°C
Storage & Transport Temperature	°C	-60°C to +120°C
Weight	g	22
Electrical Enclosure	IP	40 (As per IEC 60529)
Life expectancy		≥ 5000 hours @ Rated Torque

Available Customizations

Sensorless
Customized motor speed
Dust cover (Upto IP 65 **)
26 AWG x 200mm ends tinned & stripped
FFC Output
Customized shaft

Technical Data

MECHTEX	Physical data	No load data			Data at Rated Torque				Stall	
MODEL No.	Dia x height mm	Voltage V DC	Speed RPM	Current mA	Speed RPM	Current mA	Torque cNm	Power W(out)	Torque cNm	Current A
BO2210	21 X 10	6	9020	60	3005	600	0.3	0.9	0.5	1
	21 X 10	12	9510	30	3480	300	0.31	1	0.5	0.5

*Other speeds & voltages on special request

** On special request

Dimensional Drawing

