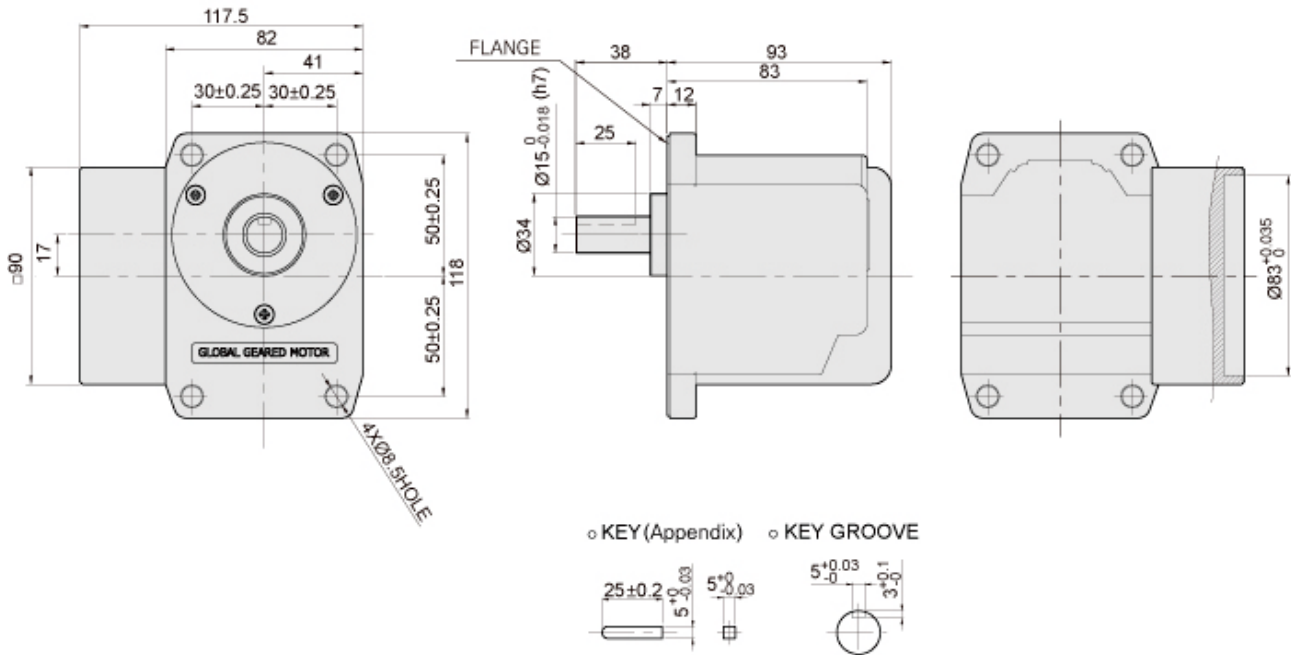


K9P□BRS(Solid Shaft type)



Diagram and general contents

Outline Drawing



RATED TORQUE OF GEARHEAD

● INDUCTION MOTOR / 50Hz

Unit = above : N · m / below : kgfcm

| Model | Speed(rpm) | 500 | 416 | 300 | 250 | 200 | 166 | 120 | 100 | 83 | 60 | 50 | 42 | 30 | 25 | 20 | 17 | 15 | 12.5 | 10 | 8.3 |
|--------------------------------|------------|------|------|------|------|------|------|------|------|------|-------|-------|-------|-------|-------|-------|-----|-----|------|-----|-----|
| Motor/Gearhead | Ratio | 3 | 3.6 | 5 | 6 | 7.5 | 9 | 12.5 | 15 | 18 | 25 | 30 | 36 | 50 | 60 | 75 | 90 | 100 | 120 | 150 | 180 |
| K9I□60F□(-T, -T5) / K9P□BRS | | 0.89 | 1.06 | 1.48 | 1.77 | 2.22 | 2.66 | 3.70 | 4.44 | 5.32 | 7.40 | 7.83 | 9.40 | 13.05 | 15.66 | 19.58 | 20 | 20 | 20 | 20 | 20 |
| | | 8.9 | 10.6 | 14.8 | 17.7 | 22.2 | 26.6 | 37.0 | 44.4 | 53 | 74.0 | 78.3 | 94 | 130.5 | 156.6 | 196 | 200 | 200 | 200 | 200 | 200 |
| K9I□90F□(-T, -T5) / K9P□BRS | | 1.33 | 1.59 | 2.21 | 2.65 | 3.32 | 3.98 | 5.53 | 6.63 | 7.96 | 11.05 | 11.70 | 14.04 | 19.50 | 23.40 | 29.25 | 20 | 20 | 20 | 20 | 20 |
| | | 13.3 | 15.9 | 22.1 | 26.5 | 33.2 | 39.8 | 55.3 | 66.3 | 80 | 110.5 | 117.0 | 140 | 195.0 | 234.0 | 293 | 200 | 200 | 200 | 200 | 200 |

● INDUCTION MOTOR / 60Hz

Unit = above : N · m / below : kgfcm

| Model | Speed(rpm) | 600 | 500 | 360 | 300 | 240 | 200 | 144 | 120 | 100 | 72 | 60 | 50 | 36 | 30 | 24 | 20 | 18 | 15 | 12 | 10 |
|--------------------------------|------------|------|------|------|------|------|------|------|------|------|------|------|-------|-------|-------|-------|-----|-----|-----|-----|-----|
| Motor/Gearhead | Ratio | 3 | 3.6 | 5 | 6 | 7.5 | 9 | 12.5 | 15 | 18 | 25 | 30 | 36 | 50 | 60 | 75 | 90 | 100 | 120 | 150 | 180 |
| K9I□60F□(-T, -T5) / K9P□BRS | | 0.75 | 0.91 | 1.26 | 1.51 | 1.89 | 2.26 | 3.15 | 3.77 | 4.53 | 6.29 | 6.66 | 7.99 | 11.10 | 20.00 | 20.00 | 20 | 20 | 20 | 20 | 20 |
| | | 7.5 | 9.1 | 12.6 | 15.1 | 18.9 | 22.6 | 31.5 | 37.7 | 45 | 62.9 | 66.6 | 80 | 111.0 | 200.0 | 200 | 200 | 200 | 200 | 200 | 200 |
| K9I□90F□(-T, -T5) / K9P□BRS | | 1.12 | 1.35 | 1.87 | 2.24 | 2.81 | 3.37 | 4.68 | 5.61 | 6.73 | 9.35 | 9.90 | 11.88 | 16.50 | 19.80 | 20.00 | 20 | 20 | 20 | 20 | 20 |
| | | 11.2 | 13.5 | 18.7 | 22.4 | 28.1 | 33.7 | 46.8 | 56.1 | 67 | 93.5 | 99.0 | 119 | 165.0 | 198.0 | 200 | 200 | 200 | 200 | 200 | 200 |

- * The code in □ of gearhead model is for gear ratio.
- * Output shaft of the geared motor rotates in the opposite direction of the motor. Others indicate rotation in the opposite direction.
- * RPM is based on motor's synchronous rpm (50HZ:1500rpm, 60HZ:1800rpm) and calculated by dividing gear ratio. Actual rpm is 2~20% less than indicating rpm according to load size.
- * Output torque become smaller during starting than rated because of low transferring efficiency.

K9P□BRS(Solid Shaft type)

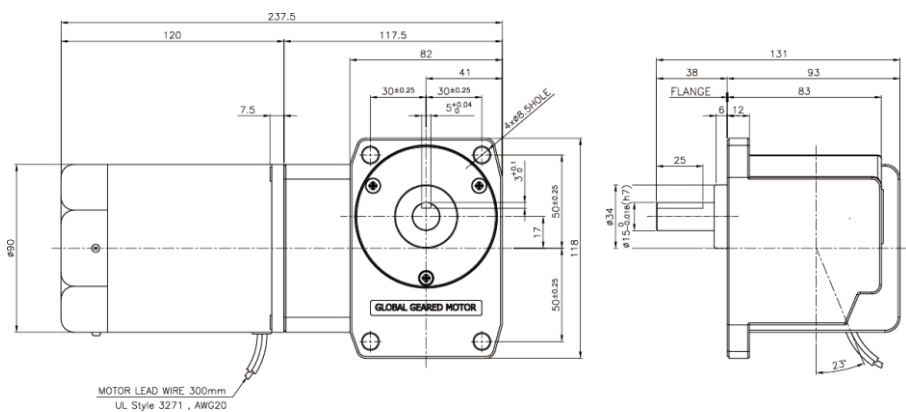
DIMENSIONS

RATED TORQUE A WEIGHT

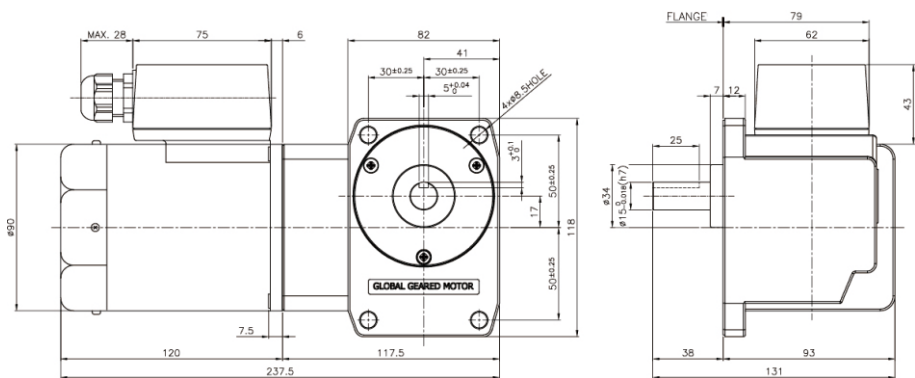
| PART | | WEIGHT(kg) | MOUNTING BOLT |
|-----------|-------------|------------|---------------|
| GEAR HEAD | | 2.50 | M6 P1.0 X 20 |
| MOTOR | K9IP60F□ | 2.50 | |
| | K9IP60F□-T | 2.68 | |
| | K9IP60F□-T5 | 2.68 | |

| PART | | WEIGHT(kg) | MOUNTING BOLT |
|-----------|-------------|------------|---------------|
| GEAR HEAD | | 2.50 | M6 P1.0 X 20 |
| MOTOR | K9IP90F□ | 3.00 | |
| | K9IP90F□-T | 3.18 | |
| | K9IP90F□-T5 | 3.18 | |

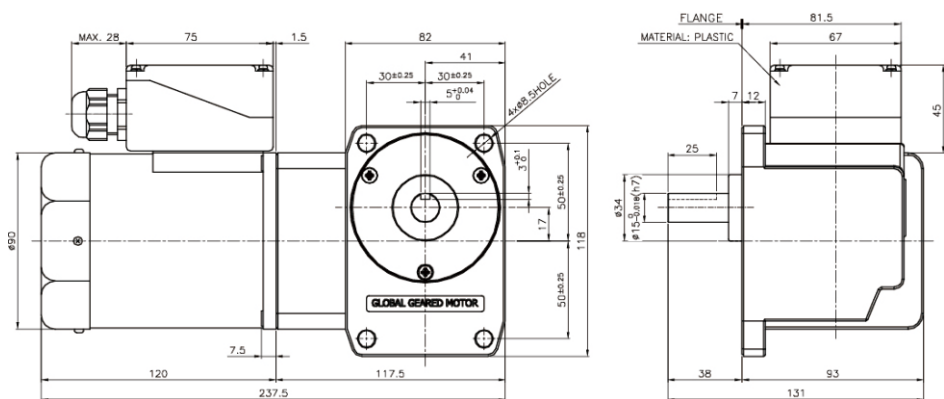
K9□P60F□+K9P□BRS



K9□P60F□-T+K9P□BRS



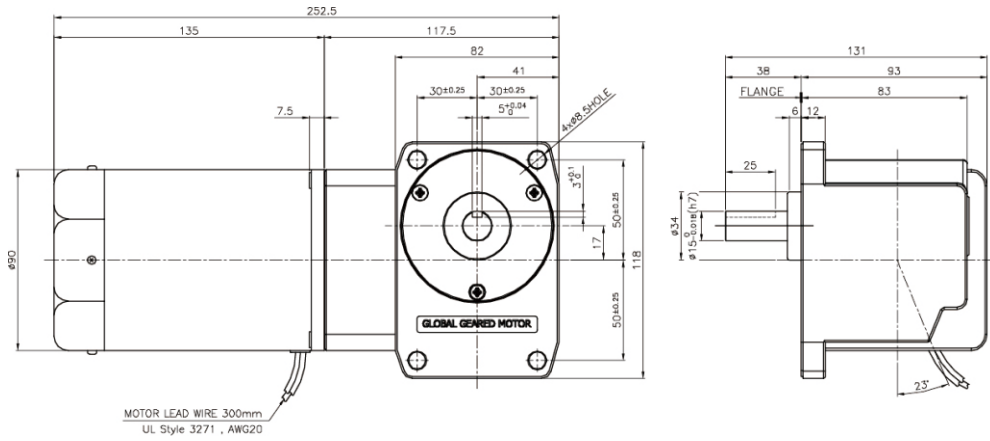
K9□P60F□-T5+K9P□BRS



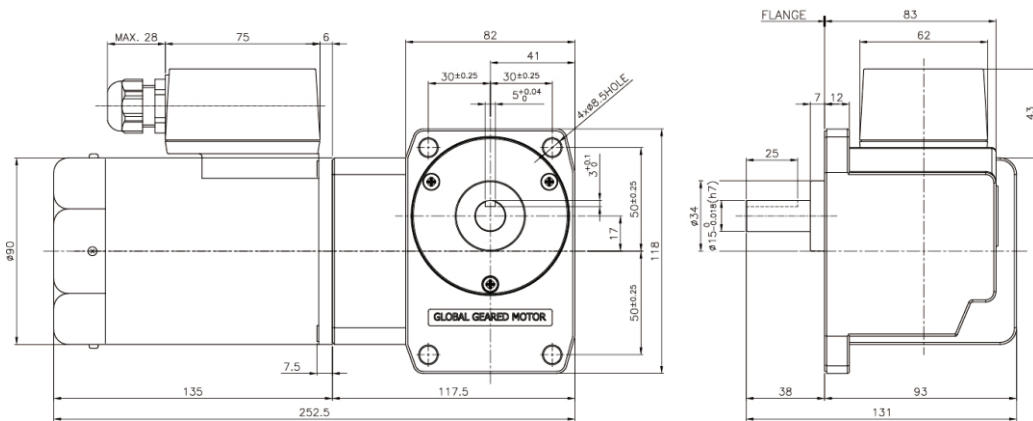
K9P□BRS(Solid Shaft type)

DIMENSIONS

K9□P90F□K9P□BRS



K9□P90F□-T+□K9P□BRS



K9□P90F□-T5+□K9P□BRS

