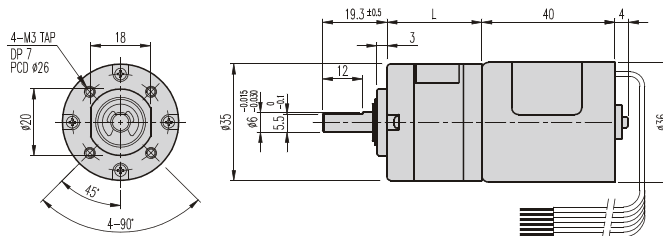


## K35-TYPE

## Planetary GEARHEAD

### DIMENSIONS

#### K35-3640 BLDC SERIES



GEARHEAD LENGTH

RATIO	L
1/005	22.1
1/014 ~ 1/027	28.5
1/051 ~ 1/139	34.9
1/189 ~ 1/721	41.3

#### BLDC MOTOR PERFORMANCE DATA

ITEM MODEL	VOLTAGE (DC)	NO LOAD		AT MAX. EFF.			WEIGHT (g)
		mA	rpm	gf.cm	A	rpm	
NB1-3640-053	12V	500	5300	150	1,2	4500	150
NB2-3640-050	24V	300	5000	250	0,8	3900	

#### AT MAXIMUM EFFICIENCY (BLDC 3640 SERIES)

GEAR	NB1-3640-053		NB2-3640-050	
	DC 12V		DC 24V	
	rpm	kgf.cm	rpm	kgf.cm
1/005	900	0,7	780	1,1
1/014	321	1,7	278	2,9
1/019	237	2,3	205	3,9
1/027	167	3,3	144	5,6
1/051	88	5,5	76	9,5
1/071	63	7,7	55	12
1/100	45	10,8	39	12
1/139	32	12	28	12
1/189	24	12	21	12
1/264	17	12	15	12
1/369	12	12	10,5	12
1/516	8,7	12	7,6	12
1/721	6,2	12	5,4	12

\* Gearbox output shaft rotation direction is same direction with motor.