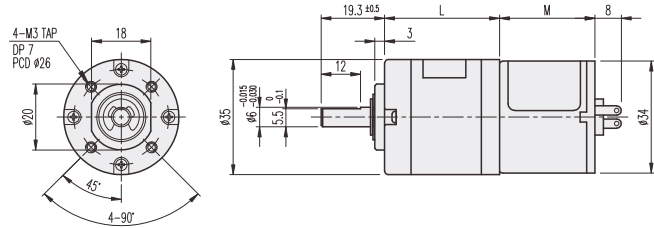


## K35-TYPE

## Planetary GEARHEAD

### DIMENSIONS

#### K35-3429 & 3448 SERIES



GEARHEAD LENGTH	
RATIO	L
1/005	22.1
1/014 ~ 1/027	28.5
1/051 ~ 1/139	34.9
1/189 ~ 1/721	41.3

MOTOR LENGTH	
MOTOR	M
KM3429 SERIES	29
KM3448 SERIES	48

#### AT MAXIMUM EFFICIENCY (3429 SERIES)

GEAR	MODEL		KD3429S1		KD3429S2		KD3429T1		KD3429T2		KD3429P1		KD3429P2	
			DC 12V		DC 24V		DC 12V		DC 24V		DC 12V		DC 24V	
	rpm	kgf-cm	rpm	kgf-cm	rpm	kgf-cm	rpm	kgf-cm	rpm	kgf-cm	rpm	kgf-cm	rpm	kgf-cm
1/5	900	0.16	900	0.16	1300	0.16	1300	0.16	1600	0.3	1600	0.16		
1/14	321	0.35	321	0.35	464	0.35	464	0.35	571	0.7	571	0.35		
1/19	236	0.48	236	0.48	342	0.48	342	0.48	421	1	421	0.48		
1/27	166	0.69	166	0.69	240	0.69	240	0.69	296	1.4	296	0.69		
1/51	88	1	88	1	127	1	127	1	156	2.1	156	1		
1/71	63	1.5	63	1.5	91	1.5	91	1.5	112	2.9	112	1.5		
1/100	45	2	45	2	65	2	65	2	80	4.1	80	2		
1/139	32	2.8	32	2.8	46	2.8	46	2.8	57	5.7	57	2.8		
1/189	23	3.1	23	3.1	34	3.1	34	3.1	42	6.2	42	3.1		
1/264	17	4.3	17	4.3	24	4.3	24	4.3	30	8.6	30	4.3		
1/369	12	6	12	6	17	6	17	6	21	12	21	6		
1/516	8	8.5	8	8.5	12	8.5	12	8.5	15	12	15	8.5		
1/721	6	11.8	6	11.8	9	11.8	9	11.8	11	12	11	11.8		

#### AT MAXIMUM EFFICIENCY (3448 SERIES)

GEAR	MODEL		KD3448S1		KD3448S2		KD3448T1		KD3448T2		KD3448P1		KD3448P2	
			DC 12V		DC 24V		DC 12V		DC 24V		DC 12V		DC 24V	
	rpm	kgf-cm	rpm	kgf-cm	rpm	kgf-cm	rpm	kgf-cm	rpm	kgf-cm	rpm	kgf-cm	rpm	kgf-cm
1/5	900	0.3	900	0.3	1300	0.3	1300	0.3	1600	0.3	1600	0.3		
1/14	321	0.7	321	0.7	464	0.7	464	0.7	571	0.7	571	0.7		
1/19	236	1	236	1	342	1	342	1	421	1	421	1		
1/27	166	1.4	166	1.4	240	1.4	240	1.4	296	1.4	296	1.4		
1/51	88	2.1	88	2.1	127	2.1	127	2.1	156	2.1	156	2.1		
1/71	63	2.9	63	2.9	91	2.9	91	2.9	112	2.9	112	2.9		
1/100	45	4.1	45	4.1	65	4.1	65	4.1	80	4.1	80	4.1		
1/139	32	5.7	32	5.7	46	5.7	46	5.7	57	5.7	57	5.7		
1/189	23	6.2	23	6.2	34	6.2	34	6.2	42	6.2	42	6.2		
1/264	17	8.6	17	8.6	24	8.6	24	8.6	30	8.6	30	8.6		
1/369	12	12	12	12	17	12	17	12	21	12	21	12		
1/516	8	12	8	12	12	12	12	12	15	12	15	12		
1/721	6	12	6	12	9	12	9	12	11	12	11	12		

\* 출력축 회전방향은 MOTOR의 회전방향과 같습니다.