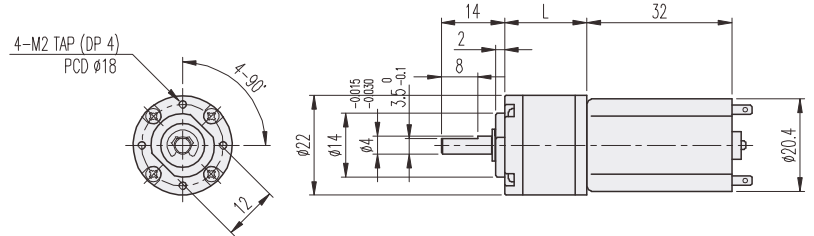


## K22-TYPE

Planetary GEARHEAD

### DIMENSIONS

#### K22-2032 SERIES



GEARHEAD LENGTH

RATIO	L	RATIO	L
1/4	14.4	1/198 ~ 1/455	25.35
1/14 ~ 1/19	18.05	1/742 ~ 1/1996	29
1/53 ~ 1/104	21.7		

#### MOTOR PERFORMANCE DATA

MODEL	ITEM	VOLTAGE (DC)	NO LOAD		AT MAX. EFF.			STALL		WEIGHT (g)
			mA	rpm	gf-cm	mA	rpm	A	gf-cm	
ND2032R1		12V	90	8000	25	250	6400	1	121	32
ND2032P2		24V	55	9000	25	150	7400	0.6	136	

#### AT MAXIMUM EFFICIENCY (2032 SERIES)

GEAR	MODEL	ND2032R1		ND2032P2	
		DC 12V		DC 24V	
		rpm	kgf-cm	rpm	kgf-cm
1/4		1600	0.07	1850	0.07
1/14		457	0.2	528	0.2
1/16		400	0.23	462	0.23
1/19		337	0.27	390	0.27
1/53		121	0.6	140	0.6
1/62		103	0.7	119	0.7
1/72		89	0.8	103	0.8
1/84		76	1	88	1
1/104		62	1.2	71	1.2
1/198		32	1.9	37	1.9
1/231		28	2.2	32	2.2
1/270		23.7	2.6	27.4	2.6
1/316		20.2	3	23.4	3
1/370		17.3	3	20	3
1/455		14	3	16.3	3
1/742		8.6	3	10	3
1/1014		6.3	3	7.3	3
1/1249		5.1	3	5.9	3
1/1621		3.9	3	4.6	3
1/1996		3.2	3	3.7	3

\* 출력축 회전방향은 MOTOR의 회전방향과 같습니다.