

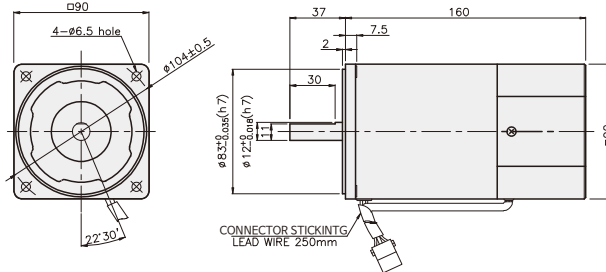
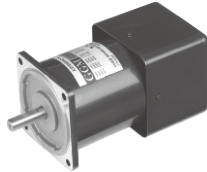
## SPEED CONTROL MOTOR - SU SERIES

60W

□90mm

REVERSIBLE MOTOR

K9RS60F□-SU



### SPECIFICATIONS

60W 30 minutes rating, four poles

Model	Voltage (V)	Frequency (Hz)	Speed (rpm)	Permissible Torque		Start T. (N·m/kgf·cm)	Current (A)	Condenser (μF)	
				1200rpm (N·m/kgf·cm)	90rpm (N·m/kgf·cm)				
K9R□60FJ-SU	100	50	90 ~ 1400	0.5/5	0.17/1.7	0.3/3	2.5	25	
			90 ~ 1700						
K9R□60FU-SU	110	60	90 ~ 1700	0.5/5	0.17/1.7	0.295/2.95	2.1	17	
	115						2.2		
K9R□60FL-SU	200	50	90 ~ 1400	0.5/5	0.15/1.5	0.26/2.6	0.72	6	
		60	90 ~ 1700	0.48/4.8	0.17/1.7	0.23/2.3	0.76		
K9R□60FC-SU	220	50	90 ~ 1400	0.5/5	0.15/1.5	0.3/3	0.95	5	
		60	90 ~ 1700	0.48/4.8	0.17/1.7	0.26/2.6	0.94		
		230	50	90 ~ 1400	0.5/5	0.15/1.5	0.3		1
			60	90 ~ 1700	0.48/4.8	0.17/1.7	0.26/2.6		1.2
K9R□60FD-SU	240	50	90 ~ 1400	0.5/5	0.15/1.5	0.32/3.2	1.2		

※ □ : SHAFT SHAPE ( S : STRAIGHT, P : PINION )

### RATED TORQUE OF GEARHEAD

#### ● Single-phase 100V/115V

unit = above : N·m / below : kgf·cm

Model	Ratio	3	3.6	5	6	7.5	9	10	12.5	15	18	20	25	30	36	40	50	60	75	90	100	120	150	180	200
Motor/Gearhead	Speed(rpm)																								
K9R□60F□-SU K9P□B, BF	1200	1.22	1.46	2.03	2.43	3.04	3.65	4.05	4.56	5.47	6.56	7.29	8.20	9.84	11.81	13.12	16.40	19.68	20	20	20	20	20	20	20
	90	0.41	0.50	0.69	0.83	1.03	1.24	1.38	1.55	1.86	2.23	2.48	2.79	3.35	4.02	4.46	5.58	6.69	7.53	9.03	10.04	12.05	15.06	18.07	20

#### ● Single-phase 200V/240V

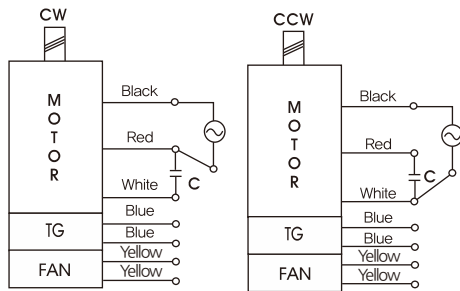
unit = above : N·m / below : kgf·cm

Model	Ratio	3	3.6	5	6	7.5	9	10	12.5	15	18	20	25	30	36	40	50	60	75	90	100	120	150	180	200	
Motor/Gearhead	Speed(rpm)																									
K9R□60F□-SU K9P□B, BF	1200	200V/220V 230V/240V 50Hz	1.22	1.46	2.03	2.43	3.04	3.65	4.05	4.56	5.47	6.56	7.29	8.20	9.84	11.81	13.12	16.40	19.68	20	20	20	20	20	20	
		200V/220V 230V/60Hz	1.17	1.40	1.94	2.33	2.92	3.50	3.89	4.37	5.25	6.30	7.00	7.87	9.45	11.34	12.60	15.75	18.90	20	20	20	20	20	20	
	90	200V/220V 230V/240V 50Hz	0.36	0.44	0.61	0.73	0.91	1.09	1.22	1.37	1.64	1.97	2.19	2.46	2.95	3.54	3.94	4.92	5.90	6.64	7.97	8.86	10.63	13.29	15.94	17.71
		200V/220V 230V/60Hz	0.41	0.50	0.69	0.83	1.03	1.24	1.38	1.55	1.86	2.23	2.48	2.79	3.35	4.02	4.46	5.58	6.69	7.53	9.03	10.04	12.05	15.06	18.07	20

- \* Gearhead and decimal gearhead are sold separately.
- \* The code in □ of gearhead model is for gear ratio.
- \*  color indicates that the output shaft of the geared motor rotates in the same direction as the output shaft of the motor. Others indicate rotation in the opposite direction.
- \* If you are to have less ratio than the ratio in the table, you can install the decimal gearhead, which has one tenth of the ratio, between the gearhead and the motor. In this case, the permissible torque is 3N·m/30kgf·cm.
- \* RPM is based on motor's synchronous rpm (50HZ:1500rpm, 60HZ:1800rpm) and calculated by dividing gear ratio. Actual rpm is 2~20% less than indicating rpm according to load size.

## GEARHEAD

### CONNECTION DIAGRAMS



※The direction of motor rotation is as viewed from the front shaft end of the motor

### DIMENSIONS

K9P□B

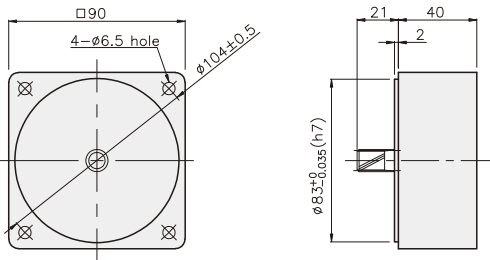


K9P□BF

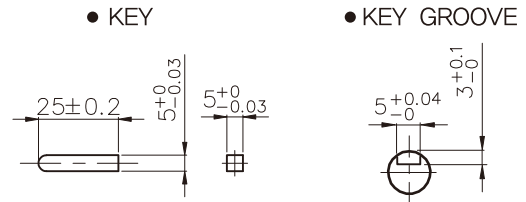


### DECIMAL GEARHEAD

K9P10BX

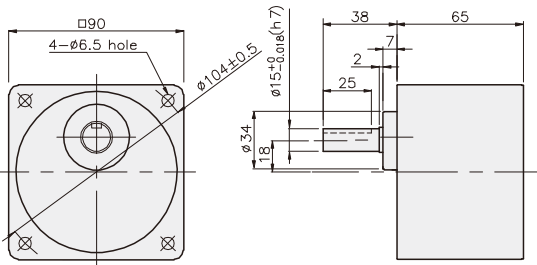


### KEY SPEC

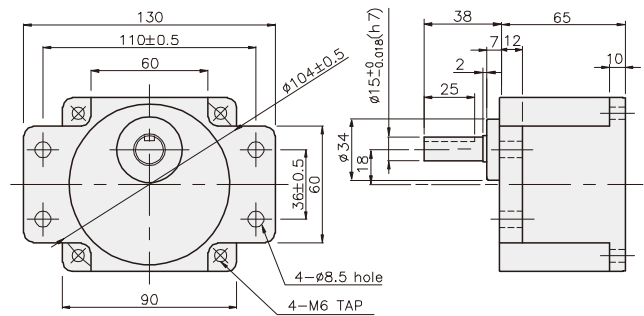


### GEARHEAD

K9P□B



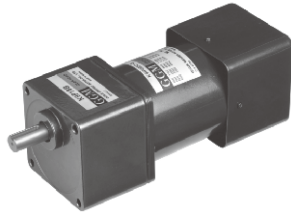
K9P□BF



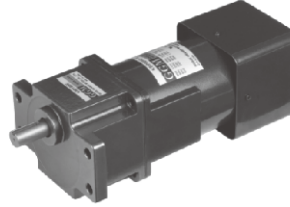
## GEARHEAD

### DIMENSIONS

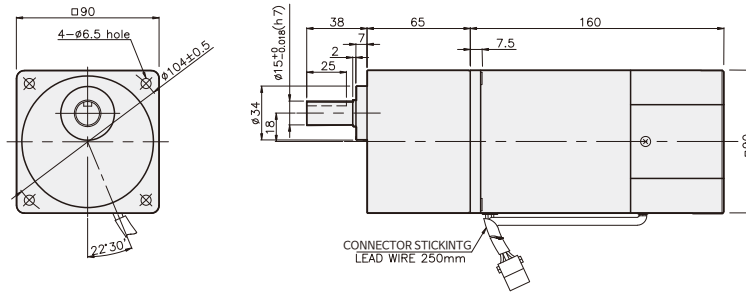
K9RP60F□-SU + K9P□B



K9RP60F□-SU + K9P□BF



K9RP60F□-SU + K9P□B



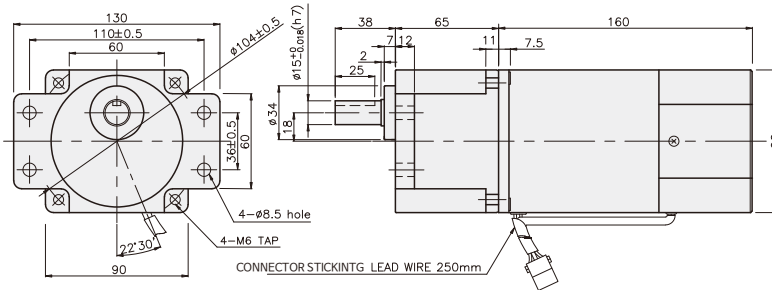
DIMENSION TABLE

PART No.	Application Model	Mounting BOLT
01	K9P3~200B	M6 P1.0 × 95
02	K9P10BX	M6 P1.0 × 140

WEIGHT

PART	WEIGHT(kg)	
MOTOR	3.06	
DECIMAL GEARHEAD	0.62	
GEAR HEAD	K9P3~10B	1.22
	K9P12.5~20B	1.32
	K9P25~60B	1.42
	K9P75~200B	1.45

K9RP60F□-SU + K9P□BF



DIMENSION TABLE

PART No.	Application Model	Mounting BOLT
01	K9P3~200BF	M6 P1.0 × 20
02	K9P10BX	M6 P1.0 × 65

WEIGHT

PART	WEIGHT(kg)	
MOTOR	3.58	
DECIMAL GEARHEAD	0.62	
GEAR HEAD	K9P3~10BF	1.22
	K9P12.5~20BF	1.30
	K9P25~60BF	1.42
	K9P75~200BF	1.44