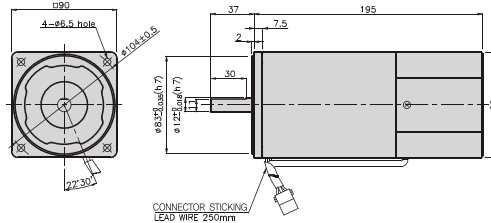


SPEED CONTROL MOTOR - SU SERIES

180W

□90mm

K9□180F□-SU



SPECIFICATIONS

180W continuous rating, four poles

Model	Voltage (V)	Frequency (Hz)	Speed Range (rpm)	Permissible Torque		Start T. (N*m/ Kgf*cm)	Current (A)	Condenser (μF)
				1200rpm (N*m/ Kgf*cm)	90rpm (N*m/ Kgf*cm)			
K9□180FJ-SU	100	50	90 ~ 1400	0,9/9	0,35/3,5	0,6/6	5,2	50
		60	90 ~ 1700			0,65/6,5	5,5	
K9□180FU-SU	110	60	90 ~ 1700	0,9/9	0,35/3,5	0,52/5,2	4,8	35
	115					0,55/5,5	5	
K9□180FL-SU	200	50	90 ~ 1400	0,9/9	0,3/3	0,5/5	2,2	12
		60	90 ~ 1700			0,42/4,2		
K9□180FC-SU	220	50	90 ~ 1400	0,9/9	0,3/3	0,45/4,5	2,2	8
		60	90 ~ 1700			0,42/4,2	2	
	230	50	90 ~ 1400	1/10	0,33/3,3	0,53/5,3	2,4	
		60	90 ~ 1700			0,5/5	2,2	
K9□180FD-SU	240	50	90 ~ 1400	1/10	0,33/3,3	0,6/6	2	8

* □ : SHAFT SHAPE (S : STRAIGHT, G : PINION)

RATED TORQUE OF GEARHEAD

● Single-phase 100V/115V

unit = above : N · m / below : kgfcm

Model	Ratio	Speed(rpm)																							
		3	3,6	5	6	7,5	9	10	12,5	15	18	20	25	30	36	40	50	60	75	90	100	120	150	180	200
K9□180F□-SU	1200	2,19	2,62	3,65	43,7	5,47	6,56	7,29	8,20	9,84	11,81	13,12	14,76	17,1	21,26	23,62	29,52	30	30	30	30	30	30	30	30
	K9P□BU, BUF	90	0,85	1,02	1,42	1,70	2,13	2,55	2,84	3,19	3,83	4,59	5,10	5,74	6,89	8,27	9,19	11,48	13,78	15,50	18,60	20,67	24,80	30	30

● Single-phase 200V/240V

unit = above : N · m / below : kgfcm

Model	Ratio	Speed(rpm)																							
		3	3,6	5	6	7,5	9	10	12,5	15	18	20	25	30	36	40	50	60	75	90	100	120	150	180	200
K9□180F□-SU	1200	200V/220V 50Hz/60Hz	2,19	2,62	3,65	43,7	5,47	6,56	7,29	8,20	9,84	11,81	13,12	14,76	17,1	21,26	23,62	29,52	30	30	30	30	30	30	30
		230V/50Hz/60Hz 240/50Hz	2,43	2,92	4,05	4,86	6,08	7,29	8,10	3,19	10,94	13,12	14,58	16,40	19,68	23,62	26,24	30	30	30	30	30	30	30	30
	90	200V/220V 50Hz/60Hz	0,73	0,87	1,22	1,46	1,82	2,19	2,43	2,73	3,28	3,94	4,37	4,92	5,90	7,09	7,87	9,84	11,81	13,29	15,94	17,71	21,26	26,57	30
		230V/50Hz/60Hz 240/50Hz	0,80	0,96	1,34	1,60	2,00	2,41	2,41	3,34	4,01	4,81	5,35	5,41	6,50	7,79	8,66	10,83	12,99	14,61	17,54	19,49	23,38	29,23	30

* Gearhead and decimal gearhead are sold separately.

* The code in □ of gearhead model is for gear ratio.

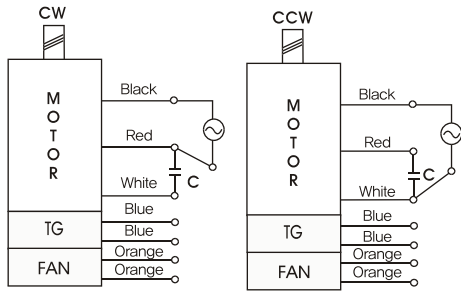
* ■ color indicates that the output shaft of the geared motor rotates in the same direction as the output shaft of the motor. Others indicate rotation in the opposite direction.

* If you are to have less ratio than the ratio in the table, you can install the decimal gearhead, which has one tenth of the ratio, between the gearhead and the motor. In this case, the permissible torque is 30N · m/300kgfcm.

* RPM is based on motor's synchronous rpm (50HZ:1500rpm, 60HZ:1800rpm) and calculated by dividing gear ratio. Actual rpm is 2~20% less than indicating rpm according to load size.

GEARHEADS

CONNECTION DIAGRAMS



※The direction of motor rotation is as viewed from the front shaft end of the motor

DIMENSIONS

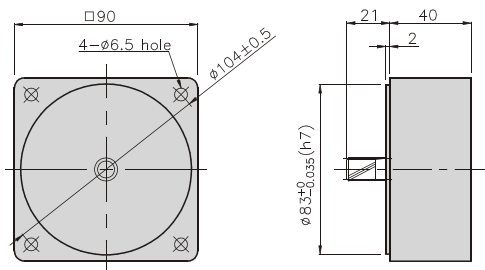
K9P□BU



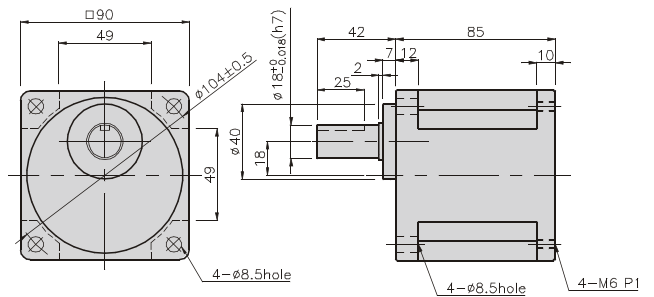
K9P□BUF



DECIMAL GEARHEAD
K9P10BX



GEARHEAD
K9P□BU



GEARHEAD
K9P□BUF

