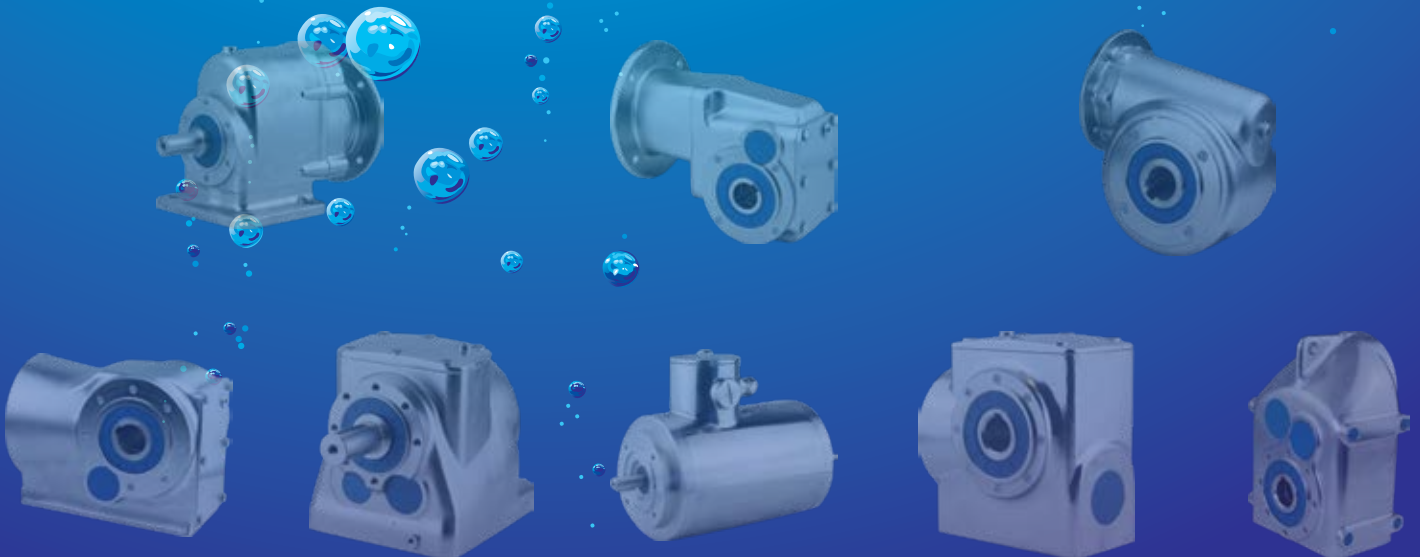




Stainless Steel Electric Motors



FP2SS Stainless Steel Electric Motors

DERTEC Stainless steel motors are designed with the food industry in mind.

They form part of our continuous search for motor options to improve this moisture and bacteria sensitive industry. We have managed to create a product that can be used under the most common and demanding operating conditions.

Like our drives, the design is smooth and round to avoid dirt traps and achieve easy cleanability.

Special attention was paid to the shape of terminal boxes and bearingshields to limit dirt accumulation to a minimum.

All of our motors are (like our gearboxes) built to order, according our customers demands.

Together with OEM'S we find innovative solutions for their specific demand.

It might be clear that Stainless drives add value to company's assets.

Not only because of the High Hygienic standards and Reliability, it also saves money in maintenance, cleaning, and during construction of the lines.

Stainless Steel drives are very sustainable and offer, if well selected, even energy saving options.

Our Stainless motors have the following premium features :

Dutch product

Designed, assembled and quality controlled in our Dutch facilities

O- Ring sealed endbells

Laser engraved tagplate

Inverter rated Class H insulated windings

Double sealed bearings

Bearings made with HT Hydrofobe Food grease

TIG welded terminalbox and footplates

Hygienic SS304 Stainless Steel housing, endbell, feet and junctionbox

Stainless Steel shaft with Premium surface hardness

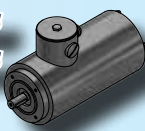
Blue Foodgrade engineered shaft seals

Standard equipped with PTC's and Klixon's

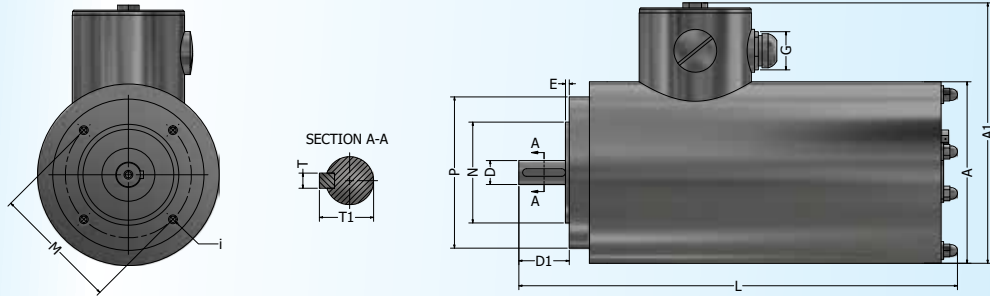
Executions in B3, B14a, B5 and B14b

Shaft executions for integrated motor connection (shouldered shaft)

Equipped with anti condensation aerators

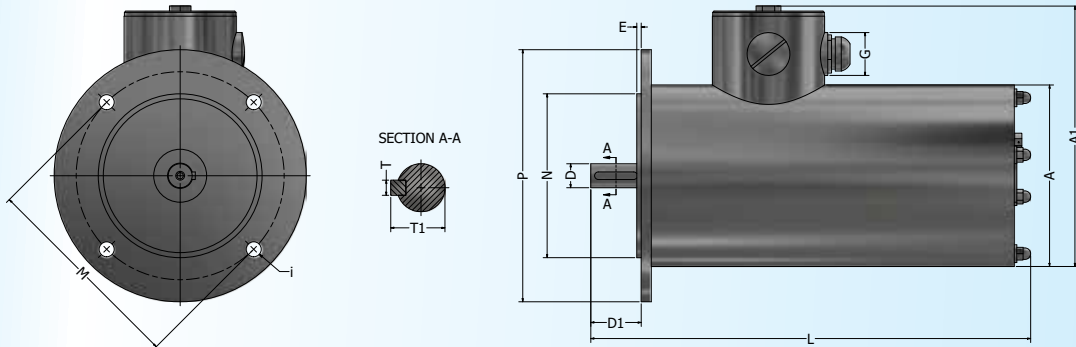


TENV Motors B14A Flange



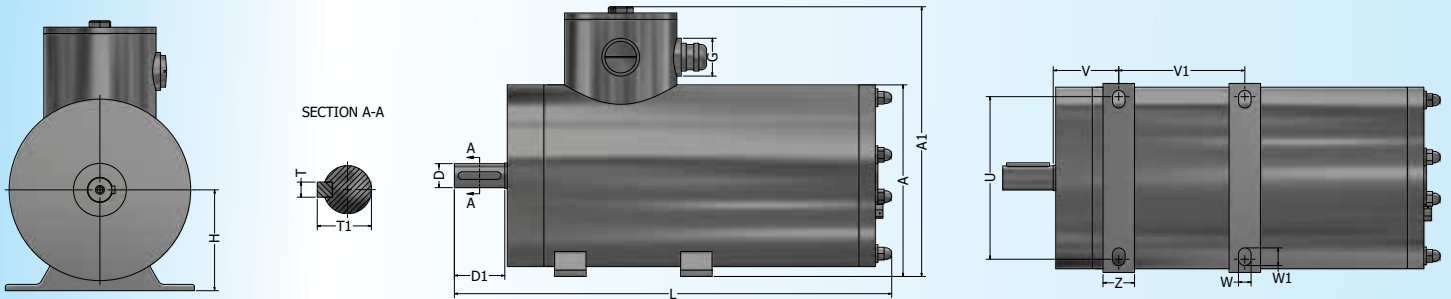
Type	Power	Nr. of Pole's	D	D1	E	i	A	A1	G	P	M	N	T	T1	L	Shaft hole
6312	0.18 kW	2	11	23	2.5	M5	114	175	M20	90	75	60	4	12.5	212	M4
6322	0.25 kW	2	11	23	2.5	M5	114	175	M20	90	75	60	4	12.5	212	M4
6324	0.18 kW	4	11	23	2.5	M5	114	175	M20	90	75	60	4	12.5	237	M4
7112	0.37 kW	2	14	30	2.5	M6	134	196	M20	105	85	70	5	16	243	M5
7122	0.55 kW	2	14	30	2.5	M6	134	196	M20	105	85	70	5	16	273	M5
7114	0.25 kW	4	14	30	2.5	M6	134	196	M20	105	85	70	5	16	243	M5
7124	0.37 kW	4	14	30	2.5	M6	134	196	M20	105	85	70	5	16	253	M5
7116	0.18 kW	6	14	30	2.5	M6	134	196	M20	105	85	70	5	16	253	M5
7126	0.25 kW	6	14	30	2.5	M6	134	196	M20	105	85	70	5	16	273	M5
8012	0.75 kW	2	19	40	3	M6	144	207	M20	120	100	80	6	21.5	338	M6
8014	0.55 kW	4	19	40	3	M6	144	207	M20	120	100	80	6	21.5	308	M6
8024	0.75 kW	4	19	40	3	M6	144	207	M20	120	100	80	6	21.5	348	M6
8016	0.37 kW	6	19	40	3	M6	144	207	M20	120	100	80	6	21.5	308	M6
8026	0.55 kW	6	19	40	3	M6	144	207	M20	120	100	80	6	21.5	348	M6
90S-6	0.75 kW	6	24	50	3	M8	164	229	M25	140	115	95	8	27	394	M8

TENV Motors B5 Flange



Type	Power	Nr. of Pole's	D	D1	E	i	A	A1	G	P	M	N	T	T1	L	Shaft hole
6312	0.18 kW	2	11	23	2.5	10	114	175	M20	140	115	95	4	12.5	212	M4
6322	0.25 kW	2	11	23	2.5	10	114	175	M20	140	115	95	4	12.5	212	M4
6324	0.18 kW	4	11	23	2.5	10	114	175	M20	140	115	95	4	12.5	237	M4
7112	0.37 kW	2	14	30	3.5	10	134	196	M20	160	130	110	5	16	243	M5
7122	0.55 kW	2	14	30	3.5	10	134	196	M20	160	130	110	5	16	273	M5
7114	0.25 kW	4	14	30	3.5	10	134	196	M20	160	130	110	5	16	243	M5
7124	0.37 kW	4	14	30	3.5	10	134	196	M20	160	130	110	5	16	253	M5
7116	0.18 kW	6	14	30	3.5	10	134	196	M20	160	130	110	5	16	253	M5
7126	0.25 kW	6	14	30	3.5	10	134	196	M20	160	130	110	5	16	273	M5
8012	0.75 kW	2	19	40	3.5	12	144	207	M20	200	165	130	6	21.5	338	M6
8014	0.55 kW	4	19	40	3.5	12	144	207	M20	200	165	130	6	21.5	308	M6
8024	0.75 kW	4	19	40	3.5	12	144	207	M20	200	165	130	6	21.5	348	M6
8016	0.37 kW	6	19	40	3.5	12	144	207	M20	200	165	130	6	21.5	308	M6
8026	0.55 kW	6	19	40	3.5	12	144	207	M20	200	165	130	6	21.5	348	M6
90S-6	0.75 kW	6	24	50	3.5	12	164	229	M25	200	165	130	8	27	394	M8

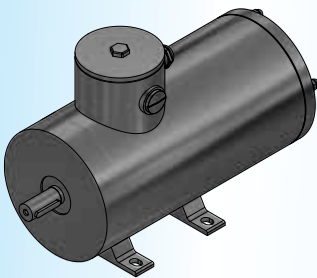
TENV Motors B3



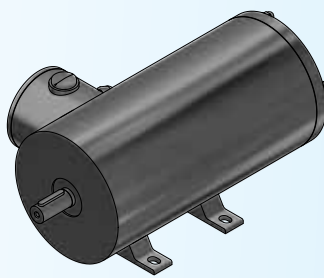
Type	Power	Nr. of Pole's	D	D1	H	A	A1	G	L	T	T1	U	V	V1	W	W1	Z	Shaft hole
6312	0.18 kW	2	11	23	63	120	180	M20	212	4	12.5	100	40	80	7	10	25	M4
6322	0.25 kW	2	11	23	63	120	180	M20	212	4	12.5	100	40	80	7	10	25	M4
6324	0.18 kW	4	11	23	63	120	180	M20	237	4	12.5	100	40	80	7	10	25	M4
7112	0.37 kW	2	14	30	71	138	200	M20	243	5	16	112	45	90	7	10	25	M5
7122	0.55 kW	2	14	30	71	138	200	M20	273	5	16	112	45	90	7	10	25	M5
7114	0.25 kW	4	14	30	71	138	200	M20	243	5	16	112	45	90	7	10	25	M5
7124	0.37 kW	4	14	30	71	138	200	M20	253	5	16	112	45	90	7	10	25	M5
7116	0.18 kW	6	14	30	71	138	200	M20	253	5	16	112	45	90	7	10	25	M5
7126	0.25 kW	6	14	30	71	138	200	M20	273	5	16	112	45	90	7	10	25	M5
8012	0.75 kW	2	19	40	80	152	215	M20	338	6	21.5	125	50	100	10	14	25	M6
8014	0.55 kW	4	19	40	80	152	215	M20	308	6	21.5	125	50	100	10	14	25	M6
8024	0.75 kW	4	19	40	80	152	215	M20	348	6	21.5	125	50	100	10	14	25	M6
8016	0.37 kW	6	19	40	80	152	215	M20	308	6	21.5	125	50	100	10	14	25	M6
8026	0.55 kW	6	19	40	80	152	215	M20	348	6	21.5	125	50	100	10	14	25	M6
90S-6	0.75 kW	6	24	50	90	172	237	M25	394	8	28	140	56	100	10	14	25	M8

Possible feet mounting positions

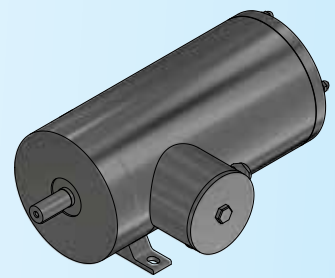
Pos 1

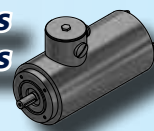


Pos 2

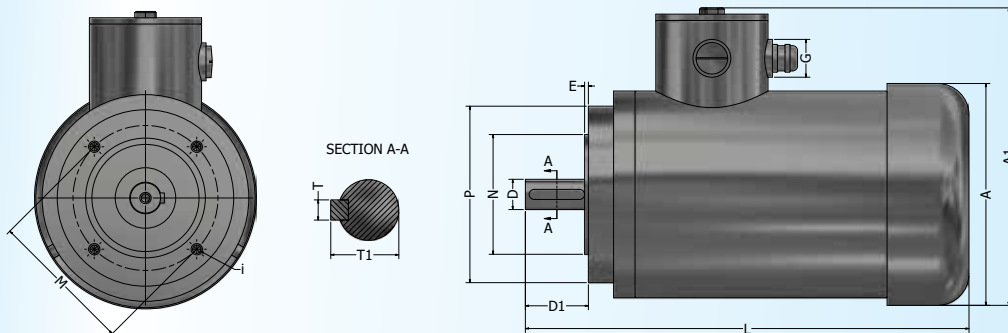


Pos 4



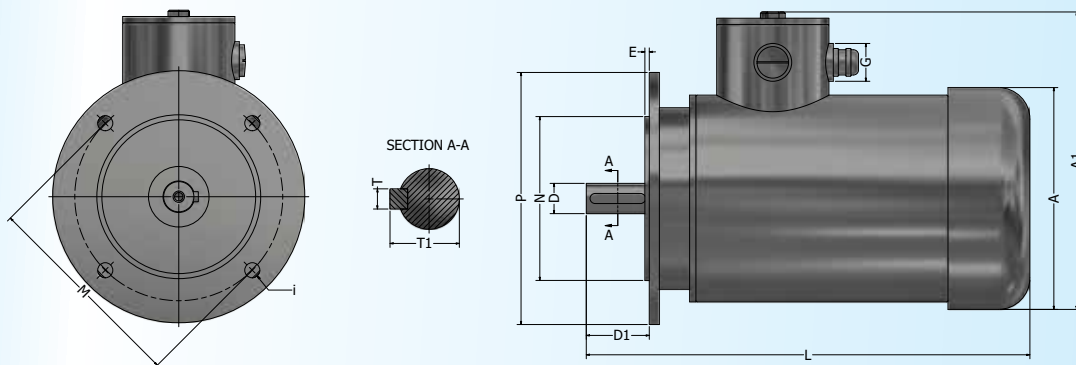


TEFC Motors B14A



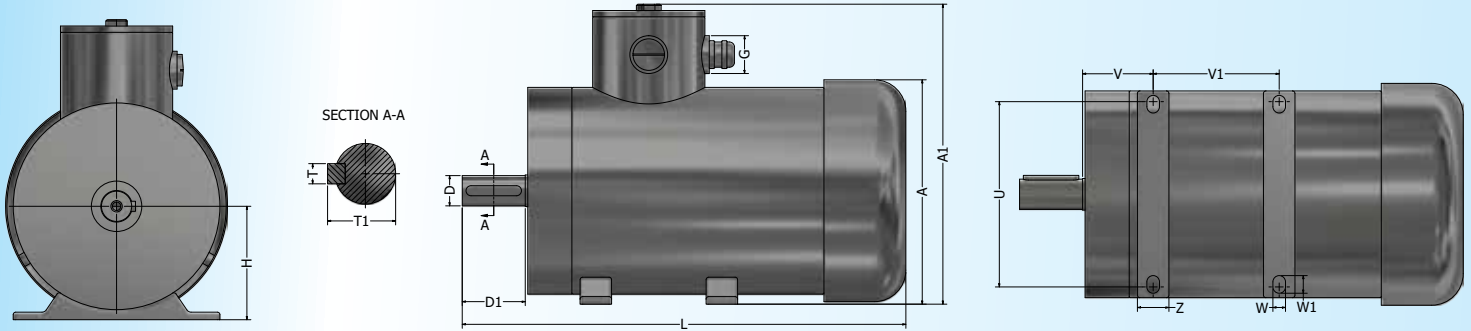
Type	Power	Nr. of Pole's	D	D1	E	i	A	A1	G	P	M	N	T	T1	L	Shaft hole
8022	1.1 kW	2	19	40	3	M6	156	215	M20	120	100	80	6	21.5	362	M6
90S-2	1.5 kW	2	24	50	3	M8	176	237	M25	140	115	95	8	27	367	M8
90L-2	2.2 kW	2	24	50	3	M8	176	237	M25	140	115	95	8	27	391	M8
90S-4	1.1 kW	4	24	50	3	M8	176	237	M25	140	115	95	8	27	351	M8
90L-4	1.5 kW	4	24	50	3	M8	176	237	M25	140	115	95	8	27	367	M8
90L-6	1.1 kW	6	24	50	3	M8	176	237	M25	140	115	95	8	27	417	M8
100L-2	3.0 kW	2	28	60	3	M8	203	269	M25	160	130	110	8	31	479	M10
100L1-4	2.2 kW	4	28	60	3.5	M8	203	269	M25	160	130	110	8	31	464	M10
100L2-4	3.0 kW	4	28	60	3.5	M8	203	269	M25	160	130	110	8	31	509	M10
100L1-6	1.5 kW	6	28	60	3.5	M8	203	269	M25	160	130	110	8	31	489	M10
112M-2	4.0 kW	2	28	60	3.5	M8	218	286	M25	160	130	110	8	31	488	M10
112M-4	4.0 kW	4	28	60	3.5	M8	218	286	M25	160	130	110	8	31	488	M10
112M-6	2.2 kW	6	28	60	3.5	M8	218	286	M25	160	130	110	8	31	488	M10
132S1-2	5.5 kW	2	38	80	3.5	M10	256	324	M25	200	165	130	10	41	506	M12
132S2-2	7.5 kW	2	38	80	3.5	M10	256	324	M25	200	165	130	10	41	506	M12
132S-4	5.5 kW	4	38	80	3.5	M10	256	324	M25	200	165	130	10	41	511	M12
132M-4	7.5 kW	4	38	80	3.5	M10	256	324	M25	200	165	130	10	41	536	M12

TEFC Motors B5



Type	Power	Nr. of Pole's	D	D1	E	i	A	A1	G	P	M	N	T	T1	L	Shaft hole
8022	1.1 kW	2	19	40	3.5	12	156	215	M20	200	165	130	6	21.5	362	M6
90S-2	1.5 kW	2	24	50	3.5	12	176	237	M25	200	165	130	8	27	367	M8
90L-2	2.2 kW	2	24	50	3.5	12	176	237	M25	200	165	130	8	27	391	M8
90S-4	1.1 kW	4	24	50	3.5	12	176	237	M25	200	165	130	8	27	351	M8
90L-4	1.5 kW	4	24	50	3.5	12	176	237	M25	200	165	130	8	27	367	M8
90L-6	1.1 kW	6	24	50	3.5	12	176	237	M25	200	165	130	8	27	417	M8
100L-2	3.0 kW	2	28	60	4	15	203	269	M25	250	215	180	8	31	479	M10
100L1-4	2.2 kW	4	28	60	4	15	203	269	M25	250	215	180	8	31	464	M10
100L2-4	3.0 kW	4	28	60	4	15	203	269	M25	250	215	180	8	31	509	M10
100L1-6	1.5 kW	6	28	60	4	15	203	269	M25	250	215	180	8	31	489	M10
112M-2	4.0 kW	2	28	60	4	15	218	286	M25	250	215	180	8	31	488	M10
112M-4	4.0 kW	4	28	60	4	15	218	286	M25	250	215	180	8	31	488	M10
112M-6	2.2 kW	6	28	60	4	15	218	286	M25	250	215	180	8	31	488	M10
132S1-2	5.5 kW	2	38	80	4	15	256	324	M25	300	265	230	10	41	506	M12
132S2-2	7.5 kW	2	38	80	4	15	256	324	M25	300	265	230	10	41	506	M12
132S-4	5.5 kW	4	38	80	4	15	256	324	M25	300	265	230	10	41	511	M12
132M-4	7.5 kW	4	38	80	4	15	256	324	M25	300	265	230	10	41	536	M12

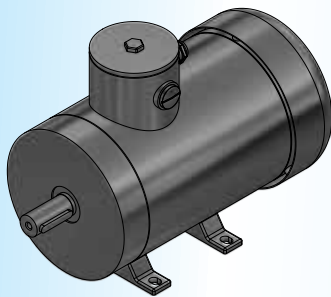
TEFC Motors B3



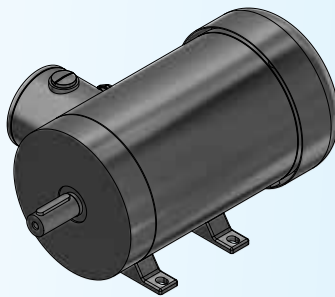
Type	Power	Nr. of Pole's	D	D1	H	A	A1	G	L	T	T1	U	V	V1	W	W1	Z	Shaft hole
8022	1.1 kW	2	19	40	80	156	215	M20	362	6	21.5	125	50	100	10	14	25	M6
90S-2	1.5 kW	2	24	50	90	164	237	M25	367	8	27	140	56	100	10	14	25	M8
90L-2	2.2 kW	2	24	50	90	164	237	M25	391	8	27	140	56	125	10	14	25	M8
90S-4	1.1 kW	4	24	50	90	164	237	M25	351	8	27	140	56	100	10	14	25	M8
90L-4	1.5 kW	4	24	50	90	164	237	M25	367	8	27	140	56	125	10	14	25	M8
90L-6	1.1 kW	6	24	50	90	164	237	M25	417	8	27	140	56	125	10	14	25	M8
100L-2	3.0 kW	2	28	60	100	190	269	M25	479	8	31	160	63	140	12	16	30	M10
100L1-4	2.2 kW	4	28	60	100	190	269	M25	464	8	31	160	63	140	12	16	30	M10
100L2-4	3.0 kW	4	28	60	100	190	269	M25	509	8	31	160	63	140	12	16	30	M10
100L1-6	1.5 kW	6	28	60	100	190	269	M25	489	8	31	160	63	140	12	16	30	M10
112M-2	4.0 kW	2	28	60	112	220	286	M25	488	8	31	190	70	140	12	16	40	M10
112M-4	4.0 kW	4	28	60	112	220	286	M25	488	8	31	190	70	140	12	16	40	M10
112M-6	2.2 kW	6	28	60	112	220	286	M25	488	8	31	190	70	140	12	16	40	M10
132S1-2	5.5 kW	2	38	80	132	246	324	M25	506	10	41	216	89	140	12	16	40	M12
132S2-2	7.5 kW	2	38	80	132	246	324	M25	506	10	41	216	89	140	12	16	40	M12
132S-4	5.5 kW	4	38	80	132	246	324	M25	511	10	41	216	89	140	12	16	40	M12
132M-4	7.5 kW	4	38	80	132	246	324	M25	536	10	41	216	89	178	12	16	40	M12

Possible feet mounting positions

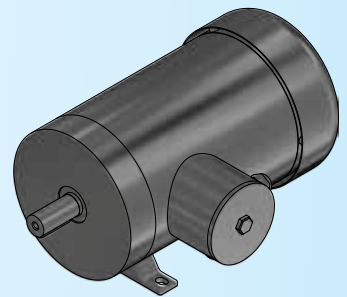
Pos 1

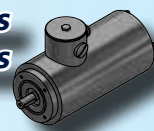


Pos 2



Pos 4





2 Pole Motors

IE3 Premium Efficiency

Type	Frequency [Hz]	Nr. of Pole's	Power [kW]	Speed [rpm]	Power Δ [V]	Power Υ [V]	Current Δ [A]	Current Υ [Y]	Efficiency η 100%	Power Factor Cos ϕ 100%	TN [Nm]	Tst [Nm]	Tmax [Nm]	IS Δ [Nm]	IS Υ [Nm]	Weight [Kg]
6312	50	2	0.18 kW	2800	230	400	0.83	0.48	68	0.8	0.61	1.34	1.34	4.56	2.64	8.7
	60	2	0.22 kW	3360	276	480	0.86	0.49	66					4.73	2.69	
6322	50	2	0.25 kW	2850	230	400	1.08	0.62	76.7	0.77	0.84	1.85	1.85	5.94	3.41	8.7
	60	2	0.30 kW	3420	276	480	1.16	0.67	69.5					6.38	3.69	
7112	50	2	0.37 kW	2830	230	400	1.38	0.80	78	0.85	1.25	2.75	2.75	8.42	4.88	12.2
	60	2	0.44 kW	3396	276	480	1.53	0.88	73.3					9.33	5.37	
7122	50	2	0.55 kW	2880	230	400	2.06	1.19	77.8	0.86	1.82	4.0	4.19	12.57	7.26	14.0
	60	2	0.66 kW	3456	276	480	2.11	1.21	76.0					12.9	7.38	
8012	50	2	0.75 kW	2920	230	400	2.73	1.57	81.0	0.85	2.45	5.39	5.64	16.65	9.58	17
	60	2	0.90 kW	3504	276	480	2.73	1.57	81.0					16.65	9.58	
8022	50	2	1.1 kW	2900	230	400	3.76	2.16	84.5	0.87	3.62	7.96	8.33	26.32	15.12	21
	60	2	1.3 kW	3480	276	480	3.87	2.22	83.0					27.09	15.54	
90S-2	50	2	1.5 kW	2830	230	400	5.21	3.00	85.0	0.84	5.06	11.13	11.64	36.47	21	24
	60	2	1.8 kW	3396	276	480	5.40	3.11	84.0					37.8	21.77	
90L-2	50	2	2.2 kW	2870	230	400	7.38	4.25	88	0.85	7.32	16.10	16.84	51.66	29.75	30
	60	2	2.6 kW	3444	276	480	7.52	4.33	87.4					52.64	30.31	
100L-2	50	2	3.0 kW	2910	230	400	9.61	5.52	87.1	0.90	9.85	21.67	22.65	72.1	41.4	44
	60	2	3.6 kW	3492	276	480	9.56	5.50	87.5					71.7	41.25	
112M-2	50	2	4.0 kW	2930	400	690	7.28	4.22	88.1	0.89	13.04	28.68	29.99	54.6	31.65	52
	60	2	4.8 kW	3516	480	830	7.74	6.45	88.5					58.05	48.37	
132S1-2	50	2	5.5 kW	2920	400	690	10.11	5.86	89.2	0.88	17.99	39.58	41.38	75.82	43.95	77
	60	2	6.6 kW	3504	480	830	10.65	8.87	88.4					79.87	66.52	
132S2-2	50	2	7.5 kW	2950	400	690	13.44	7.79	90.5	0.89	24.28	53.42	55.84	100.8	58.42	80
	60	2	9.0 kW	3540	480	830	14.18	11.82	89.5					106.35	88.65	

4 Pole Motors

IE3 Premium Efficiency

Type	Frequency [Hz]	Nr. of Pole's	Power [kW]	Speed [rpm]	Power Δ [V]	Power Υ [V]	Current Δ [A]	Current Υ [Y]	Efficiency η 100%	Power Factor Cos ϕ 100%	TN [Nm]	Tst [Nm]	Tmax [Nm]	IS Δ [Nm]	IS Υ [Nm]	Weight [Kg]
6324	50	4	0.18 kW	1420	230	400	0.95	0.55	69.9	0.68	1.21	2.54	2.66	4.18	2.42	8.7
	60	4	0.22 kW	1704	276	480	0.98	0.56	69.0					4.31	2.46	
7114	50	4	0.25 kW	1450	230	400	1.17	0.67	79.0	0.69	1.65	3.47	3.63	6.08	3.48	11.5
	60	4	0.30 kW	1740	276	480	1.12	0.64	80.0					5.82	3.33	
7124	50	4	0.37 kW	1420	230	400	1.65	0.95	81.5	0.70	2.49	5.23	5.48	8.58	4.94	13
	60	4	0.44 kW	1704	276	480	1.59	0.91	79.3					8.27	4.73	
8014	50	4	0.55 kW	1440	230	400	2.25	1.29	81.8	0.75	3.65	8.76	8.39	11.7	6.71	17.6
	60	4	0.66 kW	1728	276	480	2.24	1.29	82.0					11.65	6.71	
8024	50	4	0.75 kW	1460	230	400	3.06	1.76	84.4	0.74	4.91	11.29	11.29	18.36	10.56	21
	60	4	0.90 kW	1752	276	480	2.99	1.72	84.0					17.94	10.32	
90S-4	50	4	1.1 kW	1460	230	400	4.02	2.31	82.7	0.83	7.20	16.56	16.56	24.12	13.86	24
	60	4	1.3 kW	1752	276	480	4.06	2.33	82.0					24.36	13.98	
90L-4	50	4	1.5 kW	1460	230	400	5.45	3.14	86.3	0.79	9.81	22.56	22.56	32.7	18.84	28
	60	4	1.8 kW	1752	276	480	5.55	3.19	87.0					33.3	19.14	
100L1-4	50	4	2.2 kW	1450	230	400	7.55	4.34	87.1	0.84	14.49	33.33	33.33	52.85	30.38	41
	60	4	2.6 kW	1740	276	480	7.67	4.41	86.7					53.69	30.87	
100L2-4	50	4	3.0 kW	1450	230	400	10.56	6.07	87.0	0.82	19.76	45.44	45.44	73.92	42.49	49
	60	4	3.6 kW	1740	276	480	10.40	5.98	89.4					72.8	41.86	
112M-4	50	4	4.0 kW	1460	400	690	8.20	4.75	88.0	0.80	26.16	60.17	60.17	57.4	33.25	55
	60	4	4.8 kW	1752	480	830	8.52	8.52	88.4					59.64	59.64	
132S-4	50	4	5.5 kW	1460	400	690	10.56	6.17	89.8	0.83	35.98	82.75	82.75	74.55	43.19	90
	60	4	6.6 kW	1752	480	830	11.26	9.39	89.7					78.82	65.73	
132M-4	50	4	7.5 kW	1460	400	690	14.78	8.57	90.4	0.81	49.06	112.84	112.84	103.46	59.99	102
	60	4	9.0 kW	1752	480	830	15.39	12.83	89.5					107.73	89.81	

6 Pole Motors IE3 Premium Efficiency

Type	Frequency [Hz]	Nr. of Pole's	Power [kW]	Speed [rpm]	Power Δ [V]	Power Y [V]	Current Δ [A]	Current Y [Y]	Efficiency η 100%	Power Factor Cos Φ 100%	TN [Nm]	Tst [Nm]	Tmax [Nm]	IS Δ [Nm]	IS Y [Nm]	Weight [Kg]
7116	50	6	0.18 kW	940	230	400	0.90	0.52	75.8	0.66	1.83	3.47	3.66	3.6	2.08	13
	60	6	0.22 kW	1128	276	480	0.96	0.55	73.0					3.84	2.2	
7126	50	6	0.25 kW	940	230	400	1.33	0.77	76.0	0.62	2.54	4.83	5.08	5.32	3.08	14
	60	6	0.30 kW	1128	276	480	1.37	0.79	74.0					5.48	3.16	
8016	50	6	0.37 kW	980	230	400	1.81	1.04	73.5	0.70	3.61	6.86	7.22	8.51	4.89	17
	60	6	0.44 kW	1176	276	480	1.80	0.91	73.0					8.46	4.28	
8026	50	6	0.55 kW	970	230	400	2.35	1.35	82.6	0.71	5.41	10.28	11.36	11.04	6.35	18
	60	6	0.66 kW	1164	276	480	2.07	1.19	81.7					9.73	5.59	
90S-6	50	6	0.75 kW	960	230	400	3.40	1.96	79.0	0.70	7.46	14.92	15.66	18.7	10.78	23
	60	6	0.90 kW	1152	276	480	2.99	1.72	78.0					16.45	9.46	
90L-6	50	6	1.1 kW	960	230	400	5.38	3.09	84.1	0.61	10.94	21.88	22.97	29.59	16.99	28
	60	6	1.3 kW	1152	276	480	4.73	2.73	83.0					26.01	15.01	
100L1-6	50	6	1.5 kW	960	230	400	6.10	3.51	84.5	0.73	14.92	29.84	31.33	33.55	19.30	42
	60	6	1.8 kW	1152	276	480	5.24	3.02	84.3					28.82	16.61	
112M-6	50	6	2.2 kW	970	230	400	8.78	5.05	85.0	0.74	21.66	43.32	45.49	48.29	27.78	53
	60	6	2.6 kW	1164	276	480	8.88	5.11	84.0					48.84	28.10	