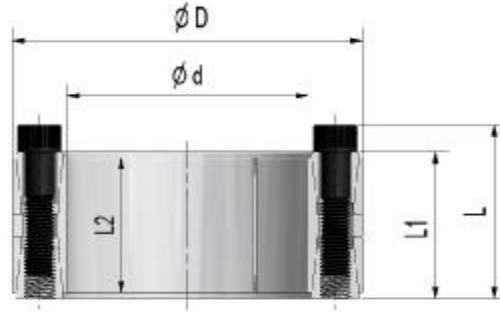


Locking assembly MAV 1800

rev. 0



Medium torque capacity
 Self-locking & self-centering
 Axial fixation of hub during tightening: yes
 Max tolerances: shaft h8; hub bore H8
 Shaft / hub bore max surface finish: $Ra \leq 3.2 \mu m$

Example of order: MAV1800 - 100 x 145 (d x D)

M_a : screw tightening torque
 M_t : transmissible torque ($F_{ax}=0$)
 F_{ax} : transmissible axial load ($M_t=0$)
 p_s : shaft pressure
 p_h : hub pressure

DIMENSIONS					SCREWS UNI 5931 - 12.9		PERFORMANCES				WEIGHT	
d	x	D	L ₂	L ₁	L	size	M _a	M _t	F _{ax}	p _s	p _h	kg
mm	mm	mm	mm	mm	mm		Nm	Nm	kN	N/mm ²	N/mm ²	
100	x	145	60	65	75	M 10	83	6700	134	87	60	3,8
110	x	155	60	65	75	M 10	83	8200	149	88	62	4,1
120	x	165	60	65	75	M 10	83	10700	179	96	70	4,5
130	x	180	68	74	84	M 10	83	14500	223	99	72	6,1
140	x	190	68	74	84	M 10	83	15600	223	92	68	6,6
150	x	200	68	74	84	M 10	83	17900	238	92	69	7,0
160	x	210	68	74	84	M 10	83	22000	274	97	74	7,4
170	x	225	75	81	93	M 12	145	27700	325	101	76	9,4
180	x	235	75	81	93	M 12	145	31200	347	101	77	10
190	x	250	88	94	106	M 12	145	37100	390	92	70	13
200	x	260	88	94	106	M 12	145	43400	434	97	75	14
220	x	285	98	104	116	M 12	145	55000	501	84	65	18
240	x	305	98	104	116	M 12	145	70000	586	88	69	20
260	x	325	98	104	116	M 12	145	90000	695	91	73	21
280	x	355	120	126	140	M 14	230	120000	859	98	77	32
300	x	375	120	126	140	M 14	230	126000	839	92	74	35
320	x	405	135	142	158	M 16	355	185000	1156	107	85	48
340	x	425	135	142	158	M 16	355	201000	1184	101	81	51
360	x	455	158	165	183	M 18	485	216000	1201	79	63	70
380	x	475	158	165	183	M 18	485	257000	1352	85	68	74
400	x	495	158	165	183	M 18	485	320000	1602	95	77	78
420	x	515	158	165	183	M 18	485	349000	1660	91	74	82
440	x	545	172	180	200	M 20	690	394000	1789	87	70	102
460	x	565	172	180	200	M 20	690	411000	1789	84	68	106
480	x	585	172	180	200	M 20	690	466000	1940	89	73	111
500	x	605	172	180	200	M 20	690	485000	1940	85	70	115
520	x	630	190	200	220	M 20	690	540000	2070	79	65	140
540	x	650	190	200	220	M 20	690	560000	2070	77	64	146
560	x	670	190	200	220	M 20	690	650000	2329	83	69	152
580	x	690	190	200	220	M 20	690	680000	2329	80	67	157
600	x	710	190	200	220	M 20	690	700000	2329	77	65	162
620	x	730	190	200	220	M 20	690	720000	2329	75	64	167
640	x	750	190	200	220	M 20	690	750000	2329	73	62	172

Information subject to change without prior notification, © MAV S.p.A.