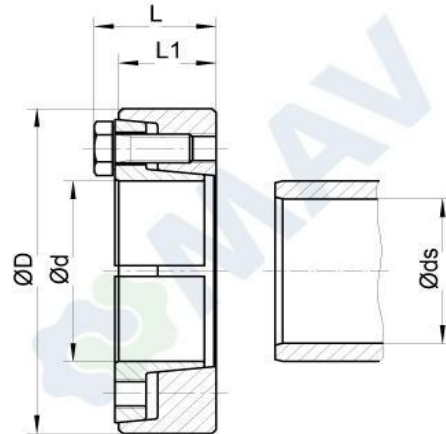


Shrink Disc MAV 3209 heavy duty

Features:

- shaft to hollow shaft connection
- 2-part design
- not self-locking
- screws DIN 931/933 grade 12.9
- shaft / hub surface finish Ra < 3,2 µm
- hub bore / shaft fitting tolerance:

shaft size ds from	to	ISO tolerances	max clearance mm
6	10	H6 - j6	0,011
11	18		0,014
19	30		0,017
31	50	H6 - h6	0,032
51	80	H6 - g6	0,048
81	120	H7 - g6	0,069
121	180		0,079
181	250		0,090
251	315		0,101
316	400		0,111
401	500		0,123



Ma: screw tightening torque
 Mt: max. transmissible torque (Fax=0 kN)
 Fax: max. transmissible axial load (Mt=0Nm)
 Ps: contact pressure on shaft
 Ph: contact pressure on hub OD

Example of order: MAV3209 – 155 x 263

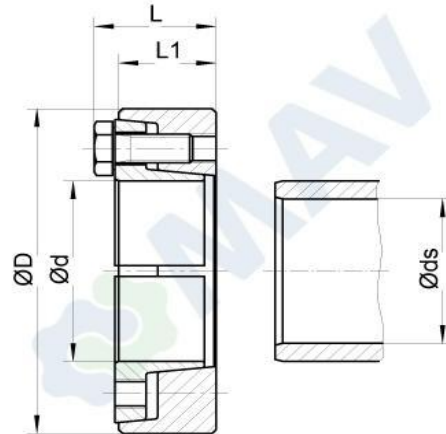
Dimensions				Screws		Performance				Weight
ds mm	d x D mm	L mm	L1 mm	size	Ma Nm	Mt Nm	Fax kN	Ps N/mm ²	Ph N/mm ²	kg
95	140 x 230	84	74	M16	295	26 000	547	204	273	14
100						30 100	603	213	273	
105						34 600	660	222	273	
105	155 x 263	90	80	M16	295	37 200	710	217	281	20
110						42 400	771	225	281	
115						47 800	833	233	281	
115	165 x 290	98.0	88	M16	295	52 700	918	235	290	29
120						59 000	985	242	290	
125						64 400	1 032	243	290	
125	175 x 300	98.0	88	M16	295	70 300	1 125	265	319	29
130						77 800	1 198	272	319	
135						85 900	1 273	278	319	
135	185 x 320	124.5	112	M20	570	104 000	1 551	265	313	44
140						115 000	1 643	271	313	
145						125 000	1 735	276	313	
150	200 x 340	124.5	112	M20	570	121 000	1 620	249	289	49
155						132 000	1 705	254	289	
160						143 000	1 791	258	289	
160	220 x 370	146.5	134	M20	570	154 000	1 932	225	265	69
165						167 000	2 028	229	265	
170						180 000	2 124	233	265	
170	240 x 405	156.5	144	M20	570	193 000	2 277	237	277	89
180						223 000	2 481	244	277	
190						252 000	2 653	247	277	
190	260 x 430	172.5	160	M20	570	283 000	2 984	245	283	109
200						322 000	3 222	251	283	
210						363 000	3 463	257	283	
210	280 x 460	187.0	172	M24	980	377 000	3 588	245	277	134
220						422 000	3 840	250	277	
230						471 000	4 094	255	277	
230	300 x 485	191.0	176	M24	980	424 000	3 693	224	252	149
240						471 000	3 931	229	252	
250						521 000	4 171	233	252	
240	320 x 520	199.0	184	M24	980	506 000	4 218	233	261	179
250						558 000	4 471	237	261	
260						608 000	4 684	239	261	

Shrink Disc MAV 3209 heavy duty

Features:

- shaft to hollow shaft connection
- 2-part design
- not self-locking
- screws DIN 931/933 grade 12.9
- shaft / hub surface finish Ra < 3,2 µm
- hub bore / shaft fitting tolerance:

shaft size ds from	to	ISO tolerances	max clearance mm
6	10	H6 - j6	0,011
11	18		0,014
19	30		0,017
31	50	H6 - h6	0,032
51	80	H6 - g6	0,048
81	120	H7 - g6	0,069
121	180		0,079
181	250		0,090
251	315		0,101
316	400		0,111
401	500		0,123



Ma: screw tightening torque
 Mt: max. transmissible torque (Fax=0 kN)
 Fax: max. transmissible axial load (Mt=0Nm)
 Ps: contact pressure on shaft
 Ph: contact pressure on hub OD

Example of order: MAV3209 – 155 x 263

Dimensions				Screws		Performance				Weight
ds mm	d x D mm	L mm	L1 mm	size	Ma Nm	Mt Nm	Fax kN	Ps N/mm ²	Ph N/mm ²	kg
250	340 x 570	223.0	206	M27	1450	656 000	5 253	253	282	256
260						713 000	5 487	254	282	
270						780 000	5 785	258	282	
280	360 x 590	227.0	210	M27	1450	826 000	5 905	249	273	265
290						899 000	6 199	252	273	
300						974 000	6 496	255	273	
300	390 x 650	237.0	220	M27	1450	1 072 000	7 150	269	292	343
310						1 157 000	7 470	272	292	
320						1 239 000	7 748	273	292	
330	420 x 680	263.0	246	M27	1450	1 273 000	7 716	232	253	407
340						1 367 000	8 043	235	253	
350						1 464 000	8 371	237	253	
340	440 x 740	276.7	258	M30	1970	1 446 000	8 509	237	259	531
350						1 549 000	8 851	240	259	
360						1 655 000	9 196	242	259	
360	460 x 760	276.7	258	M30	1970	1 558 000	8 657	228	248	549
370						1 662 000	8 986	230	248	
380						1 770 000	9 317	232	248	
380	480 x 800	316.7	298	M30	1970	1 986 000	10 454	237	255	711
390						2 110 000	10 822	239	255	
400						2 238 000	11 191	241	255	
400	500 x 840	318.7	300	M30	1970	2 295 000	11 476	247	264	791
410						2 415 000	11 784	248	264	
420						2 555 000	12 168	250	264	
430	530 x 890	359	338	M33	2650	3 095 000	14 396	257	273	1006
440						3 263 000	14 833	259	273	
450						3 436 000	15 272	261	273	
450	560 x 940	359	338	M33	2650	3 442 000	15 299	261	277	1122
460						3 619 000	15 736	263	277	
470						3 801 000	16 175	265	277	
470	590 x 980	381	360	M33	2650	3 964 000	16 870	257	273	1284
480						4 158 000	17 328	259	273	
490						4 357 000	17 787	260	273	
500	620 x 1020	417	396	M33	2650	4 859 000	19 439	250	264	1519
510						5 058 000	19 835	250	264	
520						5 288 000	20 339	252	264	

Information subject to change without prior notification. © MAV S.p.A.