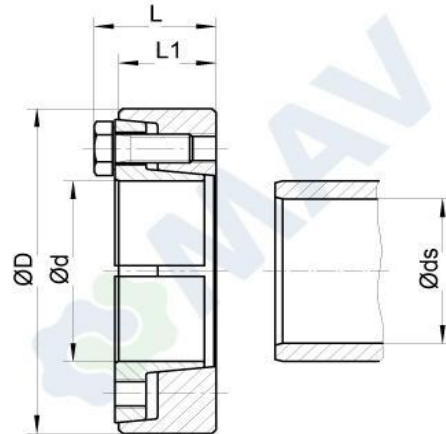


Shrink Disc MAV 3108 light duty

Features:

- shaft to hollow shaft connection
- 2-part design
- not self-locking
- screws DIN 931/933 grade 10.9
- shaft / hub surface finish Ra < 3,2 µm
- hub bore / shaft fitting tolerance:

shaft size ds from	to	ISO tolerances	max clearance mm
6	10	H6 - j6	0,011
11	18		0,014
19	30		0,017
31	50	H6 - h6	0,032
51	80	H6 - g6	0,048
81	120	H7 - g6	0,069
121	180		0,079
181	250		0,090
251	315		0,101
316	400		0,111
401	500		0,123



Ma: screw tightening torque
 Mt: max. transmissible torque (Fax=0 kN)
 Fax: max. transmissible axial load (Mt=0Nm)
 Ps: contact pressure on shaft
 Ph: contact pressure on hub OD

Example of order: MAV3108 – 155 x 245

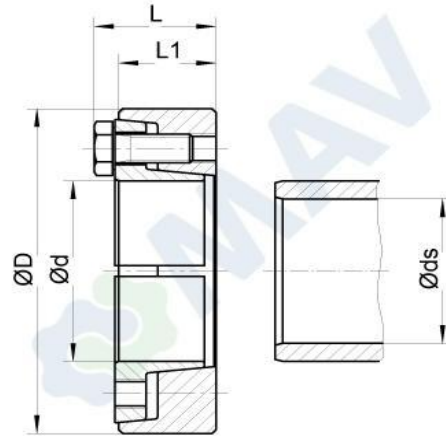
Dimensions				Screws		Performance				Weight
ds mm	d x D mm	L mm	L1 mm	size	Ma Nm	Mt Nm	Fax kN	Ps N/mm ²	Ph N/mm ²	kg
110	140 x 215	54	46	M12	100	15 900	291	148	190	7
120						21 000	350	163	190	
125						23 400	376	168	190	
130	155 x 245	54	46	M12	100	24 400	377	162	193	9
135						27 500	408	169	193	
140						30 700	439	175	193	
135	165 x 263	61.8	53	M14	160	29 500	437	160	194	12
140						32 900	471	166	194	
145						36 600	505	172	194	
145	175 x 275	61.8	53	M14	160	37 400	516	176	205	13
150						41 200	550	181	205	
155						45 300	585	186	205	
155	185 x 290	70.8	62	M14	160	55 400	715	192	218	17
160						60 500	756	197	218	
165						65 800	798	201	218	
165	195 x 320	70.8	62	M14	160	71 300	864	218	242	22
170						77 100	908	222	242	
175						83 300	952	226	242	
180	220 x 340	80.0	70	M16	250	90 500	1 006	216	241	25
190						103 000	1 085	220	241	
200						117 000	1 179	227	241	
200	240 x 370	80.0	70	M16	250	102 000	1 023	197	221	29
210						116 000	1 108	204	221	
215						123 000	1 151	207	221	
220	260 x 405	80.0	70	M16	250	136 000	1 242	218	238	35
230						153 000	1 330	223	238	
235						161 000	1 375	226	238	
230	280 x 430	92.5	80	M20	490	151 000	1 318	187	209	46
240						169 000	1 410	192	209	
250						187 000	1 504	196	209	
250	300 x 460	92.5	80	M20	490	205 000	1 647	215	234	53
260						225 000	1 733	218	234	
270						247 000	1 835	222	234	
270	320 x 485	104.5	92	M20	490	261 000	1 938	198	216	68
280						286 000	2 049	202	216	
290						313 000	2 162	205	216	

Shrink Disc MAV 3108 light duty

Features:

- shaft to hollow shaft connection
- 2-part design
- not self-locking
- screws DIN 931/933 grade 10.9
- shaft / hub surface finish Ra < 3,2 µm
- hub bore / shaft fitting tolerance:

shaft size ds from	to	ISO tolerances	max clearance mm
6	10	H6 - j6	0,011
11	18		0,014
19	30		0,017
31	50	H6 - h6	0,032
51	80	H6 - g6	0,048
81	120	H7 - g6	0,069
121	180		0,079
181	250		0,090
251	315		0,101
316	400		0,111
401	500		0,123



Ma: screw tightening torque
 Mt: max. transmissible torque (Fax=0 kN)
 Fax: max. transmissible axial load (Mt=0Nm)
 Ps: contact pressure on shaft
 Ph: contact pressure on hub OD

Example of order: MAV3108 – 155 x 245

Dimensions				Screws		Performance				Weight
ds mm	d x D mm	L mm	L1 mm	size	Ma Nm	Mt Nm	Fax kN	Ps N/mm ²	Ph N/mm ²	kg
290	340 x 520	104.5	92	M20	490	307 000	2 123	202	218	80
300						335 000	2 234	205	218	
310						363 000	2 345	209	218	
310	360 x 570	117.5	105	M20	490	401 000	2 592	199	214	116
320						432 000	2 703	201	214	
330						467 000	2 831	205	214	
330	390 x 590	117.5	105	M20	490	413 000	2 508	181	197	116
340						446 000	2 625	184	197	
350						479 000	2 742	187	197	
350	420 x 630	155.0	140	M24	840	621 000	3 550	179	195	177
360						666 000	3 702	182	195	
370						713 000	3 856	184	195	
370	440 x 660	167.0	152	M24	840	750 000	4 055	176	191	213
380						801 000	4 219	178	191	
390						854 000	4 383	181	191	
390	460 x 690	167.0	152	M24	840	800 000	4 105	169	183	233
400						852 000	4 261	171	183	
410						901 000	4 396	172	183	
410	480 x 720	189.0	174	M24	840	1 037 000	5 061	172	186	292
420						1 101 000	5 246	174	186	
430						1 167 000	5 432	176	186	
420	500 x 745	189.0	174	M24	840	1 138 000	5 423	180	194	310
430						1 206 000	5 611	182	194	
450						1 348 000	5 992	186	194	
450	530 x 790	203	186	M27	1250	1 375 000	6 113	178	191	371
460						1 450 000	6 308	180	191	
480						1 608 000	6 703	183	191	
480	560 x 830	204	187	M27	1250	1 566 000	6 527	178	189	406
490						1 646 000	6 719	180	189	
510						1 805 000	7 082	182	189	
510	590 x 880	214	197	M27	1250	1 922 000	7 541	182	193	490
520						2 015 000	7 751	184	193	
540						2 206 000	8 174	187	193	
540	620 x 930	215	198	M27	1250	2 148 000	7 958	182	192	552
550						2 245 000	8 164	183	192	
570						2 445 000	8 580	186	192	

Information subject to change without prior notification. © MAV S.p.A.