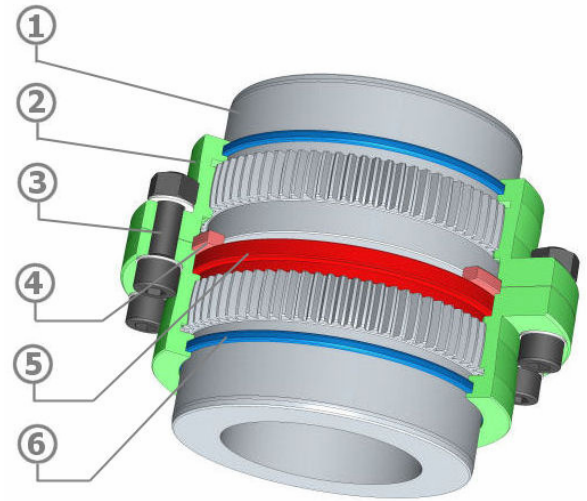
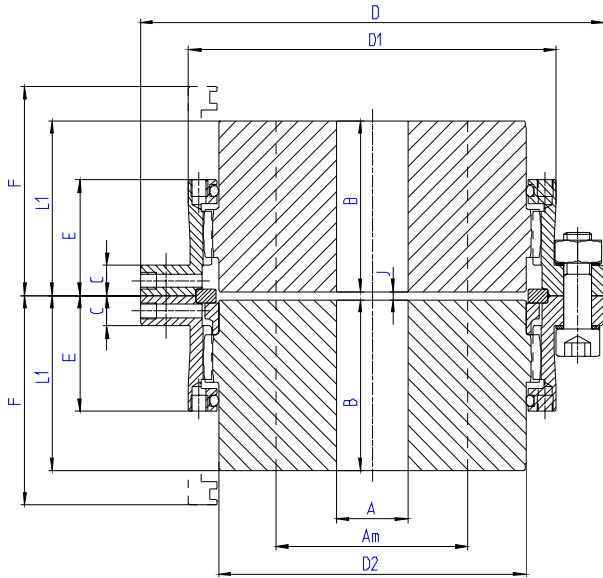


## Type V – Vertical working position



Item	Designation
1	Gear Hub
2	Half cover
3	Screws & Bolts
4	Centering ring
5	Vertical ring
6	Seal

### Example of designation: S 80 V

**SENIOR** coupling size **80** which includes a vertical ring to maintain the position of the hub in vertical running.

This ring is available for all the models.

Ex : **S 80 E 1000 V, 2 S 80 PA 1000 In. V**

Size		50	68	80	100	115	135	150	170	190	215	230	250	280	
Nominal Torque	<b>Nm</b>	1200	3000	5200	9000	13700	21300	29200	43000	60700	88200	105000	138000	190000	
Max bore	<b>Am*</b>	50	68	80	100	115	135	150	170	190	215	230	250	280	
	<b>Am**</b>	46	63	75	92	106	125	140	160	175	200	210	230	250	
Rough bore	<b>A</b>	18	18	26	35	35	58	68	83	98	108	118	128	128	
	<b>B</b>	43	50	62	76	90	105	120	135	150	175	190	220	310	
	<b>C</b>	10	10	11	11	14	18	20	20	24	24	30	30	30	
	<b>D</b>	105	140	169	200	228	266	298	330	368	410	440	473	498	
	<b>D1</b>	83.6	112.6	134	164	188	219	245	277	309	351	374	407	432	
	<b>D2</b>	69.4	95	112	138	159	188	209	238	263	302	319	349	374	
	<b>E</b>	30.5	36	42	52	63.5	74	82	91	100	110.5	122	135.5	139	
	<b>J</b>	3	3	3	5	5	6	6	8	8	8	8	10	10	
	<b>F</b>	55	63	75	93	112	130	145	163	180	205	220	253	343	
	<b>L1</b>	44.5	51.5	63.5	78.5	92.5	108	123	139	154	179	194	225	315	
	Weight •	<b>Kg</b>	3.7	7.7	13.3	23.7	37	60	85	121	166	245	304	410	621
	Moment of Inertia J•	<b>Kgm<sup>2</sup></b>	0.004	0.012	0.030	0.08	0.169	0.374	0.659	1.161	1.997	3.69	5.28	8.23	13.26
Max speed (rpm)		5400	4000	3400	2700	2400	2000	1800	1600	1500	1300	1200	1100	1000	
	<b>y</b>	14000	10500	8900	7200	6300	5400	4800	4200	3800	3300	3100	2900	2700	
Weight of grease ∇	<b>kg</b>	0.03	0.07	0.10	0.22	0.34	0.50	0.70	0.90	1.40	1.90	2.50	3.20	3.4	

\* Bore with keyway according ISO R 773 or DIN 6885/1 standard

\*\* Shrink fitting

• Solid hubs

y Dynamically balanced

∇ Per coupling